



Works approval number W6447/2020/1

Works approval holder CPB Contractors Pty Limited
ACN 000 893 667

Registered business address Level 18, 177 Pacific Highway
North Sydney NSW 2060

DWER file number DER2020/000333

Duration 30 April 2021 to 29 April 2024

Date of issue 30 April 2021

Premises details Yanchep Rail Extension
Legal description -
Lot 800 on Deposited Plan 404604
As defined by the Premises Map in Schedule 1 and
coordinates in Schedule 2

Prescribed premises category description (Schedule 1, <i>Environmental Protection Regulations 1987</i>)	Assessed production capacity
Category 12: Screening etc. of material: premises (other than premises within category 5 or 8) on which material extracted from the ground is screened, washed, crushed, ground, milled, sized or separated.	730 000 tonnes per year

This works approval is granted to the works approval holder, subject to the attached conditions, on 30 April 2021, by:

Terrel MacGregor
A/MANAGER – RESOURCE INDUSTRIES
REGULATORY SERVICES

an officer delegated under section 20 of the *Environmental Protection Act 1986* (WA)

Works approval history

Date	Reference number	Summary of changes
30 April 2021	W6447/2020/1	This works approval to construct a crushing and screening facility (Category 12).

Interpretation

In this works approval:

- (a) the words 'including', 'includes' and 'include' in conditions mean "including but not limited to", and similar, as appropriate;
- (b) where any word or phrase is given a defined meaning, any other part of speech or other grammatical form of that word or phrase has a corresponding meaning;
- (c) where tables are used in a condition, each row in a table constitutes a separate condition;
- (d) any reference to an Australian or other standard, guideline, or code of practice in this works approval:
 - (i) if dated, refers to that particular version; and
 - (ii) if not dated, refers to the latest version and therefore may be subject to change over time;
- (e) unless specified otherwise, any reference to a section of an Act refers to that section of the EP Act; and
- (f) unless specified otherwise, all definitions are in accordance with the EP Act.

NOTE: This works approval requires specific conditions to be met but does not provide any implied authorisation for other emissions, discharges, or activities not specified in this works approval.

Works approval conditions

The works approval holder must ensure that the following conditions are complied with:

Construction phase

Infrastructure and equipment

1. The works approval holder must construct and/or install the infrastructure listed in Table 1, in accordance with;
 - (a) the corresponding design and construction / installation requirement; and
 - (b) at the corresponding infrastructure location; and
 - (c) within the corresponding timeframe, as set out in Table 1.

Table 1: Installation requirements

	Infrastructure	Installation requirement	Infrastructure location	Timeframe
1.	MCloskey J50 Jaw Crusher or equivalent plant	Fitted with dust-suppression equipment Water carts, or equivalent, must be available to effectively wet down areas	Placed within the extent marked with a yellow boundary and fill and labelled "Footprint for crushing / screening works" in the Premises Map in Schedule 1.	Prior to commencing time limited operations
2.	Finlay 694 Supertrak (screen) or equivalent plant			
3.	Surface water drainage and storage infrastructure	The crushing and screening areas must be bunded and drain such that: <ul style="list-style-type: none">• Clean surface water run-off will be directed away from the processing areas	N/A	Prior to commencing time limited operations

Compliance reporting

2. The works approval holder must within 21 calendar days of an item of infrastructure or equipment required by condition 1 being constructed and/or installed:
 - (a) undertake an audit of their compliance with the requirements of condition 1; and
 - (b) prepare and submit to the CEO an Environmental Compliance Report on that compliance.
3. The Environmental Compliance Report required by condition 2, must include as a minimum the following:

- (a) as constructed plans and a detailed site plan for each item of infrastructure or component of infrastructure specified in condition 1 that demonstrates compliance with the relevant requirements specified in condition 1; and
- (b) be signed by a person authorised to represent the works approval holder and contains the printed name and position of that person.

Time limited operations phase

Commencement and duration

4. The works approval holder may only commence time limited operations for an item of infrastructure identified in condition 1 the Environmental Compliance Report as required by condition 2 has been submitted by the works approval holder for that item of infrastructure.
5. The works approval holder may conduct time limited operations for an item of infrastructure specified in condition 1 (as applicable):
 - (a) for a period not exceeding 90 calendar days from the day the works approval holder meets the requirements of condition 4 for that item of infrastructure; or
 - (b) until such time as a licence for that item of infrastructure is granted in accordance with Part V of the *Environmental Protection Act 1986*, if one is granted before the end of the period specified in condition 5(a).

Requirements during time limited operations

6. The works approval holder must ensure that operations at the premises only occur between the hours of 0700 to 1900 and on the days Monday to Saturday.
7. During time limited operations, the works approval holder must ensure that the premises infrastructure and equipment listed in Table 2 and located at the corresponding infrastructure location is maintained and operated in accordance with the corresponding operational requirement set out in Table 2.

Table 2: Infrastructure and equipment requirements during time limited operations

	Site infrastructure and equipment	Operational requirement	Infrastructure location
1.	MCloskey J50 Jaw Crusher or equivalent plant	Dust suppression system shall be functional while material is being crushed and screened	Placed within the extent marked with a yellow boundary and fill and labelled "Footprint for crushing / screening works" in the Premises Map in Schedule 1.
2.	Finlay 694 Supertrak (screen) or equivalent plant		
3.	Surface water drainage and storage infrastructure	Clean surface water run-off must be directed away from the processing areas	N/A

Monitoring during time limited operations

8. Within 7 days of the commencement of time limited operations the works approval holder must retain the services of a person qualified and experienced in the area of environmental noise assessment and who by their qualifications and experience is eligible to hold membership of the Australian Acoustical Society or the Australian Association of Acoustical Consultants to:
 - (a) investigate the nature and extent of noise emissions from the premises including undertaking noise monitoring during normal operations at the boundary of the closest noise sensitive receptor located greater than 100 meters from Marmion Avenue to the north;
 - (b) assess in accordance with the methodology required in the *Environmental Protection (Noise) Regulations 1997*, the compliance of the noise emissions from the primary activities, against the relevant assigned levels specified in those Regulations; and
 - (c) compile and submit to the works approval holder within one month of the commencement date of this works approval a report in accordance with condition 9.

Compliance reporting

9. A report prepared pursuant to condition 8(c) is to include:
 - (a) a description of the methods used for monitoring and/or modelling of noise emissions from the premises;
 - (b) details and the results of the investigation undertaken pursuant to condition 8(a); and
 - (c) details and results of the assessment of the noise emissions from the premises, against the relevant assigned levels in the *Environmental Protection (Noise) Regulations 1997* undertaken pursuant to condition 8(b); and
 - (d) an assessment of noise levels against the most recent previous noise assessment.
10. The works approval holder must submit to the CEO the report prepared pursuant to condition 8 (c) within 7 days of receiving it.
11. Where an assessment pursuant to condition 8(b) indicates that noise emissions do not comply with the relevant assigned levels in the *Environmental Protection (Noise) Regulations 1997*, the license holder must:
 - (a) cease time limited operations for the infrastructure specified in condition 1;
 - (b) within 14 days of receiving an assessment report pursuant to condition 8 (c) prepare a plan to ensure the undertaking of the licensed activity will no longer lead to any contravention of the *Environmental Protection (Noise) Regulations 1997*; and
 - (c) provide to the CEO a copy of the plan prepared pursuant to condition 11(b) within 30 days of its preparation.
12. A report prepared pursuant to condition 11(b) is to include timeframes for the completion of additional noise mitigation measures.
13. The works approval holder may recommence time limited operations of the infrastructure specified in condition 1 upon implementation of all noise mitigation measures identified in accordance with condition 11(b).

14. Where operations are recommenced in accordance with condition 13, the works approval holder must notify the CEO in writing a minimum of 48 hours prior to recommencing time limited operations.
15. The works approval holder must submit to the CEO a report on the time limited operations within 30 calendar days of the completion date of time limited operations.
16. The works approval holder must ensure the report required by condition 15 includes the following:
 - (a) a summary of the time limited operations, including timeframes and amount of material processed;
 - (b) a summary of the environmental performance of all infrastructure as constructed or installed;
 - (c) a review of performance and compliance against the conditions of the works approval; and
 - (d) where the manufacturer's design specifications and the conditions of this works approval have not been met, what measures will the works approval holder take to meet them, and what timeframes will be required to implement those measures.

Records and reporting (general)

17. The works approval holder must record the following information in relation to complaints received by the works approval holder (whether received directly from a complainant or forwarded to them by the Department or another party) about any alleged emissions from the premises:
 - (a) the name and contact details of the complainant, (if provided);
 - (b) the time and date of the complaint;
 - (c) the complete details of the complaint and any other concerns or other issues raised; and
 - (d) the complete details and dates of any action taken by the works approval holder to investigate or respond to any complaint.
18. The works approval holder must maintain accurate and auditable books including the following records, information, reports, and data required by this works approval:
 - (a) the works conducted in accordance with condition 1;
 - (b) any maintenance of infrastructure that is performed in the course of complying with condition 1;
 - (c) monitoring programmes undertaken in accordance with condition 6; and
 - (d) complaints received under condition 15.
19. The books specified under condition 16 must:
 - (a) be legible;
 - (b) if amended, be amended in such a way that the original version(s) and any subsequent amendments remain legible and are capable of retrieval;
 - (c) be retained by the works approval holder for the duration of the works approval; and
 - (d) be available to be produced to an inspector or the CEO as required.

Definitions

In this works approval, the terms in Table 3 have the meanings defined.

Table 3: Definitions

Term	Definition
books	has the same meaning given to that term under the EP Act.
CEO	means Chief Executive Officer. CEO for the purposes of notification means: Director General Department administering the <i>Environmental Protection Act 1986</i> Locked Bag 10 Joondalup DC WA 6919 info@dwer.wa.gov.au
Department	means the department established under section 35 of the <i>Public Sector Management Act 1994</i> and designated as responsible for the administration of Part V Division 3 of the EP Act.
discharge	has the same meaning given to that term under the EP Act.
emission	has the same meaning given to that term under the EP Act.
EP Act	<i>Environmental Protection Act 1986</i> (WA).
EP Regulations	<i>Environmental Protection Regulations 1987</i> (WA).
premises	the premises to which this licence applies, as specified at the front of this licence and as shown on the premises map (Figure 1) in Schedule 1 to this works approval.
prescribed premises	has the same meaning given to that term under the EP Act.
time limited operations	refers to the operation of the infrastructure and equipment identified under this works approval that is authorised for that purpose, subject to the relevant conditions.
works approval	refers to this document, which evidences the grant of the works approval by the CEO under section 54 of the EP Act, subject to the conditions.
works approval holder	refers to the occupier of the premises being the person to whom this works approval has been granted, as specified at the front of this works approval.

END OF CONDITIONS

Schedule 1: Maps

Premises map

The boundary of the prescribed premises is shown in the map below (Figure 1).

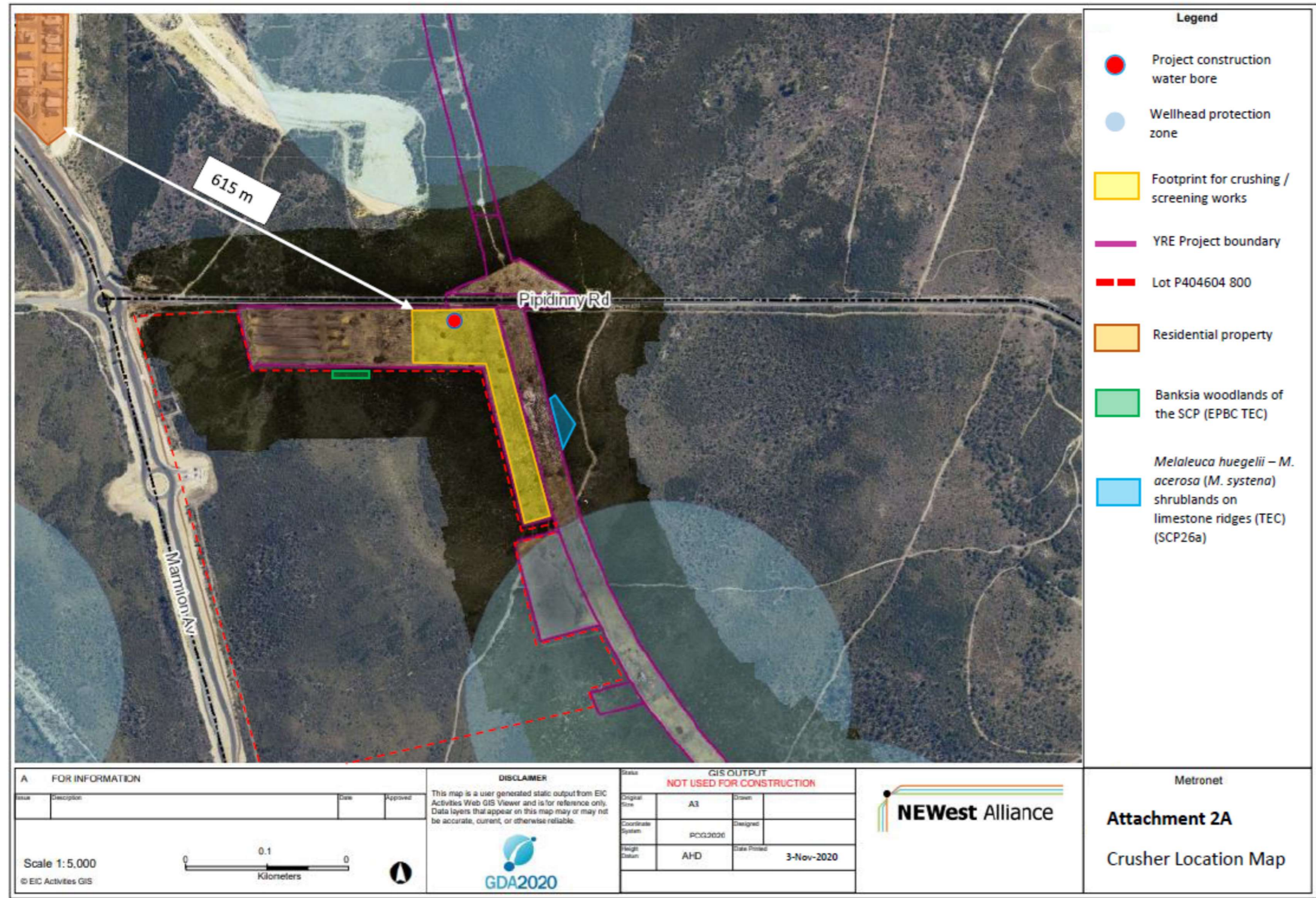


Figure 1: Premises boundary indicated by yellow line with yellow infill (Legend: Footprint for crushing/ screening works)

Schedule 2: Premises boundary

The premises boundary is defined by the coordinates in Table 4.

Table 4: Premises boundary coordinates (GDA94)

Latitude	Longitude
-31.582045	115.670593
-31.582052	115.671848
-31.582858	115.670582
-31.582871	115.671642
-31.585064	115.672306
-31.584964	115.672719