



Works approval number	W6550/2021/1
Works approval holder	Maiden Iron Pty Ltd
ACN	126 497 434
Registered business address	Level 10, 190 St George's Terrace PERTH WA 6000
DWER file number	DER2021/000165
Duration	10/09/2021 to 09/09/2024
Date of issue	10/09/2021
Premises details	Extension Bulk Sample Project Mining Tenement M47/1355 JUNA DOWNS WA 6751

Prescribed premises category description (Schedule 1, <i>Environmental Protection Regulations 1987</i>)	Assessed production capacity
Category 5: Processing or beneficiation of metallic or non-metallic ore	200,000 tonnes per annum

This works approval is granted to the works approval holder, subject to the attached conditions, on 10 September 2021, by:

Melanie Bruckberger

**A/MANAGER, RESOURCE INDUSTRIES
REGULATORY SERVICES**

an officer delegated under section 20 of the *Environmental Protection Act 1986* (WA)

Works approval history

Date	Reference number	Summary of changes
10/09/2021	W6550/2021	New Works Approval

Interpretation

In this works approval:

- (a) the words 'including', 'includes' and 'include' in conditions mean "including but not limited to", and similar, as appropriate;
- (b) where any word or phrase is given a defined meaning, any other part of speech or other grammatical form of that word or phrase has a corresponding meaning;
- (c) where tables are used in a condition, each row in a table constitutes a separate condition;
- (d) any reference to an Australian or other standard, guideline, or code of practice in this works approval:
 - (i) if dated, refers to that particular version; and
 - (ii) if not dated, refers to the latest version and therefore may be subject to change over time;
- (e) unless specified otherwise, any reference to a section of an Act refers to that section of the EP Act; and
- (f) unless specified otherwise, all definitions are in accordance with the EP Act.

NOTE: This works approval requires specific conditions to be met but does not provide any implied authorisation for other emissions, discharges, or activities not specified in this works approval.

Works approval conditions

The works approval holder must ensure that the following conditions are complied with:

Construction phase

Infrastructure and equipment

1. The works approval holder must:
 - (a) construct and/or install the infrastructure and/or equipment;
 - (b) in accordance with the corresponding design and construction / installation requirements; and
 - (c) at the corresponding infrastructure location as set out in Table 1.

Table 1: Design and construction / installation requirements

Item	Infrastructure	Design and construction / installation requirements	Infrastructure location
1.	Process Area	<p>The Process Area comprises:</p> <ol style="list-style-type: none">1. A Run Of Mine (ROM) pad designed and constructed to maintain existing surface water flows.2. Crushing and screening plant with a maximum design capacity of 1.3 million tonnes per annum, and comprising:<ol style="list-style-type: none">a) Heavy duty track mounted jaw crusher, fitted with dust control sprinklers;b) Heavy duty track mounted screener, fitted with dust control sprinklers;c) Heavy duty track mounted cone crusher, fitted with dust control sprinklers; andd) 2 x track mounted conveyors with dust control shields/covers3. ROM (source material) stockpiles area.4. Product stockpile area.5. Perimeter bunding to divert surface water away from the ROM pad, crushing and screening plant, processing and stockpile areas.6. Sedimentation sumps to settle out sediments prior to discharge from the ROM Pad, crushing and screening plant, processing area and stockpiles.7. Hydrocarbon storage in accordance with AS1940:2004 The Storage and Handling of Flammable and Combustible Liquids.	<p>The “Process Area” comprises the areas marked ‘ROM’, ‘ROM stockpiles’, ‘Mobile crushing facility’ and ‘Product stockpile’ on Figure 2 in Schedule 1 of this Works Approval, and the sedimentation sumps marked as ‘Sediment trap S1 and S2’ on Figure 3 in Schedule 1 of this Works Approval.</p>

Compliance reporting

2. The works approval holder must within 30 calendar days of an item of infrastructure or equipment required by condition 1 being constructed and/or installed:
 - (a) undertake an audit of their compliance with the requirements of condition 1; and
 - (b) prepare and submit to the CEO an Environmental Compliance Report on that compliance.
3. The Environmental Compliance Report required by condition 2 must include as a minimum the following:
 - (a) certification by a suitably qualified engineer that the items of infrastructure or component(s) thereof, as specified in condition 1, have been constructed in accordance with the relevant requirements specified in condition 1;
 - (b) as constructed plans and a detailed site plan for each item of infrastructure or component of infrastructure specified in condition 1; and
 - (c) be signed by a person authorised to represent the works approval holder and contains the printed name and position of that person.

Time limited operations phase

Commencement and duration

4. The works approval holder may only commence time limited operations for an item of infrastructure identified in condition 6 where the Environmental Compliance Report as required by condition 2 has been submitted by the works approval holder for that item of infrastructure.
5. The works approval holder may conduct time limited operations for an item of infrastructure specified in condition 6:
 - (a) for a period not exceeding 180 calendar days from the day the works approval holder meets the requirements of condition 2 for that item of infrastructure; or
 - (b) until such time as a licence for that item of infrastructure is granted in accordance with Part V of the *Environmental Protection Act 1986* if one is granted before the end of the period specified in condition 5(a).
6. During time limited operations, the works approval holder must ensure that the premises infrastructure and equipment listed in Table 2 and located at the corresponding infrastructure location is maintained and operated in accordance with the corresponding operational requirement set out in Table 2.

Table 2: Infrastructure and equipment requirements during time limited operations

	Site infrastructure and equipment	Operational requirement	Infrastructure location
1.	Process Area	<p>1) Crushing and screening plant must only be operated with the following dust control equipment in operation:</p> <ul style="list-style-type: none"> a) Heavy duty track mounted jaw crusher, fitted with dust control sprinklers; b) Heavy duty track mounted screener, fitted with dust control sprinklers; c) Heavy duty track mounted cone crusher, fitted with dust control sprinklers; and d) 2 x track mounted conveyors with dust control shields/covers <p>2) Perimeter bunding to be maintained to divert surface water away from the ROM pad, crushing and screening plant, processing and stockpile areas.</p> <p>3) Process Area to be graded to direct surface water to the site sedimentation sumps to settle out sediments prior to discharge</p>	<p>The "Process Area" comprises the areas marked 'ROM', 'ROM stockpiles', 'Mobile crushing facility' and 'Product stockpile' on Figure 2 in Schedule 1 of this Works Approval, and the sedimentation sumps marked as 'Sediment trap (S1 and S2)' on Figure 3 in Schedule 1 of this Works Approval.</p>

Compliance reporting

7. The works approval holder must submit to the CEO a report on the time limited operations within 30 calendar days of the completion date of time limited operations or 30 calendar days before the expiration date of the works approval, whichever is the sooner.
8. The works approval holder must ensure the report required by condition 7 includes the following:
 - (a) a summary of the time limited operations, including any relevant timeframes and amount of material processed;
 - (b) a review of performance and compliance against the conditions of the works approval; and
 - (c) where the manufacturer's design specifications and the conditions of this works approval have not been met, what measures will the works approval holder take to meet them, and what timeframes will be required to implement those measures.

Records and reporting (general)

9. The works approval holder must record the following information in relation to complaints received by the works approval holder (whether received directly from a complainant or forwarded to them by the Department or another party) about any alleged emissions from the premises:
 - (a) the name and contact details of the complainant, (if provided);
 - (b) the time and date of the complaint;
 - (c) the complete details of the complaint and any other concerns or other issues raised; and
 - (d) the complete details and dates of any action taken by the works approval holder to investigate or respond to any complaint.
10. The works approval holder must maintain accurate and auditable books including the following records, information, reports, and data required by this works approval:
 - (a) the works conducted in accordance with condition 1;
 - (b) any maintenance of infrastructure that is performed in the course of complying with condition 1 and 6; and
 - (c) complaints received under condition 9.
11. The books specified under condition 10 must:
 - (a) be legible;
 - (b) if amended, be amended in such a way that the original version(s) and any subsequent amendments remain legible and are capable of retrieval;
 - (c) be retained by the works approval holder for the duration of the works approval; and
 - (d) be available to be produced to an inspector or the CEO as required.

Definitions

In this works approval, the terms in Table 3 have the meanings defined.

Table 3: Definitions

Term	Definition
AS1940:2004	means the Australian Standard AS/NZS 1940 – The storage and handling of flammable and combustible liquids
books	has the same meaning given to that term under the EP Act.
CEO	means Chief Executive Officer. CEO for the purposes of notification means: Director General Department administering the <i>Environmental Protection Act 1986</i> Locked Bag 10 Joondalup DC WA 6919 info@dwer.wa.gov.au
Department	means the department established under section 35 of the <i>Public Sector Management Act 1994</i> and designated as responsible for the administration of Part V Division 3 of the EP Act.
discharge	has the same meaning given to that term under the EP Act.
emission	has the same meaning given to that term under the EP Act.
Environmental Compliance Report	means a report to satisfy the CEO that the conditioned infrastructure and/or equipment has been constructed and/or installed in accordance with the works approval.
EP Act	<i>Environmental Protection Act 1986</i> (WA).
EP Regulations	<i>Environmental Protection Regulations 1987</i> (WA).
premises	the premises to which this licence applies, as specified at the front of this licence and as shown on the premises map (Figure 1) in Schedule 1 to this works approval.
prescribed premises	has the same meaning given to that term under the EP Act.

Term	Definition
suitably qualified engineer	means a person who: <ol style="list-style-type: none"> 1) holds a Bachelor's degree recognised by Engineers Australia; 2) has a minimum of 5 years of experience in a supervisory role in engineering; and 3) is employed by an independent third party external to the Licence Holder's business; or is otherwise approved in writing by the CEO to act in this capacity.
time limited operations	refers to the operation of the infrastructure and equipment identified under this works approval that is authorised for that purpose, subject to the relevant conditions.
works approval	refers to this document, which evidences the grant of the works approval by the CEO under section 54 of the EP Act, subject to the conditions.
works approval holder	refers to the occupier of the premises being the person to whom this works approval has been granted, as specified at the front of this works approval.

END OF CONDITIONS

Schedule 1: Maps

Premises boundary map

The boundary of the prescribed premises (Mining Tenement 47/1355) is shown by the pink line in the Figure 1 below.

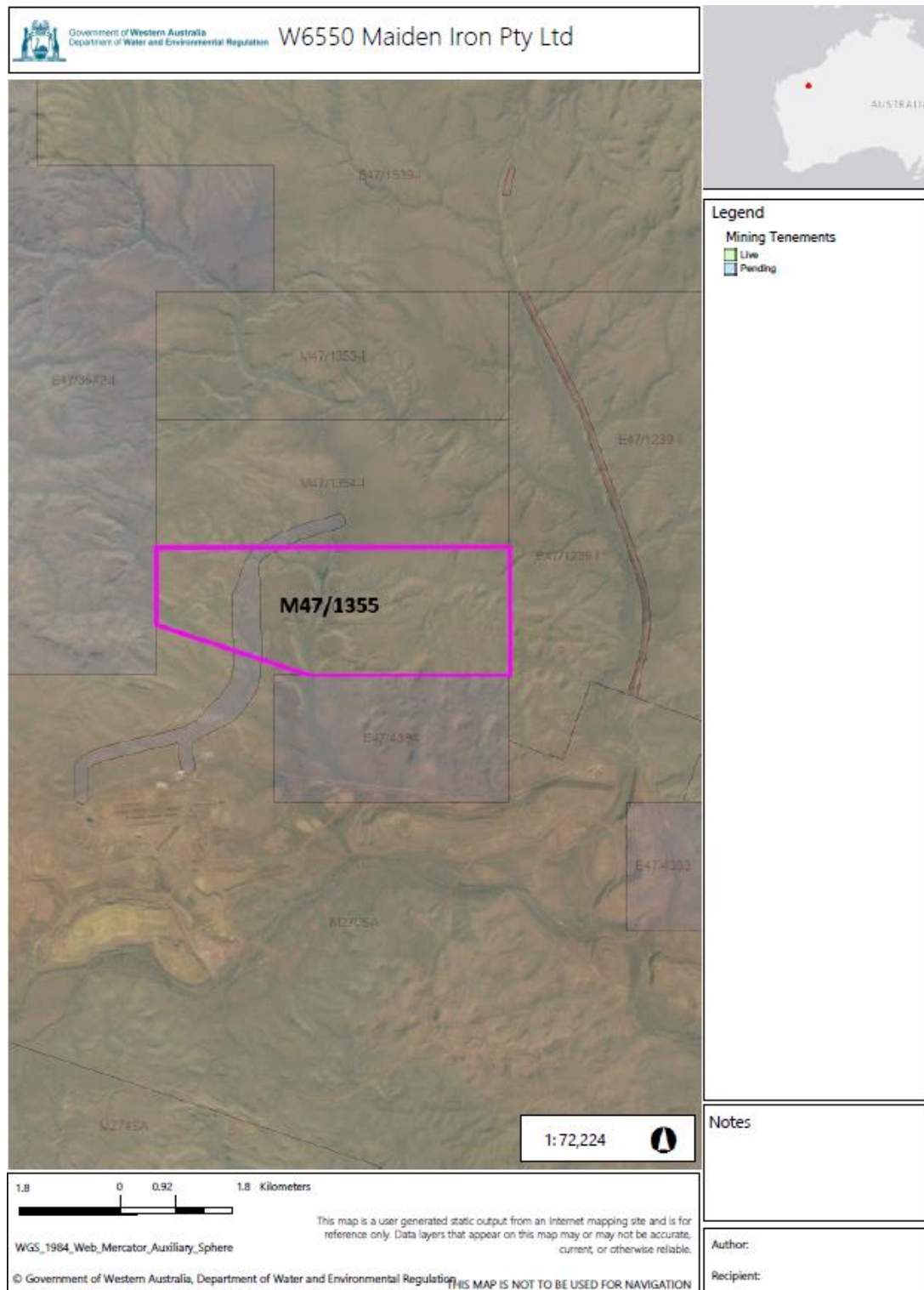


Figure 1: Map of the boundary of the prescribed premises

W6550/2021/1 (10 September 2021)

IR-T05 Works approval template (v5.0) (February 2020)

Premises premises activity areas map

Figure 2 provides a map of the mobile crushing and screening plant and associated infrastructure in relation to the premises boundary (red line) on Mining Tenement 47/1355.

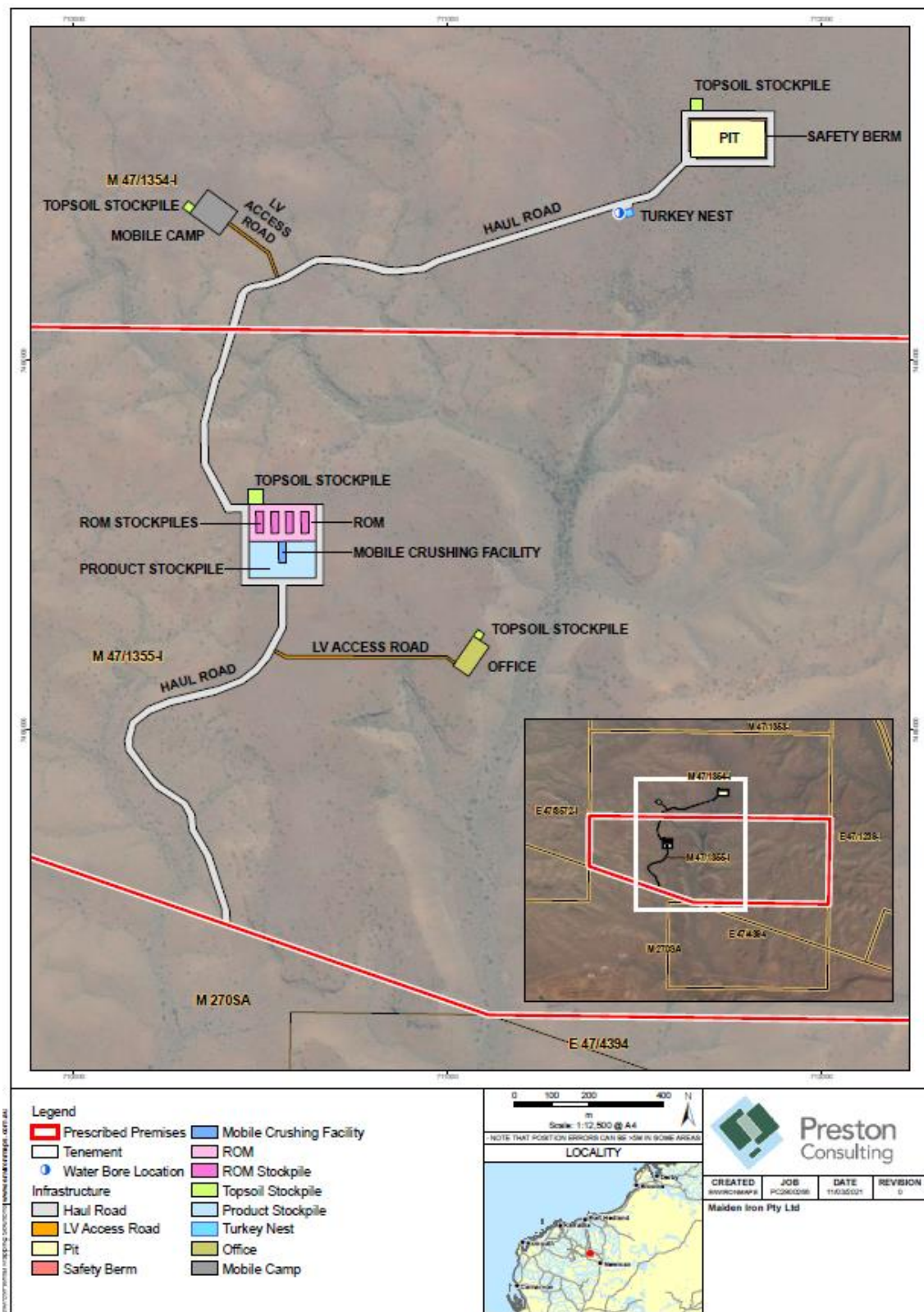


Figure 2: Prescribed premises activity areas map

W6550/2021/1 (10 September 2021)

IR-T05 Works approval template (v5.0) (February 2020)

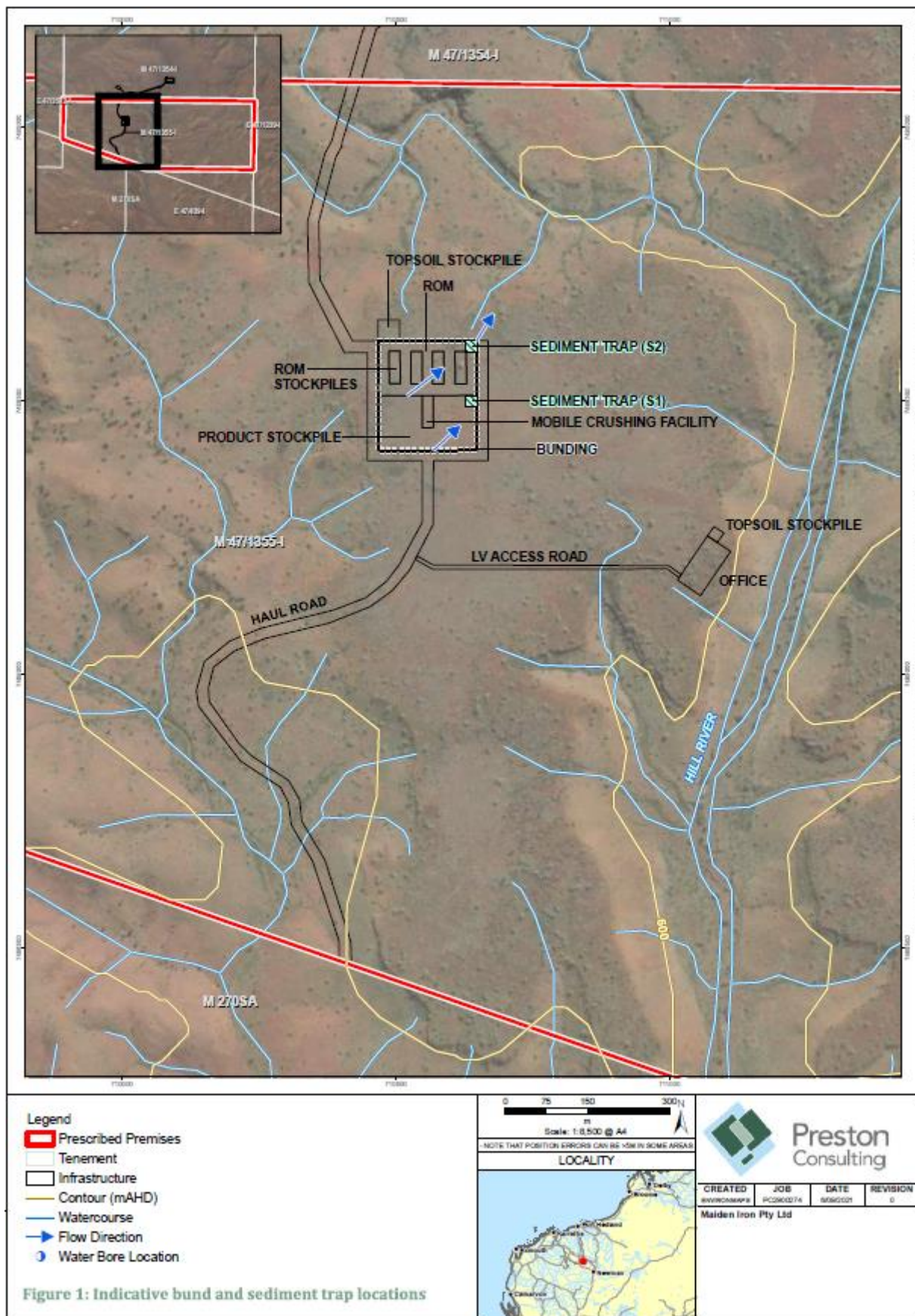


Figure 3: Proposed Processing Area bunding, drainage and sedimentation basins