



Licence number	L6168/1991/11
Licence holder	BHP Iron Ore Pty Ltd
ACN	008 700 981
Registered business address	125 St Georges Terrace PERTH WA 6000
DWER file number	DER2013/001190-1
Duration	17/11/2015 to 16/11/2035
Date of issue	12/11/2015
Date of amendment	17/06/2022
Premises details	Yandi (Marillana Creek) Iron Ore Mine Mining Tenements M270SA, G47/12, G47/13, G47/14, G47/15, G47/16, G47/17, G47/18, G47/19, NEWMAN WA 6753 As depicted in Schedule 1

Prescribed premises category description (Schedule 1, <i>Environmental Protection Regulations 1987</i>)	Assessed production / design capacity
Category 5 – Processing or beneficiation of metallic or non-metallic ore	87,000,000 tonnes per annual period
Category 6 – Mine dewatering	15,000,000 tonnes per annual period
Category 12 – Screening, etc. of material	200,000 tonnes per annual period
Category 52 – Electric power generation	45 megawatts
Category 54 – Sewage facility	773 cubic metres per day
Category 64 – Class II putrescible landfill site	21,800 tonnes per annual period
Category 73 – Bulk storage of chemicals etc.	4000 cubic metres in aggregate

This licence is granted to the licence holder, subject to the attached conditions, on 17 June 2022, by:

Alana Kidd

Manager, Resource Industries

an officer delegated under section 20 of the *Environmental Protection Act 1986* (WA)

[L6168/1991/11](#)

Licence history

Date	Reference number	Summary of changes
15/11/2000	L6168/1991/3	Licence renewal
13/11/2001	L6168/1991/4	Licence renewal
28/10/2002	W3691/2002/1	Works approval
15/11/2002	L6168/1991/5	Licence renewal
17/11/2003	L6168/1991/6	Licence renewal
15/11/2004	L6168/1991/7	Licence renewal
15/11/2005	L6168/1991/8	Licence renewal
11/12/2008	W4475/2008/1	Works approval
12/11/2009	L6168/1991/9	Licence renewal
16/12/2010	W477/2010/1	Works approval
17/02/2011	W4859/2011/1	Works approval
6/10/2011	W5018/2011/1	Works approval
15/11/2012	L6168/1991/10	Licence renewal
12/11/2015	L6168/1991/11	Licence renewal
22/09/2016	L6168/1991/11	Licence amendment to update premises address, include inert waste disposal location and other minor amendments, including removal of conditions that are not valid, enforceable and/or risk based
5/12/2018	L6168/1991/11	Amendment notice 1 issued to include category 12 and 52, construct a new inert landfill, increase the category 64 disposal limit, increase the category 73 storage volume and update the premises map in Figure 1, Schedule 1.
17/6/2022	L6168/1991/11	Licence amendment to consolidate amendment notice 1, remove tenements, remove discharge point MCDMDEW031, amend waste management conditions and modify landfarm conditions.

Interpretation

In this licence:

- (a) the words 'including', 'includes' and 'include' in conditions mean "including but not limited to", and similar, as appropriate;
- (b) where any word or phrase is given a defined meaning, any other part of speech or other grammatical form of that word or phrase has a corresponding meaning;
- (c) where tables are used in a condition, each row in a table constitutes a separate condition;
- (d) any reference to an Australian or other standard, guideline, or code of practice in this licence:
 - (i) if dated, refers to that particular version; and
 - (ii) if not dated, refers to the latest version and therefore may be subject to change over time;
- (e) unless specified otherwise, any reference to a section of an Act refers to that section of the EP Act; and
- (f) unless specified otherwise, all definitions are in accordance with the EP Act.

NOTE: This licence requires specific conditions to be met but does not provide any implied authorisation for other emissions, discharges, or activities not specified in this licence.

Licence conditions

The licence holder must ensure that the following conditions are complied with:

General Conditions

1. The Licence Holder must ensure the limits specified in Table 1 are not exceeded.

Table 1: Production or design capacity limits

Category	Category Description	Premises production or design capacity limit
5	Crushing and screening facilities	87,000,000 tonnes per annual period.
6	Dewatering infrastructure	15,000,000 tonnes per annual period.
12	Crushing and screening facilities	200,000 tonnes per annual period.
52	Power station	45 megawatts
73	Fuel storage and handling areas	4000 cubic metres in aggregate.

Infrastructure and equipment

Premises operation

2. The Licence Holder shall only accept waste on to the landfill and WWTPs if:
 - (a) it is of a type listed in Table 2;
 - (b) the quantity accepted is below any quantity limit listed in Table 2; and
 - (c) it meets any specification listed in Table 2.

Table 2: Waste acceptance

Waste type	Quantity limit	Specification ¹
Inert Waste Type 1	21,800 tonnes per annual period	None specified Includes inert concrete and pipework
Inert Waste Type 2		Tyres, conveyor belts and plastic only
Putrescible Waste		None specified
Sewage	1,028 m ³ /day ²	Accepted through sewer inflow(s) only

Note 1: Additional requirements for the acceptance of controlled waste (including asbestos and tyres) are set out in the *Environmental Protection (Controlled Waste) Regulations 2004*.

Note 2: Quantity limit measured as volume of treated wastewater discharged to designated irrigation areas.

3. The Licence Holder shall ensure that where waste does not meet the waste acceptance criteria set out in condition 2 it is removed from the Premises by the delivery vehicle or, where that is not possible, stored in a quarantined storage area or container and removed to an appropriately authorised facility as soon as practicable.

4. The Licence Holder shall ensure that wastes accepted onto the landfill and WWTP are only subjected to the process(es) set out in Table 3 and in accordance with any process limits described in that Table.

Table 3: Waste processing

Waste type	Process(es)	Process limits ^{1, 2}
Inert Waste Type 1	Receipt, handling and disposal of waste by landfilling	<u>All waste types</u> <ul style="list-style-type: none"> disposal of waste by landfilling shall only take place within the landfill area shown on the Map in Schedule 1: Maps, Premises map; waste is disposed of in a defined trench or within an area enclosed by earthen bunds; no waste shall be temporarily stored or landfilled within 35 metres from the boundary of the premises; the tipping area is restricted to a maximum linear length of 30 metres and is no greater than 2 metres in height; and the separation distance between the base of the landfill and the highest groundwater level shall not be less than 2m; <ul style="list-style-type: none"> Windrows will be maintained along the landfill boundaries to direct stormwater away from the trenches; and Perimeter fencing maintained around active landfill trenches. <u>Used Tyres and Conveyor belts</u> <p>Shall only be buried in the areas located within the prescribed premises boundary shown in Schedule 1: Maps, Premises map.</p> <u>Inert waste type 1</u> <p>Concrete and pipework only are also authorised for disposal within pit voids and overburden storage areas.</p>
Inert Waste Type 2		
Putrescible Waste		
Sewage	Biological, physical and chemical treatment	None specified
Sewage sludge	Drying and storage	None specified
Hydrocarbon contaminated waste	Bioremediation	Contaminated soil is only to be remediated within the Landfarm facilities shown on the Map in Schedule 1, Maps: Premises map.

Note 1: Requirements for landfilling tyres are set out in Part 6 of the *Environmental Protection Regulations 1987*.

Note 2: Additional requirements for the acceptance and landfilling of controlled waste (including asbestos and tyres) are set out in the *Environmental Protection (Controlled Waste) Regulations 2004*.

5. The Licence Holder shall ensure that cover is applied and maintained on landfilled wastes in accordance with Table 4 and that sufficient stockpiles of cover are maintained on site at all times.

Table 4: Cover requirements¹

Waste Type	Material	Depth	Timescales
Inert Waste Type 1	No cover required		
Inert Waste Type 2	Type 1 Inert waste or soil	100 mm	As soon as practicable after deposit Plastic waste with the potential to become windblown shall be covered as soon as practicable after deposit
Putrescible Waste		300 mm	As soon as practicable after deposit and not later than weekly

Note 1: Additional requirements for the covering of tyres are set out in Part 6 of the *Environmental Protection Regulations 1987*.

6. The Licence Holder shall ensure that wind-blown waste is contained within the boundary of the Premises and that wind-blown waste is returned to the tipping area on at least a monthly basis.
7. The Licence Holder shall ensure that the waste material specified in Table 5 is only stored and/or treated within the vessels or compounds provided with the infrastructure detailed in Table 5.

Table 5: Containment infrastructure

Vessel or compound	Material	Infrastructure requirements
Spinifex Camp WWTP anaerobic, facultative and maturation ponds	Effluent from the Spinifex Camp	<ul style="list-style-type: none"> HDPE lined to achieve a permeability of 1×10^{-9} m/s or less Maintain vertical freeboard of 400 mm
OHP3 Oily Wastewater Ponds	Treated oily water from the OHP3 oily water separator	<ul style="list-style-type: none"> HDPE lined to achieve a permeability of 1×10^{-9} m/s or less Maintain vertical freeboard of 400 mm
OHP3 Sewage Treatment Facility Evaporation Ponds	Treated wastewater from the OHP3 Wastewater Treatment facility	<ul style="list-style-type: none"> HDPE lined to achieve a permeability of 1×10^{-9} m/s or less Maintain vertical freeboard of 400 mm
Central and Eastern Landfarms	Hydrocarbon contaminated soils	<ul style="list-style-type: none"> Any potentially contaminated runoff from the treatment cells is contained

8. The Licence Holder must install and undertake works for the infrastructure and equipment:
 - (a) specified in column 1;
 - (b) to the requirements specified in column 2; and
 - (c) at the location specified in column 3 of Table 6.
9. The Licence Holder must not depart from the requirements in column 2 of Table 6 except:
 - (a) where such departure does not increase risks to public health, public amenity or the environment; and
 - (b) all other conditions in this Licence are still satisfied.
10. The Licence Holder must provide, subject to condition 11 and within 30 days of the completion of the works specified in column 1 of Table 6, a report to the CEO confirming each item of infrastructure or component of infrastructure specified in column 1 of Table 6 below has been constructed and commissioned with no material defects and to the requirements specified in column 2.
11. The Licence Holder must provide to the CEO a description of, and explanation for, and departures along with the report required by condition 10.

Table 6: Works specifications

Infrastructure/ Equipment	Requirements (design and construction)	Site plan reference
Thirty-two (32) 1.6 MW Cat 3516B Diesel Generator Sets or similar	<ul style="list-style-type: none">Design and construction specifications of temporary power station pad in accordance with the power generation facilities – Yandi, Temporary Power Station Pad – General Arrangement, Drawing No 644.Generators equipped with belly tanks and internally banded.Banded areas for oil storage.	Schedule 1, <u>Maps</u> : Premises map and Temporary Power Station map general arrangement design drawing and typical layout
Power station bulk fuel storage facility	<ul style="list-style-type: none">Four (4) 110,000 kL double skinned storage tanks.Fuel unloading spill trapsDouble skinned pipework, installed along a culvert system draining to underground level alarmed catchment tanksFuel unloading spill traps	Schedule 1, <u>Maps</u> : Premises map
Putrescible landfills	Three new putrescible landfills: <ul style="list-style-type: none">Each landfill will be constructed with a series of trenches (exact number will depend on available space at each location) with the following	<u>Schedule 1, Maps</u> : Premises map

	<p>maximum dimensions: length of 200m, width 25m, depth 2.5m deep and volume 12,500 m³;</p> <ul style="list-style-type: none"> • Windrows will be maintained along the landfill boundaries to direct stormwater away from the trenches; • Perimeter fencing maintained around active landfill trenches; and • To extend landfill life additional cells may be installed on top of the original cells once they have reached capacity. 	
--	---	--

- 12.** The Licence Holder must:
- notify the department one week prior to the power station commencing operation; and
 - must operate the power station for a period of twelve (12) months only unless authorised by the CEO.
- 13.** The Licence Holder must construct the infrastructure listed in Table 7, in accordance with the corresponding design and construction requirement as set out in Table 7.

Table 7: Design and construction requirements

Infrastructure	Design and construction requirement	Infrastructure location
Bioremediation landfarms	<p>Landfarm facilities will be constructed with the following requirements:</p> <ul style="list-style-type: none"> • Synthetic Lined to achieve a permeability of 1×10^{-9} m/s; • Stormwater run-off diverted so as not to flow onto the treatment facility; • designed so that any potentially contaminated runoff from the treatment cells is contained. 	<ul style="list-style-type: none"> • Within the prescribed premises • Not to be constructed within 50m of surface water courses • Adequately fenced or positioned to prevent public access. • Appropriate signage warning of contamination placed.

- 14.** The licence holder must within 30 days of each item of infrastructure required by condition 13 being constructed:
- undertake an audit of their compliance with the requirements of condition 13; and
 - prepare and submit to the CEO an audit report on that compliance, including an aerial map of the landfarm location(s).

Emissions and discharges

Point source emissions to surface water

15. The Licence Holder shall ensure that where waste is emitted to surface water from the emission points in Table 8 and identified on the map of emission points in Schedule 1 it is done so in accordance with the conditions of this Licence.

Table 8: Emission points to surface water

Emission point reference and location on Map of emission points	Description	Source including abatement
MCDMDEW040	Discharge of excess mine dewatering water to Marillana Creek	Water abstracted to facilitate mining below the water table
MCDMDEW041	Contingency discharge point to Marillana Creek	Discharge of water during wet weather events

Emissions to land

16. The Licence Holder shall ensure that where waste is emitted to land from the emission points in Table 9 and identified on the map of emission points in Schedule 1 it is done so in accordance with the conditions of this Licence.

Table 9: Emissions to land

Emission point reference and location on Map of emission points	Emission point reference on Map of emission points	Description	Source including abatement
MCSWSTP004	Spinifex Camp WWTP irrigation area	6.9 hectare irrigation area	Treated wastewater from Spinifex Camp WWTP (420 m ³ /day)
OHP3 Oily Waste Water Ponds	OHP3 Oily Waste Water Ponds	Discharge of treated wastewater	Treated wastewater from the OHP3 Oily Water Treatment Facility

Point source emissions to air

17. The Licence Holder shall ensure that where waste is emitted to air from the emission points in Table 10 and identified on the map of emission points in Schedule 1, it is done so in accordance with the conditions of this licence.

Table 10: Point source emissions to air

Emission point reference and location on Map of emission points	Source including abatement
45MW temporary power station	Thirty-two (32) Cat 3516B diesel generators, or similar

Monitoring

General monitoring

18. The Licence Holder shall ensure that:
- (a) all water samples are collected and preserved in accordance with AS/NZS 5667.1;
 - (b) all wastewater sampling is conducted in accordance with AS/NZS 5667.10;
 - (c) all surface water sampling is conducted in accordance with AS/NZS 5667.6 as relevant; and
 - (d) all laboratory samples are submitted to and tested by a laboratory with current NATA accreditation for the parameters being measured unless indicated otherwise in the relevant table.
19. The Licence Holder shall ensure that:
- (a) monthly monitoring is undertaken at least 15 days apart; and
 - (b) quarterly monitoring is undertaken at least 45 days apart.
20. The Licence Holder shall ensure that all monitoring equipment used on the Premises to comply with the conditions of this Licence is calibrated in accordance with the manufacturer's specifications.
21. The Licence Holder shall, where the requirements for calibration cannot be practicably met, or a discrepancy exists in the interpretation of the requirements, bring these issues to the attention of the CEO accompanied with a report comprising details of any modifications to the methods.

Monitoring of point source emissions to surface water

22. The Licence Holder shall undertake the monitoring in Table 11 according to the specifications in that table.

Table 11: Monitoring of point source emissions to surface water

Emission point reference	Monitoring point location	Parameter	Units	Averaging Period	Frequency
MCDMDEW040 MCDMDEW041	Flow meters to discharge point	Volumetric flow rate (cumulative)	m ³ /day	Quarterly	Continuous
	Discharge	pH ¹	-	Spot sample	Quarterly
		Electrical	(µS/cm)		

	points	Conductivity			
		Total Dissolved Solids	mg/L		
		Total Suspended Solids	mg/L		
		Total Recoverable Hydrocarbons	mg/L		
		Sodium	mg/L		
		Potassium	mg/L		
		Calcium	mg/L		
		Magnesium	mg/L		
		Chloride	mg/L		
		Carbonate	mg/L		
		Bicarbonate	mg/L		
		Sulfate	mg/L		
		Nitrate	mg/L		
		Aluminium	mg/L		
		Boron	mg/L		
		Iron	mg/L		
		Copper	mg/L		
		Zinc	mg/L		
		Silver	mg/L		
		Arsenic	mg/L		
		Chromium	mg/L		
		Cadmium	mg/L		
		Mercury	mg/L		
		Nickel	mg/L		
		Selenium	mg/L		
		Manganese	mg/L		

Note 1: In-field non-NATA accredited analysis permitted.

Monitoring of emissions to land

23. The Licence Holder shall undertake the monitoring in Table 12 according to the specifications in that table.

Table 12: Monitoring of emissions to land

Emission point reference	Monitoring point location	Parameter	Limit	Units	Averaging period	Frequency
MCSWSTP001	Treated wastewater from final storage tank prior to discharge	Volumetric flow rate	-	m ³ /day	Quarterly	Continuous
MCSWSTP004	Spinifex Camp WWTP maturation pond	pH ¹	-	-	Spot sample	Quarterly
		Biochemical Oxygen Demand	-	mg/L		
		Total Suspended Solids	-	mg/L		
		Residual Chlorine ¹	-	mg/L		
		Total Nitrogen	-	mg/L		
		Total Phosphorus	-	mg/L		
		<i>E.coli</i>	-	MPN or cfu/100mL where MPN is not available		
OHP3 Oily Wastewater Ponds	Treated wastewater pond prior to discharge	Total Recoverable Hydrocarbons	15	mg/L	Spot sample	Prior to discharge

Note 1: In-field non-NATA accredited analysis permitted.

Monitoring of inputs and outputs

24. The Licence Holder shall undertake the monitoring in Table 13 according to the specifications in that table.

Table 13: Monitoring of inputs and outputs

Input/Output	Parameter	Units	Averaging period	Frequency
Waste inputs	Inert Waste Type 1 and Inert Waste Type 2	Tonnes	N/A	Annual records of total waste arriving at the landfill facility

Ambient environmental quality monitoring

- 25.** The Licence Holder shall undertake the monitoring in Table 14 according to the specifications in that table and record and investigate results.

Table 14: Monitoring of ambient surface water quality

Monitoring point reference and location	Parameter	Units	Averaging period	Frequency
Marillana Creek surface water monitoring sites YNSWPC001 YNSWPC002	pH ¹	-	Spot sample	Following rain events
	Electrical Conductivity	(µS/cm)		
	Total Dissolved Solids	mg/L		
	Total Suspended Solids	mg/L		
	Total Recoverable Hydrocarbons	mg/L		
	Sodium	mg/L		
	Potassium	mg/L		
	Calcium	mg/L		
	Magnesium	mg/L		
	Chloride	mg/L		
	Carbonate	mg/L		
	Bicarbonate	mg/L		
	Sulfate	mg/L		
	Nitrate	mg/L		
	Aluminium	mg/L		
	Boron	mg/L		
	Iron	mg/L		

	Copper	mg/L		
	Zinc	mg/L		
	Silver	mg/L		
	Arsenic	mg/L		
	Chromium	mg/L		
	Cadmium	mg/L		
	Mercury	mg/L		
	Nickel	mg/L		
	Selenium	mg/L		
	Manganese	mg/L		

Note 1: In-field non-NATA accredited analysis permitted.

Records and reporting

Records

- 26.** All information and records required by the Licence shall:
- (a) be legible;
 - (b) if amended, be amended in such a way that the original and subsequent amendments remain legible or are capable of retrieval;
 - (c) except for records listed in 26(d) be retained for at least 6 years from the date the records were made or until the expiry of the Licence or any subsequent licence; and
 - (d) for those following records, be retained until the expiry of the Licence and any subsequent licence:
 - (i) off-site environmental effects; or
 - (ii) matters which affect the condition of the land or waters.
- 27.** The licence holder must:
- (a) undertake an audit of their compliance with the conditions of this licence during the preceding annual period; and
 - (b) prepare and submit to the CEO by 1 October after the end of the annual period an Annual Audit Compliance Report in the approved form.
- 28.** The licence holder must record the following information in relation to complaints received by the licence holder (whether received directly from a complainant or forwarded to them by the Department or another party) about any alleged emissions from the premises:
- (a) the name and contact details of the complainant, (if provided);
 - (b) the time and date of the complaint;

- (c) the complete details of the complaint and any other concerns or other issues raised; and
 - (d) the complete details and dates of any action taken by the licence holder to investigate or respond to any complaint.
- 29.** The licence holder must maintain accurate and auditable books including the following records, information, reports, and data required by this licence:
- (a) the calculation of fees payable in respect of this licence;
 - (b) the works conducted in accordance with condition 11 of this licence;
 - (c) monitoring programmes undertaken in accordance with conditions 21 to 25 of this licence; and
 - (d) complaints received under condition **Error! Reference source not found.** of this licence.
- 30.** The books specified under condition 29 must:
- (a) be legible;
 - (b) if amended, be amended in such a way that the original version(s) and any subsequent amendments remain legible and are capable of retrieval;
 - (c) be retained by the licence holder for the duration of the licence; and
 - (d) be available to be produced to an inspector or the CEO as required.

Reporting

- 31.** The Licence Holder shall submit to the CEO an Annual Environmental Report by the 1 October each year. The report shall contain the information listed in Table 15 in the format or form specified in that table.

Table 15: Annual Environmental Report

Condition or table (if relevant)	Parameter	Format or form ¹
-	Summary of any failure or malfunction of any pollution control equipment and any environmental incidents that have occurred during the annual period and any action taken	None specified
Table 2	Waste acceptance	None specified
Table 3	Quantity of hydrocarbon contaminated waste placed in landfarms for remediation. Reporting required for monitoring purposes only – no limit in place.	None specified
1, 2	Production or design capacity data and limit exceedances	None specified
Table 8	Cumulative volume discharged via each separate emission point	None specified
Table 11	Point source emissions to surface water monitoring results and a comparison of results against established	None specified

	trigger values. Details of investigations conducted, including outcomes, environmental impacts and remedial actions, in relation to trigger exceedances and a discussion of any trends identified	
Table 12	Limit exceedances and emissions to land monitoring results and comparison of results against the manufacturers specifications	None specified
Table 13	Monitoring of inputs and outputs	None specified
Table 14	Ambient surface water quality monitoring results and a comparison of results against established trigger values. Details of investigations conducted, including outcomes, environmental impacts and remedial actions, in relation to trigger exceedances and a discussion of any trends identified	None specified
Error! Reference source not found.	Compliance	None specified
Error! Reference source not found.	Complaints summary	None specified

Note 1: Forms are in Schedule 2

- 32.** The Licence Holder shall ensure that the Annual Environmental Report also contains an assessment of the information contained within the report against previous monitoring results and Licence limits.
- 33.** The Licence Holder shall submit the information in Table 16 to the CEO according to the specifications in that table.

Table 16: Non-annual reporting requirements

Condition or table (if relevant)	Parameter	Reporting period	Reporting date (after end of the reporting period)	Format or form ¹
-	Copies of original monitoring reports	Not	Within 14 days of the CEOs	As received by the Licence

	submitted to the Licence Holder by third parties	Applicable	request	Holder from third parties
--	--	------------	---------	---------------------------

Note 1: Forms are in Schedule 2

Notification

- 34.** The Licence Holder shall ensure that the parameters listed in Table 17 are notified to the CEO in accordance with the notification requirements of the table.

Table 17: Notification requirements

Condition or table (if relevant)	Parameter	Notification requirement ¹	Format or form ²
Table 2 and Table 12	Breach of any limit specified in the Licence	Part A: As soon as practicable but no later than 5pm of the next usual working day. Part B: As soon as practicable	N1
Condition 21	Calibration report	As soon as practicable.	None specified

Note 1: Notification requirements in the Licence shall not negate the requirement to comply with s72 of the Act

Note 2: Forms are in Schedule 2

Definitions

In this licence, the terms in Table 18 have the meanings defined.

Table 18: Definitions

Term	Definition
ACN	Australian Company Number.
Act	means the Environmental Protection Act 1986.
Annual Audit Compliance Report (AACR)	means a report submitted in a format approved by the CEO (relevant guidelines and templates may be available on the Department's website).
annual period	means the inclusive period from 1 July until 30 June in the following year.
AS/NZS 5667.1	means the Australian Standard AS/NZS 5667.1 Water Quality – Sampling – Guidance of the Design of sampling programs, sampling techniques and the preservation and handling of samples
AS/NZS 5667.6	means the Australian Standard AS/NZS 5667.6 Water Quality – Sampling – Guidance on sampling of rivers and streams
AS/NZS 5667.10	means the Australian Standard AS/NZS 5667.10 Water Quality – Sampling – Guidance on sampling of waste waters
averaging period	means the time over which a limit is measured or a monitoring result is obtained.
books	has the same meaning given to that term under the EP Act.
CEO	means Chief Executive Officer of the Department of Environment Regulation.
CEO	for the purpose of correspondence means: Chief Executive Officer / Director General Department administering the <i>Environmental Protection Act 1986</i> Locked Bag 10 Joondalup DC WA 6919 Telephone: (08) 6367 7000 or: info@dwer.wa.gov.au
Compliance Report	means a report in a format approved by the CEO as presented by the or as specified by the CEO from time to time and published on the Department's website.
controlled waste	has the definition in Environmental Protection (Controlled Waste) Regulations 2004.

Term	Definition
Department	means the department established under section 53 of the Public Sector Management Act and designated as responsible for the administration of Division 3 Part V of the Environmental Protection Act 1986.
discharge	has the same meaning given to that term under the EP Act.
emission	has the same meaning given to that term under the EP Act.
EP Act	<i>Environmental Protection Act 1986</i> (WA).
freeboard	means the distance between the maximum water surface elevation and the top of retaining banks or structures at their lowest point.
HDPE	means high density polyethylene.
Inert Waste Type 1	has the meaning defined in Landfill definitions.
Inert Waste Type 2	has the meaning defined in Landfill definitions.
Landfill Definitions	means the document titled “Landfill Waste Classification and Waste Definitions 1996” published by the Chief Executive Officer of the Department of Environment as amended from time to time.
licence	means this Licence numbered L6168/1991/11 and issued under the under section 57 of the EP Act by the CEO, subject to the specified conditions contained within.
licence holder	means the person or organisation who is the occupier of the premises, named as Licence Holder on page 1 of the Licence.
MPN	most probable number.
NATA	means the National Association of Testing Authorities, Australia.
NATA accredited	means in relation to the analysis of a sample that the laboratory is NATA accredited for the specified analysis at the time of the analysis.
normal operating conditions	means any operation of a particular process (including abatement equipment) excluding start-up, shut-down and upset conditions, in relation to stack sampling or monitoring.
premises	means the area defined in the Premises Map in Schedule 1 and listed as the Premises address on page 1 of the Licence.
prescribed premises	has the same meaning given to that term under the EP Act.
Putrescible	has the meaning defined in Landfill definitions.

Term	Definition
quarterly	means the 4 inclusive periods from 1 April to 30 June, 1 July to 30 September, 1 October to 31 December and in the following year, 1 January to 31 March.
Schedule 1	means Schedule 1 of this Licence unless otherwise stated.
Schedule 2	means Schedule 2 of this Licence unless otherwise stated.
spot sample	means a discrete sample representative at the time and place at which the sample is taken.
usual working day	means 0800 – 1700 hours, Monday to Friday excluding public holidays in Western Australia.
waste	has the same meaning given to that term under the EP Act.
WWTP	means wastewater treatment plant.

END OF CONDITIONS

Schedule 1: Maps

Premises map

The boundary of the prescribed premises and arrangement of major infrastructure is shown in the map below (Figure 1).

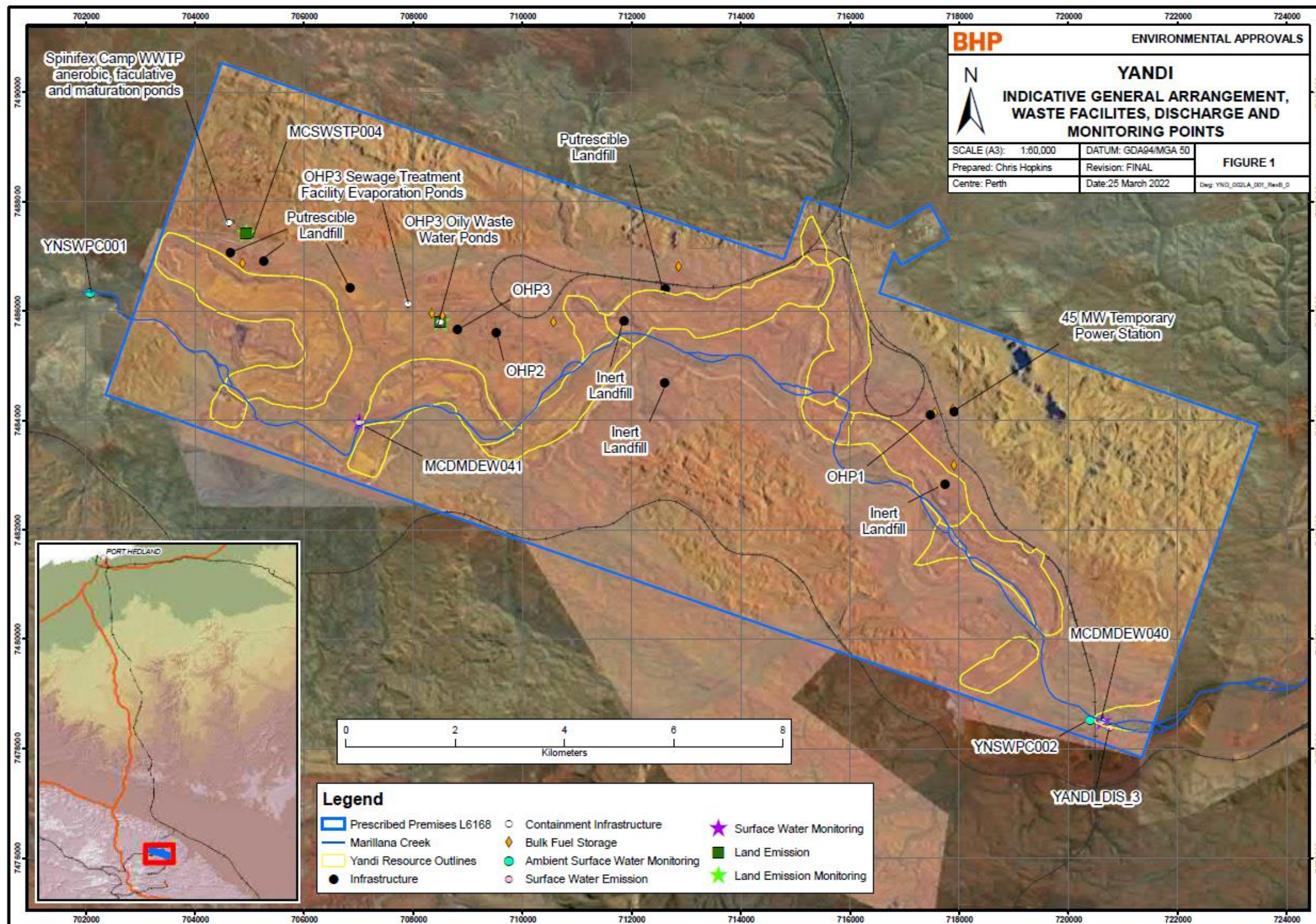


Figure 1: Map of the boundary of the prescribed premises and arrangement of major infrastructure.

L6168/1991/11 (amended 17/06/2022)

IR-T06 Licence template (v7.0) (February 2020)

[illegible]

L6168/1991/11 (amended 17/06/2022)

Typical layout of the Temporary Power Station is shown in the figure below (Figure 3)

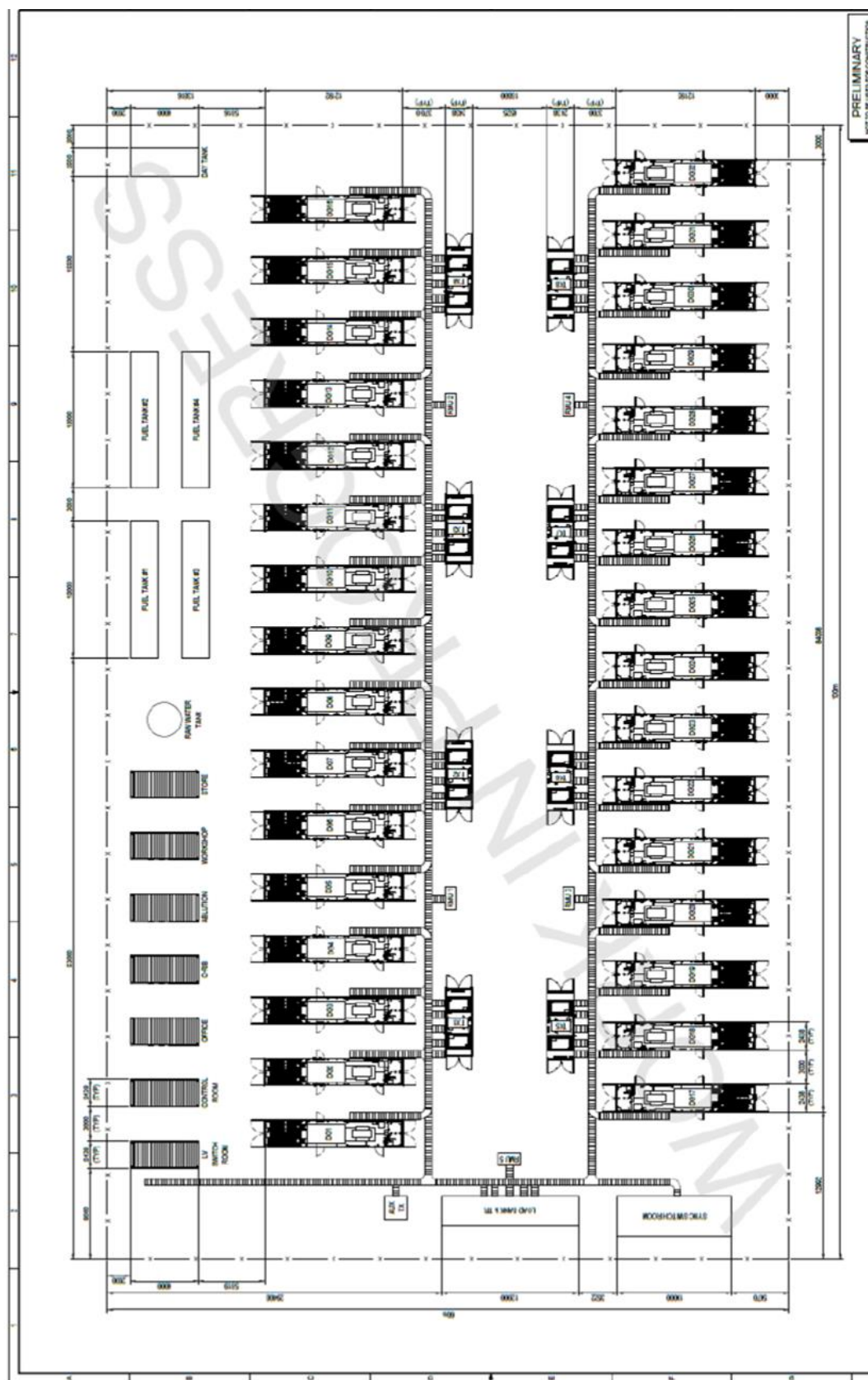


Figure 3 Temporary power station – typical layout

L6168/1991/11 (amended 17/06/2022)

Schedule 2: Notification Form



Government of **Western Australia**
Department of **Water and Environmental Regulation**

Licence:

Licence holder:

Form: N1

Date of breach:

Notification of detection of the breach of a limit.

These pages outline the information that the operator must provide.

Units of measurement used in information supplied under Part A and B requirements shall be appropriate to the circumstances of the emission. Where appropriate, a comparison should be made of actual emissions and authorised emission limits.

Part A

Licence number	
Name of operator	
Location of premises	
Time and date of the detection	

Notification requirements for the breach of a limit	
Emission point reference/source	
Parameter(s)	
Limit	
Measured value	
Date and time of monitoring	
Measures taken, or intended to be taken, to stop the emission	

Part B

Any more accurate information on the matters for notification under Part A.	
Measures taken, or intended to be taken, to prevent a recurrence of the incident.	
Measures taken, or intended to be taken, to rectify, limit or prevent any pollution of the environment which has been or may be caused by the emission.	
The dates of any previous N1 notifications for the Premises in the preceding 24 months.	

Name	
Post	
Signature on behalf of licence holder	
Date	