



**Works approval number** W6658/2022/1

**Works approval holder** Ransberg Pty Ltd  
**ACN** 009 468 464  
**Registered business address** 401 Spearwood Avenue  
BIBRA LAKE WA 6163  
**DWER file number** DER2022/000023

**Duration** 21/06/2022 to 20/06/2025

**Date of issue** 21/06/2022

**Premises details** WA Premix  
394 Robertson Road,  
CARDUP WA 6122  
Legal description  
Part of Lot 60 on Diagram 59263  
Certificate of Title Volume 2672 Folio 275 & 276  
As defined by the coordinates in Schedule 2 of the  
works approval

<b>Prescribed premises category description (Schedule 1, <i>Environmental Protection Regulations 1987</i>)</b>	<b>Assessed production / design capacity</b>
Category 77: Concrete Batching or Cement Products Manufacturing	Design capacity of 280,000 tonnes per year with expected actual production of 150,000 tonnes

This works approval is granted to the works approval holder, subject to the attached conditions, on 21/06/2022, by:

**Manager, Process Industries**

an officer delegated under section 20 of the *Environmental Protection Act 1986* (WA)

## Works approval history

Date	Reference number	Summary of changes
21/06/2022	W6658/2022/1	Works approval granted

## Interpretation

In this works approval:

- (a) the words 'including', 'includes' and 'include' in conditions mean "including but not limited to", and similar, as appropriate;
- (b) where any word or phrase is given a defined meaning, any other part of speech or other grammatical form of that word or phrase has a corresponding meaning;
- (c) where tables are used in a condition, each row in a table constitutes a separate condition;
- (d) any reference to an Australian or other standard, guideline, or code of practice in this works approval:
  - (i) if dated, refers to that particular version; and
  - (ii) if not dated, refers to the latest version and therefore may be subject to change over time;
- (e) unless specified otherwise, any reference to a section of an Act refers to that section of the EP Act; and
- (f) unless specified otherwise, all definitions are in accordance with the EP Act.

**NOTE:** This works approval requires specific conditions to be met but does not provide any implied authorisation for other emissions, discharges, or activities not specified in this works approval.

# Works approval conditions

The works approval holder must ensure that the following conditions are complied with:

## Construction phase

### Infrastructure and equipment

1. The works approval holder must construct the infrastructure listed in Table 1:
  - (a) in accordance with the corresponding design and construction requirements; and
  - (b) at the corresponding infrastructure location;
 as set out in that table.

**Table 1: Design and construction / installation requirements**

	Infrastructure	Design and construction requirements	Infrastructure location
1.	Concrete Batching Operations Area	<ul style="list-style-type: none"> <li>• Site surface area to be sealed with concrete and/or asphalt.</li> <li>• Surface to be shaped to drain stormwater to detention basin and process water to wedge pit.</li> </ul>	Schedule 1, Figure 2
2.	7 x 150m <sup>3</sup> (approx) Material Bins	<ul style="list-style-type: none"> <li>• Must be constructed with concrete floor and concrete sides and fitted with sprinklers.</li> </ul>	Schedule 1, Figure 2
3.	4 x 22.5m <sup>3</sup> Aggregate Holding Hoppers	<ul style="list-style-type: none"> <li>• Must be fitted with wind shields and water sprays to prevent dust emissions.</li> </ul>	Schedule 1, Figure 2
4.	2 x Cement silos (combined 140 tonne capacity)	Each silo must be constructed with: <ul style="list-style-type: none"> <li>• Reverse jet pulse filter cleaning system which is designed to reduce dust emissions to less than 50 milligrams per cubic metre;</li> <li>• a pressure differential devise to detect blockages and holes in filters;</li> <li>• Ducting which discharges air from the cement silo air cleaning system to within one metre of the ground;</li> <li>• A level indicator with an audible alarm which sounds if cement reaches 0.6 metres (m) below the inlet to the silo's air cleaning system or 2 tonnes less than the silo's maximum capacity;</li> <li>• A relief valve which is piped to a weigh hopper or outlet within 1m of the ground to prevent overfilling;</li> <li>• A test circuit which indicates whether the level indicator and alarm are operating</li> </ul>	Schedule 1, Figure 2

	Infrastructure	Design and construction requirements	Infrastructure location
		correctly.	
5.	1 x 4.5m <sup>3</sup> Twin shaft paddle mixer (above truck load out area)	<ul style="list-style-type: none"> <li>• Must be fitted with a dust filtration system to prevent dust emissions during transfer of dry materials.</li> <li>• Must be equipped with high pressure water sprays to prevent accumulation of concrete.</li> </ul>	Schedule 1, Figure 2
6.	Truck load out area	<ul style="list-style-type: none"> <li>• Must be sealed with concrete and/or asphalt and surface shaped to drain process water to the wedge pit for reuse within the plant.</li> <li>• Must be constructed with concrete sides.</li> </ul>	Schedule 1, Figure 2
7.	Slump stand	<ul style="list-style-type: none"> <li>• Surface must be sealed with concrete and/or asphalt and shaped to drain process water to the wedge pit for reuse within the plant.</li> <li>• Must be constructed with concrete sides.</li> </ul>	Schedule 1, Figure 2
8.	Wash out bays	<ul style="list-style-type: none"> <li>• Surface must be sealed with concrete and/or asphalt and shaped to drain process water to the wedge pit for reuse within the plant.</li> <li>• Must be constructed with concrete sides.</li> </ul>	Schedule 1, Figure 2
9.	Conveyor	<ul style="list-style-type: none"> <li>• Must be enclosed with wind shields to prevent dust emissions.</li> <li>• Water sprays to be installed on transfer points.</li> </ul>	Schedule 1, Figure 2
10.	Basin	<ul style="list-style-type: none"> <li>• To be constructed as per design to accommodate 1-100 year ARI rainfall event.</li> </ul>	Schedule 1, Figure 2
11.	Wedge Pit	<ul style="list-style-type: none"> <li>• To be constructed as per design to accommodate 1-100 year ARI rainfall event.</li> </ul>	Schedule 1, Figure 2

## Compliance reporting

2. The works approval holder must within 28 calendar days of all infrastructure and equipment required by condition 1 being constructed or installed:
  - (a) undertake an audit of their compliance with the requirements of condition 1; and
  - (b) prepare and submit to the CEO an Environmental Compliance Report on that compliance.
3. The Environmental Compliance Report required by condition 2, must include as a minimum the following:
  - (a) certification that the items of infrastructure or component(s) thereof, as specified in condition 1, have been constructed in accordance with the relevant requirements specified in condition 1;
  - (b) as constructed plans and a detailed site plan for each item of infrastructure or component of infrastructure specified in condition 1; and
  - (c) be signed by a person authorised to represent the works approval holder and contains the printed name and position of that person.

## Records and reporting

4. The works approval holder must record the following information in relation to complaints received by the works approval holder (whether received directly from a complainant or forwarded to them by the Department or another party) about any alleged emissions from the premises:
  - (a) the name and contact details of the complainant, (if provided);
  - (b) the time and date of the complaint;
  - (c) the complete details of the complaint and any other concerns or other issues raised; and
  - (d) the complete details and dates of any action taken by the works approval holder to investigate or respond to any complaint.
5. The works approval holder must maintain accurate and auditable books including the following records, information, reports, and data required by this works approval:
  - (a) the works conducted in accordance with condition 1;
  - (b) any maintenance of infrastructure that is performed in the course of complying with condition 1;
  - (c) complaints received under condition 4.
6. The books specified under condition 5 must:
  - (a) be legible;
  - (b) if amended, be amended in such a way that the original version(s) and any subsequent amendments remain legible and are capable of retrieval;
  - (c) be retained by the works approval holder for the duration of the works approval; and
  - (d) be available to be produced to an inspector or the CEO as required.

## Definitions

In this works approval, the terms in Table 2 have the meanings defined.

**Table 2: Definitions**

Term	Definition
books	has the same meaning given to that term under the EP Act.
CEO	means Chief Executive Officer. CEO for the purposes of notification means: Director General Department administering the <i>Environmental Protection Act 1986</i> Locked Bag 10 Joondalup DC WA 6919 <a href="mailto:info@dwer.wa.gov.au">info@dwer.wa.gov.au</a>
condition	a condition to which this works approval is subject under section 62 of the EP Act.
Department	means the department established under section 35 of the <i>Public Sector Management Act 1994</i> and designated as responsible for the administration of Part V Division 3 of the EP Act.
discharge	has the same meaning given to that term under the EP Act.
emission	has the same meaning given to that term under the EP Act.
Environmental Compliance Report	means a report to satisfy the CEO that the conditioned infrastructure and/or equipment has been constructed and/or installed in accordance with the works approval.
EP Act	<i>Environmental Protection Act 1986</i> (WA).
EP Regulations	<i>Environmental Protection Regulations 1987</i> (WA).
premises	the premises to which this licence applies, as specified at the front of this licence and as shown on the premises map (Figure 1) in Schedule 1 to this works approval.
prescribed premises	has the same meaning given to that term under the EP Act.
waste	has the same meaning given to that term under the EP Act.
works approval	refers to this document, which evidences the grant of the works approval by the CEO under section 54 of the EP Act, subject to the conditions.
works approval holder	refers to the occupier of the premises being the person to whom this works approval has been granted, as specified at the front of this works approval.

---

**END OF CONDITIONS**

# Schedule 1: Maps

## Premises map

The boundary of the prescribed premises is shown in the map below (Figure 1).

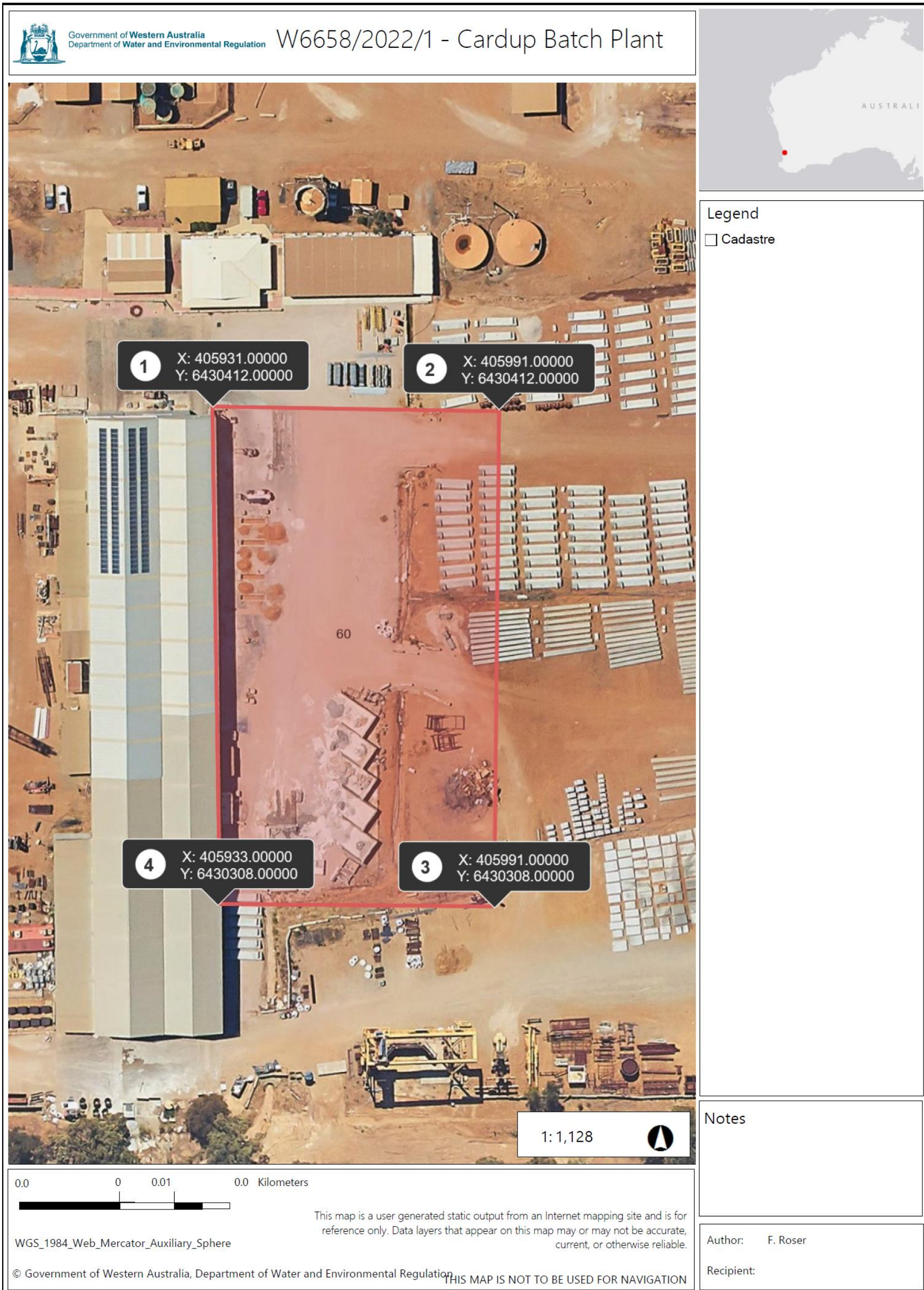


Figure 1: Map of the boundary of the prescribed premises

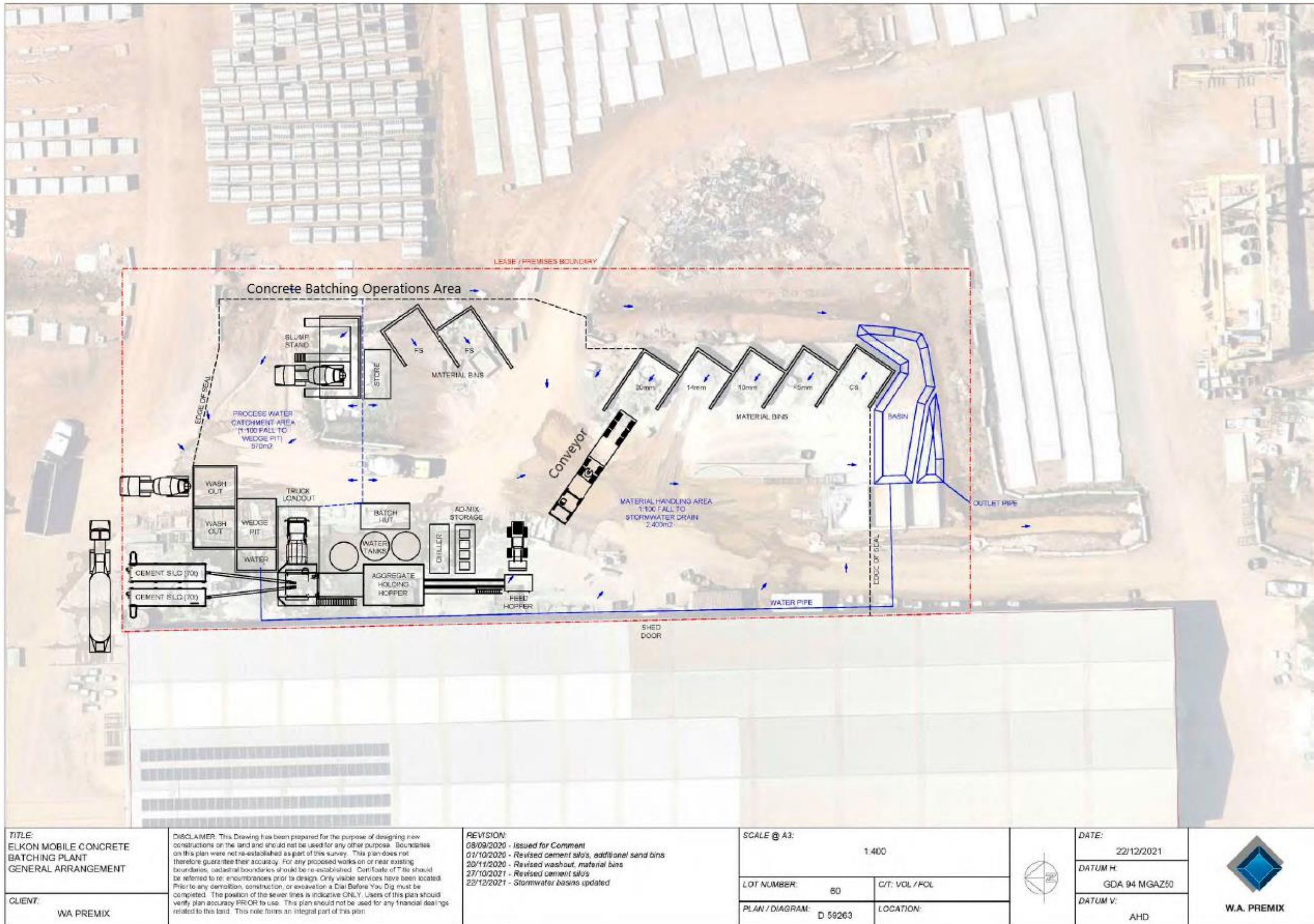


Figure 2: Proposed Site Layout



## Schedule 2: Premises boundary

The premises boundary is defined by the coordinates in Table 3.

**Table 3: Premises boundary coordinates**

<b>Easting</b>	<b>Northing</b>
405931	6430412
405991	6430412
405991	6430308
405933	6430308

Coordinates in GDA2020 MGA Zone 50