



Works approval number	W6750/2022/1
Works approval holder	Evolution Mining Limited
ACN	084 669 036
Registered business address	Level 24, 175 Liverpool Street SYDNEY NSW 2000
DWER file number	DER2022/000472
Duration	7/03/2023 to 7/03/2026
Date of issue	7/03/2023
Premises details	Kundana Gold Mine Mining tenements M16/72, M16/73, M16/87, M16/97, M16/157, M16/308, M16/309, M15/669, M15/993 M16/428, M24/924, L16/39, L16/105 and L16/106 As depicted in Schedule 1

Prescribed premises category description (Schedule 1, <i>Environmental Protection Regulations 1987</i>)	Assessed design capacity
Category 6: mine dewatering	12,000,000 tonnes per annual period

This works approval is granted to the works approval holder, subject to the attached conditions, on 7 March 2023, by:

A/SENIOR ENVIRONMENTAL OFFICER, INDUSTRY REGULATION

an officer delegated under section 20 of the *Environmental Protection Act 1986* (WA)

Works approval history

Date	Reference number	Summary of changes
7/03/2023	W6750/2022/1	Works approval granted.

Interpretation

In this works approval:

- (a) the words 'including', 'includes' and 'include' in conditions mean "including but not limited to", and similar, as appropriate;
- (b) where any word or phrase is given a defined meaning, any other part of speech or other grammatical form of that word or phrase has a corresponding meaning;
- (c) where tables are used in a condition, each row in a table constitutes a separate condition;
- (d) any reference to an Australian or other standard, guideline, or code of practice in this works approval:
 - (i) if dated, refers to that particular version; and
 - (ii) if not dated, refers to the latest version and therefore may be subject to change over time;
- (e) unless specified otherwise, any reference to a section of an Act refers to that section of the EP Act; and
- (f) unless specified otherwise, all definitions are in accordance with the EP Act.

NOTE: This works approval requires specific conditions to be met but does not provide any implied authorisation for other emissions, discharges, or activities not specified in this works approval.

Works approval conditions

The works approval holder must ensure that the following conditions are complied with:

Construction phase

Infrastructure and equipment

1. The works approval holder must:
 - (a) construct and install the infrastructure;
 - (b) in accordance with the corresponding construction and installation requirements; and
 - (c) at the corresponding infrastructure location; andas set out in Table 1.

Table 1: Infrastructure construction and installation requirements

	Infrastructure	Construction and installation requirements	Infrastructure location
1.	Dewatering pipelines from Hornet Pit to Pope John pipeline.	Constructed of 160mm High Density Polyethylene (HDPE). Required to meet the following standards: AS/NZS2033:2009: Installation of polyethylene pipe systems; AS/NZS 4129:2008 Fittings for polyethylene (PE) pipes for pressure applications; AS/NZS 4130:2009 Polyethylene (PE) pipes for pressure applications; and AS/ZNS 4131:2010 Polyethylene (PE) compounds for pressure pipes and fittings.	Pipeline route to be located as shown in Figure 2, Schedule 1.
2.	Secondary containment	The v-drains and scour pits in combination must have sufficient capacity to completely contain any spills for a period equal to the time between routine inspections.	Pipeline corridor to be located as shown in Figure 2, Schedule 1.
3.	Hornet dam	Constructed using non-acid forming material at a 2:1 batter with an approximate capacity of 6,043kL and lined with minimum 1mm HDPE. A float system will be installed on the dam to ensure that the dam does not overflow.	To be located as shown in Figure 2, Schedule 1.

Compliance reporting

2. The works approval holder must within 28 calendar days of an item of infrastructure or equipment required by condition 1 being constructed and / or installed:
 - (a) undertake an audit of their compliance with the requirements of condition 1; and
 - (b) prepare and submit to the CEO an Environmental Compliance Report on that compliance.
3. The Environmental Compliance Report required by condition 2, must include as a minimum the following:
 - (a) certification by a qualified engineer that the items of infrastructure or component(s) thereof, as specified in condition 1, have been constructed in accordance with the relevant requirements specified in condition 1;
 - (b) as constructed plans and a detailed site plan for each item of infrastructure or component of infrastructure specified in condition 1; and
 - (c) be signed by a person authorised to represent the works approval holder and contains the printed name and position of that person.

Time limited operations phase

Commencement and duration

4. The works approval holder may only commence time limited operations for an item of infrastructure identified in condition 1, where the Environmental Compliance Report as required by condition 2 has been submitted by the works approval holder for that item of infrastructure.
5. The works approval holder may conduct time limited operations for an item of infrastructure specified in condition 1 (as applicable):
 - (a) for a period not exceeding 180 calendar days from the day the works approval holder meets the requirements of condition 3 for that item of infrastructure; or
 - (b) until such time as a licence for that item of infrastructure is granted in accordance with Part V of the Environmental Protection Act 1986, if one is granted before the end of the period specified in condition 5(a).

Time limited operations requirements and emission limits

6. During time limited operations, the works approval holder is only authorised to discharge mine dewater to Hornet Dam and Pope John pit at the discharge points depicted in Schedule 1, Figure 1.
7. During time limited operations, the works approval holder must ensure that the infrastructure listed in Table 2 is maintained and operated in accordance with the corresponding operational requirements set out in Table 2.

Table 2: Infrastructure and equipment requirements during time limited operations

Site Infrastructure	Operational requirements
Dewatering pipelines and secondary containment	Minimum daily inspections when operating, recorded in a written log.

Hornet Dam	A minimum vertical freeboard of 1.0 m must be maintained.
Pope John pit	A minimum vertical freeboard of 6 m must be maintained below the pit crest level.

Monitoring during time limited operations

8. The works approval holder must monitor the specified parameters in accordance with Table 3 and record the results of all such monitoring.

Table 3: Discharge monitoring during time limited operations

Location	Parameter	Frequency	Unit	Method
Dewatering discharge to Pope John Pit (from Hornet Open Pit) ¹	Volumetric flow rate	Continuous	kL	Flow metering device
	Standing water level	Quarterly	metres below pit crest level	Spot sample

Note 1: When discharge is occurring during the month

Compliance reporting

9. The works approval holder must submit to the CEO a report on the time limited operations within 30 calendar days of the completion date of time limited operations or 30 calendar days before the expiration date of the works approval, whichever is the sooner.
10. The works approval holder must ensure the report required by condition 9 includes the following:
- a summary of the time limited operations, including timeframes and the volume of dewatering discharged;
 - a summary of monitoring results obtained during time limited operations under condition 8
 - the details of any complaints received during time limited operations in accordance with condition 11;
 - a summary of the environmental performance of all infrastructure as constructed or installed (as applicable), which includes records detailing any:
 - leaks or failures of the pipelines; and
 - the performance of the secondary containment in preventing releases to the environment.
 - a review of performance and compliance against the conditions of the works approval; and
 - where the manufacturer's design specifications and the conditions of this works approval have not been met, what measures will the works approval holder take to meet them, and what timeframes will be required to implement those measures.

Records and reporting (general)

- 11.** The works approval holder must record the following information in relation to complaints received by the works approval holder (whether received directly from a complainant or forwarded to them by the Department or another party) about any alleged emissions from the premises:

 - (a) the name and contact details of the complainant, (if provided);
 - (b) the time and date of the complaint;
 - (c) the complete details of the complaint and any other concerns or other issues raised; and
 - (d) the complete details and dates of any action taken by the works approval holder to investigate or respond to any complaint.
- 12.** The works approval holder must maintain accurate and auditable books including the following records, information, reports, and data required by this works approval:

 - (a) the works conducted in accordance with condition 1;
 - (b) any maintenance of infrastructure that is performed in the course of complying with condition 1;
 - (c) monitoring programmes undertaken in accordance with condition 8; and
 - (d) complaints received under condition 11.
- 13.** The books specified under condition 12 must:

 - (a) be legible;
 - (b) if amended, be amended in such a way that the original version(s) and any subsequent amendments remain legible and are capable of retrieval;
 - (c) be retained by the works approval holder for the duration of the works approval; and
 - (d) be available to be produced to an inspector or the CEO as required.

Definitions

In this works approval, the terms in Table 4 have the meanings defined.

Table 4: Definitions

Term	Definition
annual period	a 12 month period commencing from 1 January until 31 December in the same year.
AS/NZS 4130:2003	means Australian New Zealand Standard – Polyethylene (PE) pipes for pressure applications
AS/NZS 2033:2008	means Australian New Zealand Standard – Installation of polyethylene pipe systems
AS/NZS 4129:2008	means Australian New Zealand Standard – Fittings for polyethylene (PE) pipes
AS/NZS 4130:2009	means Australian New Zealand Standard – Polyethylene pipes for pressure applications
AS/NZS 4131:2010	means Australian New Zealand Standard – Polyethylene (PE) compounds for pressure pipes and fittings
books	has the same meaning given to that term under the EP Act.
CEO	means Chief Executive Officer. CEO for the purposes of notification means: Director General Department administering the <i>Environmental Protection Act 1986</i> Locked Bag 10 Joondalup DC WA 6919 info@dwer.wa.gov.au
Department	means the department established under section 35 of the <i>Public Sector Management Act 1994</i> and designated as responsible for the administration of Part V Division 3 of the EP Act.
discharge	has the same meaning given to that term under the EP Act.
emission	has the same meaning given to that term under the EP Act.
Environmental Compliance Report	means a report to satisfy the CEO that the conditioned infrastructure and/or equipment has been constructed and/or installed in accordance with the works approval.
EP Act	<i>Environmental Protection Act 1986</i> (WA).
EP Regulations	<i>Environmental Protection Regulations 1987</i> (WA).

Term	Definition
premises	the premises to which this licence applies, as specified at the front of this licence and as shown on the premises map (Figure 1) in Schedule 1 to this works approval.
prescribed premises	has the same meaning given to that term under the EP Act.
time limited operations	refers to the operation of the infrastructure and equipment identified under this works approval that is authorised for that purpose, subject to the relevant conditions.
works approval	refers to this document, which evidences the grant of the works approval by the CEO under section 54 of the EP Act, subject to the conditions.
works approval holder	refers to the occupier of the premises being the person to whom this works approval has been granted, as specified at the front of this works approval.

END OF CONDITIONS

Schedule 1: Maps

Premises map

The boundary of the prescribed premises is shown in the map below (Figure 1).

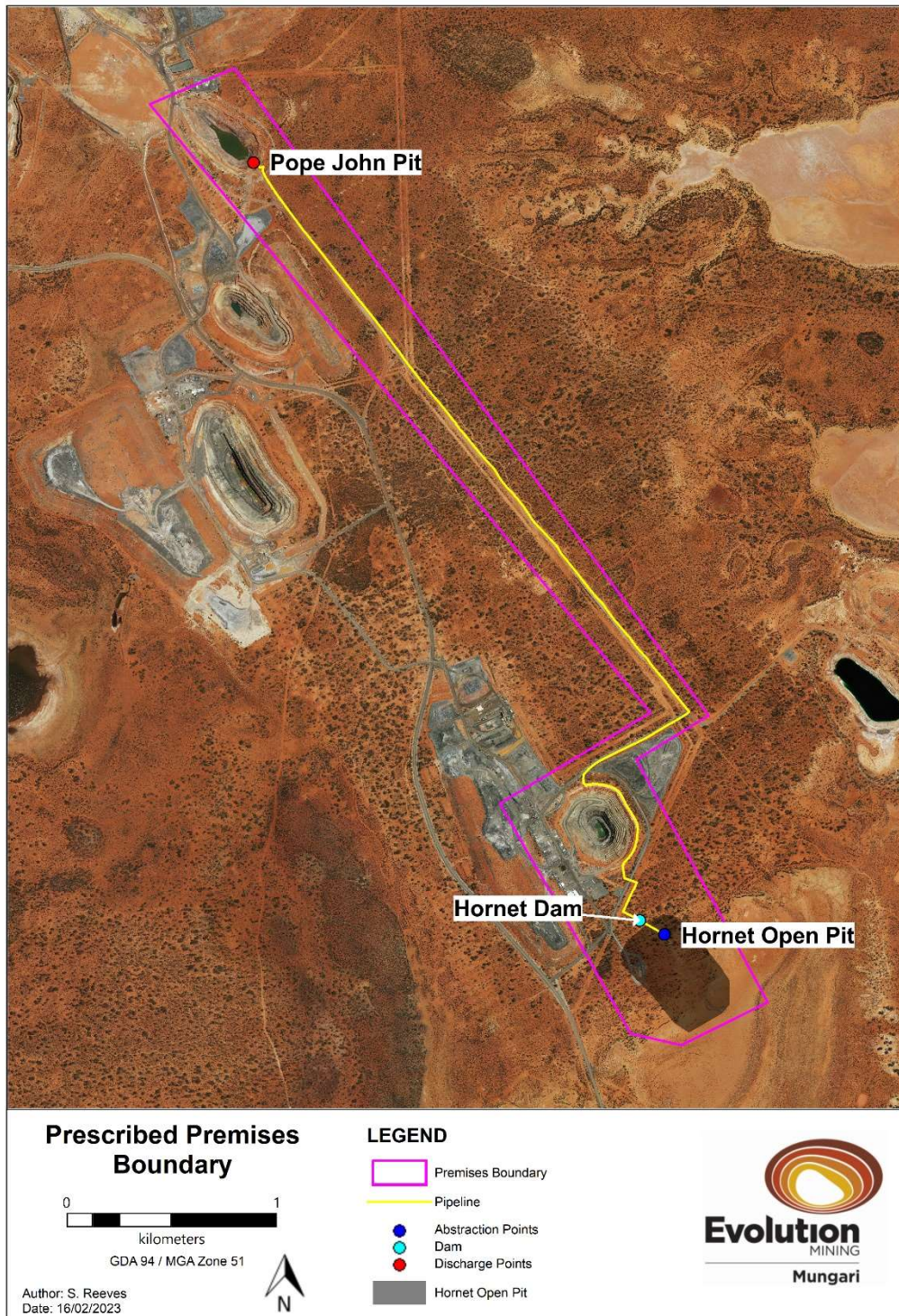


Figure 1: Map of the boundary of the prescribed premises

W6750/2022/1 (7/03/2023)

IR-T05 Works approval template (v6.0) (September 2022)

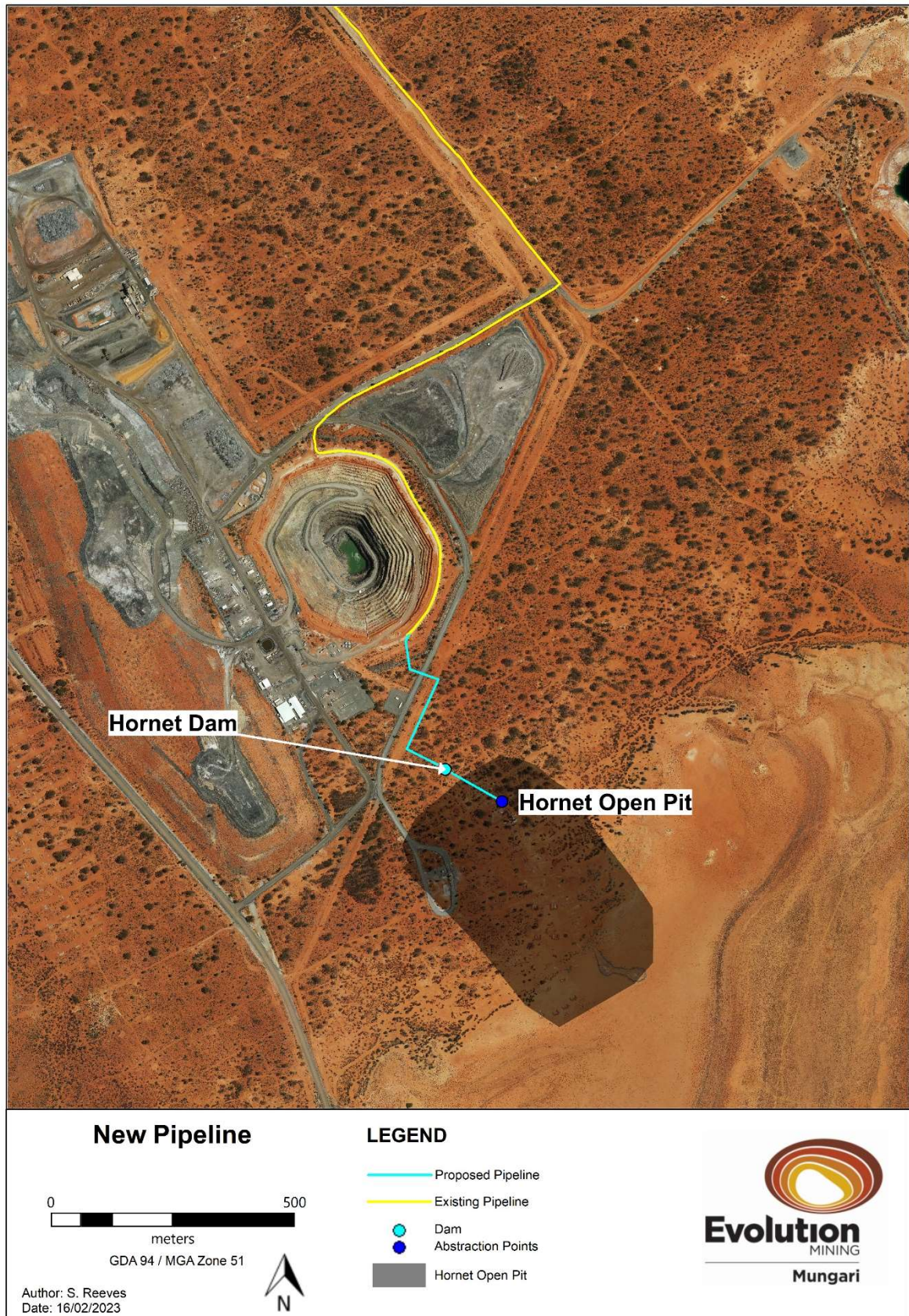


Figure 2: Hornet Open Pit proposed pipeline (blue)

[W6750/2022/1 \(7/03/2023\)](#)

IR-T05 Works approval template (v6.0) (September 2022)