



<b>Works approval number</b>	W6827/2023/1
<b>Works approval holder</b>	Kalgoorlie Consolidated Gold Mines Pty Ltd
<b>ACN</b>	009 377 619
<b>Registered business address</b>	Level 1, 388 Hay Street Subiaco WA 6008
<b>DWER file number</b>	DER2023/000350
<b>Duration</b>	02/11/2023 to 02/11/2028
<b>Date of issue</b>	02/11/2023
<b>Premises details</b>	<p>Mt Charlotte Mine Part of mining tenements M26/60, M26/61, M26/131, M26/261, M26/353, M26/383 and M26/744, Kalgoorlie WA 6430.</p> <p>As defined by the premises map attached to the issued works approval in Schedule 1 and the coordinates in Schedule 2.</p>

<b>Prescribed premises category description (Schedule 1, <i>Environmental Protection Regulations 1987</i>)</b>	<b>Assessed design capacity</b>
Category 6: Mine dewatering	2,000,000 tonnes per year

This works approval is granted to the works approval holder, subject to the attached conditions, on 2 November 2023, by:

A/Manager, Resources Industries  
REGULATORY SERVICES

an officer delegated under section 20 of the *Environmental Protection Act 1986* (WA)

## Works approval history

Date	Reference number	Summary of changes
02/11/2023	W6827/2023/1	Works approval granted.

## Interpretation

In this works approval:

- (a) the words 'including', 'includes' and 'include' in conditions mean "including but not limited to", and similar, as appropriate;
- (b) where any word or phrase is given a defined meaning, any other part of speech or other grammatical form of that word or phrase has a corresponding meaning;
- (c) where tables are used in a condition, each row in a table constitutes a separate condition;
- (d) any reference to an Australian or other standard, guideline, or code of practice in this works approval:
  - (i) if dated, refers to that particular version; and
  - (ii) if not dated, refers to the latest version and therefore may be subject to change over time;
- (e) unless specified otherwise, any reference to a section of an Act refers to that section of the EP Act; and
- (f) unless specified otherwise, all definitions are in accordance with the EP Act.

**NOTE:** This works approval requires specific conditions to be met but does not provide any implied authorisation for other emissions, discharges, or activities not specified in this works approval.

# Works approval conditions

The works approval holder must ensure that the following conditions are complied with:

## Construction phase

### Infrastructure and equipment

1. The works approval holder must:
  - (a) construct and install the infrastructure and equipment;
  - (b) in accordance with the corresponding design and construction requirements; and
  - (c) at the corresponding infrastructure location as set out in Table 1.

**Table 1: Design and construction requirements**

	Infrastructure	Design and construction requirements	Infrastructure location
1.	Southern dewatering pipeline and associated infrastructure	<ol style="list-style-type: none"><li>a) All pipelines to be manufactured according to AS4131;</li><li>b) All pipelines to be installed in accordance with AS2033;</li><li>c) Pipelines are to be banded, within V drains or buried;</li><li>d) Pipelines are to have telemetry leak detection systems installed to monitor leaks or pipeline failures;</li><li>e) Pipelines to have scour pits at strategic locations or low points on the land to completely contain spills from pipeline leaks or breaches for between inspections; and</li><li>f) Pump equipment to be installed underground to reduce noise emissions.</li></ol>	Within the prescribed premises as detailed in Figure 1, Schedule 1

### Compliance reporting

2. The works approval holder must within 30 calendar days of an item of infrastructure or equipment required by condition 1 constructed and/or installed:
  - (a) undertake an audit of their compliance with the requirements of condition 1; and
  - (b) prepare and submit to the CEO an Environmental Compliance Report on that compliance.
3. The Environmental Compliance Report required by condition 2, must include as a minimum the following:
  - (a) certification by a professional engineer that the item of infrastructure and components, as specified in condition 1, has been constructed in accordance with the relevant requirements specified in condition 1;
  - (b) as constructed plans or photographs and a detailed site plan for each item of infrastructure or component of infrastructure specified in condition 1; and

- (c) be signed by a person authorised to represent the works approval holder and contains the printed name and position of that person.

## Time limited operations phase

### Commencement and duration

4. The works approval holder may only commence time limited operations for an item of infrastructure identified in condition 1 where the Environmental Compliance Report as required by condition 2 has been submitted by the works approval holder for that item of infrastructure;
- (a) for a period not exceeding 180 calendar days from the day the works approval holder meets the requirements of condition 4 for that item of infrastructure; or
- (b) until such time as a licence for that item of infrastructure is granted in accordance with Part V of the *Environmental Protection Act 1986*, if one is granted before the end of the period specified in condition 4(a).

### Time limited operations requirements

5. The works approval holder must ensure that the emissions specified in Table 2 are discharged only from the corresponding discharge point and only at the corresponding discharge point location.

**Table 2: Authorised discharge points**

Emission	Discharge point	Discharge point location
Mine dewatering effluent from Mt Charlotte underground mine	Union Club Pit	'Union Club Pit' as shown in Figure 1, Schedule 1: Maps

6. During time limited operations, the works approval holder must ensure that the premises infrastructure and equipment listed in Table 3 and located at the corresponding infrastructure location is maintained and operated in accordance with the corresponding operational requirement set out in Table 3.

**Table 3: Infrastructure and equipment requirements during time limited operations**

	Site infrastructure and equipment	Operational requirement	Infrastructure location
1.	Dewatering pipelines	<ul style="list-style-type: none"> <li>Pipelines maintained and fit for operational use;</li> <li>Telemetry leak detection system installed to be maintained and operational;</li> <li>Undertake 48 hourly<sup>1</sup> visual inspections of the pipeline to ensure integrity; and</li> <li>Secondary containment and scour pits capacity maintained to reduce risk of discharge to the environment.</li> </ul>	Within the prescribed premises as detailed in Figure 1, Schedule 1
2.	Union Club Pit	<ul style="list-style-type: none"> <li>Water levels within the pit to not exceed a freeboard of 312</li> </ul>	

		mAHD; and <ul style="list-style-type: none"> <li>Undertake monthly inspections to ensure the freeboard is not exceeded.</li> </ul>	
3.	Gravity Dam	<ul style="list-style-type: none"> <li>Dam HDPE liner to be maintained and fit for use;</li> <li>Water levels within the dam not to exceed the freeboard of 300 mm; and</li> <li>Undertake 48 hourly<sup>1</sup> visual inspections to ensure the freeboard is not breached.</li> </ul>	

Note 1: If circumstances at the scheduled time of inspection are identified as immediately hazardous to personnel, the inspection should be undertaken as soon as practicable, and the reason(s) recorded.

### Monitoring during time limited operations

7. The works approval holder must monitor emissions during time limited operations in accordance with Table 4.

**Table 4: Emissions and discharge monitoring during time limited operations**

Emission	Discharge Point	Parameter	Frequency	Unit
Mine dewatering effluent from Mt Charlotte underground mine	Union Club Pit	Volume of water discharge to Union Club pit	Monthly	kL
		Volume of water pumped out of Union Club Pit to Gravity Dam.		
		Pit lake level		mbgl

### Records and reporting

8. The works approval holder must record the following information in relation to complaints received by the works approval holder (whether received directly from a complainant or forwarded to them by the Department or another party) about any alleged emissions from the premises:
- the name and contact details of the complainant, (if provided);
  - the time and date of the complaint;
  - the complete details of the complaint and any other concerns or other issues raised; and
  - the complete details and dates of any action taken by the works approval holder to investigate or respond to any complaint.
9. The works approval holder must maintain accurate and auditable books including the following records, information, reports, and data required by this works approval:
- the works conducted in accordance with condition 6;
  - any maintenance of infrastructure that is performed in the course of complying with condition 6;

- (c) monitoring programmes undertaken in accordance with condition 7; and
- (d) complaints received under condition 8.

**10.** The books specified under condition 9 must:

- (a) be legible;
- (b) if amended, be amended in such a way that the original version(s) and any subsequent amendments remain legible and are capable of retrieval;
- (c) be retained by the works approval holder for the duration of the works approval; and
- (d) be available to be produced to an inspector or the CEO as required.

## Definitions

In this works approval, the terms in Table 5 have the meanings defined.

**Table 5: Definitions**

Term	Definition
AHD	means Australian Height Datum
AS	means Australian Standards
books	has the same meaning given to that term under the EP Act.
CEO	means Chief Executive Officer. CEO for the purposes of notification means: Director General Department administering the <i>Environmental Protection Act 1986</i> Locked Bag 10 Joondalup DC WA 6919 <a href="mailto:info@dwer.wa.gov.au">info@dwer.wa.gov.au</a>
Department	means the department established under section 35 of the <i>Public Sector Management Act 1994</i> and designated as responsible for the administration of Part V Division 3 of the EP Act.
discharge	has the same meaning given to that term under the EP Act.
emission	has the same meaning given to that term under the EP Act.
Environmental Compliance Report	means a report to satisfy the CEO that the conditioned infrastructure and equipment has been constructed and installed in accordance with the works approval.
EP Act	<i>Environmental Protection Act 1986 (WA)</i> .
EP Regulations	<i>Environmental Protection Regulations 1987 (WA)</i> .
HDPE	means High Density Polyethylene
mbgl	means meters below ground level
monthly	means that there is at least 15 days in between the days on which monitoring was taken in successive months.
premises	the premises to which this licence applies, as specified at the front of this licence and as shown on the premises map (Figure 1) in Schedule 1: Maps, to this works approval.
prescribed premises	has the same meaning given to that term under the EP Act.
time limited operations	refers to the operation of the infrastructure and equipment identified under this works approval that is authorised for that

Term	Definition
	purpose, subject to the relevant conditions.
works approval	refers to this document, which evidences the grant of the works approval by the CEO under section 54 of the EP Act, subject to the conditions.
works approval holder	refers to the occupier of the premises being the person to whom this works approval has been granted, as specified at the front of this works approval.

---

**END OF CONDITIONS**



# Schedule 1: Maps

## Premises map

The boundary of the prescribed premises is shown in the map below (Figure 1).

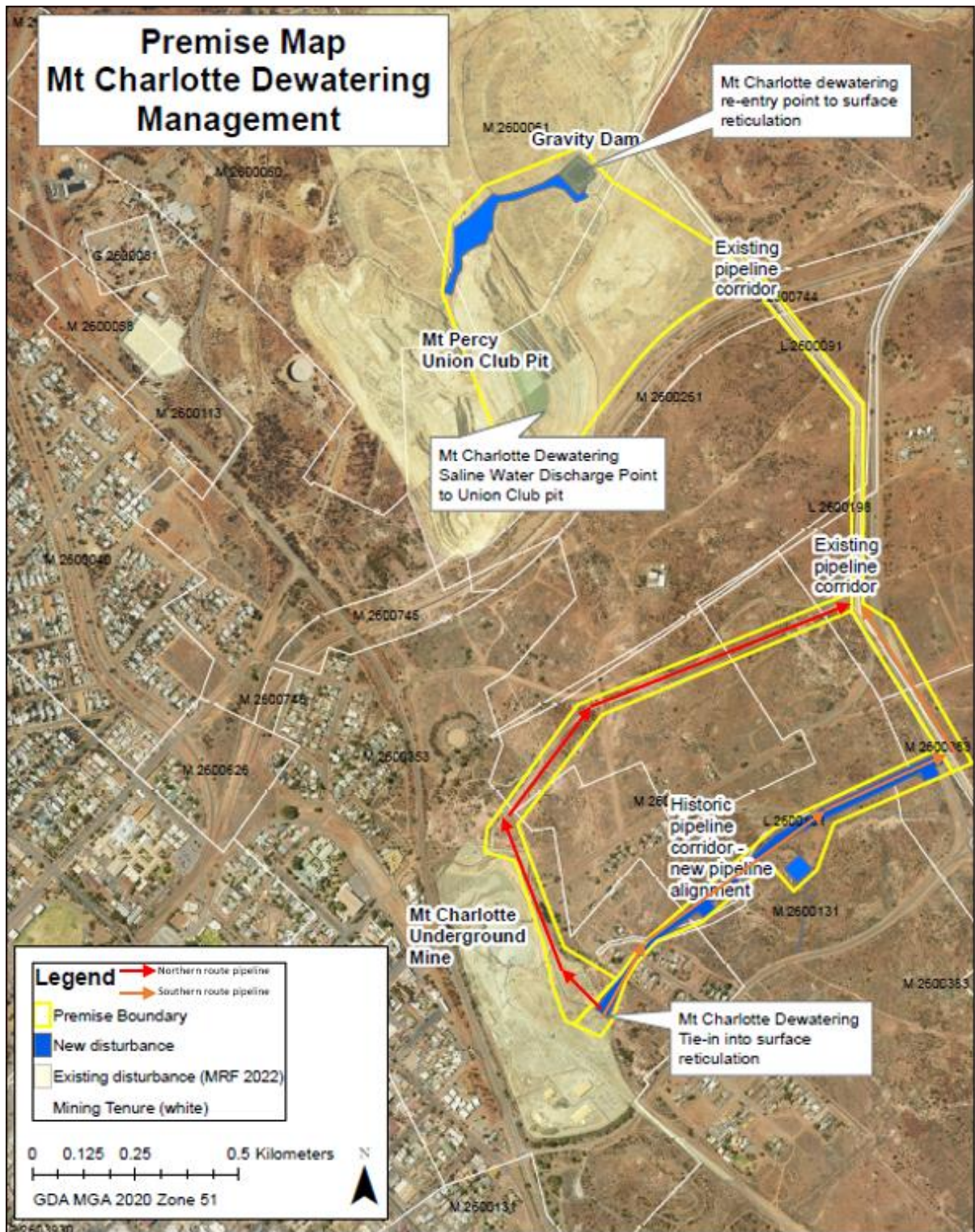


Figure 1: Map of the boundary of the prescribed premises

## Schedule 2: Premises boundary

The corners of the premises boundary are the coordinates listed in Table 6.

**Table 6: Premises boundary coordinates (GDA2020)**

	<b>Easting</b>	<b>Northing</b>	<b>Zone</b>
1.	355059.1641	6599507.107	51
2.	355034.8147	6599497.208	51
3.	355006.6572	6599484.098	51
4.	354973.1821	6599466.536	51
5.	354916.0691	6599431.216	51
6.	354876.5054	6599400.384	51
7.	354847.9392	6599375.795	51
8.	354777.9136	6599299.468	51
9.	354741.5232	6599251.279	51
10.	354644.3562	6599118.866	51
11.	354571.7861	6599019.596	51
12.	354470.7087	6599074.292	51
13.	354317.723	6599480.39	51
14.	354337.4797	6599652.386	51
15.	354420.64	6599739.345	51
16.	354655.8222	6599834.728	51
17.	354726.4914	6599883.188	51
18.	354996.1652	6599868.448	51
19.	354739.2933	6597819.549	51
20.	354776.8825	6597869	51
21.	354824.662	6597924.218	51
22.	355135.0341	6598196.289	51
23.	355517.8337	6598377.034	51

24.	355553.619	6598319.962	51
25.	355266.6057	6598195.881	51
26.	355225.5679	6598083.664	51
27.	355169.2115	6598031.277	51
28.	355112.7084	6598096.034	51
29.	354946.6283	6597957.227	51
30.	354839.1474	6597911.077	51
31.	354790.707	6597860.556	51
32.	354764.3681	6597819.648	51
33.	354728.3936	6597715.801	51
34.	355600.7343	6598342.059	51
35.	355308.8262	6598710.301	51
36.	355022.4278	6599607.208	51
37.	355338.2025	6599211.537	51
38.	355337.6658	6598727.292	51
39.	355308.9236	6598755.119	51
40.	355407.0432	6598681.69	51
41.	354644.8969	6598483.259	51
42.	354704.8409	6598458.301	51
43.	354427.0016	6598183.296	51
44.	354422.0106	6598127.314	51
45.	354500.2753	6598192.508	51
46.	354493.9457	6598106.068	51
47.	354613.175	6597895.532	51
48.	354565.0976	6597898.502	51
49.	354583.0893	6597808.755	51
50.	354615.2627	6597719.008	51

51.	355309.8937	6599200.894	51
52.	354701.1822	6597679.361	51
53.	354949.314	6599452.931	51
54.	354889.9825	6599411.554	51
55.	354860.5444	6599386.721	51
56.	354829.3891	6599357.598	51
57.	354818.0408	6599346.251	51
58.	354792.2641	6599317.319	51
59.	354764.5358	6599281.941	51
60.	354753.0696	6599266.279	51
61.	354727.4354	6599231.726	51
62.	354708.5304	6599205.875	51
63.	354695.8279	6599188.452	51