



<b>Licence number</b>	L6911/1997/11
<b>Licence holder</b>	Shire of Gingin
<b>Registered business address</b>	7 Brockman Street, GINGIN WA 6503
<b>DWER file number</b>	DER5528/1
<b>Duration</b>	13/06/2024 to 12/06/2044
<b>Date of issue</b>	12/06/2024
<b>Premises details</b>	Lancelin Waste Management Facility  Lot 11089 on Plan 188900 and part Road Reserve (PIN 11744226) Lancelin Road  LANCELIN WA 6044  As defined by the coordinates in Schedule 2

<b>Prescribed premises category description (Schedule 1, <i>Environmental Protection Regulations 1987</i>)</b>	<b>Assessed production / design capacity</b>
<b>Category 62: Solid waste depot:</b> premises on which waste is stored or sorted, pending final disposal or re-use, other than in the course of operating — (a) a refund point (as defined in the Waste Avoidance and Resource Recovery Act 2007 section 47C(1)) (a refund point); or (b) a facility or other place (an aggregation point) for the aggregation of containers that have been returned to refund points until those containers are accepted for processing or disposal.	2,000 tonnes per annual period.
<b>Category 64: Class II or III putrescible landfill site:</b> premises (other than clean fill premises) on which waste of a type permitted for disposal for this category of prescribed premises, in accordance with the Landfill Waste Classification and Waste Definitions 1996, is accepted for burial.	5,000 tonnes per annual period

This licence is granted to the licence holder, subject to the attached conditions, on 12 June 2024, by:

Tanya Johnston  
**A/SENIOR ENVIRONMENTAL OFFICER, INDUSTRY REGULATION**  
an officer delegated under section 20 of the *Environmental Protection Act 1986* (WA)

[L6911/1997/10](#)

## Licence history

Date	Reference number	Summary of changes
16/04/2000	L6900/1997/1	Licence issued
9/05/2001	L6911/1997/2	Licence reissued
29/05/2002	L6911/1997/3	Licence reissued
16/04/2003	L6911/1997/4	Licence reissued
19/04/2004	L6911/1997/5	Licence reissued
7/04/2005	L6911/1997/6	Licence reissued
7/04/2006	L6911/1997/7	Licence reissued
8/04/2007	L6911/1997/8	Licence reissued
13/06/2008	L6911/1997/9	Licence reissued
15/05/2013	L6911/1997/10	Licence reissued
29/04/2016	L6911/1997/10	Notice of amendment and schedule of licences with amended expiry dates
16/05/2022	L6911/1997/10	Notice of amendment and schedule of licences with amended reporting conditions
8/06/2023	L6911/1997/10	Amendment to extend licence duration by 12 months to allow the department sufficient time to review the licence.
12/06/2024	L6911/1997/11	Licence renewal to reflect current site operations

## Interpretation

In this licence:

- (a) the words 'including', 'includes' and 'include' in conditions mean "including but not limited to", and similar, as appropriate;
- (b) where any word or phrase is given a defined meaning, any other part of speech or other grammatical form of that word or phrase has a corresponding meaning;
- (c) where tables are used in a condition, each row in a table constitutes a separate condition;
- (d) any reference to an Australian or other standard, guideline, or code of practice in this licence:
  - (i) if dated, refers to that particular version; and
  - (ii) if not dated, refers to the latest version and therefore may be subject to change over time;
- (e) unless specified otherwise, any reference to a section of an Act refers to that section of the EP Act; and
- (f) unless specified otherwise, all definitions are in accordance with the EP Act.

**NOTE:** This licence requires specific conditions to be met but does not provide any implied authorisation for other emissions, discharges, or activities not specified in this licence.

## Licence conditions

The licence holder must ensure that the following conditions are complied with:

### Infrastructure

- The licence holder must ensure that the site infrastructure and equipment listed in Table 1 and located at the corresponding infrastructure location is maintained and operated in accordance with the corresponding operational requirement set out in Table 1.

**Table 1: Infrastructure and equipment requirements**

Site infrastructure and equipment	Specification and location
Site office and Gatehouse	As depicted in Schedule 1, Figure 2
Greenwaste area	Three sided bunded stockpile area as depicted in Schedule 1, Figure 2 Designed to ensure that no ingress of stormwater runoff from outside of the greenwaste storage area occurs
Scrap metal stockpile area	Stored on insitu hardstand as depicted in Schedule 1, Figure 2
C&D stockpile area	Stored on insitu hardstand as depicted in Schedule 1, Figure 2
Tyre storage area	Stored on insitu hardstand as depicted in Schedule 1, Figure 2
Cardboard bins	Caged containers on in situ hardstand as depicted in Schedule 1, Figure 2
Landfill cells	Unlined landfill cells as depicted in Schedule 1, Figure 2
Asbestos burial cells	Unlined landfill cells as depicted in Schedule 1, Figure 2
Waste oil collection facility	Enclosed oil collection facility as depicted in Schedule 1, Figure 2
Drummuster compound	Fenced compound for triple rinsed containers as depicted in Schedule 1, Figure 2
Used lead-acid battery storage	Pallets on insitu hardstand as depicted in Schedule 1, Figure 2
E-waste storage	Caged container on insitu hardstand as depicted in Schedule 1, Figure 2
Hazardous waste storage area	240L mobile bin on insitu hardstand as depicted in Schedule 1, Figure 2
Groundwater monitoring wells	As per the design, construction and installation requirements outlined in condition 2.
Mobile water tank	Maintained in working order at all times for wetting down surfaces if required and for fire suppression.

2. The works approval holder must design, construct, and install groundwater monitoring wells in accordance with the requirements specified in Table 2.

**Table 2: Infrastructure requirements – groundwater monitoring wells**

Infrastructure	Design, construction, and installation requirements	Monitoring well location(s)	Timeframe
<p>Groundwater monitoring well(s) MW1 – MW4</p>	<p><u>Well design and construction:</u>                      Designed and constructed in accordance with <i>ASTM D5092/D5092M-16: Standard practice for design and installation of groundwater monitoring bores</i>.                      Well screens must target the part, or parts, of the aquifer most likely to be affected by contamination<sup>1</sup>.</p>	<p>As depicted in Schedule 1, Figure 3</p>	<p>Must be constructed, developed (purged), and determined to be operational by 13 December 2024</p>
	<p><u>Logging of borehole:</u>                      Soil samples must be collected and logged during the installation of the monitoring wells.                      A record of the geology encountered during drilling must be described and classified in accordance with the Australian Standard Geotechnical Site Investigations AS1726.                      Any observations of staining / odours or other indications of contamination must be included in the bore log.</p>		
	<p><u>Well construction log:</u>                      Well construction details must be documented within a well construction log to demonstrate compliance with <i>ASTM D5092/D5092M-16</i>. The construction logs shall include elevations of the top of casing position to be used as the reference point for water-level measurements, and the elevations of the ground surface protective installations.</p>		
	<p><u>Well development:</u>                      All installed monitoring wells must be developed after drilling to remove fine sand, silt, clay and any drilling mud residues from around the well screen to ensure the hydraulic functioning of the well. A detailed record should be kept of well development activities and included in the well construction log.</p>		
	<p><u>Installation survey:</u> the vertical (top of casing) and horizontal position of each monitoring well must be surveyed and subsequently mapped by a suitably qualified surveyor.</p>		
	<p><u>Well network map:</u> a well location map (using aerial image overlay) must be prepared and include the location of all monitoring wells in the monitoring network and their respective identification numbers.</p>		

Note 1: refer to Section 8 of Schedule B2 of the *Assessment of Site Contamination NEPM* for guidance on well screen depth and length.

3. The works approval holder must, within 60 calendar days of the monitoring wells being constructed, submit to the CEO a well construction report evidencing compliance with the requirements of condition 2.

### Waste acceptance

4. The licence holder shall only accept waste on to the Premises if:
  - (a) it is of a type listed in Table 3; and
  - (b) the quantity accepted is below any quantity limit listed in Table 3
  - (c) it meets any specification listed in Table 3.

**Table 3: Waste acceptance**

Waste type	Quantity limit per annual period	Acceptance specification
Clean fill	None Specified	None specified
Putrescible waste	Combined total of 5,000 tonnes per annual period	Kerbside collected waste, and drop off waste from municipal and commercial sources  Must comply with Class II waste acceptance criteria in the document titled Landfill Waste Classification and Waste Definitions 1996 (as amended 2019)
Special Waste Type 1		Cement bonded asbestos.  No fibrous asbestos shall be accepted.
Contaminated Solid Waste		Must comply with Class II waste acceptance criteria in the document titled Landfill Waste Classification and Waste Definitions 1996 (as amended 2019)
Inert Waste Type 1	Combined total of 2,000 tonnes per annual period	Construction and demolition waste.  Waste suspected of containing ACM or asbestos must be treated as being Special Waste Type 1.
Inert Waste Type 2		Tyres
Greenwaste		Limited to lawn clippings, leaves, plants, bark, branches, tree trunks and stumps.  Excludes material from source-separated kerbside municipal collections of designated garden organics (GO) bins.
Scrap Metal		Car bodies must not be accepted  Whitegoods must be degassed prior to acceptance.
E-waste		Electronic, electrical and battery-powered items that have been discarded or no longer in working order

## Department of Water and Environmental Regulation

Waste type	Quantity limit per annual period	Acceptance specification
Hazardous Waste – Fluorescent tubes		Fluorescent tubes, compact fluorescent lamps and light fittings
Hazardous Waste – Used batteries		Used lead acid batteries
Hazardous Waste – Used agricultural and veterinary chemical containers		Limited to cleaned agricultural and veterinary chemical containers with a capacity of at least 1 L/kg but not greater than 205 L/kg. Containers must be rinsed and be free of chemical residue.
Waste oil		None specified

Note 1: Additional requirements for the acceptance of controlled waste (including asbestos) are set out in the *Environmental Protection (Controlled Waste) Regulations 2004*.

Note 2: Additional requirements for the acceptance, handling and storage of dangerous goods are set out in the *Dangerous Goods Safety Act 2004* codes of practice.

5. The licence holder shall ensure that where waste does not meet the waste acceptance criteria set out in condition 4 it is removed from the Premises by the delivery vehicle or, where that is not possible, stored in a quarantined storage area or container and removed to an appropriately authorised facility as soon as practicable.

## Waste processing

6. The licence holder shall ensure that wastes accepted onto the Premises are only subjected to the process(es) set out in Table 4 and in accordance with any process limits and specifications described in that Table.

**Table 4: Waste processing**

Waste type	Process	Process limits and specifications
Clean Fill	Receipt, handling and storage prior to re-use on site or disposal by landfilling.	None specified
Putrescible Waste	Receipt and handling prior to disposal by landfilling	Processed in accordance with condition 7
Inert Waste Type 1	Receipt, handling and storage prior to re-use on site or disposal by landfilling.	Crushing and screening of Inert Waste Type 1 is not permitted.
Inert Waste Type 2	Receipt, handling and storage prior	<ul style="list-style-type: none"> <li>Tyres must be stored in the designated tyre store area with at least 2 m separation distance from any combustible material, building or fence.</li> </ul>

Waste type	Process	Process limits and specifications
	to off-site disposal.	<ul style="list-style-type: none"> <li>• No more than 100 tyre units to be stored onsite at any time; and</li> <li>• Must be sent to an appropriately licensed facility.</li> </ul>
Greenwaste	Receipt, handling, shredding and storage prior to burning or disposal by landfilling	<ul style="list-style-type: none"> <li>• Greenwaste must be stored in windrows and surrounded by a three sided insitu bund</li> <li>• Stored in accordance with the below specifications:</li> <li>• Stockpiles/windrows must be no larger than 50 m long, 10 m wide and 5 m high.</li> <li>• Stockpiles/windrows must be separated by at least 10 m of clear ground and clear of any combustible material.</li> <li>• No greater than 2 stockpiles must be stored at any one time.</li> <li>• A 75 m buffer zone containing a fuel load below 4 tonnes per hectare must be maintained at all times.</li> <li>• Regularly monitor temperature to ensure temperatures within stockpiles/windrows are maintained below 75°C.</li> <li>• Greenwaste must dried and seasoned for at least 2 months before burning</li> <li>• Must be burnt in a designated area at least 25 metres from any active disposal areas or the boundary of the premises</li> <li>• Must be burnt in a manner to minimise the generation of smoke</li> <li>• Must be burnt in windrows or trenches</li> <li>• Provide an adequate water supply and distribution system to prevent fires from escaping the designated area</li> <li>• Restrict the volume of greenwaste to be burnt such that it is completely burnt during daylight hours</li> <li>• Licence holder or site operator must be in attendance until the fire until it is extinguished</li> <li>• Notify the CEO and DFES at least 24 hours prior to burning commencing</li> <li>• Must not take place during DFES prohibited or restricted burning periods</li> </ul>
Special Waste Type 1	Receipt and handling prior to disposal by landfilling	<ul style="list-style-type: none"> <li>• Before entry to the site, asbestos material must be wrapped in heavy duty plastic or other suitable material</li> <li>• The disposal area(s) must be defined by grid references on the site plan</li> <li>• A copy of the site plan marked with the locations used for asbestos disposal must be kept as a permanent record and made available for viewing upon request</li> </ul>



Waste type	Process	Process limits and specifications
		<ul style="list-style-type: none"> <li>Asbestos must not be deposited within 2m of the final waste profile</li> </ul>
Contaminated Solid Waste	Receipt and handling prior to disposal by landfilling	<ul style="list-style-type: none"> <li>Contaminated solid waste must be inspected by the licence holder or their representative prior to burial</li> <li>Contaminated solid waste must be accompanied by documentary evidence that it meets the Class II waste acceptance criteria in the document titled Landfill Definitions</li> </ul>
Hazardous waste	Receipt, handling and storage prior to off-site disposal.	<ul style="list-style-type: none"> <li>Only to be stored in the storage area as depicted in Schedule 1, Figure 2</li> <li>Hazardous wastes (excluding paint) shall be stored in dedicated impermeable bunded and covered storage areas</li> <li>Paint shall be stored in dedicated storage containers</li> <li>Shall not be decanted or treated at the premises</li> <li>Used lead acid batteries must be stored in a self-bunded and covered battery storage area</li> <li>Shall not be stored on the site for longer than 90 days</li> <li>Must be sent to an appropriately licensed facility</li> </ul>
E-waste	Receipt, handling and storage prior to off-site disposal.	<ul style="list-style-type: none"> <li>Only to be stored in the storage area as depicted in Schedule 1, Figure 2;</li> <li>Must be stored within bunded containment;</li> <li>Must be protected by a weatherproof covering and</li> <li>Must be sent to an appropriately licensed facility</li> </ul>
Waste oil	Receipt, handling and storage prior to off-site disposal.	<ul style="list-style-type: none"> <li>Contained within a self-bunded tank located within the storage area depicted in Schedule 1, Figure 2</li> <li>Must not be processed or treated onsite</li> <li>Must be covered to prevent the ingress of stormwater</li> <li>No more than 1,000 Litres of waste oil can be stored at the premises at any one time</li> <li>Must be sent to an appropriately licensed facility</li> </ul>

7. The licence holder must take the following measures when landfilling activities are conducted at the premises:
- landfilling must not occur within 35 metres of the premises boundary;
  - waste must be placed within a defined trench or within a bunded area;
  - restrict the tipping area to no greater than 30 metres in length and 2 metres in height above ground level; and
  - stockpile sufficient cover material to allow waste to be covered in accordance with condition 9 for a period of two weeks and to cover waste in the event of a fire.

8. The licence holder must maintain a sign at the entrance to the premises which clearly displays the following:
  - (a) hours of operation (if applicable);
  - (b) contact telephone number for information and complaints or notification of fires;
  - (c) where applicable, a list of materials acceptable for recycling and the location of where they can be deposited on the premises;
  - (d) the types of waste that must not be deposited on the premises and a contact telephone number for alternative disposal options; and
  - (e) a warning, indicating penalties for people lighting fires.

### Cover requirements

9. The licence holder shall ensure that cover is applied and maintained on landfilled waste types in accordance with the corresponding cover requirements in Table 6 and Table 7 and that sufficient stockpiles of cover are maintained on the premises at all times to meet the requirements of this condition.

**Table 5: Infrastructure requirements – groundwater monitoring wells**

Waste type	Material	Depth	Timeframe
Clean Fill	No cover requirement		
All waste types (excluding Clean Fill and Inert Waste Type 1)	Inert Waste Type 1 or Clean Fill	150 mm	As soon as practicable and not later than the end of the working day that the waste was deposited.
Special Waste Type 1	Inert Waste Type 1 or Clean Fill	1000 mm	Asbestos waste must be covered with 1m of cover material as soon as practicable after deposit and prior to any compaction of the waste

**Table 6: Interim cover requirements**

Waste type	Material	Depth	Timeframe
All waste types	Clean Fill	1000 mm	Within six months of the completion of landfilling within a cell/trench.

### Emissions and discharges

10. The licence holder must ensure wind-blown waste is contained within the boundaries of the premises by installing and maintaining a 1.8 metre high perimeter fence, installing and maintaining litter control screens on three sides of the tipping area, and regularly compacting and covering the waste.
11. The licence holder must ensure windblown waste is collected from the landfill area and litter control screens on a daily basis and from the greater premises (including, perimeter fencing, roads and vegetated areas) on at least a weekly basis and returned to the tipping area or appropriately contained.

## Department of Water and Environmental Regulation

12. The licence holder must not burn nor allow the burning of non-greenwaste on the premises.
13. The licence holder must extinguish any unauthorised fire on the premises as soon as possible;
14. The licence holder must ensure that stormwater on the site is adequately managed to prevent stormwater run-off becoming contaminated by the activities and operations undertaken at the premises.
15. The licence holder must maintain separation distance of at least three metres between the base of the current and future waste disposal areas and the highest level of the groundwater.
16. The works approval holder must ensure that dust emitted from the premises does not unreasonably interfere with the health, welfare, convenience, comfort or amenity of any person who is not on the premises.

## Monitoring

### General monitoring

17. The licence holder shall ensure that:
  - (a) All water samples are collected and preserved in accordance with AS/NZS 5667.1;
  - (b) All groundwater sampling is conducted in accordance with AS/NZS 5667.11;
  - (c) All laboratory samples are submitted to and tested by a laboratory with NATA accreditation for the parameters being measured unless indicated otherwise within the relevant table.
18. The licence holder must ensure that:
  - (a) quarterly monitoring is undertaken at least 45 days apart; and
  - (b) annual monitoring is undertaken at least 9 months apart.
19. The licence holder must ensure that all monitoring equipment used on the premises is to comply with the conditions of this Licence is calibrated in accordance with the manufacturer's specifications.
20. The licence holder must, where the requirements for calibration cannot be practicably met, or a discrepancy exists in the interpretation of the requirements, bring these issues to the attention of the CEO accompanied with a report comprising details of any modifications to the methods.

### Monitoring of inputs and outputs

21. The licence holder must undertake the monitoring in Table 7 according to the specifications in that table.

**Table 7: Monitoring of inputs and outputs**

Input/Output	Parameter	Units	Frequency
Waste inputs	As specified in condition 4	tonnes	Each load arriving at the premise
Waste outputs	Waste type as defined in the Landfill Definitions	tonnes	Each load leaving or rejected from the premises

### Process monitoring

22. The licence holder shall undertake the process monitoring requirements outlined in Table 8 in accordance with the specifications outlined in that table.

**Table 8: Process monitoring requirements**

Monitoring point	Parameter	Unit	Frequency	Method
Green waste stockpiles/windrows	Internal temperature	°C	Weekly	None specified

### Groundwater monitoring

23. The licence holder must monitor groundwater for concentrations of the identified parameter(s) in accordance with Table 9.

**Table 9: Groundwater monitoring of ambient concentrations**

Monitoring point reference and location	Parameter	Units	Averaging period	Frequency
MW1 – MW4 as depicted Schedule 1, Figure 3	Standing water level <sup>1</sup>	m(AHD)	Spot sample	Quarterly
	pH <sup>1</sup>	-		
	Electrical conductivity <sup>1</sup>	µS/cm		
	Redox potential <sup>1</sup>	Eh		
	Chemical oxygen demand	mg/L		
	Nitrate-nitrogen			
	Ammonia-nitrogen			
	Total Nitrogen			
	Total Phosphorus			
	Total dissolved solids			

Monitoring point reference and location	Parameter	Units	Averaging period	Frequency
	Total organic carbon			
	Dissolved oxygen <sup>1</sup>			
	Dissolved methane			
	Major cations and anions: calcium, magnesium, potassium, sodium, chloride, bicarbonate and sulphate			
	Heavy metals: Aluminium, Arsenic, Cadmium, Chromium, Copper, Iron (total), Lead, Manganese, Mercury, Nickel, Selenium and Zinc			
	Organics: Phenols, Polyaromatic hydrocarbons (PAH), Organochlorine pesticides, Organophosphate pesticides (Demeton-S-Methyl, Diazinon, Dimethoate, Fenamiphos, Fenthion, Malathion and Parathion), Polychlorinated biphenyls (PCB), Atrazine, BTEX (benzene, toluene, ethylbenzene, xylenes), Total Petroleum Hydrocarbons and Trichloroethylene/ Perchloroethylene			
	PFOS; PFOA; PFHxS			

Note 1: In-field non-NATA accredited analysis permitted.

## Record keeping

- 24.** The licence holder must maintain accurate and auditable books including the following records, information, reports, and data required by this licence:
- the calculation of fees payable in respect of this licence;
  - the works conducted in accordance with condition 2 of this licence;
  - any maintenance of infrastructure that is performed in the course of complying with condition 1 of this licence;
  - monitoring programmes undertaken in accordance with conditions 22 and 23 of this licence; and
  - complaints received under condition 26 of this licence.
- 25.** The books specified under condition 25 must:
- be legible;
  - if amended, be amended in such a way that the original version(s) and any subsequent amendments remain legible and are capable of retrieval;
  - be retained by the licence holder for the duration of the licence; and

## Department of Water and Environmental Regulation

- (d) be available to be produced to an inspector or the CEO as required.
- 26.** The licence holder must record the following information in relation to complaints received by the licence holder (whether received directly from a complainant or forwarded to them by the Department or another party) about any alleged emissions from the premises:
- (a) the name and contact details of the complainant, (if provided);
  - (b) the time and date of the complaint;
  - (c) the complete details of the complaint and any other concerns or other issues raised; and
  - (d) the complete details and dates of any action taken by the licence holder to investigate or respond to any complaint.

## Reporting

- 27.** The licence holder must prepare and submit to the CEO by 13 June 2025, a landfill closure management plan which must include:
- (a) Details of future intended land use;
  - (b) Final landform and surface contours;
  - (c) A proposed filling schedule and timeframes to achieve final waste contours for all landfill cells
  - (d) Landfill cap design detail and drawings (specifications and materials to be used in the final cap);
  - (e) Stormwater and landfill gas management measures for the final landform;
  - (f) Details on post-closure monitoring and aftercare management; and
  - (g) Revegetation requirements.
- 28.** The licence holder must:
- (a) undertake an audit of their compliance with the conditions of this licence during the preceding annual period; and
  - (b) prepare and submit to the CEO by 31 March 2025 and annually thereafter, an Annual Audit Compliance Report in the approved form.
- 29.** The licence holder must:
- (a) prepare an environmental report that provides information in accordance with Table 10 for the preceding two annual periods, and
  - (b) submit the environmental report to the CEO by 31 March 2025 and biennially thereafter.

**Table 10: Annual Environmental Report**

Condition	Requirement
N/A	A summary of any failure or malfunction of any pollution control equipment or any incidents that have occurred during the annual period and any action taken
Condition 21	<p>Details on waste monitoring of inputs and outputs across the annual period, including a summary of:</p> <ul style="list-style-type: none"> <li>(i) waste types and quantities (volume or tonnes) accepted onto the premises;</li> <li>(ii) wastes that were processed on the premises;</li> <li>(iii) wastes that were removed from the premises; and</li> <li>(iv) wastes that rejected from the premises in the reporting year.</li> </ul>
Condition 22	<p>Details on process monitoring of inputs and outputs across the annual period, including a summary of:</p> <ul style="list-style-type: none"> <li>(i) a description of the field methodologies employed;</li> <li>(ii) copies of the field monitoring documentation; and</li> <li>(iii) a tabulated summary of results.</li> </ul>
Condition 23	<p>A groundwater monitoring report demonstrating compliance with for the preceding annual period, and must include:</p> <ul style="list-style-type: none"> <li>(i) a clear statement of the scope of work carried out;</li> <li>(ii) a description of the field methodologies employed;</li> <li>(iii) a summary of the field and laboratory quality assurance / quality control (QA/QC) program;</li> <li>(iv) copies of the field monitoring reports and field QA/QC documentation;</li> <li>(v) an assessment of reliability of field procedures and laboratory results;</li> <li>(vi) a tabulated summary of results;</li> <li>(vii) a diagram with aerial imagery overlay showing all monitoring locations and depicting groundwater level contours, flow direction and hydraulic gradient;</li> <li>(viii) an interpretative summary and assessment of the results against relevant assessment levels for water, as published in the Guideline Assessment and Management of Contaminated Sites; and</li> <li>(ix) trend graphs to provide a graphical representation of historical results and to support the interpretive summary.</li> </ul>
Condition 26	a summary of any complaints received

## Definitions

In this licence, the terms in Table 11 have the meanings defined.

**Table 11: Definitions**

Term	Definition
ACN	Australian Company Number
Annual Audit Compliance Report (AACR)	means a report submitted in a format approved by the CEO (relevant guidelines and templates may be available on the Department's website).
annual period	a 12 month period commencing from 1 January until 31 December of the same year.
Asbestos	means the asbestiform variety of mineral silicates belonging to the serpentine or amphibole groups of rock-forming minerals and includes actinolite, amosite, anthophyllite, chrysotile, crocidolite, tremolite and any mixture containing 2 or more of those.
books	has the same meaning given to that term under the EP Act.
CEO	means Chief Executive Officer of the Department. "submit to / notify the CEO" (or similar), means either: Director General Department administering the <i>Environmental Protection Act 1986</i> Locked Bag 10 Joondalup DC WA 6919 or: <a href="mailto:info@dwer.wa.gov.au">info@dwer.wa.gov.au</a>
Clean Fill	as defined in the document titled <i>Landfill Waste Classification and Waste Definitions 1996</i> , as amended from time to time.
Department	means the department established under section 35 of the <i>Public Sector Management Act 1994</i> (WA) and designated as responsible for the administration of the EP Act, which includes Part V Division 3.
DFES	means the Department of Fire and Emergency Services.
discharge	has the same meaning given to that term under the EP Act.
emission	has the same meaning given to that term under the EP Act.
EP Act	<i>Environmental Protection Act 1986</i> (WA)
EP Regulations	<i>Environmental Protection Regulations 1987</i> (WA)
Greenwaste	means waste that originates from flora and which does not contain or has not been treated or coated with, preserving agents, biocides, fire retardants, paint, adhesives or binders.



<b>Term</b>	<b>Definition</b>
Inert waste	as defined in the document titled <i>Landfill Waste Classification and Waste Definitions 1996</i> , as amended from time to time.
Landfill definitions	means the document titled " <i>Landfill Waste Classification and Waste Definitions 1996</i> ".
licence	refers to this document, which evidences the grant of a licence by the CEO under section 57 of the EP Act, subject to the specified conditions contained within.
licence holder	refers to the occupier of the premises, being the person specified on the front of the licence as the person to whom this licence has been granted.
Municipal waste	means waste collected at the kerbside by the local authority collection vehicle or its contractor.
premises	refers to the premises to which this licence applies, as specified at the front of this licence and as shown on the premises maps in Schedule 1 to this licence.
prescribed premises	has the same meaning given to that term under the EP Act.
Putrescible waste	as defined in the document titled <i>Landfill Waste Classification and Waste Definitions 1996</i> , as amended from time to time.
Special waste	as defined in the document titled <i>Landfill Waste Classification and Waste Definitions 1996</i> , as amended from time to time.
waste	has the same meaning given to that term under the EP Act.

---

**END OF CONDITIONS**

### Schedule 1: Maps



Figure 1: Map of the boundary of the prescribed premises

L6911/1997/11

IR-T06 Licence template (v9.0) (November 2023)

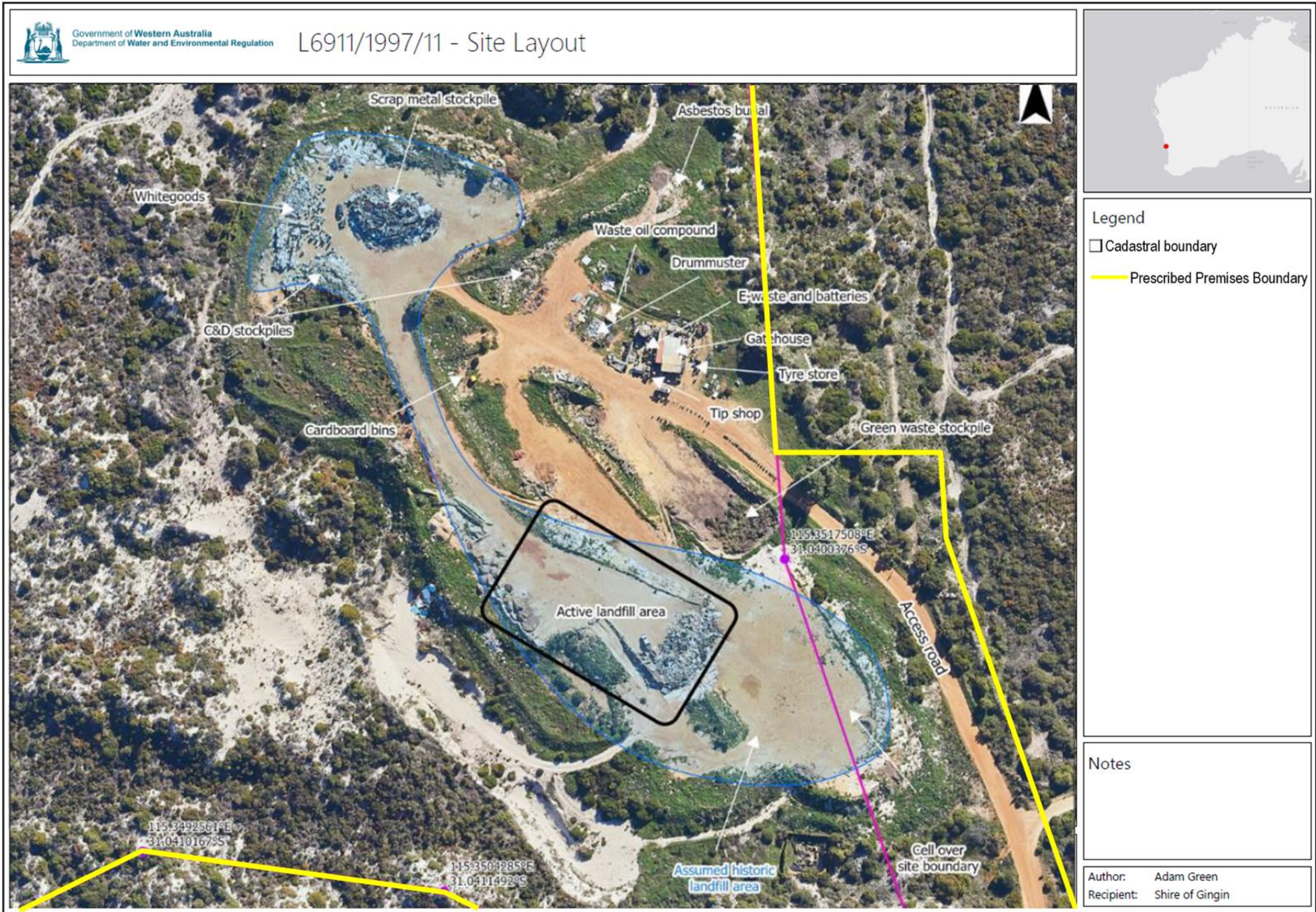


Figure 2: Site layout

L6911/1997/11

IR-T06 Licence template (v9.0) (November 2023)

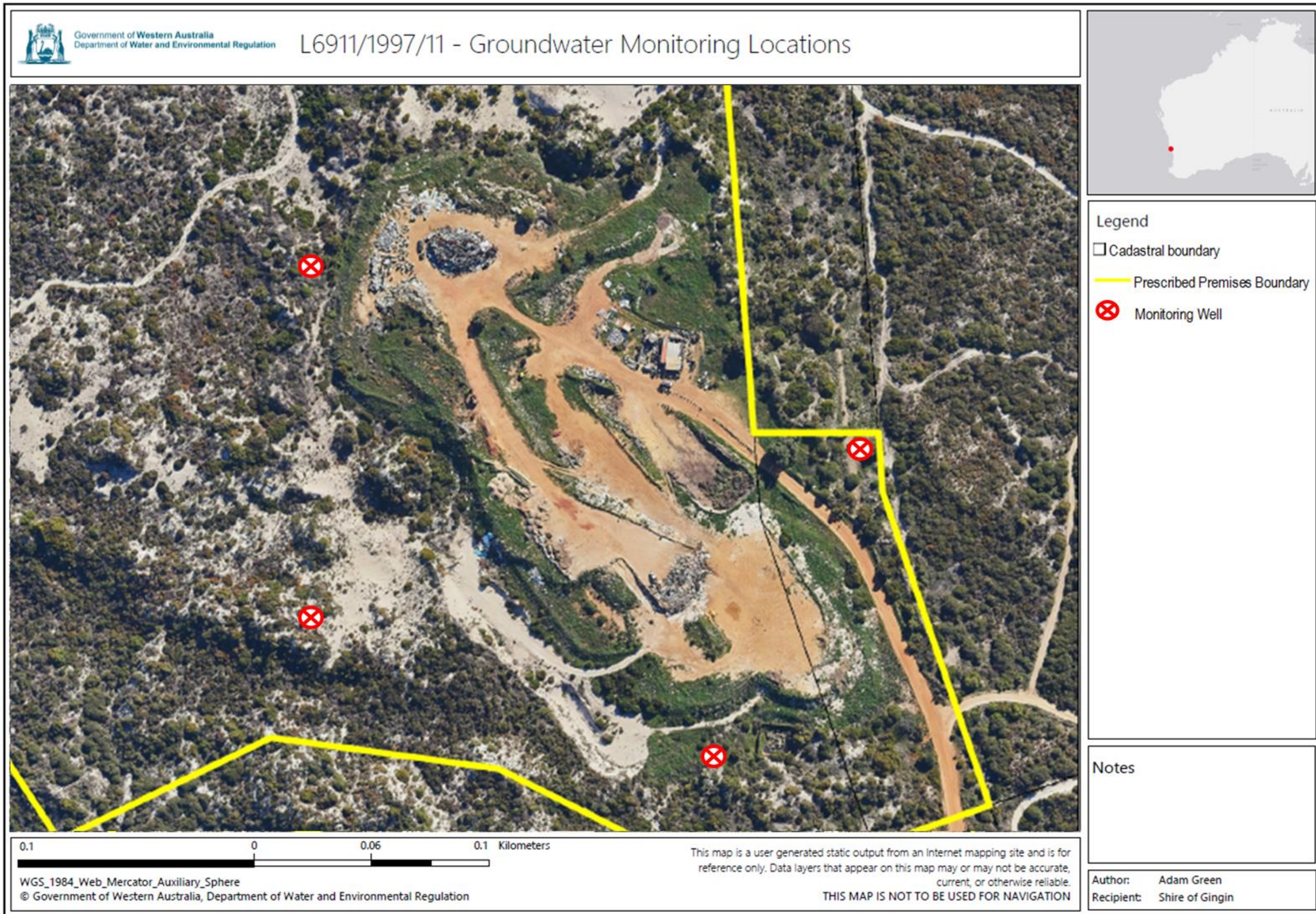


Figure 3: Groundwater monitoring well locations

L6911/1997/11

IR-T06 Licence template (v9.0) (November 2023)

## Schedule 2: Premises boundary

The corners of the premises boundary are the coordinates listed in Table 12.

**Table 12: Premises boundary coordinates (GDA2020)**

	<b>Easting</b>	<b>Northing</b>
1.	342134.64431	6565028.63667
2.	342680.48357	6565036.91736
3.	342699.63594	6564831.54015
4.	342760.08557	6564832.45108
5.	342816.92002	6564652.87559
6.	342760.37759	6564632.13828
7.	342783.54744	6564567.82944
8.	342577.81480	6564667.06308
9.	342466.88911	6564680.52132
10.	342364.51386	6564629.33977
11.	342264.64589	6564776.56543
12.	342137.23445	6564850.48285