



Works Approval

Works approval number	W6904/2024/1
Works approval holder	Siberia Mining Corporation Pty Ltd
ACN	097 650 194
Registered business address	Level 2, 1 Hood Street SUBIACO WA 6008
DWER file number	DER2024/000043
Duration	12/06/2024 to 12/06/2027
Date of issue	12/06/2024
Premises details	Siberia Gold Operations Ora Banda-Davyhurst Road ORA BANDA WA Mining tenement M24/960

Prescribed premises category description (Schedule 1, <i>Environmental Protection Regulations 1987</i>)	Assessed production / design capacity
Category 6: Mine dewatering	630,000 tonnes per annual period

This works approval is granted to the works approval holder, subject to the attached conditions, on 12 June 2024, by:

Lauren Edmands

**A/SENIOR MANAGER, RESOURCE INDUSTRIES
REGULATORY SERVICES**

an officer delegated under section 20 of the Environmental Protection Act 1986 (WA)

Works approval history

Date	Reference number	Summary of changes
12 June 2024	W6904/2024/1	Works approval granted for Category 6 dewatering activities

Interpretation

In this works approval:

- (a) the words 'including', 'includes' and 'include' in conditions mean "including but not limited to", and similar, as appropriate;
- (b) where any word or phrase is given a defined meaning, any other part of speech or other grammatical form of that word or phrase has a corresponding meaning;
- (c) where tables are used in a condition, each row in a table constitutes a separate condition;
- (d) any reference to an Australian or other standard, guideline, or code of practice in this works approval:
 - (i) if dated, refers to that particular version; and
 - (ii) if not dated, refers to the latest version and therefore may be subject to change over time;
- (e) unless specified otherwise, any reference to a section of an Act refers to that section of the EP Act; and
- (f) unless specified otherwise, all definitions are in accordance with the EP Act.

NOTE: This works approval requires specific conditions to be met but does not provide any implied authorisation for other emissions, discharges, or activities not specified in this works approval.

Works approval conditions

The works approval holder must ensure that the following conditions are complied with:

Construction phase

Infrastructure and equipment

1. The works approval holder must:
 - (a) construct and/or install the infrastructure;
 - (b) in accordance with the corresponding design and construction / installation requirements; and
 - (c) at the corresponding infrastructure location; and
 as set out in Table 1.

Table 1: Design and construction / installation requirements

Item	Infrastructure	Design and construction / installation requirements	Infrastructure location
1.	Dewatering pits (Palmerston, Bewick and Missouri)	<ul style="list-style-type: none"> • Installation of freeboard markers on the discharge pit ramps 	Pits as depicted in Schedule 1: Map, Figure 2.
2.	Dewatering pipelines, comprising high-density polyethylene (HDPE) pipeline to be installed from Sand King pit to Palmerston, Bewick and Missouri pit	<ul style="list-style-type: none"> • Flow meter must be installed to continuously measure the volume of water released to each discharge pit (Palmerston, Bewick and Missouri pits) • Pipeline must be installed within bunded road corridor. • Bunded pipeline trench to support spillway back into the adjacent pit(s). • Water carts must be available for dust suppression during construction / installation. 	Labelled as 'Mine dewater pipe', as depicted in Schedule 1: Map, Figure 2.
3.	Catch sump (between Sand King underground mine and Missouri Pit)	<ul style="list-style-type: none"> • Clay lined catch sump 10 m x 10 m x 1.5 m to be constructed adjacent to the main access run-of-mine (ROM) haul road. • Dust suppression using water carts undertaken during construction. 	Labelled as 'Catch sump', as depicted in Schedule 1: Map, Figure 2.

Compliance reporting

2. The works approval holder must within 30 calendar days of an item of infrastructure or equipment required by condition 1 being constructed and/or installed:
 - (a) undertake an audit of their compliance with the requirements of condition 1; and
 - (b) prepare and submit to the CEO an Environmental Compliance Report on that compliance.

3. The Environmental Compliance Report required by condition 2, must include as a minimum the following:
- certification by a suitably qualified professional that the items of infrastructure or component(s) thereof, as specified in condition 1, have been constructed in accordance with the relevant requirements specified in condition 1;
 - as constructed plans and a detailed site plan for each item of infrastructure or component of infrastructure specified in condition 1; and
 - be signed by a person authorised to represent the works approval holder and contains the printed name and position of that person.

Time limited operations phase

Commencement and duration

4. The works approval holder may only commence time limited operations for an item of infrastructure identified in condition 6 where the Environmental Compliance Report as required by condition 2 has been submitted by the works approval holder for that item of infrastructure.
5. The works approval holder may conduct time limited operations for an item of infrastructure specified in condition 6:
- for a period not exceeding 180 calendar days from the day the works approval holder meets the requirements of condition 2 for that item of infrastructure; or
 - until such time as a licence for that item of infrastructure is granted in accordance with Part V of the *Environmental Protection Act 1986*, if one is granted before the end of the period specified in condition 5(a).

Time limited operations requirements

6. During time limited operations, the works approval holder must ensure that the premises infrastructure listed in Table 2 and located at the corresponding infrastructure location is maintained and operated in accordance with the corresponding operational requirement set out in Table 2.

Table 2: Infrastructure requirements during time limited operations

Item	Infrastructure	Operational requirements	Infrastructure location
1.	Dewatering pits (Palmerston, Bewick and Missouri)	<ul style="list-style-type: none"> Maintain freeboard of at least 5 m below the natural pit crest level Monthly visual inspection of the surveyed freeboard line painted 5 m below the pit crest on the pit access ramp wall. Monthly survey of active dewatering pit surface water RL. 	Labelled as 'Palmerston pit', 'Bewick pit' and 'Missouri pit' as depicted in Schedule 1: Map, Figure 2.
2.	Siberia Mining gold project dewatering pipeline	Undertake visual inspection of active pipeline corridor at least once daily, when operating.	Labelled as 'Mine dewater pipe', as depicted in Schedule 1: Map, Figure 2.

Item	Infrastructure	Operational requirements	Infrastructure location
3.	Catch sump (between Sand King underground mine and Missouri Pit)	Catch sump to be clay lined and located adjacent to main ROM haul road	Labelled as 'Catch sump', as depicted in Schedule 1: Map, Figure 2.

7. During time limited operations, the works approval holder must ensure that the discharges listed in Table 3 are discharged from the corresponding points and only at the corresponding point location in accordance with the requirements set out in Table 3.

Table 3: Authorised discharge point during time limited operations

Discharge point reference	Discharge source and description	Discharge point location
Palmerston pit	Mine dewater from Sand King underground mine (via underground mine water sediment settlement sump).	Labelled as 'Palmerston pit', as depicted in Schedule 1: Map, Figure 2.
Bewick pit		Labelled as 'Bewick pit', as depicted in Schedule 1: Map, Figure 2.
Missouri pit		Labelled as 'Missouri pit', as depicted in Schedule 1: Map, Figure 2.

Monitoring during time limited operations

8. During time limited operation, the works approval holder must ensure that:
- all laboratory water samples are collected and preserved in accordance with AS/NZS 5667.1.
 - all laboratory samples are submitted to a laboratory with current NATA accreditation for the parameters to be measured; and
 - field samples will be tested at the discharge site for EC and pH.
9. During time limited operation, the works approval holder must ensure that:
- monitoring is undertaken in each monthly period such that there are at least 15 days in between the days on which samples are taken in successive months; and
 - monitoring is undertaken in each quarterly period such that there are at least 45 days in between the days on which samples are taken in successive quarters.
10. During time limited operation, the works approval holder must monitor discharges:
- at the corresponding discharge point;
 - for the corresponding parameter;
 - at the corresponding frequency;
 - for the corresponding averaging period;
 - in the corresponding unit, and
 - at the corresponding location,
- as set out in Table 4.

Table 4: Monitoring of dewater discharge during time limited operation

Discharge point	Monitoring location	Parameter	Unit	Averaging period	Frequency
Mine dewater pipeline discharge point at Palmerston, Bewick and Missouri pit(s)	Labelled as 'Monitoring/discharge points', as depicted in Schedule 1: Map Figure 2.	pH ¹	pH unit	Spot sample	Monthly during time limited operation ²
		Meter reading	m ³		
		Electrical conductivity ¹	µS/cm		
		Total dissolved solids (TDS)	mg/L	Quarterly during time limited operation ³	
		Total recoverable hydrocarbons (TRH)	mg/L		
		Dissolved metals and metalloids: <ul style="list-style-type: none"> • arsenic (As); • antimony (Sb); • cadmium (Cd); • chromium (total) (Cr); • cobalt (Co); • copper (Cu); • iron (Fe); • lead (Pb); • magnesium (Mg); • mercury (Hg); • molybdenum (Mo); • nickel (Ni); • selenium (Se); • thallium (Tl); and • zinc (Zn). 	mg/L		
		Major ions: <ul style="list-style-type: none"> • bicarbonate (HCO₃); • carbonate (CO₃ 2); • calcium (Ca); 	mg/L		Quarterly during time limited operation ³

Discharge point	Monitoring location	Parameter	Unit	Averaging period	Frequency
		<ul style="list-style-type: none"> • chloride (Cl); • nitrate (NO₃⁻); • potassium (K); • sodium (Na); and • sulfate (SO₄²⁻). 			

Note 1: In-field non-NATA-accredited analysis permitted.

Note 2: No monitoring is required if there is no discharge in that monthly period.

Note 3: No monitoring is required if there is no discharge in that quarterly period.

11. During time limited operation, the works approval holder must monitor discharge pit water quality:

- (a) at the corresponding discharge point;
 - (b) for the corresponding parameter;
 - (c) at the corresponding frequency;
 - (d) for the corresponding averaging period;
 - (e) in the corresponding unit, and
 - (f) at the corresponding location,
- as set out in Table 5.

Table 5: Monitoring of discharge pit water quality during time limited operations

Monitoring location	Parameter	Unit	Averaging period	Frequency	Location
Palmerston, Bewick and Missouri pit(s)	Standing water level (SWL)	mbgl	Spot sample	Monthly during time limited operation	Labelled as 'Palmerston, Bewick and Missouri pit(s)', as depicted in Schedule 1: Map Figure 2.
Sand King transfer tank sampling point	pH ¹	pH unit			Quarterly during time limited operation
	Electrical conductivity ¹	µS/cm			
	Total dissolved solids (TDS)	mg/L			
	Total recoverable hydrocarbons (TRH)	mg/L			

Monitoring location	Parameter	Unit	Averaging period	Frequency	Location
Sand King transfer tank sampling point	Dissolved metals and metalloids: <ul style="list-style-type: none"> • arsenic (As); • antimony (Sb); • cadmium (Cd); • chromium (total) (Cr); • cobalt (Co); • copper (Cu); • iron (Fe); • lead (Pb); • magnesium (Mg); • mercury (Hg); • molybdenum (Mo); • nickel (Ni); • selenium (Se); • thallium (Tl); and • zinc (Zn). 	mg/L	Spot sample	Quarterly during time limited operation Quarterly during time limited operation	Transfer tanks situated on the edge of the Sand King Pit Crest, within the Sand King 'controlled drainage area'. Labelled as 'Mine water tanks' as depicted in Schedule 1: Map Figure 1
	Major ions: <ul style="list-style-type: none"> • bicarbonate (HCO₃); • carbonate (CO₃²⁻); • calcium (Ca); • chloride (Cl); • nitrate (NO₃⁻); • potassium (K); • sodium (Na); and • sulfate (SO₄²⁻). 				

Note 1: In-field non-NATA-accredited analysis permitted.

Compliance reporting

12. The works approval holder must submit to the CEO a report on the time limited operations within 30 calendar days of the completion date of time limited operations.
13. The works approval holder must ensure the report required by condition 12 includes the following:
 - (a) a summary of the time limited operations, including timeframes and amount of mine dewater emitted / discharged to the environment;
 - (b) data from the monitoring required by conditions 10 and 11;
 - (c) a review of operational performance and compliance against condition 6;
 - (d) where the manufacturer's design specifications and/or the conditions of this works approval have not been met, what measures will the works approval holder take to meet them, and what timeframes will be required to implement those measures.

Records and reporting (general)

14. The works approval holder must record the following information in relation to complaints received by the works approval holder (whether received directly from a complainant or forwarded to them by the Department or another party) about any alleged emissions from the premises:
 - (a) the name and contact details of the complainant, (if provided);
 - (b) the time and date of the complaint;
 - (c) the complete details of the complaint and any other concerns or other issues raised; and
 - (d) the complete details and dates of any action taken by the works approval holder to investigate or respond to any complaint.
15. The works approval holder must maintain accurate and auditable books including the following records, information, reports, and data required by this works approval:
 - (a) the works conducted in accordance with condition 1;
 - (b) any maintenance of infrastructure that is performed in the course of complying with condition 6;
 - (c) monitoring programmes undertaken in accordance with conditions 10 and 11; and
 - (d) complaints received under condition 14.
16. The books specified under condition 15 must:
 - (a) be legible;
 - (b) if amended, be amended in such a way that the original version(s) and any subsequent amendments remain legible and are capable of retrieval;
 - (c) be retained by the works approval holder for the duration of the works approval; and
 - (d) be available to be produced to an inspector or the CEO as required.

Definitions

In this works approval, the terms in Table 6 have the meanings defined.

Table 6: Definitions

Term	Definition
annual period	a 12-month period commencing from the date of issue of this works approval until the same day and month of the immediately following year.
AS/NZS 5667.1	means Australian Standard <i>AS/NZS 5667.1:1998: Water quality - Sampling, Part 1: Guidance on the design of sampling programs, sampling techniques and the preservation and handling of samples</i>
books	has the same meaning given to that term under the EP Act.
CEO	means Chief Executive Officer. CEO for the purposes of notification means: Director General Department administering the <i>Environmental Protection Act 1986</i> Locked Bag 10 Joondalup DC WA 6919 info@dwer.wa.gov.au
Department	means the department established under section 35 of the <i>Public Sector Management Act 1994</i> and designated as responsible for the administration of Part V Division 3 of the EP Act.
discharge	has the same meaning given to that term under the EP Act.
emission	has the same meaning given to that term under the EP Act.
Environmental Compliance Report	means a report to satisfy the CEO that the conditioned infrastructure and/or equipment has been constructed and/or installed in accordance with the works approval.
EP Act	<i>Environmental Protection Act 1986 (WA)</i> .
EP Regulations	<i>Environmental Protection Regulations 1987 (WA)</i> .
HDPE	means high density poly-ethylene.
premises	the premises to which this licence applies, as specified at the front of this licence and as shown on the premises map (Figure 1) in Schedule 1 to this works approval.
prescribed premises	has the same meaning given to that term under the EP Act.
time limited operations	refers to the operation of the infrastructure and equipment identified under this works approval that is authorised for that purpose, subject to the relevant conditions.

Term	Definition
works approval	refers to this document, which evidences the grant of the works approval by the CEO under section 54 of the EP Act, subject to the conditions.
works approval holder	refers to the occupier of the premises being the person to whom this works approval has been granted, as specified at the front of this works approval.

END OF CONDITIONS

Schedule 1: Maps

Premises map

The boundary of the prescribed premises is shown in the map below (Figure 1).

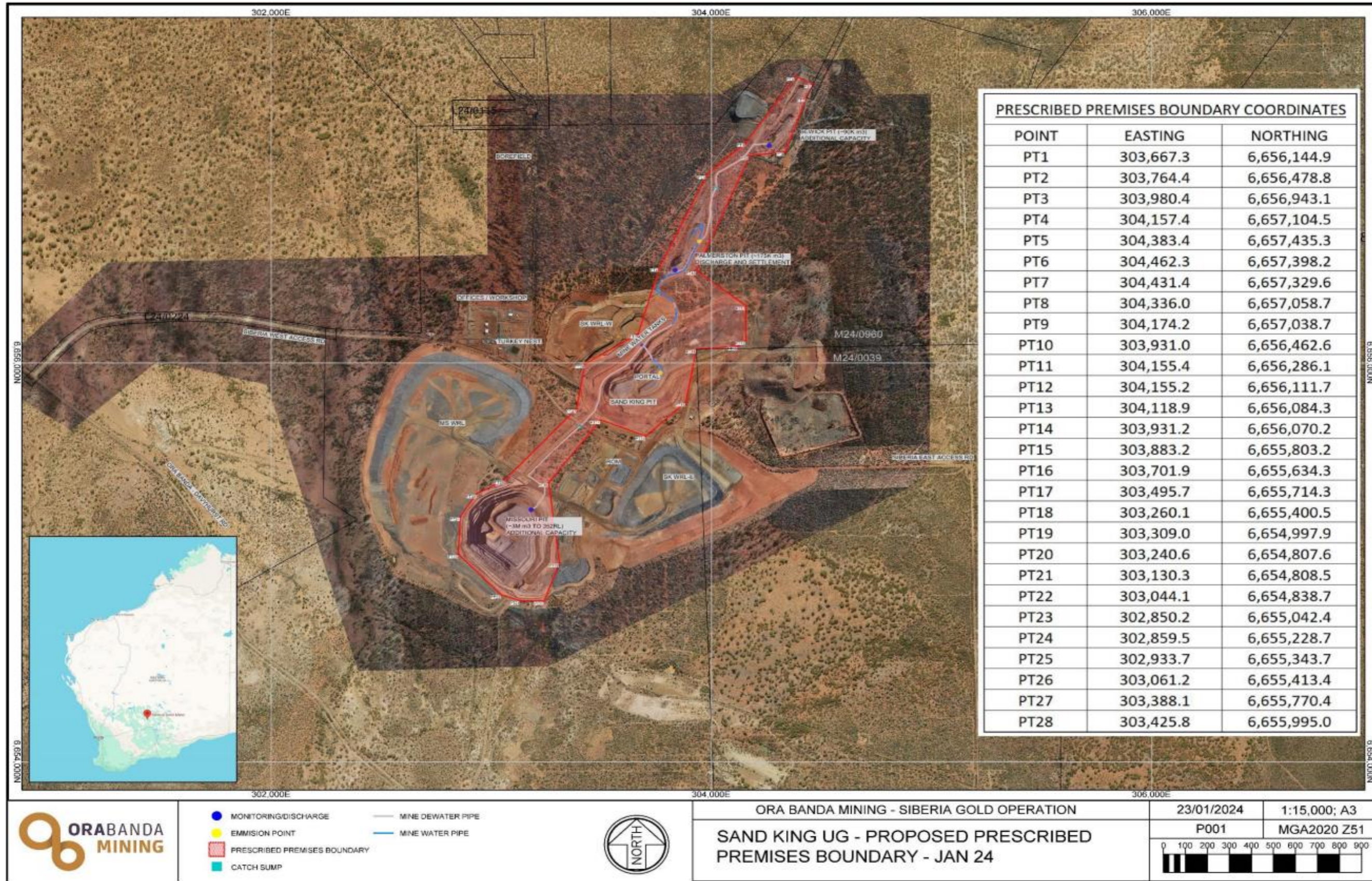


Figure 1: Map of the boundary of the prescribed premises

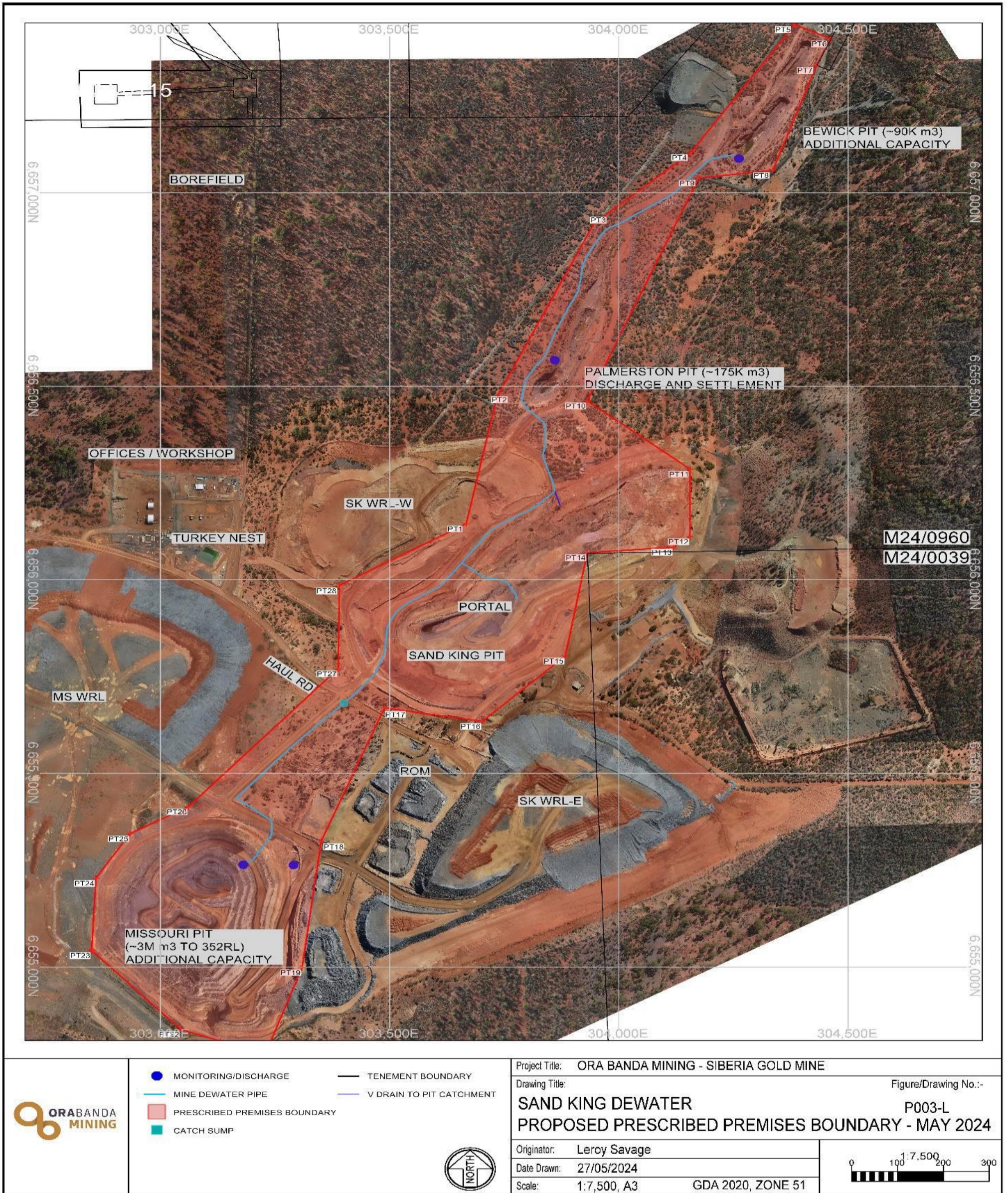


Figure 2: Siberia Gold Operations Category 6 mine dewatering pipeline infrastructure