



Works Approval

Works approval number W6729/2022/1

Works approval holder Wespine Industries Pty Ltd
ACN 052 954 337
Registered business address 241 Moore Road, Dardanup West WA 6236
DWER file number DER2022/000443

Duration 14/06/2024 to 13/06/2028

Date of issue 14 June 2024

Premises details Wespine
241 Moore Road, Dardanup West WA 6236
Lot 510 on Deposited Plan 411397
Certificate of Title Volume 2989 Folio 577
As depicted in Schedule 1

Prescribed premises category description (Schedule 1, <i>Environmental Protection Regulations 1987</i>)	Assessed production capacity
Category 29: Timber preserving: premises on which timber is preserved for commercial purposes by the use of chemicals.	More than 50,000 tonnes per annual period

This works approval is granted to the works approval holder, subject to the attached conditions, on 14 June 2024, by:

MANAGER, PROCESS INDUSTRIES

an officer delegated under section 20 of the *Environmental Protection Act 1986* (WA)

Interpretation

In this works approval:

- (a) the words 'including', 'includes' and 'include' in conditions mean "including but not limited to", and similar, as appropriate;
- (b) where any word or phrase is given a defined meaning, any other part of speech or other grammatical form of that word or phrase has a corresponding meaning;
- (c) where tables are used in a condition, each row in a table constitutes a separate condition;
- (d) any reference to an Australian or other standard, guideline, or code of practice in this works approval:
 - (i) if dated, refers to that particular version; and
 - (ii) if not dated, refers to the latest version and therefore may be subject to change over time;
- (e) unless specified otherwise, any reference to a section of an Act refers to that section of the EP Act; and
- (f) unless specified otherwise, all definitions are in accordance with the EP Act.

NOTE: This works approval requires specific conditions to be met but does not provide any implied authorisation for other emissions, discharges, or activities not specified in this works approval.

Works approval conditions

The works approval holder must ensure that the following conditions are complied with:

Construction phase

Infrastructure and equipment

1. The works approval holder must:
 - (a) construct and/or install the infrastructure and/or equipment;
 - (b) in accordance with the corresponding design and construction / installation requirements; and
 - (c) at the corresponding infrastructure location as set out in Table 1.

Table 1: Design and construction / installation requirements

	Infrastructure	Design and construction / installation requirements	Infrastructure location
1.	LOSP timber treatment facility storage shed	2,650m ² fully enclosed shed with bunded impervious concrete hardstand floor to house: <ol style="list-style-type: none"> (a) timber storage areas; (b) wrap and strapping line; (c) chemical treatment; (d) autoclave; (e) control room; (f) timber fixation area; and (g) working tank. 	Within LOSP timber treatment facility storage shed at the location depicted in Figure 1 and Figure 3.
	LOSP plant	Installation of: <ol style="list-style-type: none"> (a) 24,000L working tank; (b) 8,000L buffer tank; (c) skid mounted autoclave constructed from 6m x 2.1m 14mm H11 boilerplate; (d) compressor; (e) ancillary equipment including vacuum pump, two transfer pumps, a stripping pump, a hydraulic pump for locking and sealing the autoclave door, associated pipework all located within bunded area; (f) infeed/outfeed traverser system; (g) a PLC operating system; and (h) LOSP delivery pipeline constructed of double skinned steel, between the treatment storage tank and the working tank. Built in accordance with AS2843.1:2006 and AS2843.2:2006.	Within LOSP timber treatment facility storage shed at the location depicted in Figure 1 and Figure 3.

Infrastructure	Design and construction / installation requirements	Infrastructure location
Treatment Storage Tank	<ul style="list-style-type: none"> (a) 67,000L self-bunded treatment storage tank; (b) Level limits and a high-level alarm and cut off to prevent overfilling; and (c) Collection sump to contain the return of stormwater and/or spilt chemicals. 	Within LOSP timber treatment facility storage shed at the location depicted in Figure 1 and Figure 3
Bio-filtration channel and storm water surge dam	<ul style="list-style-type: none"> (a) 70m x 10m open dam with average depth of <3m; (b) Intercepts the flow of rainfall run-off from the LOSP Facility to the culvert; (c) Able to contain any pollutants during emergencies which result in failure of both the bund area and or the storage equipment at the LOSP treatment facility; (d) Able to slow the arrival of run-off from the Premises at the culvert under Moore Rd; and (e) Dam able to be closed off for containment and remediation of any spillage. 	Within LOSP timber treatment facility storage shed at the location depicted in Figure 4.

2. The works approval holder must design, construct, and install one new groundwater monitoring well in accordance with the requirements specified in Table 2.

Table 2: Groundwater monitoring well construction requirements

Infrastructure	Design, construction, and installation requirements	Infrastructure location	Timeframe
Groundwater monitoring well	<p><u>Well design and construction:</u></p> <ul style="list-style-type: none"> (a) Designed and constructed in accordance with ASTM D5092/D5092M-16: Standard practice for design and installation of groundwater monitoring bores; and (b) Well screens must target the part, or parts, of the aquifer most likely to be affected by contamination. Where temporary/seasonal perched features are present, wells must be nested, and the perched features individually screened. <p><u>Well construction log:</u></p> <ul style="list-style-type: none"> (c) Well construction details must be documented within a well construction log to demonstrate compliance with ASTM D5092/D5092M-16. The construction logs shall include elevations of the top of casing 	<p>To be determined by a suitably qualified geotechnical/hydrogeological consultant.</p> <p>Location selected must be suitably placed to detect potential emissions from the LOSP facility.</p>	Must be constructed, developed (purged) and determined to be operational no later than 30 calendar days prior to the commencement of time limited operations under condition 6

	<p>position to be used as the reference point for water-level measurements, and the elevations of the ground surface protective installations.</p> <p><u>Well development:</u></p> <p>(d) All installed monitoring wells must be developed after drilling to remove fine sand, silt, clay and any drilling mud residues from around the well screen to ensure the hydraulic functioning of the well. A detailed record should be kept of well development activities and included in the well construction log.</p> <p><u>Installation survey:</u></p> <p>(e) The vertical (top of casing) and horizontal position of each monitoring well must be surveyed and subsequently mapped by a suitably qualified surveyor.</p> <p><u>Well network map:</u></p> <p>(f) A well location map (using aerial image overlay) must be prepared and include the location of all monitoring wells in the monitoring network and their respective identification numbers.</p>		
--	--	--	--

Compliance reporting

3. The works approval holder must within 30 calendar days of an item of infrastructure or equipment required by condition 1 being constructed and/or installed:
 - (a) undertake an audit of their compliance with the requirements of condition 1; and
 - (b) prepare and submit to the CEO an Environmental Compliance Report on that compliance.
4. The Environmental Compliance Report required by condition 3, must include as a minimum the following:
 - (a) certification by a suitably qualified structural engineer that the items of infrastructure, as specified in Table 1, have been constructed in accordance with the relevant requirements specified in Table 1;
 - (b) as constructed plans and a detailed site plan for each item of infrastructure or component of infrastructure specified in condition 1; and
 - (c) be signed by a person authorised to represent the works approval holder and contains the printed name and position of that person.

Compliance reporting (monitoring well)

5. The works approval holder must, within 60 calendar days of the monitoring well being constructed as per the requirements of condition 4, submit to the CEO a well construction report that includes the following requirements:
 - (a) certification by a suitably qualified geotechnical/hydrogeological consultant that the groundwater monitoring well specified in condition 2 is suitably located to detect potential emissions from premises, including the LOSP facility;
 - (b) certification by a suitably qualified driller evidencing compliance with the design, construction and installation requirements of condition 2; and
 - (c) a well location map.

Time limited operations phase

Commencement and duration

6. The works approval holder may only commence time limited operations for an item of infrastructure identified in condition 1 where, the Environmental Compliance Report as required by condition 3 has been submitted by the works approval holder for that item of infrastructure.
7. The works approval holder may conduct time limited operations for an item of infrastructure specified in condition 1 (as applicable):
 - (a) for a period not exceeding 180 calendar days from the day the works approval holder meets the requirements of condition 6 for that item of infrastructure; or
 - (b) until such time as a licence for that item of infrastructure is granted in accordance with Part V of the *Environmental Protection Act 1986*, if one is granted before the end of the period specified in condition 7(a).

Time limited operations requirements and emission limits

8. During time limited operations, the works approval holder must ensure that the premises infrastructure and equipment listed in Table 2 and located at the corresponding infrastructure location is maintained and operated in accordance with the corresponding operational requirement set out in Table 2.

Table 2: Infrastructure and equipment requirements during time limited operations

Site infrastructure and equipment	Operational requirement	Infrastructure location
LOSP treatment facility	<ol style="list-style-type: none"> (a) Delivery and transfer of pre-mixed LOSP and from tanker truck directly to the chemical storage tank; (b) Any chemical released or collected stormwater in the bunded area must be pumped back to the working tank for reuse or loaded into drums for disposal at an appropriate waste facility; (c) All bunds and sumps to remain clean and free of debris or waste materials; (d) All waste material stored in bunded area until collected for disposal offsite at a licensed facility; 	Within LOSP timber treatment facility storage shed at the location depicted in Figure 3.

Site infrastructure and equipment	Operational requirement	Infrastructure location
	(e) Storage tank isolation valves must be locked if the treatment area is unattended; (f) The chemical storage tank must be fitted with a high-level alarm set at 95%; (g) LOSP chemical delivery and transfer pipelines must be fitted with an automatic leak detection system linked; (h) If treatment liquid is observed when timber exits the autoclave, the works approval holder must check all operational parameters are correct; (i) Treated timber must be stored for a minimum of 24 hours in the timber curing area within the timber storage shed post treatment; (j) Filling of the working tank must only be undertaken when the autoclave is not in use; (k) Residual preservative in the autoclave must be returned to the working tank prior to removing timber; (l) The autoclave must be fitted with a LOSP high-level alarm set at 95% with automatic shutdown of chemical delivery if triggered; and (m) The working tank must be fitted with a high-level sensor and alarm set at 95%.	

Monitoring during time limited operations

9. The works approval holder must monitor emissions during time limited operations in accordance with Table 4.

Table 4: Emissions and discharge monitoring during time limited operations

Monitoring location	Parameter	Unit	Frequency	Averaging Period	Method
B4 ¹	pH ² BOD ₅ Copper Chromium (III) Chromium (VI) Arsenic Total Dissolved Solids Phenols TPH	- mg/L mg/L mg/L mg/L mg/L mg/L mg/L mg/L	Quarterly ³	Spot Sample	AS/NZS 5667.1 and AS/NZS 5667.11

Note 1: Nominal ID name. Location of monitoring well to be determined in accordance with condition 2. Upon construction, this monitoring well is to be monitored as per the requirements of this table.

Note 2: In-field non-NATA accredited analysis permitted.

Note 3: Quarterly monitoring to be undertaken at least 45 calendar days apart.

10. The works approval holder must record the results of all monitoring activity required by condition 9.

Emissions

11. The works approval holder shall immediately recover, or remove and dispose of, spills of environmentally hazardous materials including fuel, oil, or other hydrocarbons, whether inside or outside an engineered containment system.
12. The works approval holder shall ensure that all material used for the recovery, removal, and/or disposal of environmentally hazardous materials is stored in an impermeable container prior to disposal at an appropriately authorised facility.
13. The works approval holder must take all reasonable and practicable measures to prevent stormwater run-off becoming contaminated by the activities and operations undertaken at the premises.

Compliance reporting

14. The works approval holder must submit to the CEO a report on the time limited operations within 30 calendar days of the completion date of time limited operations or 30 calendar days before the expiration date of the works approval, whichever is the sooner.
15. The works approval holder must ensure the report required by condition 14 includes the following:
 - (a) a summary of the time limited operations, including timeframes and amount of timber processed;
 - (b) a summary of monitoring results obtained during time limited operations under condition 9; and
 - (c) where the manufacturer's design specifications and the conditions of this works approval have not been met, what measures will the works approval holder take to meet them, and what timeframes will be required to implement those measures.

Records and reporting (general)

16. The works approval holder must record the following information in relation to complaints received by the works approval holder (whether received directly from a complainant or forwarded to them by the Department or another party) about any alleged emissions from the premises:
 - (a) the name and contact details of the complainant, (if provided);
 - (b) the time and date of the complaint;
 - (c) the complete details of the complaint and any other concerns or other issues raised; and
 - (d) the complete details and dates of any action taken by the works approval holder to investigate or respond to any complaint.
17. The works approval holder must maintain accurate and auditable books including the following records, information, reports, and data required by this works approval:
 - (a) the works conducted in accordance with condition 1;

- (b) any maintenance of infrastructure that is performed in the course of complying with condition 8;
- (c) monitoring programmes undertaken in accordance with condition 9; and
- (d) complaints received under condition 16.

18. The books specified under condition 17 must:

- (a) be legible;
- (b) if amended, be amended in such a way that the original version(s) and any subsequent amendments remain legible and are capable of retrieval;
- (c) be retained by the works approval holder for the duration of the works approval; and
- (d) be available to be produced to an inspector or the CEO as required.

Definitions

In this works approval, the terms in Table 5 have the meanings defined.

Table 5: Definitions

Term	Definition
annual period	a 12 month period commencing from 1 January until 31 December of the immediately following year.
AS/NZS 2843.1	means the Australian and New Zealand Standard <i>AS/NZS 2843.1 Timber preservation plants Part 1: Timber preservation plant site design</i>
AS/NZS 2843.2	means the Australian and New Zealand Standard <i>AS/NZS 2843.2 Timber preservation plant safety code Part 2: Plant operation</i>
AS/NZS 5667.1	means the Australian and New Zealand Standard <i>AS/NZS 5667.1 Water Quality – Sampling</i>
AS/NZS 5667.11	means the Australian and New Zealand Standard <i>AS/NZS 5667.11 Water quality - sampling - guidance on sampling groundwater.</i>
ASTM D5092/D5092M-16	means the ASTM international standard for <i>Standard practice for design and installation of groundwater monitoring wells (Designation: ASTM D5092/D5092M-16)</i>
BOD ₅	means 5 Day Biochemical Oxygen Demand
books	has the same meaning given to that term under the EP Act.
CEO	means Chief Executive Officer. CEO for the purposes of notification means: Director General Department administering the <i>Environmental Protection Act 1986</i> Locked Bag 10 Joondalup DC WA 6919 info@dwer.wa.gov.au
condition	a condition to which this works approval is subject under section 62 of the EP Act.
Department	means the department established under section 35 of the <i>Public Sector Management Act 1994</i> and designated as responsible for the administration of Part V Division 3 of the EP Act.
discharge	has the same meaning given to that term under the EP Act.
emission	has the same meaning given to that term under the EP Act.
Environmental Compliance Report	means a report to satisfy the CEO that the conditioned infrastructure and/or equipment has been constructed and/or installed in accordance with the works approval.

Term	Definition
EP Act	<i>Environmental Protection Act 1986 (WA).</i>
EP Regulations	<i>Environmental Protection Regulations 1987 (WA).</i>
LOSP	means Light Organic Solvent Preservative
PLC	means Programmable Logic Controller
premises	refers to the premises to which this licence applies, as specified at the front of this licence and as shown on the premises map (Figure 1) in Schedule 1 to this licence.
prescribed premises	has the same meaning given to that term under the EP Act.
suitably qualified geotechnical/hydrogeological consultant	means a person who: <ul style="list-style-type: none"> a) holds relevant qualifications in hydrogeology, environmental science, hydrology, geology, geotechnical engineering or similar; and b) has a minimum of 5 years of experience working in the area of geotechnical or environmental monitoring, groundwater investigations, site contamination assessments, or monitoring well installation.
suitably qualified driller	means a driller who possesses the appropriate experience and holds a Class 1 licence as per the Drillers' Classification System outlined in Minimum Construction Requirements for Water Bores in Australia (AIH 2012).
suitably qualified structural engineer	means a person who: <ul style="list-style-type: none"> a) holds a Bachelor of Engineering recognised by the Institute of Engineers; and b) has a minimum of 5 years of experience working in the area of structural engineering
time limited operations	refers to the operation of the infrastructure and equipment identified under this works approval that is authorised for that purpose, subject to the relevant conditions.
TPH	means Total Petroleum Hydrocarbons.
works approval	refers to this document, which evidences the grant of the works approval by the CEO under section 54 of the EP Act, subject to the conditions.
works approval holder	refers to the occupier of the premises being the person to whom this works approval has been granted, as specified at the front of this works approval.

END OF CONDITIONS

Schedule 1: Maps

Premises map

The boundary of the prescribed premises is shown in the map below (Figure 1)

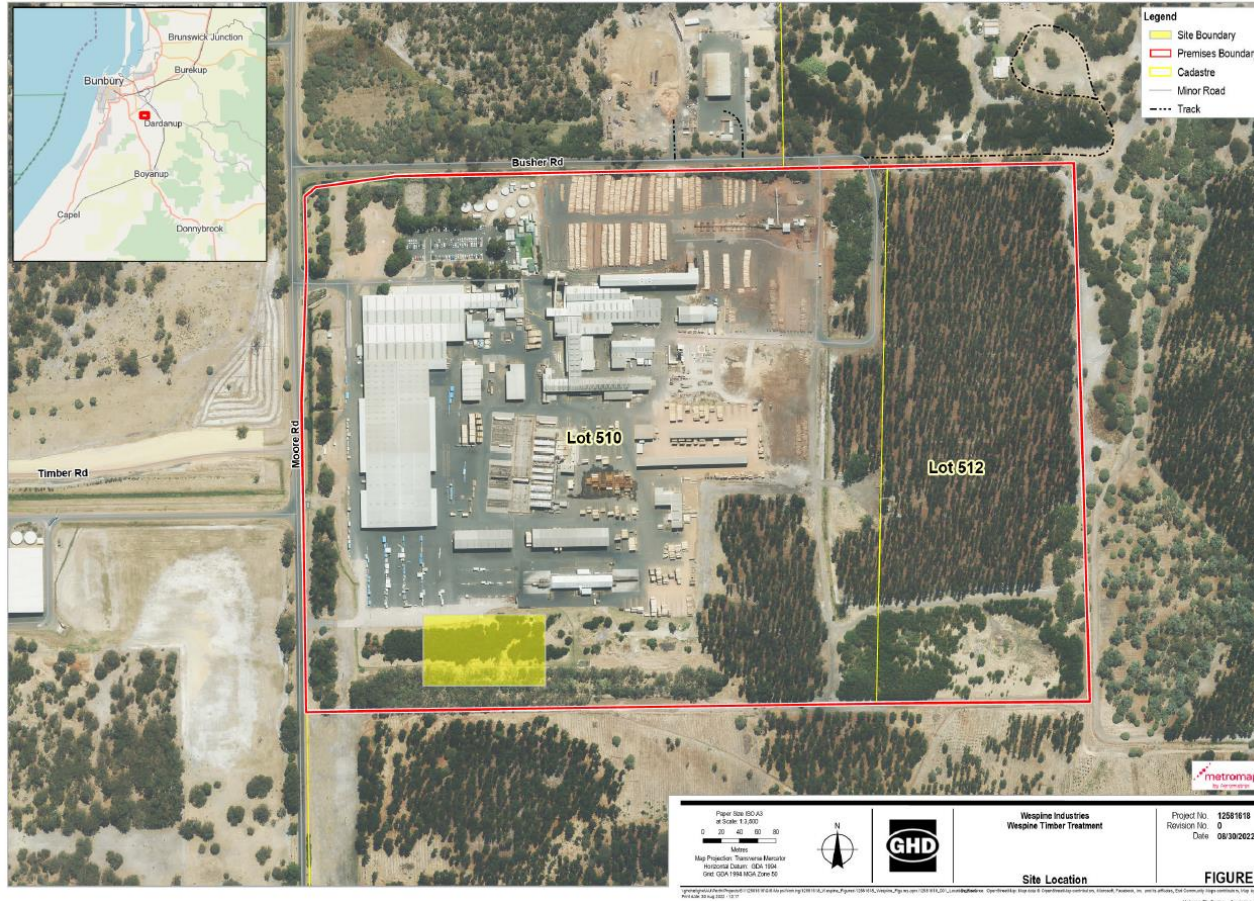


Figure 1: Map of the boundary of the prescribed premises with the location of the LOSP facility shown in yellow

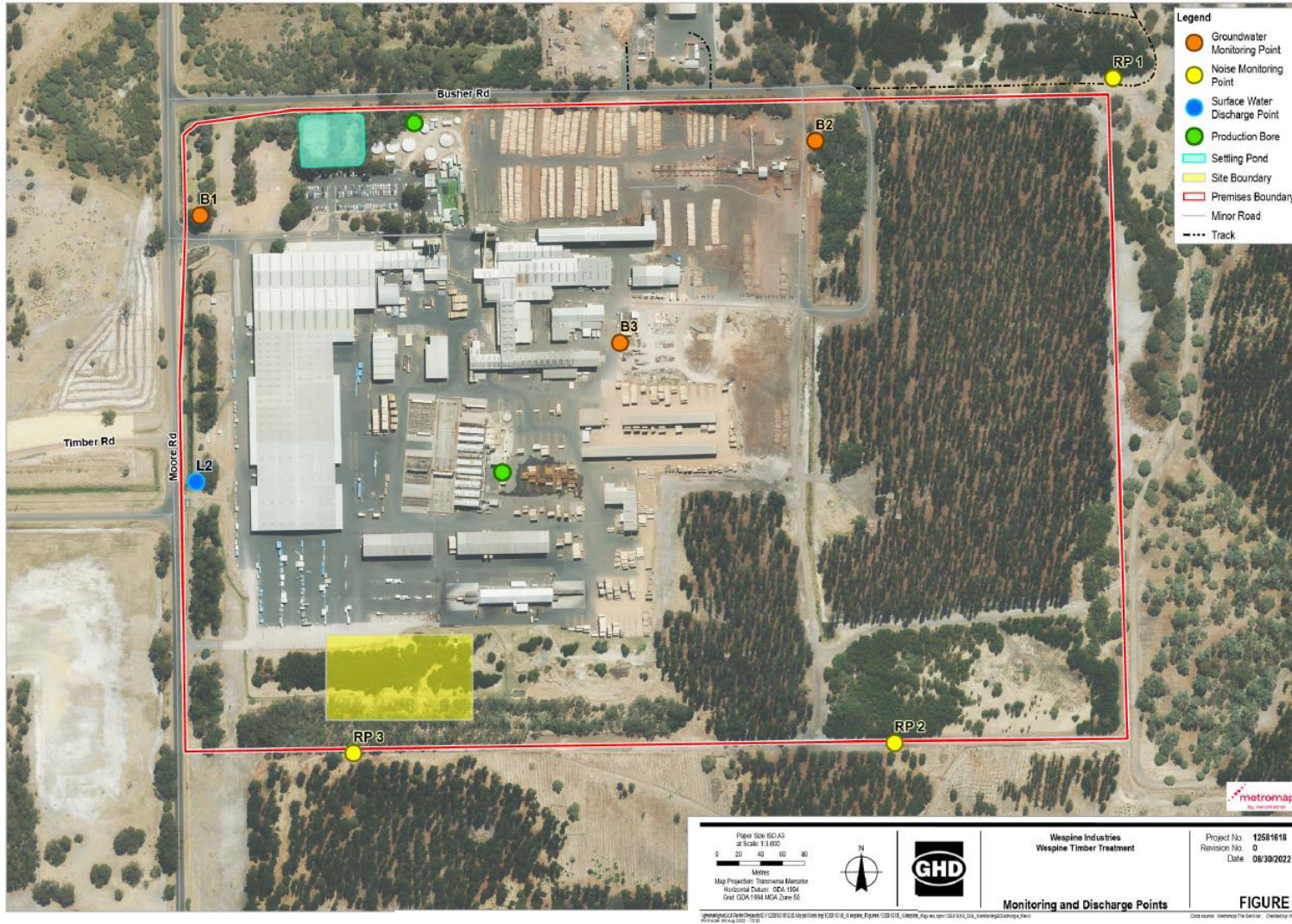


Figure 1: Map of monitoring and discharge points

W6729/2022/1
 IR-T05 Works approval template (v6.0) (September 2022)

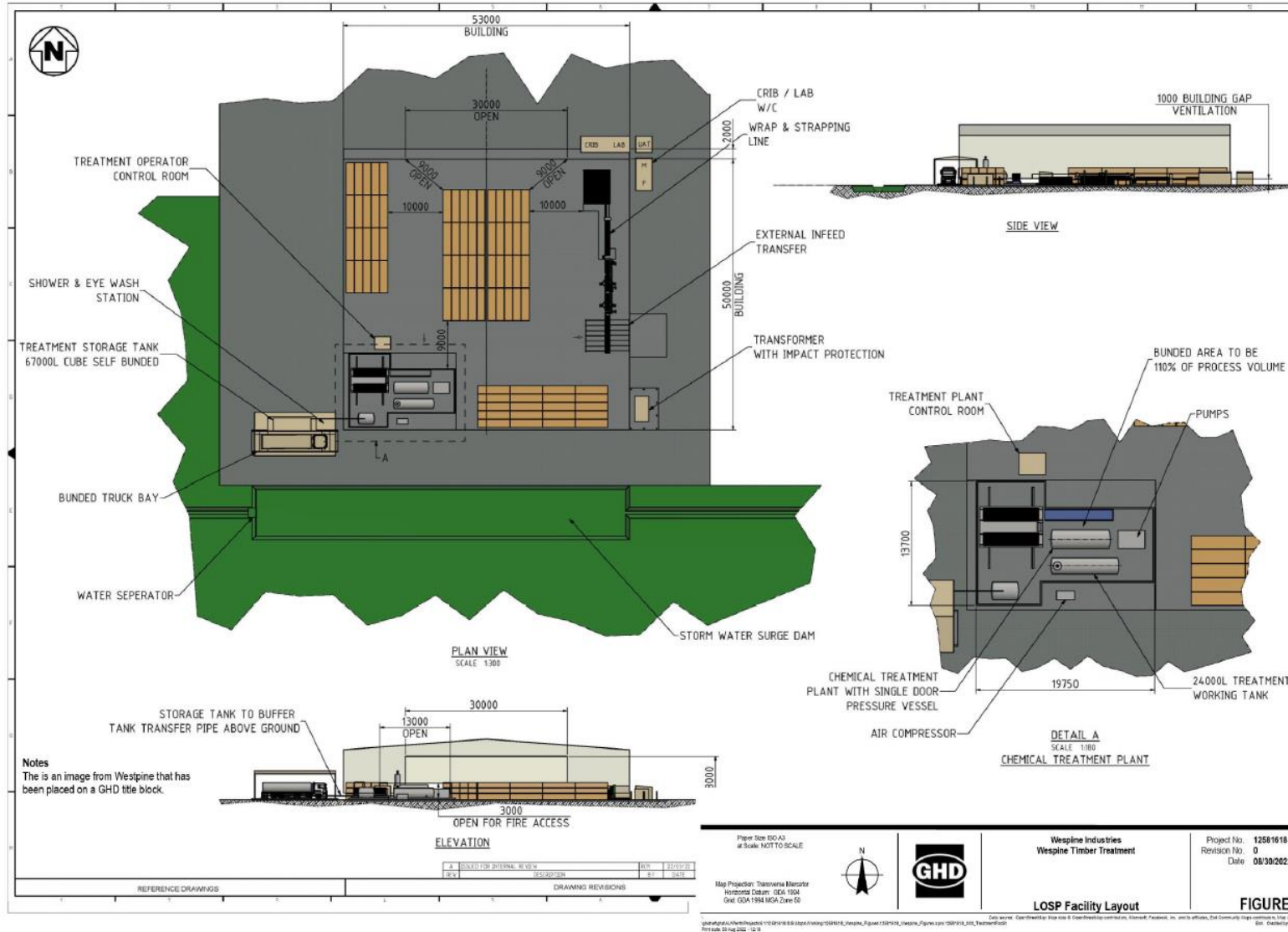


Figure 3: LOSP facility layout

W6729/2022/1

IR-T05 Works approval template (v6.0) (September 2022)

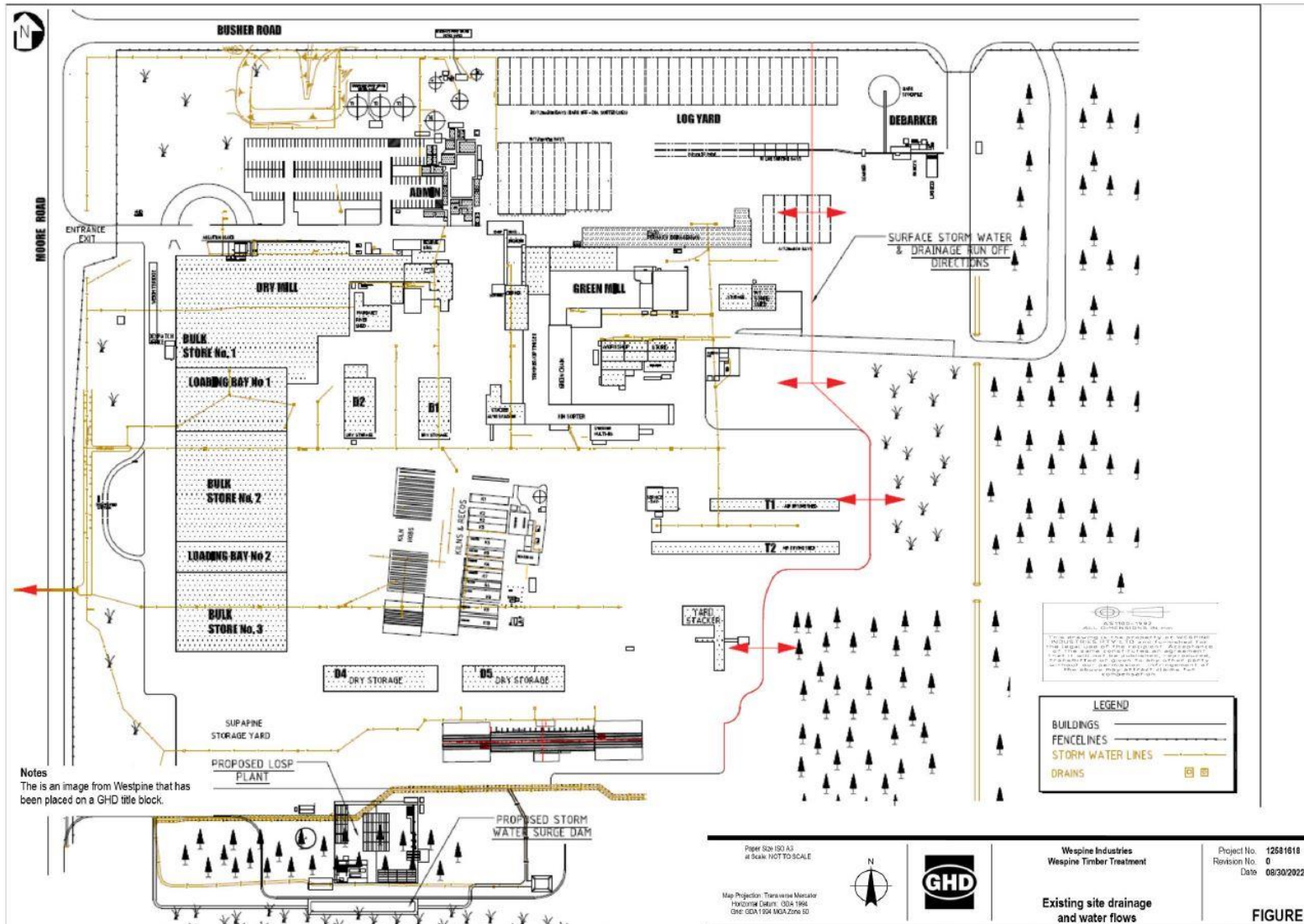


Figure 4: LOSP facility drainage and proposed surge dam

W6729/2022/1
IR-T05 Works approval template (v6.0) (September 2022)