



Works Approval

Works approval number	W6836/2023/1
Works approval holder	Gold Valley Wiluna West Pty Ltd
ACN	673 280 530
Registered business address	10 Kings Park Road WEST PERTH WA 6005
DWER file number	DER2023/000517
Duration	19/02/2024 to 19/02/2027
Date of issue	19/02/2024
Date of amendment	29 July 2024
Premises details	Wiluna West Project Sandstone-Wiluna Road, WILUNA Legal description - Within part of mining tenement M53/1087 As defined by the premises map in Schedule 1 and coordinates in Schedule 2

Prescribed premises category description (Schedule 1, <i>Environmental Protection Regulations 1987</i>)	Assessed production / design capacity
Category 5: Processing or beneficiation of metallic or non-metallic ore	2,000,000 tonnes per year

This works approval is granted to the works approval holder, subject to the attached conditions, on 29 July 2024, by:

Timothy Moran
**MANAGER, RESOURCE INDUSTRIES
INDUSTRY REGULATION**
an officer delegated under section 20 of the *Environmental Protection Act 1986 (WA)*

Works approval history

Date	Reference number	Summary of changes
19/02/2024	W6836/2023/1	Works approval granted for the construction, commissioning, and time limited operations of the C3, three-stage crushing and screening plant.
29/07/2024	W6836/2023/1	Works approval transferred to Gold Valley Wiluna West Pty Ltd.

Interpretation

In this works approval:

- (a) the words 'including', 'includes' and 'include' in conditions mean "including but not limited to", and similar, as appropriate;
- (b) where any word or phrase is given a defined meaning, any other part of speech or other grammatical form of that word or phrase has a corresponding meaning;
- (c) where tables are used in a condition, each row in a table constitutes a separate condition;
- (d) any reference to an Australian or other standard, guideline, or code of practice in this works approval:
 - (i) if dated, refers to that particular version; and
 - (ii) if not dated, refers to the latest version and therefore may be subject to change over time;
- (e) unless specified otherwise, any reference to a section of an Act refers to that section of the EP Act; and
- (f) unless specified otherwise, all definitions are in accordance with the EP Act.

NOTE: This works approval requires specific conditions to be met but does not provide any implied authorisation for other emissions, discharges, or activities not specified in this works approval.

Works approval conditions

The works approval holder must ensure that the following conditions are complied with:

Construction phase

Infrastructure and equipment

1. The works approval holder must:
 - (a) construct and/or install the infrastructure and/or equipment;
 - (b) in accordance with the corresponding design and construction / installation requirements; and
 - (c) at the corresponding infrastructure location as set out in Table 1.

Table 1: Design and construction / installation requirements

	Infrastructure	Design and construction / installation requirements	Infrastructure location
1.	Crushing and screening plant and associated infrastructure (ROM pad and stockyard area)	<ol style="list-style-type: none"> 1) Crushing and screening plant layout to be in accordance with Figure 2, Schedule 1. 2) The crushing and screening plant to consist of the following: <ul style="list-style-type: none"> ▪ Primary crusher; ▪ Secondary crusher trailer and hopper/feeder; ▪ Screening trailer and hopper/feeder; ▪ Lump stacker; and ▪ Fines stacker 3) Dust suppression sprays to be installed on the ROM feed hopper, transfer points and on the product stockpiles. 4) Plant area, ROM and stockyard area to be graded to ensure stormwater runoff is directed to a stormwater sump. 5) Bunds to be constructed to divert surface water flows around the plant, ROM and stockyard area. 	As depicted in Figure 1 of Schedule 1.
2.	Hydrocarbon / chemical storage areas	<ol style="list-style-type: none"> 1) Hydrocarbon and chemical storage areas to be bunded with a containment capacity equivalent to 110% capacity of any tank or 25% of the total capacity of an interlinked system. 	Labelled as "C3 Fuel storage" as depicted in Figure 1 of Schedule 1.
3.	Turkeys nest dam	<ol style="list-style-type: none"> 1) Dam to be constructed with compacted oxide or clay material, lined with 1.0mm HDPE liner. 2) Dam to be designed to contain a 1-in-100-year 72 hours ARI rainfall event. 	As depicted in Figure 1 Schedule 1

Compliance reporting

2. The works approval holder must within 30 calendar days of an item of infrastructure or equipment required by condition 1 being constructed and/or installed:
 - (a) undertake an audit of their compliance with the requirements of condition 1; and

- (b) prepare and submit to the CEO an Environmental Compliance Report on that compliance.
- 3. The Environmental Compliance Report required by condition 2, must include as a minimum the following:
 - (a) certification by a suitably qualified and experienced engineer that the items of infrastructure or component(s) thereof, as specified in condition 1, have been constructed in accordance with the relevant requirements specified in condition 1;
 - (b) as constructed plans or photographs and a detailed site plan for each item of infrastructure or component of infrastructure specified in condition 1; and
 - (c) be signed by a person authorised to represent the works approval holder and contains the printed name and position of that person.

Environmental commissioning phase

Environmental commissioning requirements and emission limits

- 4. The works approval holder may only commence environmental commissioning of an item of infrastructure listed in condition 5 once the Environmental Compliance Report has been submitted for that item of infrastructure in accordance with condition 2 of this works approval.
- 5. The works approval holder must ensure that any environmental commissioning activities undertaken for an item of infrastructure specified in Table 2 are carried out:
 - (a) in accordance with the corresponding commissioning requirements; and
 - (b) for the corresponding authorised commissioning duration of Table 2.

Table 2: Environmental commissioning requirements

Infrastructure	Commissioning requirements	Authorised commissioning duration
Crushing and screening plant and associated infrastructure (ROM pad and stockyard area))	<ul style="list-style-type: none"> 1) Infrastructure to be tested to ensure all components are working in accordance with manufacturers specifications. 2) Dust suppression sprays to be tested to ensure functionality. 3) Stormwater to be managed so contaminated or potentially contaminated stormwater is captured to prevent release into the environment. 4) Visual monitoring of airborne dust levels and efficacy of dust suppression measures to occur on a daily basis. 	For a period not exceeding 28 days.

Environmental Commissioning Reporting

- 6. The works approval holder must submit to the CEO an Environmental Commissioning Report within 30 calendar days of the completion date of environmental commissioning for each item of infrastructure specified in Table 2.
- 7. The works approval holder must ensure the Environmental Commissioning Report required by condition 6 of this works approval includes the following:
 - (a) a summary of the environmental performance of each item of infrastructure or

equipment as constructed or installed, which at minimum includes records detailing the:

- (i) environmental commissioning of the crushing and screening plant; and
 - (ii) testing the dust suppression system.
- (b) a review of the works approval holder's performance and compliance against the conditions of this works approval; and
- (c) where they have not been met, measures proposed to meet the manufacturer's design specifications and the conditions of this works approval, together with timeframes for implementing the proposed measures.

Time limited operations phase

Commencement and duration

8. The works approval holder may only commence time limited operations for an item of infrastructure identified in condition 10:
- (a) where the item of infrastructure is not authorised to undertake environmental commissioning, the Environmental Compliance Report as required by condition 2 has been submitted by the works approval holder for that item of infrastructure; and
 - (b) where the item of infrastructure is authorised to undertake environmental commissioning under condition 5, the Environmental Commissioning Report for that item of infrastructure as required by condition 6 has been submitted by the works approval holder.
9. The works approval holder may only conduct time limited operations for an item of infrastructure specified in condition 10:
- (a) for a period not exceeding 180 calendar days from the day the works approval holder meets the requirements of condition 8 for that item of infrastructure; or
 - (b) until such time as a licence for that item of infrastructure is granted in accordance with Part V of the *Environmental Protection Act 1986* whichever is sooner.

Time limited operations requirements

10. During time limited operations, the works approval holder must ensure that the premises infrastructure and equipment listed in Table 3 and located at the corresponding infrastructure location is maintained and operated in accordance with the corresponding operational requirement set out in Table 3.

Table 3: Infrastructure and equipment requirements during time-limited operations

Item	Site infrastructure and equipment	Operational requirements	Infrastructure location
1.	Crushing and screening plant and associated infrastructure (ROM pad and stockyard area)	<ol style="list-style-type: none"> 1) Dust suppression sprays must be operated at the ROM feed hopper, transfer points and on the product stockpiles to minimize dust generation. 2) Ore is to be wetted down prior to crushing to minimise dust. 3) Visual monitoring of airborne dust levels and efficacy of dust suppression measures to occur on a daily basis. 4) Volumes of ore processed through the crushing and screening plant to be recorded. 5) Water cart with water cannon to be available at all times to manage dust emissions. 6) Bunds, sumps, and hardstand are to be maintained. 7) Potentially contaminated stormwater to be captured and prevented from being released in the environment. 8) Stormwater sump to be inspected on a weekly basis and following significant rainfall events and pumped out to remove excess sediment to prevent overflowing of contaminated stormwater. 	As depicted in Figure 1 of Schedule 1.
2.	Chemical and hydrocarbon storage areas	<ol style="list-style-type: none"> 1) Ensure bunded hydrocarbon and chemical storage areas are maintained through regular inspections. 2) Bulk fuel storage to be placed within self-contained, double-skinned storage tanks. 	Labelled as "C3 Fuel storage" as depicted in Figure 1 of Schedule 1.

Compliance reporting

11. The works approval holder must submit to the CEO a report on the time limited operations within 30 calendar days of the completion date of time limited operations or 90 calendar days before the expiration date of the works approval, whichever is the sooner.
12. The works approval holder must ensure the report required by condition 11 includes the following:
 - (a) a summary of the time limited operations, including timeframes and amount of iron ore processed;
 - (b) a summary of the environmental performance of all infrastructure as constructed or installed (as applicable).

- (c) a review of performance and compliance against the conditions of the works approval and the Environmental Commissioning Report; and
- (d) where the manufacturer's design specifications and the conditions of this works approval have not been met, what measures will the works approval holder take to meet them, and what timeframes will be required to implement those measures.

Records and reporting (general)

- 13.** The works approval holder must record the following information in relation to complaints received by the works approval holder (whether received directly from a complainant or forwarded to them by the Department or another party) about any alleged emissions from the premises:
- (a) the name and contact details of the complainant, (if provided);
 - (b) the time and date of the complaint;
 - (c) the complete details of the complaint and any other concerns or other issues raised; and
 - (d) the complete details and dates of any action taken by the works approval holder to investigate or respond to any complaint.
- 14.** The works approval holder must maintain accurate and auditable books including the following records, information, reports, and data required by this works approval:
- (a) the works conducted in accordance with condition 1;
 - (b) any maintenance of infrastructure that is performed in the course of complying with condition 10; and
 - (c) complaints received under condition 13.
- 15.** The books specified under condition 14 must:
- (a) be legible;
 - (b) if amended, be amended in such a way that the original version(s) and any subsequent amendments remain legible and are capable of retrieval;
 - (c) be retained by the works approval holder for the duration of the works approval; and
 - (d) be available to be produced to an inspector or the CEO as required.

Definitions

In this works approval, the terms in Table 4 have the meanings defined.

Table 4: Definitions

Term	Definition
annual period	a 12 month period commencing from 1 January until 31 December of the immediately following year.
ARI	Average Recurrence Interval
books	has the same meaning given to that term under the EP Act.
CEO	means Chief Executive Officer. CEO for the purposes of notification means: Director General Department administering the <i>Environmental Protection Act 1986</i> Locked Bag 10 Joondalup DC WA 6919 info@dwer.wa.gov.au
Department	means the department established under section 35 of the <i>Public Sector Management Act 1994</i> and designated as responsible for the administration of Part V Division 3 of the EP Act.
discharge	has the same meaning given to that term under the EP Act.
emission	has the same meaning given to that term under the EP Act.
environmental commissioning	means the sequence of activities to be undertaken to test equipment integrity and operation, or to determine the environmental performance, of equipment and infrastructure to establish or test a steady state operation and confirm design specifications.
Environmental Commissioning Report	means a report on any commissioning activities that have taken place and a demonstration that they have concluded, with focus on emissions and discharges, waste containment, and other environmental factors.
Environmental Compliance Report	means a report to satisfy the CEO that the conditioned infrastructure and/or equipment has been constructed and/or installed in accordance with the works approval.
EP Act	<i>Environmental Protection Act 1986 (WA)</i> .
EP Regulations	<i>Environmental Protection Regulations 1987 (WA)</i> .
HDPE	High Density Polyethylene
premises	the premises to which this licence applies, as specified at the front of this licence and as shown on the premises map (Figure 1)

Term	Definition
	in Schedule 1 to this works approval.
prescribed premises	has the same meaning given to that term under the EP Act.
ROM	Run of Mine
time limited operations	refers to the operation of the infrastructure and equipment identified under this works approval that is authorised for that purpose, subject to the relevant conditions.
works approval	refers to this document, which evidences the grant of the works approval by the CEO under section 54 of the EP Act, subject to the conditions.
works approval holder	refers to the occupier of the premises being the person to whom this works approval has been granted, as specified at the front of this works approval.

END OF CONDITIONS

Schedule 1: Maps

Premises map

The boundary of the prescribed premises is shown in the map below (Figure 1).

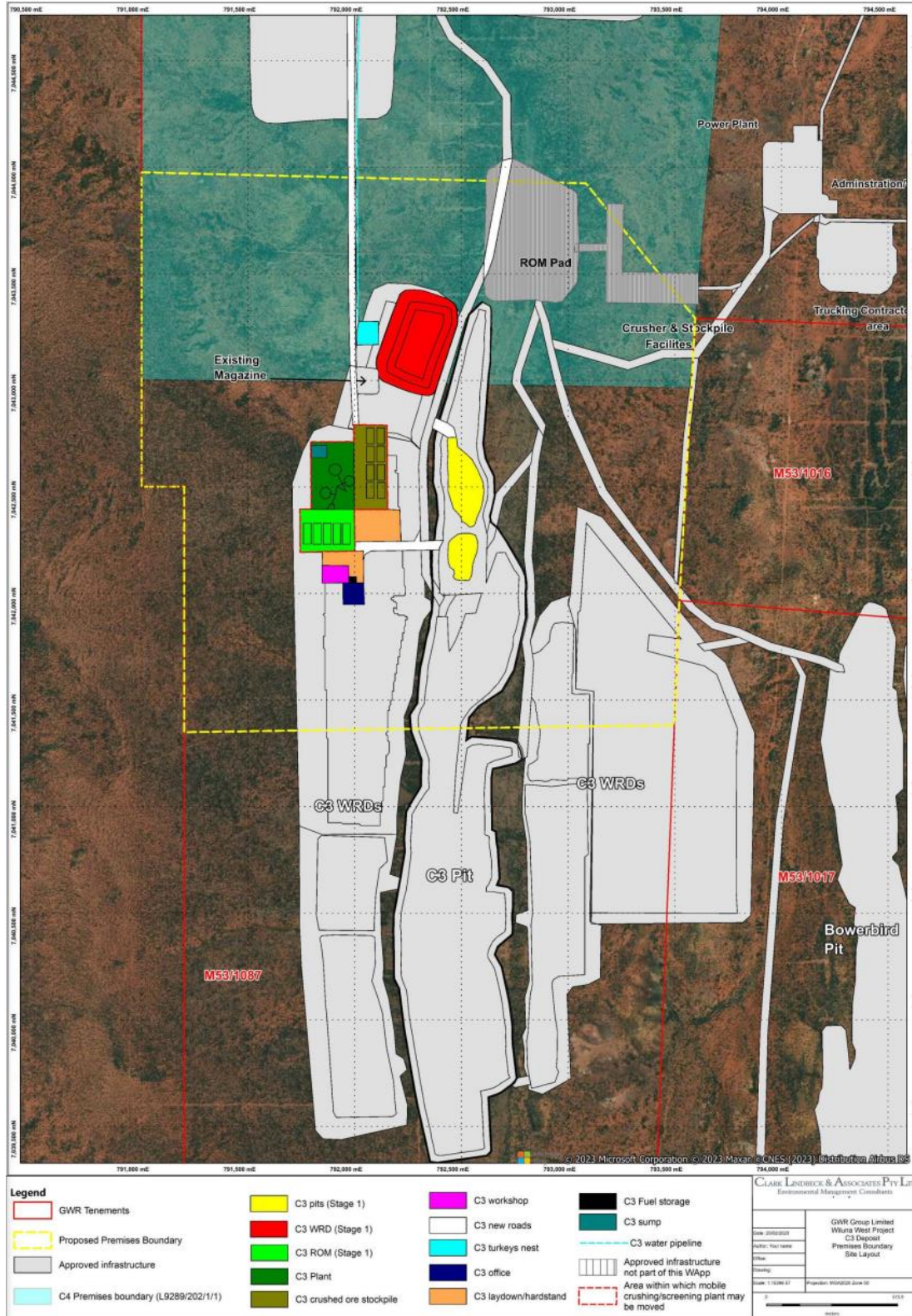


Figure 1: Map of proposed layout with prescribed premises boundary

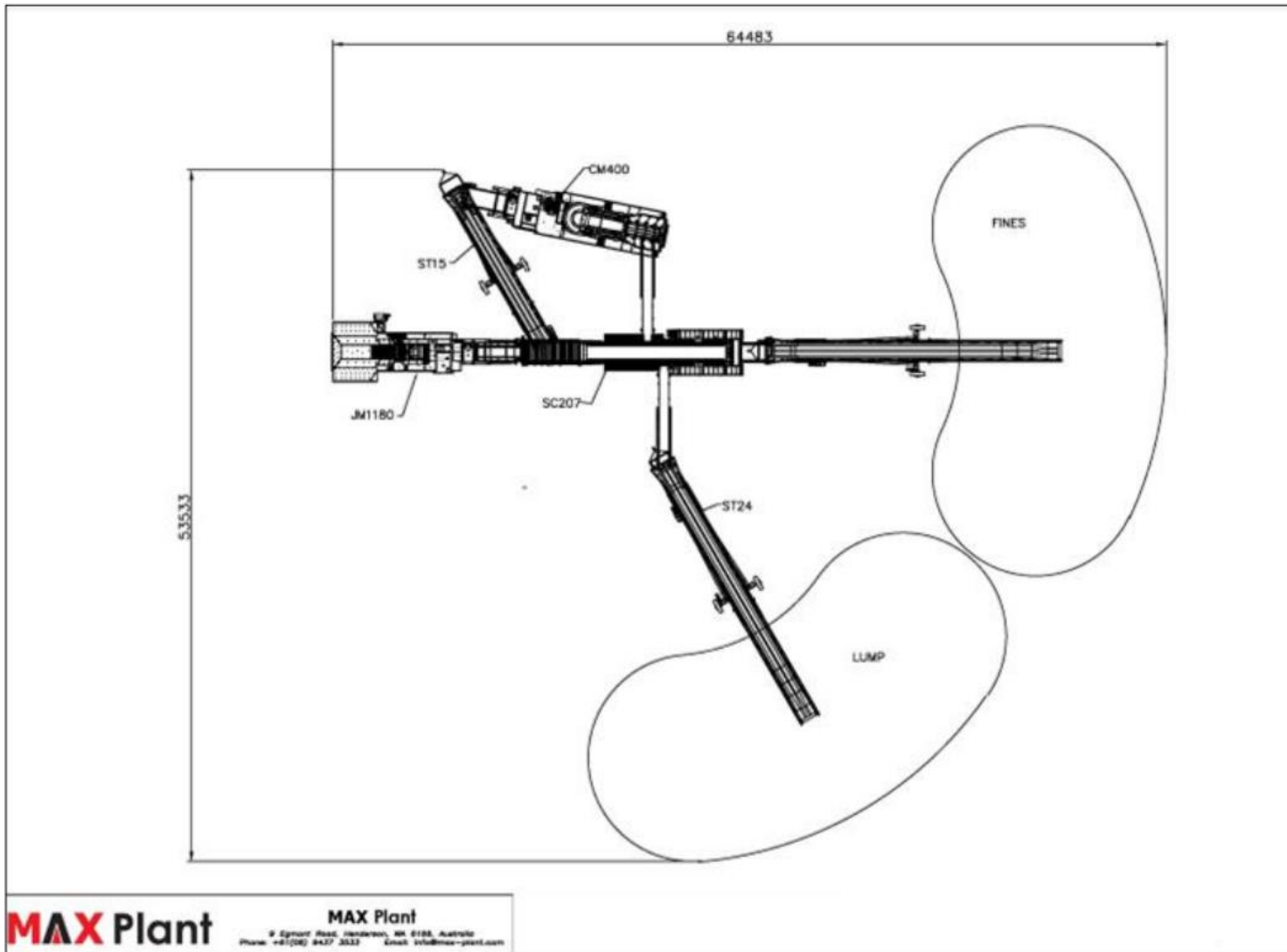


Figure 2: Indicative site layout for screening and crushing plant

Schedule 2: Premises boundary coordinates

ID	Longitude	Latitude
1	-26.6953	119.9244
2	-26.6953	119.9453
3	-26.7009	119.9506
4	-26.7182	119.9501
5	-26.7189	119.927
6	-26.7085	119.9268
7	-26.7086	119.9248