



Works Approval

Works approval number W6919/2024/1

Works approval holder Covalent Lithium Pty Ltd

ACN 70 623 090 139

Registered business address Address

DWER file number DER2024/000078

Duration 22/08/2024 to 21/08/2027

Date of issue 22/08/2024

Premises details Earl Grey Lithium Project
Marvel Loch-Forrestania Road
MOUNT HOLLAND
Legal description
Mining Tenement M77/1080
As defined by the Premises map in Schedule 1 and
the coordinates in Schedule 2 of the issued Works
Approval

Prescribed premises category description (Schedule 1, <i>Environmental Protection Regulations 1987</i>)	Assessed design capacity
Category 6: Mine Dewatering	500 000 tonnes per annum

This works approval is granted to the works approval holder, subject to the attached conditions, on 22 August 2024, by:

**MANAGER, RESOURCE INDUSTRIES
INDUSTRY REGULATION (STATE-WIDE DELIVERY)**
*Officer delegated under section 20
of the Environmental Protection Act 1986*

Works approval history

Date	Reference number	Summary of changes
22/08/2024	W6919/2024/1	Works approval granted.

Interpretation

In this works approval:

- (a) the words 'including', 'includes' and 'include' in conditions mean "including but not limited to", and similar, as appropriate;
- (b) where any word or phrase is given a defined meaning, any other part of speech or other grammatical form of that word or phrase has a corresponding meaning;
- (c) where tables are used in a condition, each row in a table constitutes a separate condition;
- (d) any reference to an Australian or other standard, guideline, or code of practice in this works approval:
 - (i) if dated, refers to that particular version; and
 - (ii) if not dated, refers to the latest version and therefore may be subject to change over time;
- (e) unless specified otherwise, any reference to a section of an Act refers to that section of the EP Act; and
- (f) unless specified otherwise, all definitions are in accordance with the EP Act.

NOTE: This works approval requires specific conditions to be met but does not provide any implied authorisation for other emissions, discharges, or activities not specified in this works approval.

Works approval conditions

The works approval holder must ensure that the following conditions are complied with:

Construction phase

Infrastructure and equipment

1. The works approval holder must:
 - (a) construct and/or install the infrastructure and/or equipment;
 - (b) in accordance with the corresponding design and construction / installation requirements; and
 - (c) at the corresponding infrastructure location; and
 - (d) within the corresponding timeframe,
 as set out in Table 1.

Table 1: Design and construction / installation requirements

	Infrastructure	Design and construction / installation requirements	Infrastructure location
1.	Dewatering (Delivery) Pipeline	<ul style="list-style-type: none"> • Pipes constructed of Class PE100 high density polyethylene (HDPE) installed above ground; • Out-of-pit pipelines to be installed in excavated trench or within a bunded area and graded longitudinally to either the Earl Grey Lithium Pit or the Earl Grey Pit; or if low points exist, in-ground sumps with a minimum capacity of 50 m³ are to be constructed (to collect water in the event of pipe rupture); • Air valve to be positioned at intermediate high point; • Scour valve to be positioned at intermediate low point along the pipeline route; and • Flow meters to be installed to measure volume of water being discharged to the water storage arrangements, and to measure water discharged to the Earl Grey Pit. 	Shown in Schedule 1, Figure 2
2.	In-Pit Sump Pump	<ul style="list-style-type: none"> • In pit sump(s) to be constructed to contain and centralise dewatering water and surface/rainfall flows; • Pump to be installed with sufficient capacity to transfer water to pit crest; and • Pump to be controlled with float system to pump water when reaches a set level. 	Shown in Schedule 1, Figure 2
3.	Standpipe and Pump	<ul style="list-style-type: none"> • Standpipe and pump to be located on hardstand bunded area graded 	Shown in Schedule 1, Figure 2 and 3

	Infrastructure	Design and construction / installation requirements	Infrastructure location
		longitudinally towards the Earl Grey Pit.	
4.	Water Storage Tank	<ul style="list-style-type: none"> Water-tight above ground tank; Up to 1,000kL capacity; Tank to have inlet, outlet and overflow flanges; and Tank overflow to report to a HDPE pipeline that reports to the Earl Grey Pit void at about 445.0 mAHD. 	Shown in Schedule 1, Figure 2 and 3
5.	Overflow pipe from water storage arrangement (as referenced in item 4).	<ul style="list-style-type: none"> Overflow pipeline to be installed in excavated trench or within a bunded area and graded longitudinally to the Earl Grey Pit void. 	Shown in Schedule 1, Figure 3

2. The works approval holder must use water carts to manage dust lift-off from active construction areas to protect the environment by preventing and, where that is not possible, minimising dust emissions that may cause, unreasonable emissions, pollution or environmental harm.
3. The work approval holder must ensure that where dewatering water used in dust suppression activities it is only applied to active construction and laydown areas and associated road networks to avoid spray-drift and surface run-off impacts to adjacent land and vegetation.

Compliance reporting

4. The works approval holder must within 30 calendar days of an item of infrastructure or equipment required by condition 1 being constructed and/or installed:
 - (a) undertake an audit of their compliance with the requirements of condition 1; and
 - (b) prepare and submit to the CEO an Environmental Compliance Report on that compliance.
5. The Environmental Compliance Report required by condition 4, must include as a minimum the following:
 - (a) certification by a suitably qualified engineer that the items of infrastructure or component(s) thereof, as specified in condition 1, have been constructed in accordance with the relevant requirements specified in condition 1;
 - (b) as constructed plans and a detailed site plan for each item of infrastructure or component of infrastructure specified in condition 1; and
 - (c) be signed by a person authorised to represent the works approval holder and contains the printed name and position of that person.

Time limited operations phase

Commencement and duration

6. The works approval holder may only commence time limited operations for an item of infrastructure identified in condition 1 where the Environmental Compliance Report as required by condition 4 and 5 has been submitted by the works approval holder for that item of infrastructure.
7. The works approval holder may conduct time limited operations for an item of infrastructure specified in condition 8:
 - (a) for a period not exceeding 180 calendar days from the day the works approval holder meets the requirements of condition 4 and 5 for that item of infrastructure; or
 - (b) until such time as a licence for that item of infrastructure is granted in accordance with Part V of the *Environmental Protection Act 1986*, if one is granted before the end of the period specified in condition 7(a).

Time limited operations requirements and emission limits

8. During time limited operations, the works approval holder must ensure that the premises infrastructure and equipment listed in Table 3 and located at the corresponding infrastructure location is maintained and operated in accordance with the corresponding operational requirement set out in Table 3.

Table 2: Infrastructure and equipment requirements during time limited operations

Item	Site infrastructure and equipment	Operational requirements	Infrastructure location
1.	Dewatering (Delivery) Pipeline	<ul style="list-style-type: none"> • Visual inspection of pipeline integrity daily (when dewatering is occurring); • If a leak is identified, pumping is to cease immediately, isolate the area of concern, and repairs made prior to pumping recommencing; and • A written log must be maintained for each inspection, including details of any management and/or rectification actions implemented (where required), with the record of each inspection signed by the responsible person. 	Shown in Schedule 1, Figure 2
2.	Water Storage Tank	<ul style="list-style-type: none"> • Weekly inspections of tank integrity (when storing water); and • A written log must be maintained for each inspection, with the record of each inspection signed by the responsible person. 	Shown in Schedule 1, Figure 2 and 3
3.	Overflow pipe from water storage arrangements	<ul style="list-style-type: none"> • Visual inspection of pipeline integrity daily (when dewatering is occurring); 	Shown in Schedule 1, Figure 3

Item	Site infrastructure and equipment	Operational requirements	Infrastructure location
	(as referenced in item 2)).	<ul style="list-style-type: none"> If a leak is identified, pumping is to cease immediately, isolate the area of concern, and repairs made prior to pumping recommencing; and A written log must be maintained for each inspection, including details of any management and/or rectification actions implemented (where required), with the record of each inspection signed by the responsible person. 	
4.	Earl Grey Pit	<ul style="list-style-type: none"> Freeboard maintained at a level of equal to or greater than 5 m from the lowest elevation of the pit crest; Weekly inspections of freeboard levels; and A written log must be maintained for each inspection, including details of any management and/or rectification actions implemented (where required), with the record of each inspection signed by the responsible person. 	Shown in Schedule 1, Figure 1 and 2.
5.	Water Cart	<ul style="list-style-type: none"> Water carts must be available at the premises to manage dust emissions form operational areas. 	None specified

9. During time limited operations, the works approval holder must ensure that the emission(s) specified in Table 4, are discharged only from the corresponding discharge point(s) and only at the corresponding discharge point location(s).

Table 4: Authorised discharge points

No.	Emission	Discharge point	Discharge point location
1.	Dewatering Discharge	Water Storage Tank	Shown in Schedule 1, Figures 2 and3
		Earl Grey Gold Mining Pit	Shown in Schedule 1, Figure 2

Water monitoring during time limited operations

10. During time limited operations, the works approval holder must monitor the volume and quality of dewatering water in accordance with Table 5.

Table 5: Dewatering volume and water quality monitoring

Monitoring location	Parameter	Unit	Frequency	Sampling and Analysis Method
Raw dewatering	Volumetric flow rate – discharge to water storage tank/pond	m ³ /s	Continuous	Flow meter

Monitoring location	Parameter	Unit	Frequency	Sampling and Analysis Method
water monitoring location	Volumetric flow rate – discharge to Earl Grey Pit	m ³ /s	Continuous	Flow meter
	Volumetric flow rate – used for dust suppression	m ³ /s	-	Mass balance
	pH ¹	-	Weekly for the first month, then monthly thereafter	Spot sample, in accordance with AS/NZS 5667.1
	Electrical conductivity ¹	µS/cm		
	Laboratory parameters as per Table 7 of Licence L9326/2022/1	-	3 monthly monitoring events within the time limited operations period	As per Table 7 of Licence L9326/2022/1

Note 1: In-field non-NATA accredited analysis permitted,

Compliance reporting

11. The works approval holder must submit to the CEO a report on the time limited operations within 30 calendar days of the completion date of time limited operations or 90 calendar days before the expiration date of the works approval, whichever is the sooner.
12. The works approval holder must ensure the report required by condition 11 includes the following:
 - (a) a summary of the time limited operations, including timeframes and amount of dewater discharged;
 - (b) a summary of the environmental performance of all infrastructure as constructed or installed (as applicable), which includes records detailing the:
 - (i) Dewatering (Delivery) Pipeline;
 - (ii) Water Storage Tank OR Water Storage Pond;
 - (iii) Overflow channel from water storage arrangements; and
 - (iv) In-pit sump pump.
 - (c) summary of monitoring conducted in accordance with condition 10;
 - (d) a review of performance and compliance against the conditions of the works approval; and
 - (e) where the manufacturer's design specifications and the conditions of this works approval have not been met, what measures will the works approval holder take to meet them, and what timeframes will be required to implement those measures.

Records and reporting (general)

- 13.** The works approval holder must record the following information in relation to complaints received by the works approval holder (whether received directly from a complainant or forwarded to them by the Department or another party) about any alleged emissions from the premises:
- (a) the name and contact details of the complainant, (if provided);
 - (b) the time and date of the complaint;
 - (c) the complete details of the complaint and any other concerns or other issues raised; and
 - (d) the complete details and dates of any action taken by the works approval holder to investigate or respond to any complaint.
- 14.** The works approval holder must maintain accurate and auditable books including the following records, information, reports, and data required by this works approval:
- (a) the works conducted in accordance with condition 1;
 - (b) any maintenance of infrastructure that is performed in the course of complying with condition 8;
 - (c) monitoring conducted in accordance with condition 10; and
 - (d) complaints received under condition 13.
- 15.** The books specified under condition 14 must:
- (a) be legible;
 - (b) if amended, be amended in such a way that the original version(s) and any subsequent amendments remain legible and are capable of retrieval;
 - (c) be retained by the works approval holder for the duration of the works approval; and
 - (d) be available to be produced to an inspector or the CEO as required.

Definitions

In this works approval, the terms in Table 6 have the meanings defined.

Table 6: Definitions

Term	Definition
AS/NZS 5667.1	means the Australian/New Zealand <i>Standard for Water quality Sampling Part 1: Guidance on the design of sampling programs, sampling techniques and the preservation and handling of samples</i> (Standards Australia).
books	has the same meaning given to that term under the EP Act.
CEO	means Chief Executive Officer. CEO for the purposes of notification means: Director General Department administering the <i>Environmental Protection Act 1986</i> Locked Bag 10 Joondalup DC WA 6919 info@dwer.wa.gov.au
Department	means the department established under section 35 of the <i>Public Sector Management Act 1994</i> and designated as responsible for the administration of Part V Division 3 of the EP Act.
discharge	has the same meaning given to that term under the EP Act.
emission	has the same meaning given to that term under the EP Act.
environmental commissioning	means the sequence of activities to be undertaken to test equipment integrity and operation, or to determine the environmental performance, of equipment and infrastructure to establish or test a steady state operation and confirm design specifications.
Environmental Compliance Report	means a report to satisfy the CEO that the conditioned infrastructure and/or equipment has been constructed and/or installed in accordance with the works approval.
EP Act	<i>Environmental Protection Act 1986</i> (WA).
EP Regulations	<i>Environmental Protection Regulations 1987</i> (WA).
Licence L9326/2022/1	means Licence L9326/2022/1 as accessed on DWER's website at: https://www.der.wa.gov.au/our-work/licences-and-works-approvals/current-licences
premises	the premises to which this licence applies, as specified at the front of this licence and as shown on the premises map Figure 1 in Schedule 1 to this works approval.

Term	Definition
prescribed premises	has the same meaning given to that term under the EP Act.
Suitably qualified engineer	means a person who: holds a relevant tertiary academic qualification in Mine Engineering and/or Civil Engineering; and has a minimum of three years of experience working in the relevant area/field of expertise.
time limited operations	refers to the operation of the infrastructure and equipment identified under this works approval that is authorised for that purpose, subject to the relevant conditions.
waste	has the same meaning given to that term under the EP Act.
works approval	refers to this document, which evidences the grant of the works approval by the CEO under section 54 of the EP Act, subject to the conditions.
works approval holder	refers to the occupier of the premises being the person to whom this works approval has been granted, as specified at the front of this works approval.

END OF CONDITIONS

Schedule 1: Maps

Premises map

The boundary of the prescribed premises is shown in the map below.

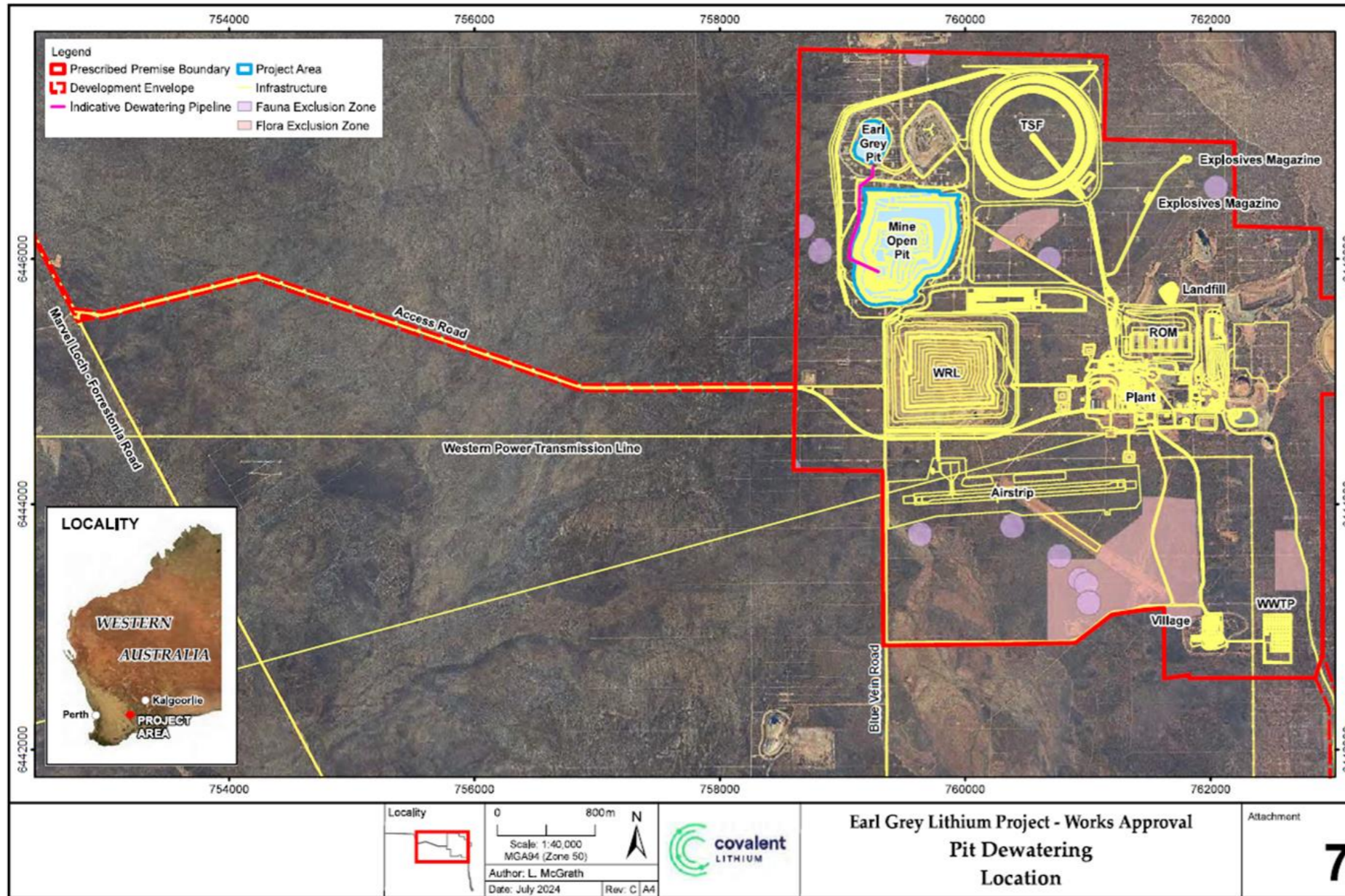


Figure 1: Prescribed premises boundary of the Earl Grey Lithium Project

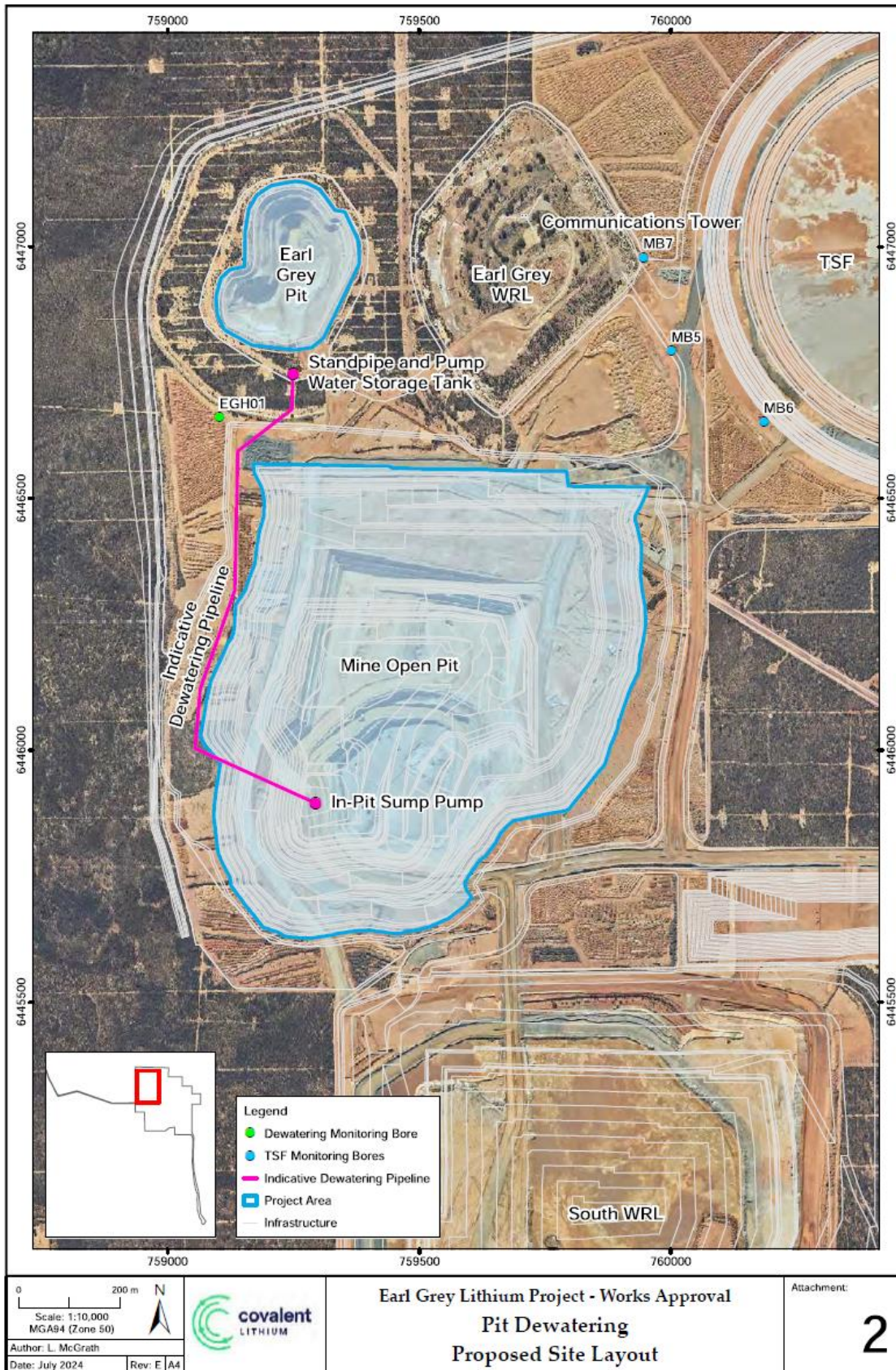


Figure 2: Layout of Dewatering Pipeline and Discharge point

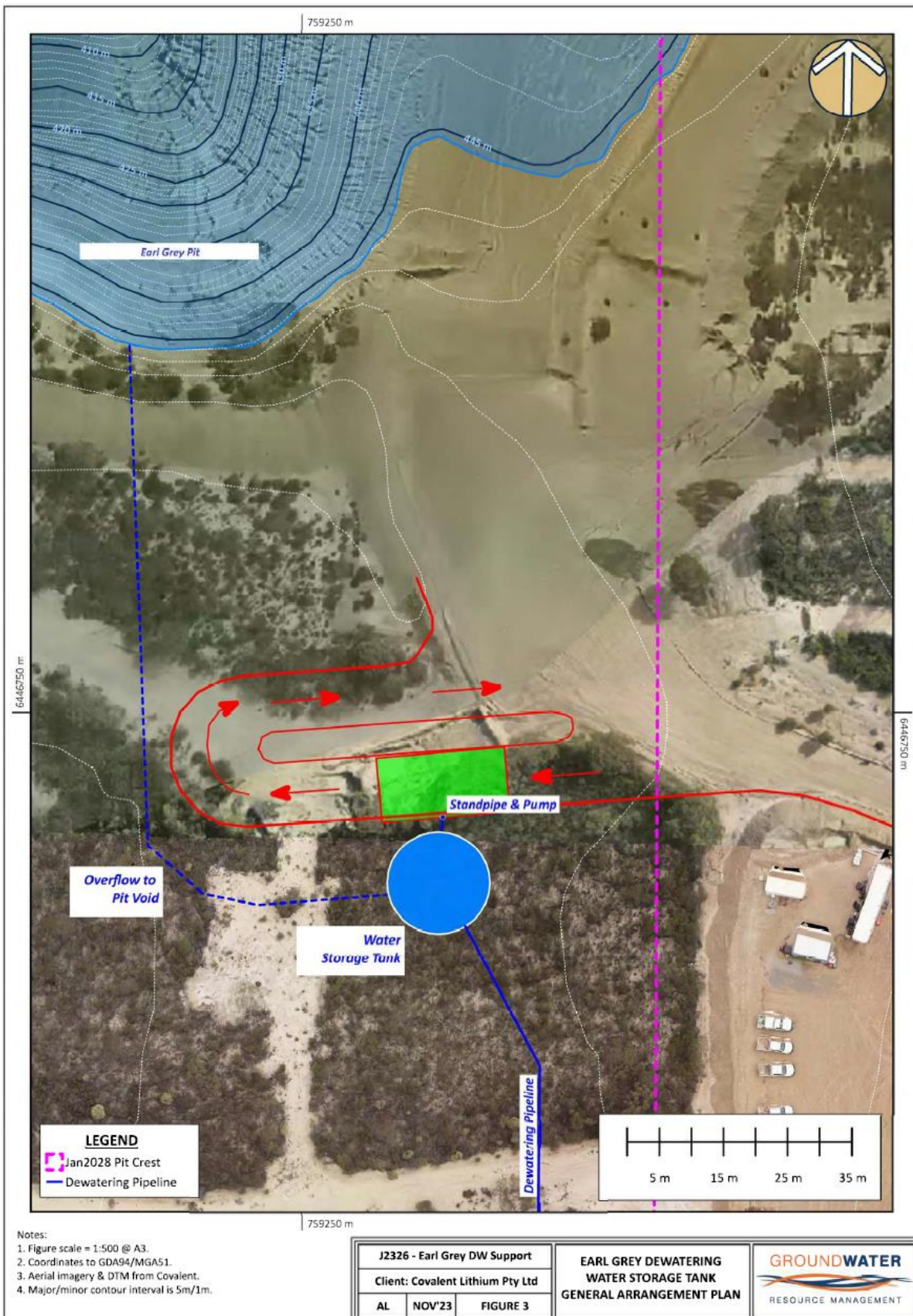


Figure 3: Water Storage Tank Layout

W6919/2024/1 (22/08/2024)
 IR-T05 Works approval template (v6.0) (September 2022)