



**Licence number** L7438/2000/9

**Licence holder** Milne Agrigroup Pty Ltd

**ACN** 008 919 579

**Registered business address** 2 Alumina Road  
ROCKINGHAM WA 6168

**DWER file number** ILS2014/000017

**Duration** 24/03/2012 to 23/03/2030

**Date of issue** 23/03/2012

**Date of amendment** 26/09/2024

**Premises details** Milne Feeds  
103-105 Welshpool Road  
WELSHPOOL WA 6106

Legal description -  
Lot 501 on Plan 53872, Lot 601 on Diagram Plan  
404603 Welshpool Road and Lot 8 on Diagram  
78445 John Street Welshpool, WA 6106

Prescribed premises category description (Schedule 1, <i>Environmental Protection Regulations 1987</i> )	Assessed production capacity
Category 23: Animal Feed Manufacturing	150,000 tonnes per annual period
Category 61: Liquid waste facility – premises on which liquid waste produced on other premises (other than sewerage waste) is stored, reprocessed, treated or irrigated	3,500 tonnes per annual period

This licence is granted to the licence holder, subject to the attached conditions, on 26 September 2024, by:

**Amine Fisher**

**Manager, Process Industries**

an officer delegated under section 20 of the *Environmental Protection Act 1986* (WA)

## Licence history

Date	Reference number	Summary of changes
24/03/2012	L7438/2000/9	Licence granted
29/4/2016	L7438/2000/9	Expiry date amended to 23/3/2030.
17/11/2016	L7438/2000/9	Amendment Notice 1 change of licensee's registered business address.
30/11/2023	L7438/2000/9	Licence amendment to add category 61: liquid waste facility onto the licence.
26/09/2024	L7438/2000/9	Licence review and associated amendment focusing on dust emissions

## Interpretation

In this licence:

- (a) the words 'including', 'includes' and 'include' in conditions mean "including but not limited to", and similar, as appropriate;
- (b) where any word or phrase is given a defined meaning, any other part of speech or other grammatical form of that word or phrase has a corresponding meaning;
- (c) where tables are used in a condition, each row in a table constitutes a separate condition;
- (d) any reference to an Australian or other standard, guideline, or code of practice in this licence:
  - (i) if dated, refers to that particular version; and
  - (ii) if not dated, refers to the latest version and therefore may be subject to change over time;
- (e) unless specified otherwise, any reference to a section of an Act refers to that section of the EP Act; and
- (f) unless specified otherwise, all definitions are in accordance with the EP Act.

**NOTE:** This licence requires specific conditions to be met but does not provide any implied authorisation for other emissions, discharges, or activities not specified in this licence.

## Licence conditions

The licence holder must ensure that the following conditions are complied with:

### Infrastructure and equipment

- The licence holder must ensure that the site infrastructure and equipment listed in Table 1 and located at the corresponding infrastructure location is maintained and operated in accordance with the corresponding operational requirement set out in Table 1.

**Table 1: Infrastructure and equipment requirements**

No.	Site infrastructure and equipment	Operational requirement	Infrastructure location
1	Hardstand areas	<ol style="list-style-type: none"> <li>Maintain a bitumen cover over the weighbridge, transfer area and other trafficable areas.</li> <li>Regularly cleaned/swept to ensure there is no build-up of dust.</li> <li>Any dust, raw material or finished product that is recovered from the cleaning/sweeping of hardstand areas must be stored in an enclosed container prior to disposal off site or reuse.</li> </ol>	NA
2	Dump sink 1 Dump sink 3 Dump sink 4	<ol style="list-style-type: none"> <li>All bulk raw material (excluding straw) must only be unloaded through dump sink 1, dump sink 3 or dump sink 4.</li> <li>Both entry and exit doors or curtains must remain closed during unloading.</li> <li>Dust and spilt raw material must be swept or blown into dump sinks following receipt of each load.</li> <li>Dump sink 1 reverse pulse dust filter must be operated when receiving material through dump sink 1.</li> <li>Dump sink 3 burnley baffle system must be in operation when receiving materials through dump sink 3.</li> </ol>	See Figure 4 in Schedule 1  (Dump sink 1 Intake, Dump sink 3 intake and Dump sink 4 internal intake)
3	Mill building	<ol style="list-style-type: none"> <li>Doors and windows must remain closed except to allow personnel or vehicle access.</li> <li>Hammer mill dust filters must be operated when the hammer mill is operating.</li> <li>Pellet press cooler cyclones must be operated when the related pellet press cooler is operating.</li> <li>Premix dust filter must be operated when the premix room is operating.</li> <li>Hand tip station dust filter must be operated when materials are being tipped at the hand tip station.</li> <li>RIB 18 dust filter must be operated when the RIB 18 blower system is operating.</li> </ol>	See Figure 2 in Schedule 1  (Mill building)
4	Silos 1-8	<ol style="list-style-type: none"> <li>The silo reverse pulse bag dust filter must be operated when a silo is receiving blown transferred material.</li> </ol>	See Figure 2 in Schedule 1  (Storage silos emission points)
5	1 x 35,000L Canola oil tank 1 x 35,000L Wastewater tank P150 25,000L tank	<ol style="list-style-type: none"> <li>The tanks must be located in a containment bund that is maintained: –                             <ol style="list-style-type: none"> <li>in a fit for purpose condition for containing liquids and free of cracks or damage; –</li> <li>with capacity to contain not less than 110% of the</li> </ol> </li> </ol>	See Figure 3 in Schedule 1  (Canola storage tank)  (Wastewater)

No.	Site infrastructure and equipment	Operational requirement	Infrastructure location
	Aerogel 23,000L tank	<p>volume of the largest tank; and</p> <p>iii. all bund drainage pipes must have drain valves installed which remain locked in the closed position, unless they are in use for the collection of the bund contents.</p> <p>b) Spills or leaks from the tanks must be immediately recovered, removed or disposed whether inside or outside of the containment bund.</p>	<p>storage tank)</p> <p>(P150 Storage tank)</p> <p>(Aerogel tank storage)</p>
6	Straw/hay storage area	<p>a) All straw/hay must only be unloaded within the hay storage area.</p> <p>b) All straw/hay must only be stored in the hay storage area.</p>	<p>See Figure 2 in Schedule 1</p> <p>(Straw/hay storage dome)</p>
7	Straw tub grinder	<p>a) Must be maintained within a semi-enclosed shed with screen/(s) in place on the open sides when in operation</p> <p>b) Snap cuff dust filter must be operated when the grinder is in operation.</p>	<p>See Figure 2 in Schedule 1</p> <p>(Tub grinder area)</p>
8	<p>Final product loading areas</p> <p>Sheep Cube Alley (SCA) and Bulk Out loading (BOL)</p>	<p>a) All bulk final product must be loaded into trucks:</p> <p>i. via the loading chute within the loading areas; or</p> <p>ii. within the bulk storage shed with the doors closed.</p> <p>b) SCA loading chutes must be fitted with a dust reduction sock when in use for loading.</p> <p>c) BOL area must utilise dust reducing screens when in use for loading.</p>	<p>See Figure 4 in Schedule 1</p> <p>(SCA and BOL out-loading areas)</p>
9	Bulk storage shed	<p>a) Bulk raw material must not be stored in the bulk storage shed.</p> <p>b) Dust doors must remain closed at all times except to allow personnel or vehicle access.</p> <p>c) Shed must be swept/cleaned daily to remove all loose material not in bags or within three sided bins.</p>	<p>See Figure 2 in Schedule 1</p> <p>(Bulk shed storage)</p>
10	Stormwater sand filtration area	<p>a) All contaminated stormwater must be directed through the sand filtration area, prior to being discharged from the premises</p> <p>b) The sand filtration area must be maintained to effectively remove all contaminants from the stormwater prior to the stormwater being discharged from the premises</p>	<p>See Figure 6 in Schedule 1</p> <p>(Marked with an X)</p>

2. The licence holder must conduct visual inspections of the infrastructure specified in Table 2 in accordance with the requirements specified in that table.
3. The licence holder must maintain a written log of all inspections required by condition 2, with each inspection signed off by the person who conducted the inspection.
4. Where any inspection required by condition 2 identifies a spill or a buildup of loose material the works approval holder must clean up the material within one working day.

**Table 2: Inspection of infrastructure requirements**

Infrastructure	Inspection requirements	Frequency
Hardstand areas	Visually inspected for spills or the buildup of raw material or dust	Daily
Dump sink 1		
Dump sink 3		
Straw/hay storage area		
Final product loading area		
Bulk storage shed		

- The licence holder must ensure that no visible dust generated from the premises activities is discharged beyond the boundary of the premises.

### Waste acceptance

- The licence holder must only accept onto the premises waste of a waste type, which does not exceed the corresponding rate at which waste is received, and which meets the corresponding acceptance specification set out in Table 3.

**Table 3: Types of waste authorised to be accepted onto the premises**

Waste Type	Rate at which waste is received	Acceptance specification
Liquid waste: K200 food and beverage processing waste	Not more than 3500 tonnes per annual period	Wastewater must only be unloaded into the designated wastewater storage tank as shown in Figure 3 of schedule 1.

### Specified actions

- The licence holder must ensure that all trucks entering the premises with raw materials or leaving the premises with product have their trailers covered.
- The licence holder must ensure that the materials listed in Table 4 are stored as per the storage requirements specified in Table 4.

**Table 4: Material storage requirements**

Material	Storage requirements
Bulk raw materials	Stored only in dedicated silos or hoppers
Hay/Straw	Stored only in the straw storage dome
Packaged raw material	Stored only in the bulk storage shed, bulk bag storage area or dome shelters
Packaged finished product	
Bulk finished product	Stored only in silos or dedicated bins within the bulk storage shed
Liquid ingredients	Stored only in dedicated bunded tanks or in bunded IBC's on a hardstand area

- The licence holder must undertake an investigation of dust accumulation and sources on the Mill Building, Dump Sink 1 and all silo roofs, and submit an Infrastructure Dust Accumulation Investigation and Action Report on the investigation outcomes to the CEO by 31 January 2025.

- 10.** The Infrastructure Dust Accumulation Investigation and Action Report required by condition 9 must include, but not be limited to.
- (a) a labelled plan identifying the location of all building and silo roofs on the premises which were investigated for the presence of dust accumulation;
  - (b) a description of the methodology used to investigate for the presence of dust accumulation on all building and silo roofs;
  - (c) imagery and a description detailing the findings of the investigation for the presence of dust accumulation;
  - (d) where dust accumulation is identified by the investigation, analysis and description of the likely source of the accumulated dust; and
  - (e) where the investigation and analysis shows dust accumulation is likely to have been caused by the premises activities, an action plan that outlines proposed actions with associated timeframes for implementation for:
    - (i) removal of accumulated dust; and
    - (ii) removal or fixing of dust sources causing the accumulation to prevent continued dust accumulation.

### Authorised discharge points for air emissions

- 11.** The licence holder must ensure the emissions from the emission source listed in Table 5 are only emitted from the corresponding emission point and location specified in that table.

**Table 5: Authorised discharge points for air emissions**

Emission	Emission source	Emission point location (Schedule 1 Figure 5)
Particulate matter	Straw tub grinder	Straw grinder dust filter
	Raw ingredient silos	Silo 1-8 dust filter
	Hammer Mill	Hammer mill dust filter
	Pellet press	Pellet press cyclones
	Grain Transfer Cyclone	Grain transfer cyclone
	Mill Building	RIB 18 dust filter
	Dump sink 1	Dump sink 1 filter
NOx, CO	Boiler	Boiler Flume

### Records and reporting

- 12.** The licence holder must record the following information in relation to complaints received by the licence holder (whether received directly from a complainant or forwarded to them by the Department or another party) about any alleged emissions from the premises:
- (a) the name and contact details of the complainant, (if provided);
  - (b) the time and date of the complaint;
  - (c) the complete details of the complaint and any other concerns or other issues raised; and

- (d) the complete details, including time(s) and date(s) of any action taken by the licence holder to investigate and respond to any complaint.
- 13.** The licence holder must submit to the CEO a summary of the complaint details recorded in accordance with condition 12 during each annual period with the annual audit compliance report required by condition 14(b) for that annual period.
- 14.** The licence holder must:
- (a) undertake an audit of their compliance with the conditions of this licence during the preceding annual period; and
  - (b) prepare and submit to the CEO by no later than 30 days after the end of that annual period an Annual Audit Compliance Report in the approved form.
- 15.** The licence holder must maintain accurate and auditable books including the following records, information, reports, and data required by this licence:
- (a) the calculation of fees payable in respect of this licence;
  - (b) any maintenance of infrastructure that is performed in the course of complying with condition 1 of this licence;
  - (c) inspections undertaken in accordance with condition 2;
  - (d) record of any incident that included the loss of chemicals, including but not limited to, fuel, oil or other hydrocarbons; and
  - (e) complaints received under condition 12 of this licence.
- 16.** The books specified under condition 15 must:
- (a) be legible;
  - (b) if amended, be amended in such a way that the original version(s) and any subsequent amendments remain legible and are capable of retrieval;
  - (c) be retained by the licence holder for the duration of the licence; and
  - (d) be available to be produced to an inspector or the CEO as required.

## Definitions

In this licence, the terms in Table 6 have the meanings defined.

**Table 6: Definitions**

Term	Definition
ACN	Australian Company Number
Annual Audit Compliance Report (AACR)	means a report submitted in a format approved by the CEO (relevant guidelines and templates may be available on the Department's website).
annual period	a 12 month period commencing from 1 November until 31 October of the immediately following year.
books	has the same meaning given to that term under the EP Act.
bulk	Means an undivided quantity of loose material
CEO	means Chief Executive Officer of the Department. "submit to / notify the CEO" (or similar), means either: <p style="margin-left: 40px;">Director General Department administering the <i>Environmental Protection Act 1986</i> Locked Bag 10 Joondalup DC WA 6919</p> or: <a href="mailto:info@dwer.wa.gov.au">info@dwer.wa.gov.au</a>
Department	means the department established under section 35 of the <i>Public Sector Management Act 1994</i> (WA) and designated as responsible for the administration of the EP Act, which includes Part V Division 3.
EP Act	<i>Environmental Protection Act 1986</i> (WA)
EP Regulations	<i>Environmental Protection Regulations 1987</i> (WA)
IBC	means intermediate bulk container
licence	refers to this document, which evidences the grant of a licence by the CEO under section 57 of the EP Act, subject to the specified conditions contained within.
licence holder	refers to the occupier of the premises, being the person specified on the front of the licence as the person to whom this licence has been granted.
premises	refers to the premises to which this licence applies, as specified at the front of this licence and as shown on the premises map (Figure 1) in Schedule 1 to this licence.
raw materials	Means grains, meals and other additives, other than in a liquid form, used in the animal feed manufacturing process
RIB 18	Recipe ingredient bin 18, located within the main mill building
working day	A day that the premises is operating

---

**END OF CONDITIONS**



## Schedule 1: Maps

### Premises map

Figure 1: Map of the boundary of the prescribed premises, Premises boundary shown in green.

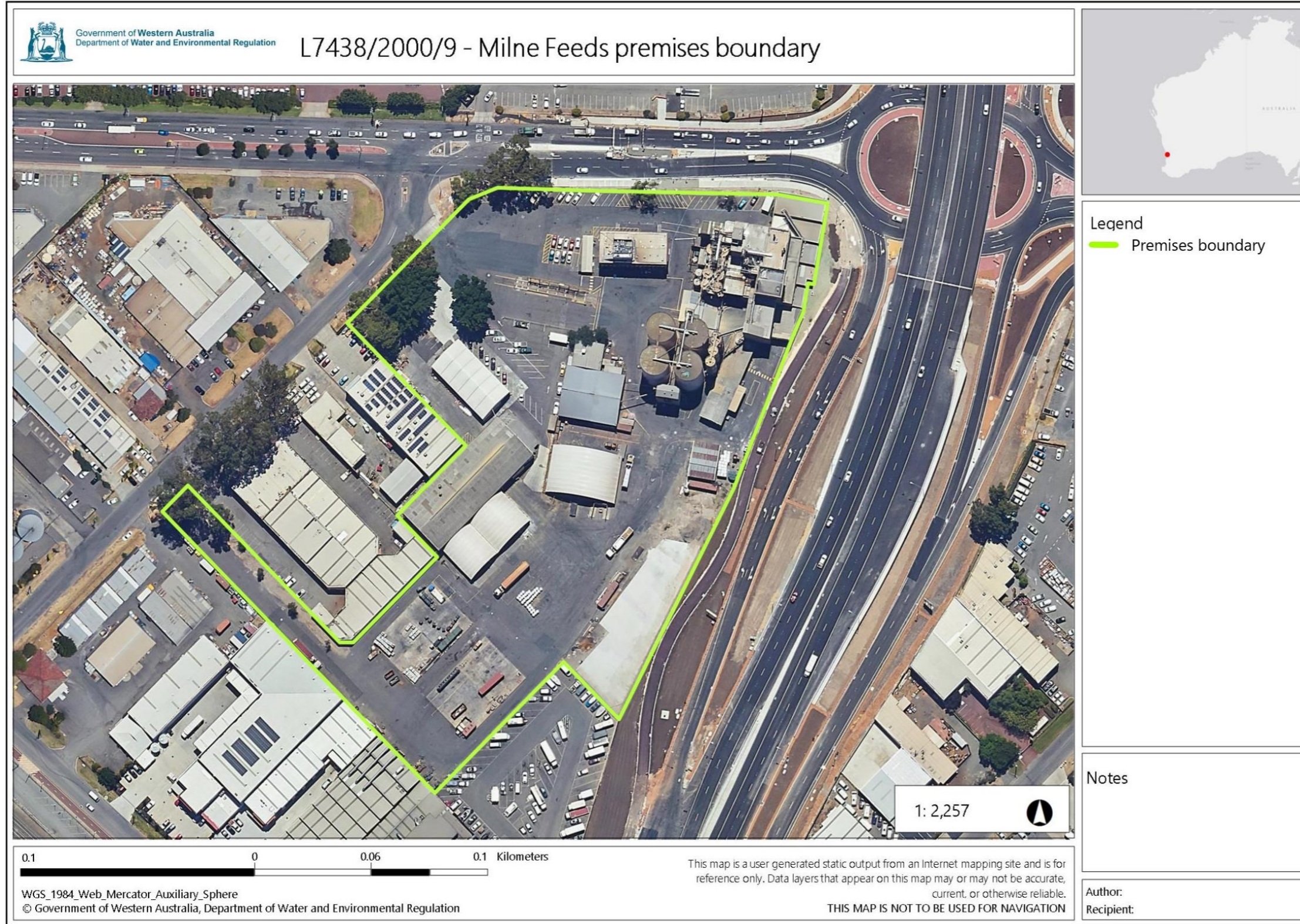


Figure 2: Premises Layout

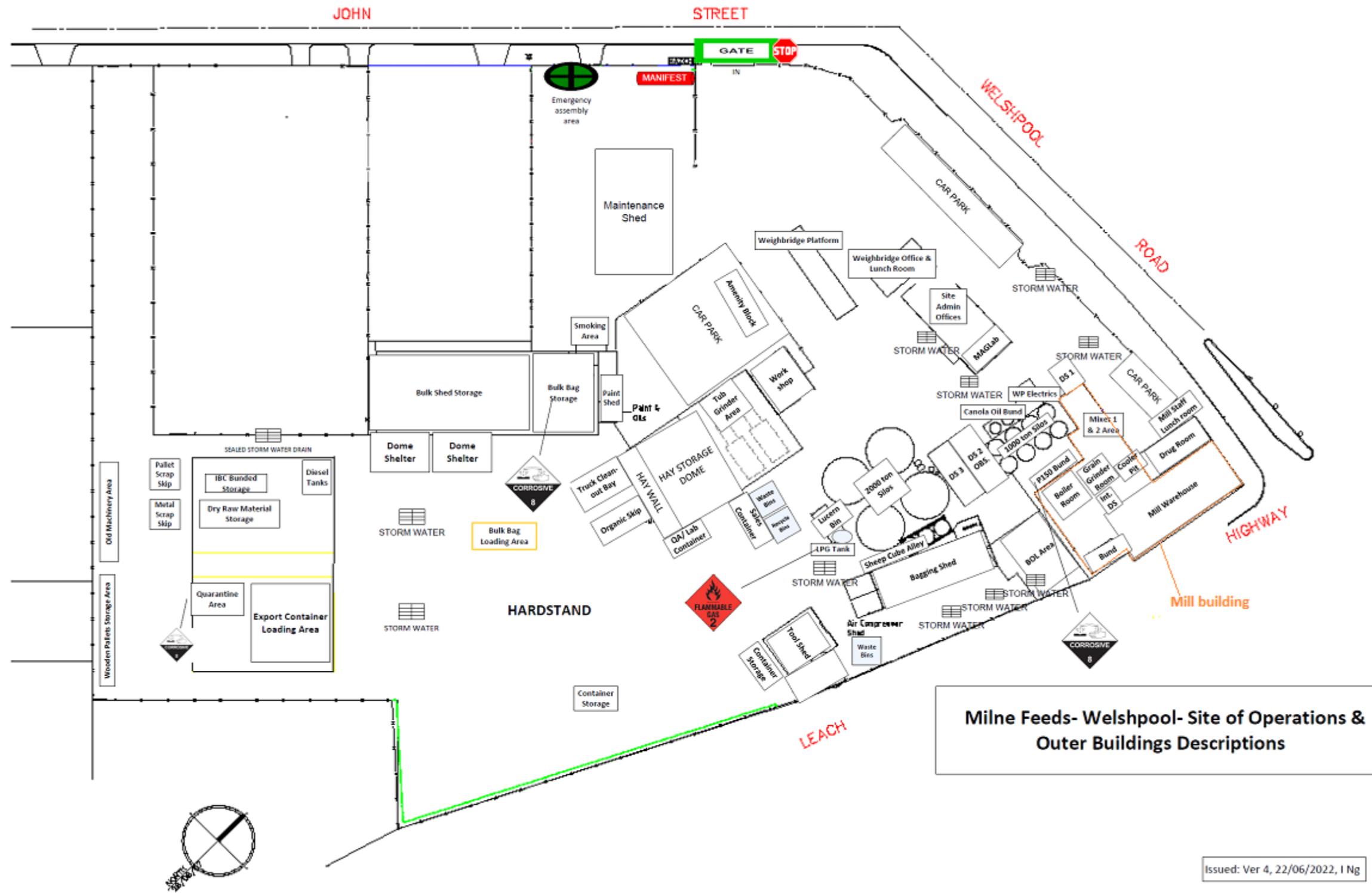
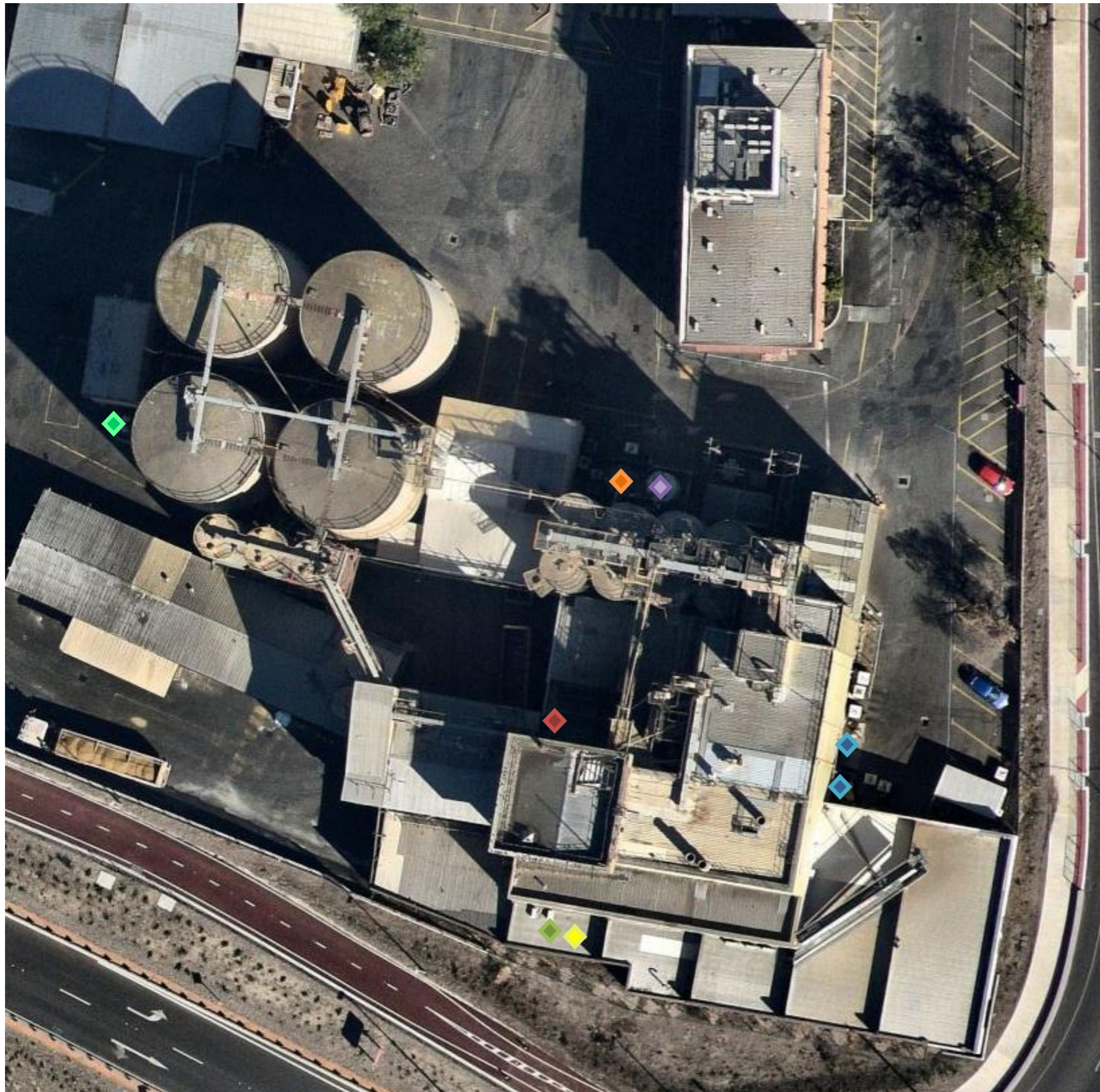


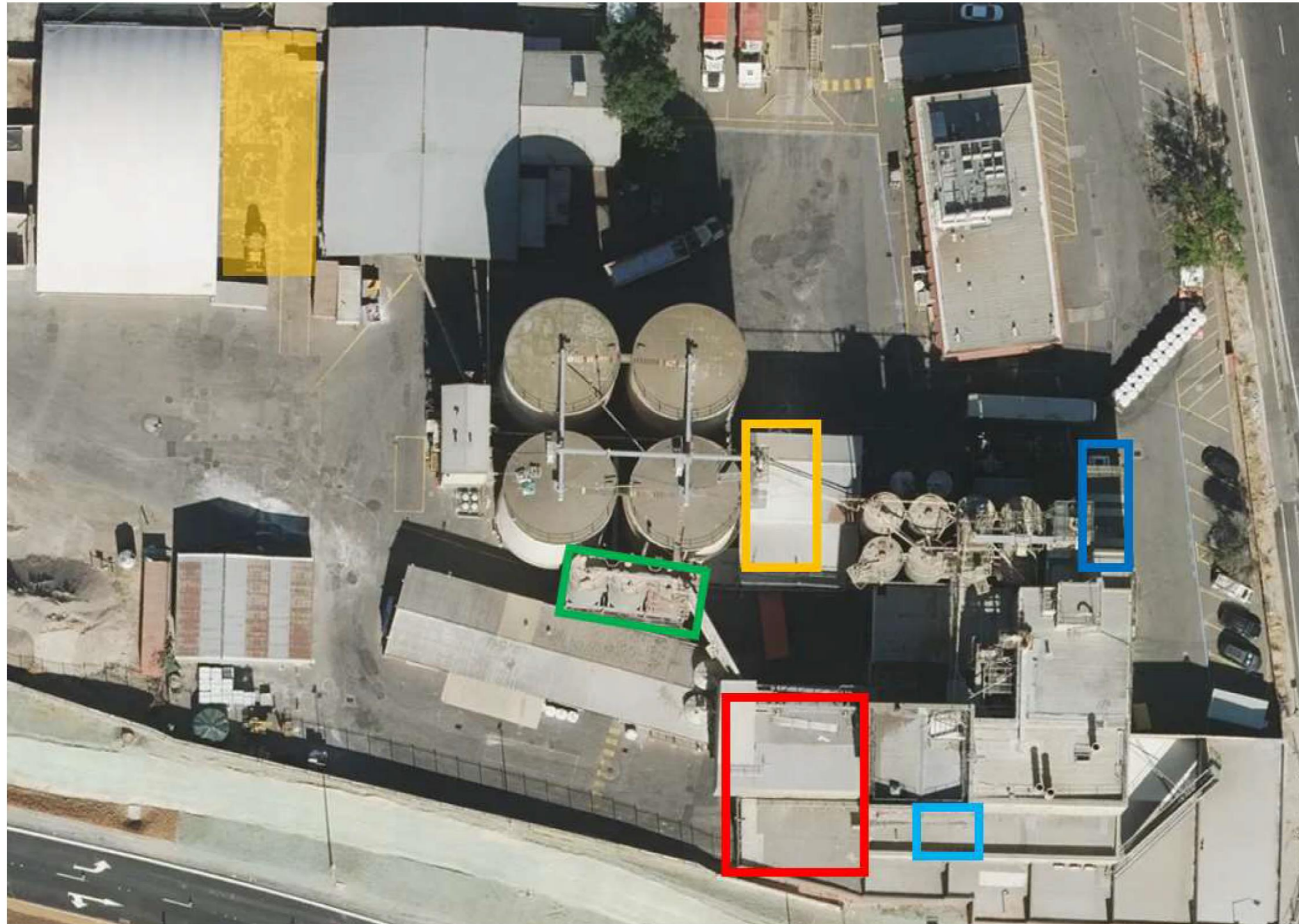
Figure 3: Liquid storage locations



### Liquid Storage Locations

- ◆ Molasses storage
- ◆ Canola Tank Storage
- ◆ Aerogel Storage
- ◆ Salmat Storage
- ◆ P150 Tank Storage
- ◆ LPG Storage
- ◆ K200 Wastewater Storage Tank

Figure 4: Receival and out-loading areas



**Receival & Out-loading Areas**

-  Dump Sink 1 Intake
-  Dump Sink 3 Intake
-  Dump Sink 4 Internal Intake
-  SCA Out-loading Area
-  BOL Out-loading Area
-  Straw Receive Area

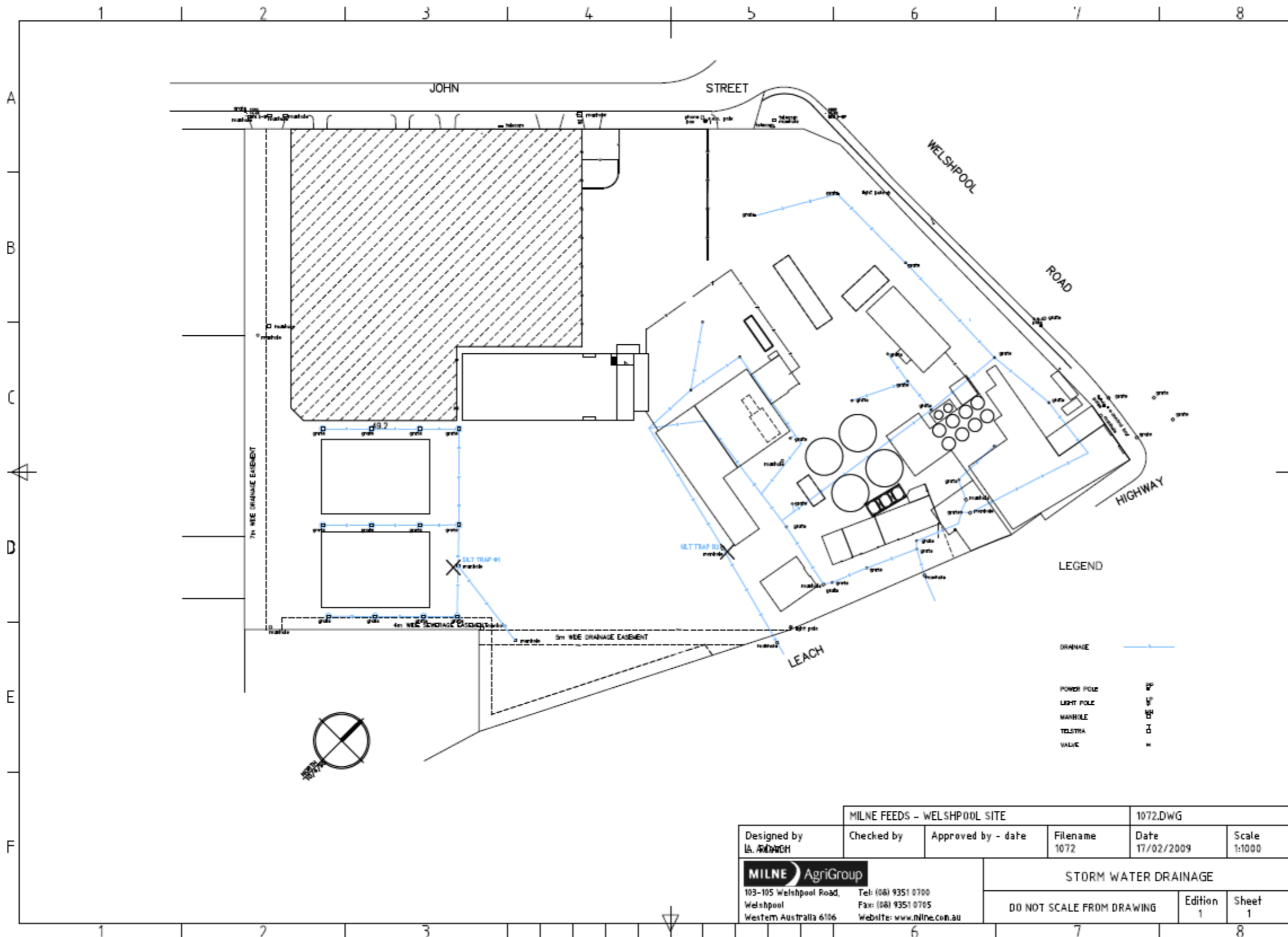
Figure 5: Dust filter and cyclone emission points



**Dust Filter & Cyclone Locations**

-  Pellet Press Cyclones
-  Boiler Flume
-  Dump Sink 1 Filter
-  Grain Transfer Cyclone
-  Silo 1-8 Dust Filter
-  Pre-mix Room Dust Filter
-  RIB 18 Dust Filter
-  Straw Grinder Dust Filter
-  Hammer Mill Dust Filters
-  Vacuum System Cyclone

Figure 6: Stormwater drainage Map



**Legend**

× - Sand filtration areas