



Licence number	L8562/2011/1
Licence holder	Pilbara Iron Company (Services) Pty Ltd
ACN	107 210 248
Registered business address	Level 22, Central Park 152-158 St Georges Terrace PERTH WA 6000
DWER file number	DER2014/000869-1
Duration	19/03/2012 to 18/03/2030
Date of issue	15/03/2012
Date of amendment	18/10/2024
Premises details	Gudai-Darri Iron Ore Mine L47/00701, AL70/00007 (L7SA), AML70/00252 (ML252SA), L47/00648, L47/00682, L47/00849, L47/00912 and L47/00768 NEWMAN WA 6753 As defined by the coordinates in Schedule 2 of the Revised Licence

Prescribed premises category description (Schedule 1, <i>Environmental Protection Regulations 1987</i>)	Assessed production / design capacity
Category 5: Processing or beneficiation of metallic or non-metallic ore	53,000,000 tonnes per annual period
Category 54: Sewage facility	558 cubic metres per day
Category 64: Class II putrescible landfill site	20,000 tonnes per annual period
Category 73: Bulk storage of chemicals etc.	1,530 cubic metres in aggregate

This amended licence is granted to the licence holder, subject to the attached conditions, on 18 October 2024 by:

MANAGER, RESOURCE INDUSTRIES

an officer delegated under section 20 of the *Environmental Protection Act 1986* (WA)

Licence history

Date	Reference number	Summary of changes
15/03/2012	L8562/2011/1	Licence granted.
07/03/2013	L8562/2011/1	Amendment to include category 64 and adjustment to the reporting year
29/11/2018	L8562/2011/1	<p>Amendment Notice 1</p> <p>Amendment for the following:</p> <ul style="list-style-type: none"> • Replace category 85 with category 54 to facilitate an increase in capacity of wastewater treatment from 46.5 m³/day to 418.5 m³/day; • Increase the throughput of category 64 from 50 tonnes per year to 2,000 tonnes per year and include special waste types 1 and 2. The latter is to cater for the disposal of asbestos wastes, which may be located during the refurbishment of the camp and clinical wastes from the medical centre; and • Changes to the boundary of the prescribed premises.
23/06/2020	L8562/2011/1	<p>Amendment Report for an additional 186 m³/day WWTP3 and associated spray field to service up to 1800 people (previously 1200).</p> <p>The total capacity of WWTPs onsite will be 558 m³/day. This incorporates the current Category 54 capacity of 418.5 m³/day, minus 46.5 m³/day for the old resource evaluation WWTP which is no longer operational and is to be decommissioned, and addition of the 186 m³/day WWTP3.</p> <p>Also amalgamated Amendment Notice 1.</p>
15/10/2020	L8562/2011/1	Licence amendment to increase the capacity of the Class II putrescible landfill to 20,000 tonnes per annum.
5/05/2023	L8562/2011/1	<p>Licence amendment for the following:</p> <ul style="list-style-type: none"> • Inclusion of constructed and commissioned (if required) infrastructure under works approval W6221/2019/1, W6622/2021/1, and W6520/2021/1; • Update the prescribed premises boundary as under works approval W6622/2021/1 and W6520/2021/1; • Condition imposed for the flexibility in nominated locations of proposed additional landfill sites within the prescribed premises boundary that would meet specified design and management conditions / criteria; • Update the premises name and licence holder; and • Any administrative changes.
18/10/2024	L8562/2011/1	Licence amendment to increase the design capacity of the main processing facilities from 43 million tonnes per annum (mtpa) to 53 mtpa as specified in Table 2.

Interpretation

In this licence:

- (a) the words 'including', 'includes' and 'include' in conditions mean "including but not limited to", and similar, as appropriate;
- (b) where any word or phrase is given a defined meaning, any other part of speech or other grammatical form of that word or phrase has a corresponding meaning;
- (c) where tables are used in a condition, each row in a table constitutes a separate condition;
- (d) any reference to an Australian or other standard, guideline, or code of practice in this licence:
 - (i) if dated, refers to that particular version; and
 - (ii) if not dated, refers to the latest version and therefore may be subject to change over time;
- (e) unless specified otherwise, any reference to a section of an Act refers to that section of the EP Act; and
- (f) unless specified otherwise, all definitions are in accordance with the EP Act.

NOTE: This licence requires specific conditions to be met but does not provide any implied authorisation for other emissions, discharges, or activities not specified in this licence.

Licence conditions

The licence holder must ensure that the following conditions are complied with:

General conditions

Stormwater management

1. The licence holder must ensure that:
 - (a) site stormwater diversion levees and drains are maintained; and
 - (b) the premises is drained such that contaminated stormwater is retained on the premise to allow treatment for sediment and total hydrocarbon prior to discharge off the premises.
2. The licence holder must ensure that sedimentation basins are maintained at each point of discharge from the premises such that there is sufficient retention time within the basin to reduce suspended solids prior to discharge of waters offsite.

Waste management from ancillary operations

3. The licence holder must ensure that systems are in place to ensure that hydrocarbon contaminated waters are not released to the environment.
4. The licence holder must utilise and maintain protective bunding, skimmers, silt traps, neutralisation pits, fuel and oil traps, drains and sealed collection sumps around operational infrastructure areas to enable recovery of spillages and protection of surrounding soils and groundwater.
5. The licence holder must as soon as practicable recover, or remove and dispose of, any liquid resulting from spills or leaks of chemicals including fuel, oil, or other hydrocarbons, to protect surrounding soils, surface water, and groundwater.

Infrastructure and equipment

Construction

6. The licence holder must construct and/or install the infrastructure and/or equipment listed in Table 1, in accordance with;
 - (a) the corresponding design and construction / installation requirements; and
 - (b) at the corresponding infrastructure location, as set out in Table 1.

Table 1: Design and construction / installation requirements

	Infrastructure	Design and construction / installation requirements	Location
1.	Proposed / subsequent landfill facilities	<p>Landfill facilities will have the following location requirements:</p> <ul style="list-style-type: none"> • Landfill site must be located within the prescribed premises boundary • Must not be located within an Environmentally Sensitive Area • Located more than 100 m from any permanent or perennial watercourse • Landfill sites will be located so that vertical distance between the waste and the highest seasonal and expected post mining ground water level is no less than 3 m <p>Landfill facilities will have the following requirements:</p> <ul style="list-style-type: none"> • Signage erected which clearly defines what waste is accepted • Where trenches are used to manage / store waste, stormwater management structures (i.e., bunding) to divert surface water flows away from the landfill must be installed • Where trenches are used to manage / store waste, a sump or bunding within the landfill to collect any surface water that has come into contact with waste • Putrescible landfill sites must be fenced to an appropriate height, gated, and locked to minimise unauthorised access and windblown waste • Landfill sites must have a firebreak (or cleared area) at least 3 m in width around boundary 	Schedule 1: Maps, Figure 2

7. The licence holder must operate the landfill facilities constructed under condition 6, in accordance with the conditions of this licence, following submission of the compliance document required under condition 17.

Operations

8. The licence holder must ensure that the site infrastructure and equipment listed in Table 2 and located at the corresponding infrastructure location is maintained and operated in accordance with the corresponding operational requirement set out in Table 2.

Table 2: Operational requirements

	Infrastructure	Operational requirements	Location
1.	Main processing facilities	<ul style="list-style-type: none"> No more than 53,000,000 tonnes per annual period Maintain and operate the high-pressure water fogging and water spray curtain system to ensure efficient operation Maintain and operate the spray booths for dust suppression at the conveyor transfer points while conveyors operating Maintain and operate the automatic water cannons and site weather monitoring system in the stockyard to minimise dust emissions Maintain the processing plant stormwater drain system 	Schedule 1: Figure 2
2.	BOO Plant	<ul style="list-style-type: none"> No more than 10,000,000 tonnes per annual period Maintain, operate, and utilise installed dust control, management, and suppression systems 	Schedule 1: Figure 2
3.	Bulk Fuel and chemical (hydrocarbon) storage facilities	<ul style="list-style-type: none"> Bulk Fuel and chemical (hydrocarbon) storage facilities to hold no more than a total aggregate of 1,530 m³ Hydrocarbon piping below ground must have visual inspections at the pits for any leaks in accordance with Rio Tinto standard specifications Provision of spill response equipment at all bulk hydrocarbon storage locations on site Weekly inspections of tank integrity and any potential leaks / damage to hydrocarbon related infrastructure / equipment Vehicle refuelling will occur over compacted, lined earthen pad or a concrete hardstand area Maintain, operate, and utilise installed hydrocarbon management structures and equipment 	Schedule 1: Figure 2
4.	Landfill sites	<ul style="list-style-type: none"> Landfill sites to have a combined maximum capacity of 20,000 tonnes per annual period Volumes of waste types disposed of to the landfill sites are to be recorded <p><u>Putrescible facilities</u></p> <ul style="list-style-type: none"> The following types of wastes are to be disposed of at the landfills: <ul style="list-style-type: none"> Clean Fill Uncontaminated Fill Inert Waste Type 1 Inert Waste Type 2 	Schedule 1: Figure 2

	Infrastructure	Operational requirements	Location
		<ul style="list-style-type: none"> - Special Waste Type 1 - Special Waste Type 2 - Putrescible Waste <p>as defined in the Landfill Definitions</p> <ul style="list-style-type: none"> • Tipping area of putrescible landfill sites must not be greater than 30 m in length and 2 m above ground level height • Waste in putrescible landfill sites will be covered weekly to at least 200 mm so that no waste is left exposed (including at final landform design) • Lockable gates to be secured when the landfill sites are unattended • Installed windrows, sumps, bunding, roll over bund etc. must be maintained to ensure clean stormwater ingress is prevented and contaminated stormwater does not egress the facility • Washed or windblown waste does not leave the fenced putrescible facilities • Any washed or windblown waste observed outside the tipping area is collected and returned to the tipping area on a monthly basis <p><u>Inert facilities</u></p> <ul style="list-style-type: none"> • The following types of wastes are to be disposed of at the inert facilities located on WRLs/stockpiles: <ul style="list-style-type: none"> - Inert Waste Type 2 (including used tyres and rubber products) <p>as defined in the Landfill Definitions</p> • Waste in inert landfill sites will be covered on an ad-hoc basis when required, to at least 200mm at final landform design • Tyres must be disposed of by burial in batches of no more than 1000 whole tyres separated from each other by at least 100 mm of soil • Tyres and rubber products must be buried under a final soil cover of not less than 500 mm <p><u>Asbestos and / or clinical waste require the following:</u></p> <ul style="list-style-type: none"> • Must be covered with a dense, inert, incombustible material to a depth of at least 1m as soon as practicable after disposal • Must be recorded within 2 hours of disposal on a register held at the site showing where the asbestos and clinical waste is buried • The register is to include details that state: <ul style="list-style-type: none"> - The date - The name of person disposing of the waste 	

	Infrastructure	Operational requirements	Location
		<ul style="list-style-type: none"> - confirmation that the waste has been disposed of in accordance with this licence • Spatial records of the disposal location where more than 1 square metre of waste is buried so that the waste may be easily located • Spatial information entered in the landfill register are marked on a plan of the landfill 	
5.	WWTP3	<ul style="list-style-type: none"> • WWTP to hold no more than a total of 558 m³ per year • Record volumes of treated waste produced • Operation and maintenance undertaken in accordance with manufacturer's requirements • Maintain a minimum operating freeboard of 300 mm for the emergency overflow pond • Emergency overflow pond capacity must not exceed 2,000,000L 	Schedule 1: Figure 3
6.	Spray field	<ul style="list-style-type: none"> • Sprayfield area must be 9 ha • Sprayfield area must be managed to prevent ponding and pooling of effluent in the ground surface of the irrigation discharge area 	Schedule 1: Figure 3
7.	Pipelines	<ul style="list-style-type: none"> • Daily visual inspections of pipeline integrity and for potential leaks • Maintain and operate flow meters and pressure sensor meters 	Schedule 1: Figure 3
8.	Sludge drying beds	<ul style="list-style-type: none"> • Two layers of filter sand must be on the floor of the concrete beds • Maintain and operate the slotted under drain of the concrete beds to collect filtrate and direct it to the collection sump • Filtrate from sludge drying beds must be transferred back to the WWTP3 • Dried sludge material must be transferred offsite by a licensed waste carrier, or transported to the approved site landfill for appropriate disposal 	N/A

Emissions and discharges

Discharges to land

9. The licence holder must ensure that the emissions specified in Table 3, are discharged only at the corresponding discharge point location.

Table 3: Authorised discharge points

Emission	Discharge point location
Treated wastewater for irrigation purposes	As shown in Schedule 1, Figure 3 – Irrigation Area

Dust Management

- 10. The licence holder must monitor the weather forecasts and manage dust within the prescribed premises boundary.

Monitoring

- 11. The licence holder must ensure that:
 - (a) monthly monitoring is undertaken at least 15 days apart;
 - (b) quarterly monitoring is undertaken at least 45 days apart; and
 - (c) six monthly monitoring is undertaken at least 5 months apart.
- 12. The licence holder must maintain, in accordance with the manufacturer’s specifications, an accurate flow metering device that measures the cumulative volume of all effluent discharged from the WWTPs.

WWTP monitoring

- 13. The licence holder must monitor emissions in accordance with the requirements specified in Table 4 and record the results of all such monitoring.

Table 4: Emissions and discharge monitoring

Monitoring location	Parameter	Unit	Frequency	Averaging period	Method
WWTP2 and WWTP3	Volume	kL	Monthly	Continuous	Flow metering device
	Biochemical Oxygen Demand	mg/L	Quarterly	Spot sample	AS/NZS 5667.1 AS/NZS 5667.10
	Total Suspended Solids	mg/L			
	pH ¹	pH units			
	Total Nitrogen	mg/L			
	Total Phosphorus	mg/L			
	<i>E.coli</i>	cfu/100 mL			

Note 1: In-field non-NATA accredited analysis permitted.

- 14. All sample analysis must be undertaken by laboratories with current NATA accreditation for the relevant parameters, unless otherwise specified in condition 13.

Department of Water and Environmental Regulation

- 15.** The licence holder must conduct daily inspections of the WWTP2 and WWTP3 aboveground pipelines and the route following the placement of the underground pipeline, including the WWTP2 and WWTP3 compounds.

Records and reporting

- 16.** The licence holder must record the following information in relation to complaints received by the licence holder (whether received directly from a complainant or forwarded to them by the Department or another party) about any alleged emissions from the premises:
- (a) the name and contact details of the complainant, (if provided);
 - (b) the time and date of the complaint;
 - (c) the complete details of the complaint and any other concerns or other issues raised; and
 - (d) the complete details and dates of any action taken by the licence holder to investigate or respond to any complaint.
- 17.** The licence holder must within 28 days of each item of infrastructure required by condition 6 being constructed:
- (a) undertake an audit of their compliance with the requirements of condition 6; and
 - (b) prepare and submit to the CEO an audit report on that compliance.
- 18.** The report required by condition 17, must include as a minimum the following:
- (a) certification that the items of infrastructure or component(s) thereof, as specified in condition 6 has been constructed in accordance with the relevant requirements specified in condition 6;
 - (b) be signed by a person authorised to represent the licence holder and contains the printed name and position of that person.
- 19.** Subject to condition 18, where an item of infrastructure or component of infrastructure has been certified as not being constructed, or does not comply with corresponding requirements, or contains material defects, the licence holder must:
- (a) correct the non-complaint or defective works, prior to re-certifying in accordance with condition 18(a); or
 - (b) provide to the CEO a description of, and explanation for, any departures from the requirements specified in condition 6 that do not require rectification and do not constitute a material defect along with the audit report.
- 20.** The licence holder must:
- (a) undertake an audit of their compliance with the conditions of this licence during the preceding annual period; and
 - (b) prepare and submit to the CEO an Annual Audit Compliance Report for that period in the approved form by 30 April each year.

Department of Water and Environmental Regulation

- 21.** The licence holder must:
- (a) prepare an Environmental Report that provides information in accordance with Table 5 for the preceding two annual periods, and
 - (b) submit that Environmental Report to the CEO by 30 April 2024 and biennially thereafter.

Table 5: Environmental reporting requirements

Condition	Requirement
Summary	<ul style="list-style-type: none"> • Product produced
Condition 13 WWTP Monitoring	<p>The results to be provided to the CEO must include, but need not be limited to the following:</p> <ul style="list-style-type: none"> • Monthly cumulative volumes (in m³ or kL) treated wastewater applied to the irrigation sprayfield presented in table format • All monitoring data in a tabulated and graphical form, including the sample date • An assessment and interpretation of the data, including comparison against historical trends, loading limits, relevant guideline limits or values • Copies of laboratory sample analysis reports
Conditions 6 and 8 Landfill facilities	<ul style="list-style-type: none"> • Record of the total volumes of waste disposed of in all landfill sites • Landfill facilities figure to be updated when subsequent landfill facilities have been constructed (including previous constructed and / or existing landfill facilities)

- 22.** The licence holder must maintain accurate and auditable books including the following records, information, reports, and data required by this licence:
- (a) the calculation of fees payable in respect of this licence;
 - (b) the works conducted in accordance with condition 6 of this licence;
 - (c) any maintenance of infrastructure that is performed in the course of complying with condition 8 of this licence;
 - (d) monitoring programmes undertaken in accordance with condition 13 of this licence; and
 - (e) complaints received under condition 16 of this licence.
- 23.** The books specified under condition 22 must:
- (a) be legible;
 - (b) if amended, be amended in such a way that the original version(s) and any subsequent amendments remain legible and are capable of retrieval;
 - (c) be retained by the licence holder for the duration of the licence; and
 - (d) be available to be produced to an inspector or the CEO as required.

Definitions

In this licence, the terms in Table 6 have the meanings defined.

Table 6: Definitions

Term	Definition
ACN	means Australian Company Number.
Annual Audit Compliance Report (AACR)	means a report submitted in a format approved by the CEO (relevant guidelines and templates may be available on the Department's website).
annual period	a 12-month period commencing from 1 January until 31 December in the same year.
AS/NZS 5667.1	means the Australian Standard AS/NZS 5667.1 <i>Water Quality – Sampling – Guidance of the Design of sampling programs, sampling techniques and the preservation and handling of samplings</i> .
AS/NZS 5667.10	means the Australian Standard AS/NZS 5667.10 <i>Water Quality – Sampling – Guidance on sampling of waste waters</i> .
books	has the same meaning given to that term under the EP Act.
BOO Plant	means Build Own Operate Plant
CEO	means Chief Executive Officer of the Department. “submit to / notify the CEO” (or similar), means either: Director General Department administering the <i>Environmental Protection Act 1986</i> Locked Bag 10 Joondalup DC WA 6919 or: info@dwer.wa.gov.au
cfu/100mL	means colony forming units per 100 millilitres.
clinical waste	means waste generated by medical, nursing, dental, veterinary, pharmaceutical or other related activity which is poisonous or infectious; likely to cause injury to public health; or contains human tissue or body parts.
contaminated stormwater	means stormwater runoff that has come into contact with pollutants such as oil and grease, petroleum hydrocarbons, process wastes or materials, spills, sediment, gross solids/litter etc., and is carrying or potentially carrying such material.
Department	means the department established under section 35 of the <i>Public Sector Management Act 1994 (WA)</i> and designated as responsible for the administration of the EP Act, which includes Part V Division 3.
discharge	has the same meaning given to that term under the EP Act.
emission	has the same meaning given to that term under the EP Act.

Term	Definition
EP Act	<i>Environmental Protection Act 1986 (WA).</i>
EP Regulations	<i>Environmental Protection Regulations 1987 (WA).</i>
Inert Waste Type 1	has the meaning defined in Landfill Definitions.
Inert Waste Type 2	has the meaning defined in Landfill Definitions.
Landfill Definitions	means the document titled “Landfill Waste Classification and Waste Definitions 1996 (as amended 2019)” published by the Chief Executive officer of the Department of Water and Environmental Regulation as amended from time to time.
licence	refers to this document, which evidences the grant of a licence by the CEO under section 57 of the EP Act, subject to the specified conditions contained within.
licence holder	refers to the occupier of the premises, being the person specified on the front of the licence as the person to whom this licence has been granted.
m ³	means cubic metres.
m	means metre.
mg/L	means milligrams per litre.
mm	means millimetres.
NATA	means National Association of Testing Authorities.
NATA accredited	means in relation to the analysis of a sample that the laboratory is NATA accredited for the specified analysis at the time of analysis.
premises	refers to the premises to which this licence applies, as specified at the front of this licence and as shown on the premises map (Figure 1) in Schedule 1 to this licence.
prescribed premises	has the same meaning given to that term under the EP Act.
Putrescible	has the meaning defined in the Landfill Definitions.
Special Waste Type 1	has the meaning defined in the Landfill Definitions.
Special Waste Type 2	has the meaning defined in the Landfill Definitions.
Tipping area	means the area of a landfill site where waste is currently being brought to the site is being deposited.
waste	has the same meaning given to that term under the EP Act.
WWTP	means Wastewater Treatment Plant.
WWTP2	means Wastewater Treatment Plant 2 – the wastewater treatment plant 1200EP facility at the eastern end of the premises.

Department of Water and Environmental Regulation

Term	Definition
WWTP3	means Wastewater Treatment Plant 3 – the wastewater treatment plant 600EP facility to the west of WWTP2.

END OF CONDITIONS

Department of Water and Environmental Regulation Schedule 1: Maps

Premises map

The boundary of the prescribed premises is shown in the map below ().

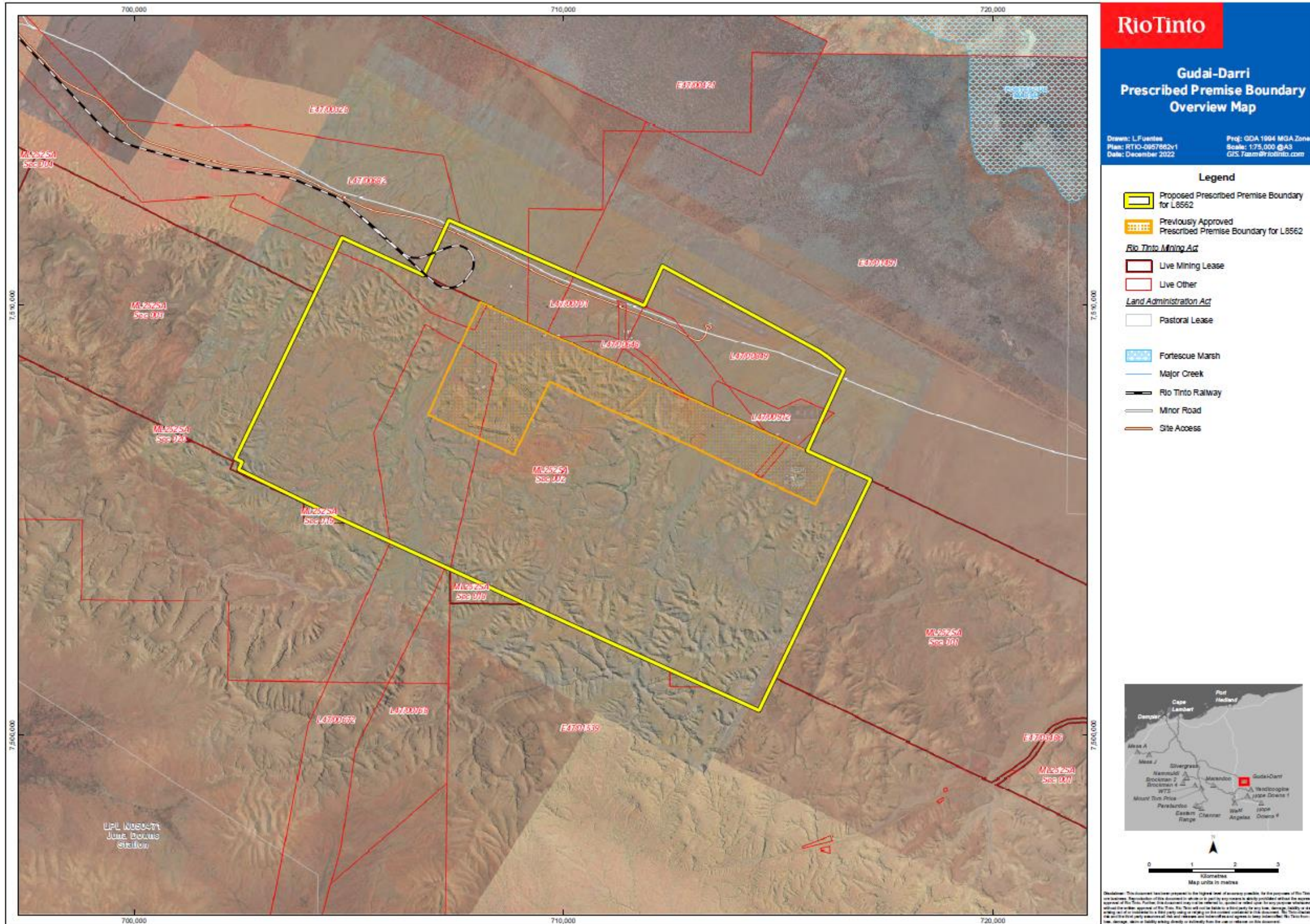


Figure 1 : Map of the boundary of the prescribed premises

Department of Water and Environmental Regulation
Infrastructure

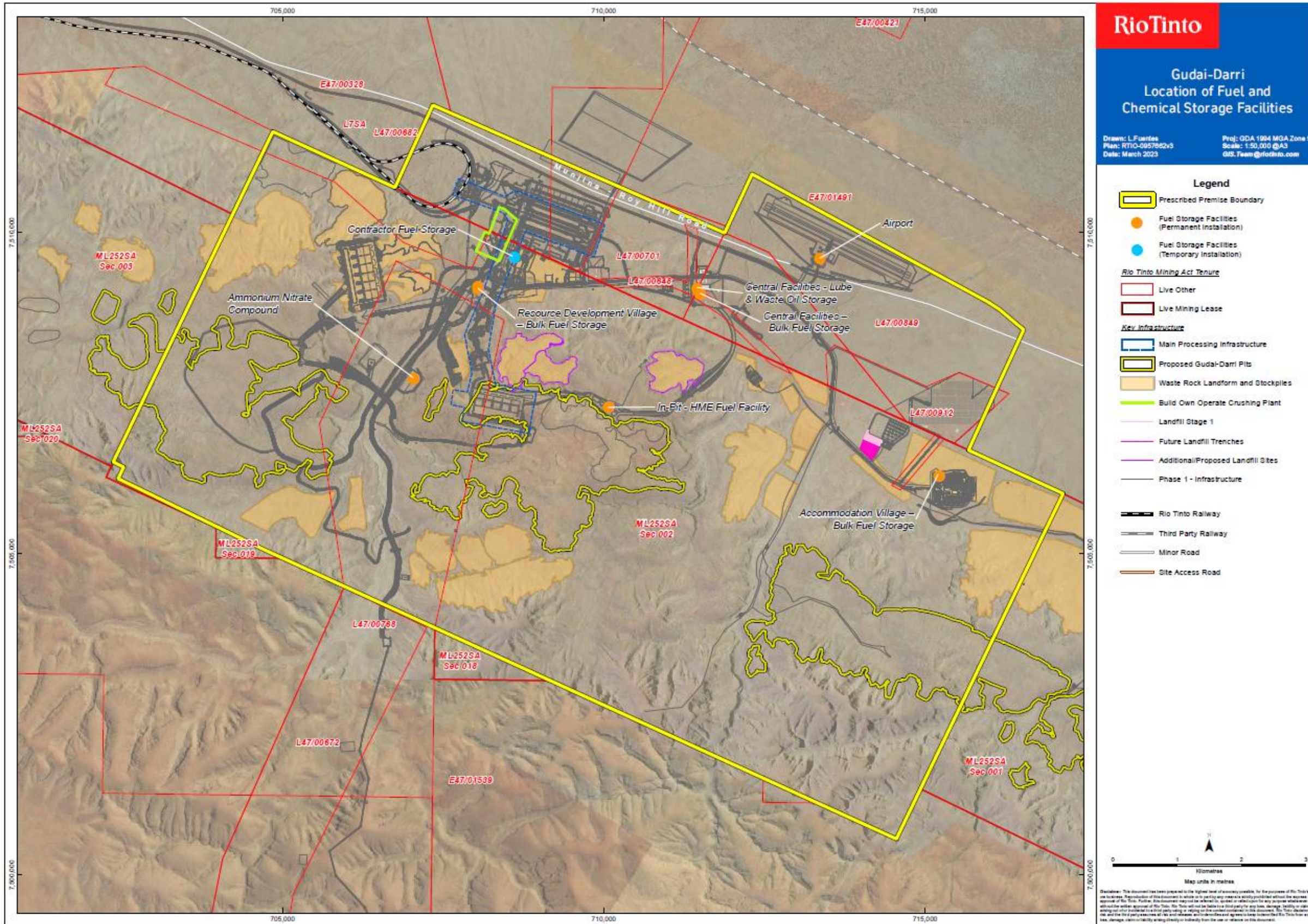


Figure 2: Prescribed premises site layout

Department of Water and Environmental Regulation
Emissions and monitoring locations

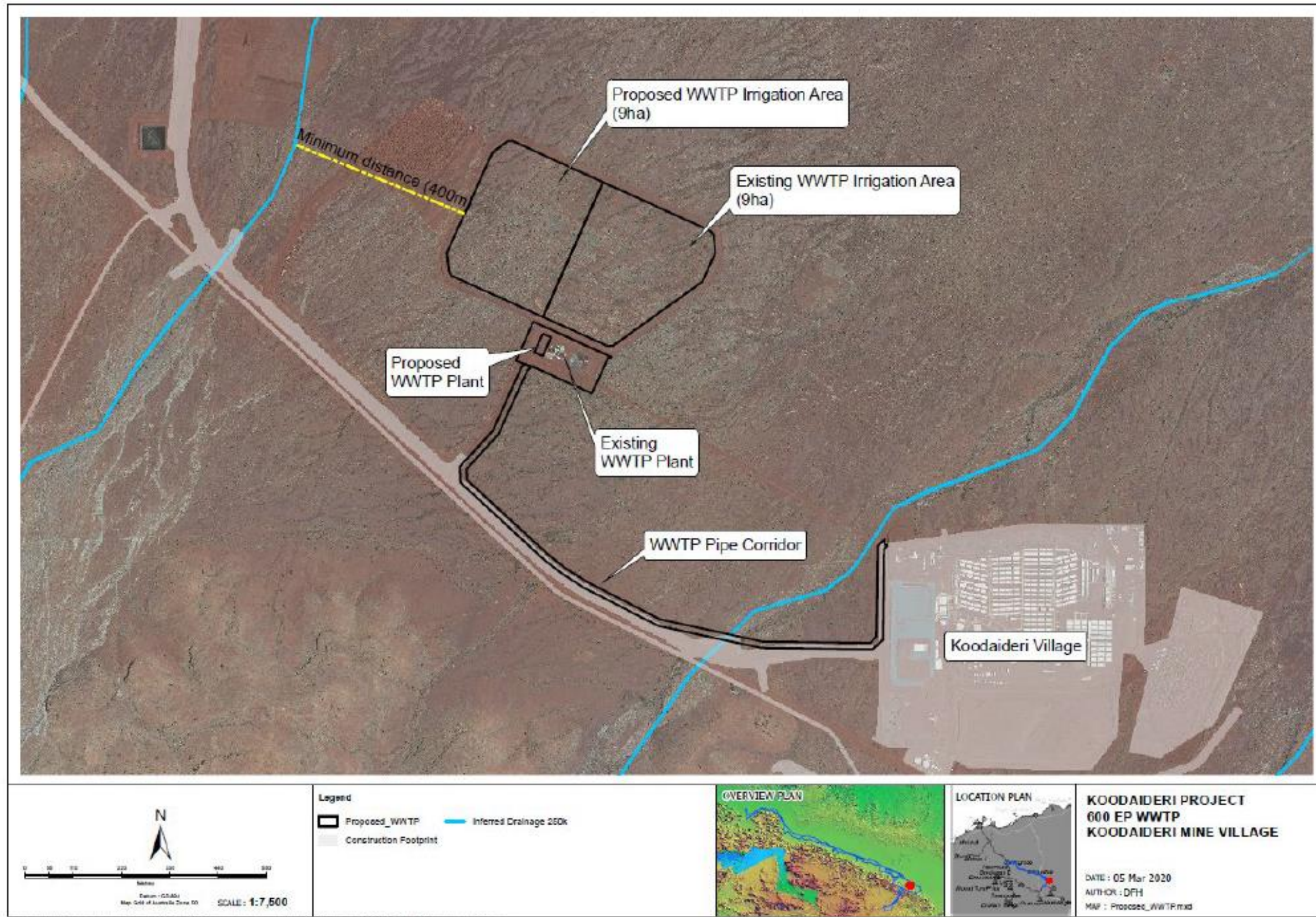


Figure 3: WWTPs and spray field locations

Schedule 2: Premises boundary

The corners of the premises boundary are the coordinates listed in Table 7.

Table 7: Premises boundary coordinates (GDA942020) Zone 50

Point	Easting	Northing
1.	715673.4301	7506608.9226
2.	717148.0262	7505934.1799
3.	714549.0598	7500559.5939
4.	702434.1087	7506167.5324
5.	702520.6405	7506346.9259
6.	702360.3166	7506424.3301
7.	704840.7078	7511565.7636
8.	706743.7415	7510695.1208
9.	707331.7609	7511974.3704
10.	711876.9197	7509986.8950
11.	712302.6032	7510905.8079
12.	715972.8944	7508918.6624
13.	716161.2130	7508793.2879
14.	716532.9274	7508485.1007