



Works Approval

Works approval number W6960/2024/1
Works approval holder Hayes Metals Pty Ltd
ACN 677 825 768

Registered business address 47 Hope Valley Road
NAVAL BASE WA 6165

DWER file number DER2024/000417

Duration 27/11/2024 to 26/11/2029
Date of issue 27/11/2024

Premises details Hayes Recycling
47 Hope Valley Road
NAVAL BASE WA 6165

Legal description -
Lot 1 on Diagram 52222
Certificate of Title Volume 1498 Folio 324
As defined by the coordinates in Schedule 2

Prescribed premises category description (Schedule 1, <i>Environmental Protection Regulations 1987</i>)	Assessed design capacity
Category 47: Scrap metal recovery: premises (other than premises within category 45) on which metal scrap is fragmented or melted, including premises on which lead acid batteries are reprocessed.	65,000 tonnes per annual period
Category 61A: premises (other than premises within category 67A) on which solid waste produced on other premises is stored, reprocessed, treated or discharged onto land.	
Category 62: Solid waste depot: premises on which waste is stored, pending final disposal or re-use.	

This works approval is granted to the works approval holder, subject to the attached conditions, on 27 November 2024, by:

Grace Heydon
MANAGER, WASTE INDUSTRIES
an officer delegated under section 20 of the *Environmental Protection Act 1986* (WA)

Works approval history

Date	Reference number	Summary of changes
27/11/2024	W6907/2024/1	Works approval granted.

Interpretation

In this works approval:

- (a) the words 'including', 'includes' and 'include' in conditions mean "including but not limited to", and similar, as appropriate;
- (b) where any word or phrase is given a defined meaning, any other part of speech or other grammatical form of that word or phrase has a corresponding meaning;
- (c) where tables are used in a condition, each row in a table constitutes a separate condition;
- (d) any reference to an Australian or other standard, guideline, or code of practice in this works approval:
 - (i) if dated, refers to that particular version; and
 - (ii) if not dated, refers to the latest version and therefore may be subject to change over time;
- (e) unless specified otherwise, any reference to a section of an Act refers to that section of the EP Act; and
- (f) unless specified otherwise, all definitions are in accordance with the EP Act.

NOTE: This works approval requires specific conditions to be met but does not provide any implied authorisation for other emissions, discharges, or activities not specified in this works approval.

Works approval conditions

The works approval holder must ensure that the following conditions are complied with:

Construction phase

Infrastructure and equipment

1. The works approval holder must:
 - (a) construct and/or install the infrastructure and/or equipment;
 - (b) in accordance with the corresponding design and construction / installation requirements; and
 - (c) at the corresponding infrastructure location as set out in Table 1.

Table 1: Design and construction / installation requirements

	Infrastructure	Design and construction / installation requirements	Infrastructure location
1.	Processing warehouse	<p>The following modifications and installation activities are to be undertaken:</p> <ul style="list-style-type: none"> - Installation of a roller door (eastern side) facing the external walls; - Cut out (x2) in external wall (facing east) for end points of conveyor to be fitted; - Modify existing larger roller door at south external wall; - Install smaller roller door (x1) at south external wall; - Construct and install enclosed picking lines; - Construct additional concrete pads under SURF recycling plant to install points in flooring; and - Installation of temporary generator in southwest corner. 	Schedule 1 Figure 2
2.	SURF recycling plant	<p>The SURF recycling plant must be installed in accordance with manufacturers recommendations and must consist of all components as depicted in Schedule 1, Figure 3, including the following key components;</p> <ul style="list-style-type: none"> - stripping - sorting - fragmentising; and - granulation. <p>Misting system must be installed within the hood of the fragmentiser.</p>	Schedule 1 Figure 2

	Infrastructure	Design and construction / installation requirements	Infrastructure location
3.	Noise barrier	Noise / vibration mitigation unit to be installed so as to enclose the fragmentiser.	Schedule 1 Figure 2
4.	Sea containers	Placed along the south side boundary of the premises.	Schedule 1 Figure 2
5.	Firefighting infrastructure	<p>Fire hydrant system must be installed at the premises that meets GN-04 and AS 2419 requirements.</p> <p>Fire hose reels installed throughout the buildings must meet AS 2441 requirements.</p> <p>Additional portable fire extinguishers (DCP) must be installed on the forklifts and any mobile equipment.</p> <p>Portable fire extinguishers must be installed throughout the building as appropriate within any specific high-risk areas.</p> <p>Install exit signage throughout the buildings in accordance with BCA Part E4 and AS 2293.1:2018.</p>	N/A

Compliance reporting

2. The works approval holder must within 30 days of an item of infrastructure or equipment required by condition 1 being constructed and/or installed:
 - (a) undertake an audit of their compliance with the requirements of condition 1; and
 - (b) prepare and submit to the CEO an Environmental Compliance Report on that compliance.
3. The Environmental Compliance Report required by condition 2, must include as a minimum the following:
 - (a) certification by a suitably qualified person that the items of infrastructure or component(s) thereof, as specified in condition 1, have been constructed in accordance with the relevant requirements specified in condition 1;
 - (b) a detailed site plan for each item of infrastructure or component of infrastructure specified in condition 1;
 - (c) Evidence of consultation with the Department of Fire and Emergency Services confirming the adequacy of fire management infrastructure and systems for the volumes of combustible material proposed to be processed and stored onsite; and
 - (d) be signed by a person authorised to represent the works approval holder and contains the printed name and position of that person.

Time limited operations phase

Commencement and duration

4. The works approval holder may only commence time limited operations for an item of infrastructure identified in condition 1 where the Environmental Compliance Report as required by condition 2 has been submitted by the works approval holder for that item of infrastructure; and
5. The works approval holder may conduct time limited operations for an item of infrastructure specified in condition 6:
 - (a). for a period not exceeding 180 calendar days from the day the works approval holder meets the requirements of condition 4 for that item of infrastructure; or
 - (b). until such time as a licence for that item of infrastructure is granted in accordance with Part V of the *Environmental Protection Act 1986*, if one is granted before the end of the period specified in condition 5(a).

Infrastructure and equipment

6. During time limited operations, the works approval holder must ensure that the premises infrastructure and equipment listed in Table 2 and located at the corresponding infrastructure location is maintained and operated in accordance with the corresponding operational requirement set out in Table 2.

Table 2: Infrastructure and equipment requirements during time limited operations

	Site infrastructure and equipment	Operational requirement	Infrastructure location
1	Equipment used for processing flexible and rigid pipes (including mechanical equipment used for stripping, sorting, fragmentizing, granulation)	SURF recycling plant to be housed and operated inside the processing warehouse except the conveyor end points and quality assurance/sorting booth; Misting unit to be deployed when the fragmentiser is operational; and Must be operated in a manner that ensures that noise emissions comply with the <i>Environmental Protection (Noise) Regulations 1997</i> .	Schedule 1 Figure 3
2	Oxy cutting area and equipment	Must be positioned on a hardstand area maintained free of leaks and defects	Schedule 1 Figure 3
3	Stormwater Infrastructure	All concrete hardstands to be maintained free of deficiencies; and All drains and pipe to be kept free of waste at all times. Bunding, drains or other infrastructure capable of retaining all fire-fighting waters and debris on the premises.	Schedule 1 Figure 3
4	Premises external carpark, yard and driveway	Must not be used to store any waste materials. Must be sloped or the perimeter	Schedule 1 Figure 3

		sufficiently banded, to contain surface run-off and firewater generated within the premises boundary.	
5	Fire management, prevention equipment and containment of firewater	<p>Ensure all on site fire management and prevention equipment are subject to regular and ongoing maintenance, in accordance with AS 1851.</p> <p>As per AS 3745, conduct regular ongoing fire warden training and yearly evacuation drills (proposed control measure will be incorporated into the works approval as regulatory control).</p> <p>Contingency arrangements must exist for the removal of firewater, in excess of the containment capacity, by a carrier licensed under the <i>Environmental Protection (Controlled Waste) Regulations 2004</i> within 72 hours of the extinguishment of a fire at the premises, to ensure firewater does not discharge to the environment.</p>	Schedule 1 Figure 3
6	Mobile picking lines, fork hoist, skip bins, material handlers, excavator, loader and sea containers, various tools and ancillary equipment.	None specified	N/A

Waste acceptance

7. The works holder must only accept onto the premises waste of a waste type that;
- (a). does not exceed the corresponding rate at which waste is received, and
 - (b). meets the corresponding acceptance specification,
- as set out in Table 3.

Table 3: Types of waste authorised to be accepted onto the premises

Waste type	Rate at which waste is received	Acceptance specifications
Onshore and subsea scrap metal and used pipes	Combined total of 65,000 tonnes per annual period	<p>Limited to metal rigid, flexible pipes and associated subsea infrastructure.</p> <p>Waste must only be accepted to the premises where it has been cleaned and is free of hazardous contaminants.</p> <p>A 'Declaration of Clearance' must be provided with each load of accepted waste confirming that it is free of hazardous contaminants.</p>

8. The works approval holder must ensure that where waste does not meet the waste acceptance criteria set out in condition 7, it is removed from the premises by the delivery vehicle or, where that is not possible, stored in a quarantined storage area or container and removed to an appropriately authorised facility as soon as practicable.

Waste processing

9. The works approval holder must ensure that the waste types specified in Table 3 are only subjected to the corresponding process(es), subject to the corresponding process limits and/or specifications.

Table 4: Waste processing

Waste type	Process(es)	Process limits and/or specifications
Metal (flexible and rigid pipes)	Receipt, handling, sorting, flame cutting, stripping, sorting, fragmentizing, granulation and storage prior to sale or removal offsite.	<p>Acceptance Requirement:</p> <ul style="list-style-type: none"> • Any item that are suspected of containing hazardous materials must be removed prior to further processing; • All sea containers and trucks arriving at the premises must be scanned using a handheld Geiger counter. • If the Residual NORM scale is detected at the side of the truck whilst the load is still on the truck at greater than 5 µSv/hr, the load must not be accepted at the premises. <p>Storage requirements:</p> <ul style="list-style-type: none"> • Unloading must occur in the designated quarantine area; • Exclusion zone of 12 m diameter from the slew axis of the materials handler must be established; • Pipes will be temporarily stored to no more than 10m high on the sealed hardstand in designated marked-out bays in the storage area and away from the drainage sumps; • End fittings must be removed and collected in skip bins for recycling; and • Metals must be cut from the pipes with an oxy torch in the designated “hot works” area. <p>Processing requirements:</p> <ul style="list-style-type: none"> • The pipes must be processed using a range of fragmentising technologies (including stripping, materials separation technologies, sortation, granulation technologies) to remove metals and polymers. The processing system must comprise of a series of units designed to remove the specific layers of the flexibles. • No chemicals, hazardous or dangerous goods (DGs) must be used in the sorting and grading processes.

Emissions and discharges

10. The works approval holder must ensure that:
 - (a). all reasonable and practicable measures are taken to ensure that no windblown waste escapes from the premises; and
 - (b). any windblown waste is collected on at least a weekly basis and returned to appropriately contained.
11. The works approval holder must ensure that no visible dust generated from the primary activities crosses the boundary of the premises.
12. The works approval holder must ensure that noise generating activities at the premises only occur Monday to Friday between the hours of 06:00 and 19:00, and on Saturday between the hours of 07:00 and 12:00.
13. The works approval holder must ensure that all material used for the recovery, removal, and/or disposal of environmentally hazardous materials is stored in an impermeable container prior to disposal at an appropriately authorised facility.
14. The works approval holder must take all reasonable and practicable measures to prevent stormwater run-off becoming contaminated by the activities and operations undertaken at the premises.

Monitoring during time limited operations

The works approval holder must record the total amount of waste accepted onto and removed from the premises, for each waste type listed in

Table 5, in the corresponding unit, and for each corresponding time period, as set out in

15. Table 5.

Table 5: Waste accepted onto the premises

Waste type	Unit	Time period	Frequency
Metal (flexible and rigid pipes)	m ³ or tonnes	Annual period	Each load arriving at the premises
Scrap metal	m ³ or tonnes		Each load leaving or rejected from the premises
Recovered materials including plastics			
Non-conforming waste types			

Fire and emergency management

16. The works approval holder must ensure that no waste is burnt on the premises.
17. The works approval holder must immediately notify the CEO of:
 - (a) any fire on the premises; and/or
 - (b) any accident, malfunction, or emergency which results or could result in the discharge of fire-fighting washwater or other wastes from the premises.
18. The works approval holder must prepare and implement a Fire and Emergency

Management Plan that is consistent with Australian Standard AS3745. The plan must include, but is not limited to:

- (a) notification procedures for fire and major spill incidents;
- (b) how fires will be prevented, detected, responded to, suppressed, contained and controlled for all approved activities addressing all waste types and for all stages of the waste handling, sorting and processing;
- (c) in the event of a fire occurring at the premises, how impacts to the environment and human health will be mitigated;
- (d) how staff will be trained in fire and emergency response on an ongoing, annual basis;
- (e) details on the firefighting equipment in place and/or accessible at the premises and the fire response capabilities and responsibilities;
- (f) a premises map displayed at the front of the premises depicting an after-hours contact details, plus the location and layout of:
 - (i) fire hose reels, hydrants and isolation points;
 - (ii) electrical isolation points;
 - (iii) sub-surface drainage infrastructure, including details on flow direction and off-site discharge locations (if applicable);
 - (iv) system shutdown points; and
 - (v) fire response access points to the premises;
- (g) hazmat manifest displayed at front of the premises;
- (h) how fire water can be prevented from draining into stormwater drains.

Compliance reporting

- 19.** The works approval holder must submit to the CEO a report on the time limited operations within 30 calendar days of the completion date of time limited operations or 30 calendar days before the expiration date of the works approval, whichever is the sooner.
- 20.** The works approval holder must ensure the report required by condition 19 includes the following:
 - (a). a summary of monitoring results obtained during time limited operations under condition 15;
 - (b). a review of performance and compliance against the conditions of the works approval;
 - (c). Evidence of consultation with the Department of Fire and Emergency Services confirming the adequacy of the Fire and Emergency Management Plan; and
 - (d). where the manufacturer's design specifications and the conditions of this works approval have not been met, what measures will the works approval holder take to meet them, and what timeframes will be required to implement those measures.

Records and reporting (general)

- 21.** The works approval holder must record the following information in relation to complaints received by the works approval holder (whether received directly from a complainant or forwarded to them by the Department or another party) about any

alleged emissions from the premises:

- (a) the name and contact details of the complainant, (if provided);
- (b) the time and date of the complaint;
- (c) the complete details of the complaint and any other concerns or other issues raised; and
- (d) the complete details and dates of any action taken by the works approval holder to investigate or respond to any complaint.

22. The works approval holder must maintain accurate and auditable books including the following records, information, reports, and data required by this works approval:

- (a) the works conducted in accordance with condition 1;
- (b) any maintenance of infrastructure that is performed in the course of complying with condition 6;
- (c) monitoring programmes undertaken in accordance with condition 15; and
- (d) complaints received under condition 21.

23. The books specified under condition 22 must:

- (a) be legible;
- (b) if amended, be amended in such a way that the original version(s) and any subsequent amendments remain legible and are capable of retrieval;
- (c) be retained by the works approval holder for the duration of the works approval; and
- (d) be available to be produced to an inspector or the CEO as required.

Definitions

In this works approval, the terms in Table 6 have the meanings defined.

Table 6: Definitions

Term	Definition
annual period	a 12 month period commencing from 1 January until 31 December of the same year.
Australian Standard AS 1851	means Standards Australia AS 1851.2012 <i>Routine service of fire protection systems and equipment</i> .
Australian Standard AS 2419.1	means Standards Australia AS 2419.1 <i>Fire hydrant installations Part 1: System design, installation and commissioning</i>
AS/NZS 5667.1	means the Australian Standard AS/NZS 5667.1 (R2016) <i>Water quality – sampling – guidance of the design of sampling programs, sampling techniques and the preservation and handling of samples, as amended from time to time</i> .
AS3745	<i>means the Australian Standard AS3745 Planning for Emergencies in Facilities.</i>
books	has the same meaning given to that term under the EP Act.
CEO	means Chief Executive Officer. CEO for the purposes of notification means: Director General Department administering the <i>Environmental Protection Act 1986</i> Locked Bag 10 Joondalup DC WA 6919 info@dwer.wa.gov.au
Department	means the department established under section 35 of the <i>Public Sector Management Act 1994</i> and designated as responsible for the administration of Part V Division 3 of the EP Act.
discharge	has the same meaning given to that term under the EP Act.
emission	has the same meaning given to that term under the EP Act.
Environmental Compliance Report	means a report to satisfy the CEO that the conditioned infrastructure and/or equipment has been constructed and/or installed in accordance with the works approval.
EP Act	<i>Environmental Protection Act 1986 (WA)</i> .
EP Regulations	<i>Environmental Protection Regulations 1987 (WA)</i> .
Fire and Emergency	means a Fire and Emergency Management Plan that meets the

Term	Definition
Management Plan	requirements specified in condition 18 of this approval.
Guidance Note GN 04	Means Fire Prevention and Management in a Recycling Facility.
NATA	means the National Association of Testing Authorities
NATA accredited	means in relation to the analysis of a sample, that the laboratory is NATA accredited for the specified analysis at the time of the analysis.
premises	the premises to which this works approval applies, as specified at the front of this works approval and as shown on the premises map (Figure 1) in Schedule 1 to this works approval.
prescribed premises	has the same meaning given to that term under the EP Act.
suitably qualified person	means a person who: <ul style="list-style-type: none"> (a) holds a Bachelor of Engineering degree recognised by the Institute of Engineers; and (b) has a minimum of five years of experience working in the field of engineering; or is otherwise approved in writing by the CEO to act in this capacity.
time limited operations	refers to the operation of the infrastructure and equipment identified under this works approval that is authorised for that purpose, subject to the relevant conditions.
waste	has the same meaning given to that term under the EP Act.
works approval	refers to this document, which evidences the grant of the works approval by the CEO under section 54 of the EP Act, subject to the conditions.
works approval holder	refers to the occupier of the premises being the person to whom this works approval has been granted, as specified at the front of this works approval.

END OF CONDITIONS

Schedule 1: Maps

Premises map

The boundary of the prescribed premises is shown in the map below (Figure 1).

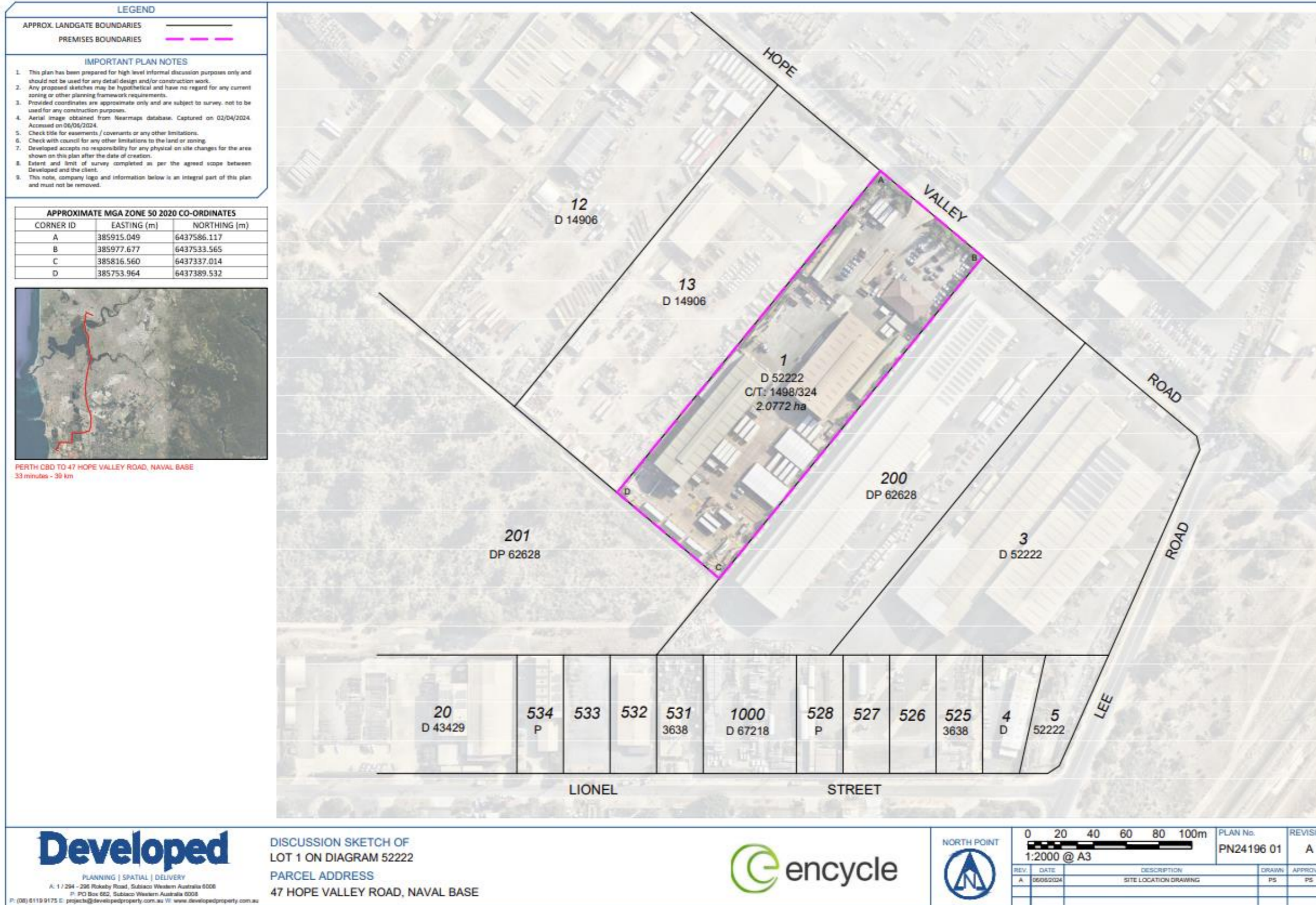


Figure 1: Map of the boundary of the prescribed premises

W6960/2024/1

IR-T05 Works approval template (v6.0) (September 2022)

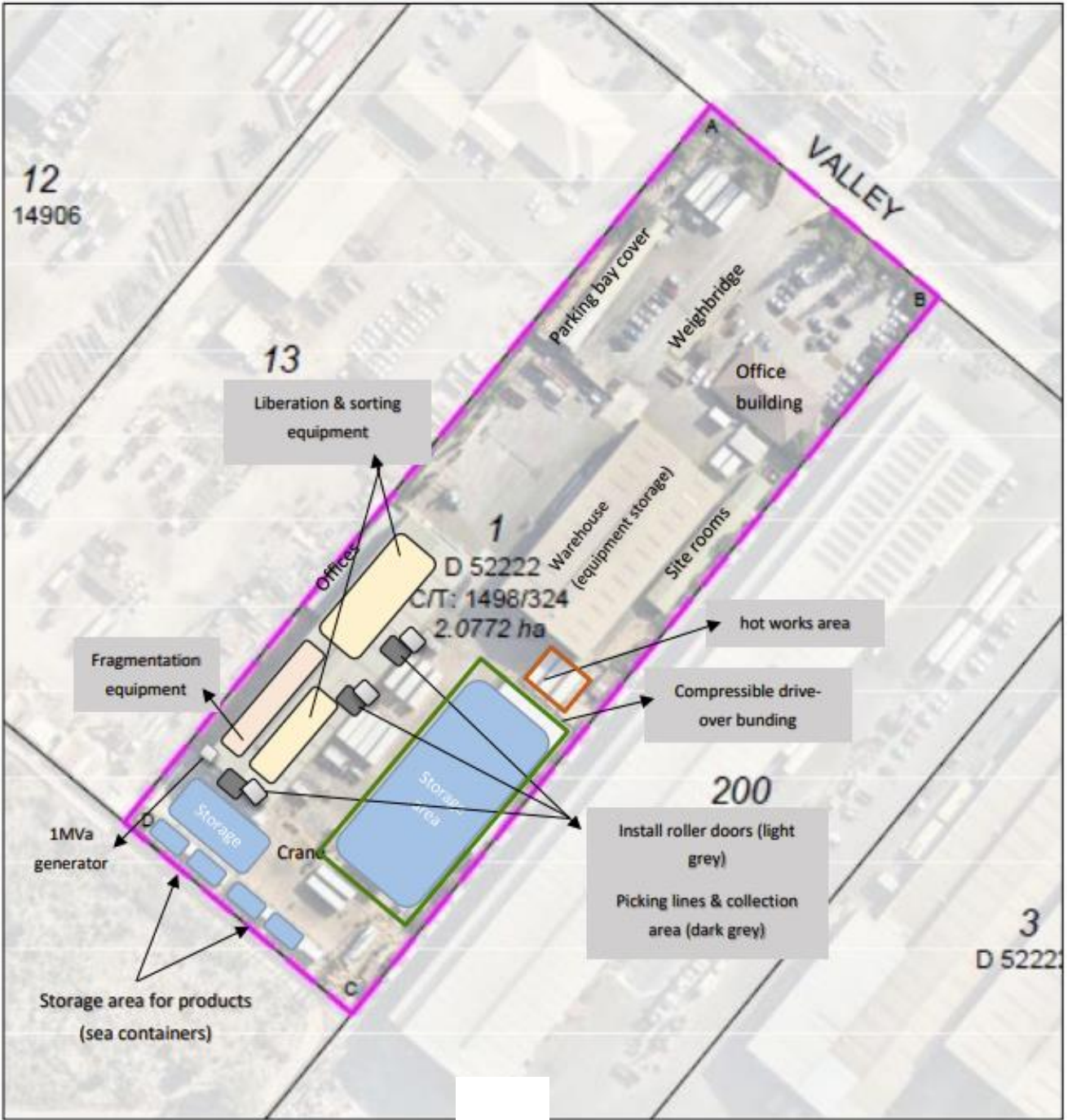


Figure 2: Site plan