



Works approval number	W6947/2024/1
Works approval holder	Veolia Recycling & Recovery Pty Ltd
ACN	002 902 650
Registered business address	Level 4, 65 Pirrama Road, PYRMONT NSW 2009
DWER file number	DWERVT15937
Duration	10/01/2025 to 09/01/2030
Date of issue	10 January 2025
Premises details	Landsdale Resource Recovery Park 15 Attwell Street, LANDSDALE WA 6065 Legal description - Lot 79 on Diagram 57260

Prescribed premises category description (Schedule 1, <i>Environmental Protection Regulations 1987</i>)	Assessed production / design capacity
Category 62: Solid waste depot: premises on which waste is stored or sorted, pending final disposal or re-use, other than in the course of operating: (a). a refund point (as defined in the Waste Avoidance and Resource Recovery Act 2007 section 47C(1)) (a refund point); or (b). a facility or other place (an aggregation point) for the aggregation of containers that have been returned to refund points until those containers are accepted for processing or disposal.	165,000 tonnes per annual period

This works approval is granted to the works approval holder, subject to the attached conditions, on 10 January 2025, by:

Adam Green
A/MANAGER, WASTE INDUSTRIES
an officer delegated under section 20 of the *Environmental Protection Act 1986* (WA)

Works approval history

Date	Reference number	Summary of changes
10/01/25	W6947/2024/1	Works approval granted.

Interpretation

In this works approval:

- (a) the words 'including', 'includes' and 'include' in conditions mean "including but not limited to", and similar, as appropriate;
- (b) where any word or phrase is given a defined meaning, any other part of speech or other grammatical form of that word or phrase has a corresponding meaning;
- (c) where tables are used in a condition, each row in a table constitutes a separate condition;
- (d) any reference to an Australian or other standard, guideline, or code of practice in this works approval:
 - (i) if dated, refers to that particular version; and
 - (ii) if not dated, refers to the latest version and therefore may be subject to change over time;
- (e) unless specified otherwise, any reference to a section of an Act refers to that section of the EP Act; and
- (f) unless specified otherwise, all definitions are in accordance with the EP Act.

NOTE: This works approval requires specific conditions to be met but does not provide any implied authorisation for other emissions, discharges, or activities not specified in this works approval.

Works approval conditions

The works approval holder must ensure that the following conditions are complied with:

Construction phase

Infrastructure and equipment

1. The works approval holder must:
 - (a) construct and/or install the infrastructure and/or equipment;
 - (b) in accordance with the corresponding design and construction / installation requirements; and
 - (c) at the corresponding infrastructure location as set out in Table 1.

Table 1: Design and construction / installation requirements

	Infrastructure	Design and construction / installation requirements	Infrastructure location
1.	Transfer station extension	<p>Must be constructed in accordance with Schedule 1, Figure 2 and Figure 3.</p> <p>South extension of the existing shed to be 19.1 m x 36.46 m with a washdown water sump and a firewater runoff sump.</p> <p>North extension of the existing transfer station to be 30.5 m x 36.46 m with a washdown water sump and a firewater runoff sump.</p> <p>Removal and replacement of existing concrete floor to drain the floor to sealed sumps.</p> <p>Each washdown water sump must be capable of storing 3 m³ of leachate and washdown water.</p> <p>Firewater runoff sump inlets must be located 50 mm above the washdown water sump inlet levels.</p> <p>Northern firewater collection reservoir must be capable of storing 160 m³ of firewater runoff.</p> <p>Southern firewater collection reservoir must be capable of storing 250 m³ of firewater runoff.</p> <p>Hardstand to achieve a coefficient of permeability of 1x10⁻⁹ m/s or less.</p> <p>Hardstand must be able to support the load of material and machinery to be used on the hardstand without its integrity being compromised.</p> <p>All existing and new floor areas, access ramp, drive-through access ways and loadout bay must be enclosed.</p> <p>Must be equipped with fast acting doors;</p> <ul style="list-style-type: none"> • Door 1: collection truck entrance north-east corner of the building (eastern facade); • Door 2: northern entrance of the loading tunnel; 	Schedule 1; Figure 2 and Figure 3

	Infrastructure	Design and construction / installation requirements	Infrastructure location
		<ul style="list-style-type: none"> • Door 3: southern exit of the loading tunnel; and • Door 4: exit of the collection trucks (southern facade). 	
2.	Air control system	<p>Air control system must be designed and constructed in accordance with Schedule 1, Figures 2 and 3.</p> <p>Weighted air louvres with waterproof grills and barometric non-return dampers must be installed to control air intake and maintain the negative air pressure within the building (minimum -5 Pa)</p> <p>Air venting stack/s must be 2.5 times the height of the building (approximately 18 m high)</p> <p>Air extraction ducts in the enclosed building ceiling and over southern exit door.</p> <p>Dust extraction system must be installed and incorporating particulate filters.</p> <p>Mechanical ventilation units with multiple extraction fans must be installed to ensure continuous operation of the air extraction system in the event of fan failure.</p> <p>Install electronic (SCADA) management and monitoring system must be installed.</p>	Schedule 1; Figure 2 and Figure 3

Compliance reporting

2. The works approval holder must within 30 calendar days of an item of infrastructure or equipment required by condition 1 being constructed and/or installed:
 - (a) undertake an audit of their compliance with the requirements of condition 1; and
 - (b) prepare and submit to the CEO an Environmental Compliance Report on that compliance.
3. The Environmental Compliance Report required by condition 2, must include as a minimum the following:
 - (a) certification by a suitably qualified person that the items of infrastructure or component(s) thereof, as specified in condition 1, have been constructed in accordance with the relevant requirements specified in condition 1;
 - (b) as constructed plans and a detailed site plan for each item of infrastructure or component of infrastructure specified in condition 1; and
 - (c) be signed by a person authorised to represent the works approval holder and contains the printed name and position of that person.

Time limited operations phase

Commencement and duration

4. The works approval holder may only commence time limited operations for an item of infrastructure identified in condition 1 where the Environmental Compliance Report as required by condition 2 has been submitted by the works approval holder for that

item of infrastructure.

5. The works approval holder may conduct time limited operations for an item of infrastructure specified in condition 6:
 - (a). for a period not exceeding 180 calendar days from the day the works approval holder meets the requirements of condition 4 for that item of infrastructure; or
 - (b). until such time as a licence for that item of infrastructure is granted in accordance with Part V of the Environmental Protection Act 1986, if one is granted before the end of the period specified in condition 5(a).

Time limited operations requirements

6. During time limited operations, the works approval holder must ensure that the premises infrastructure and equipment listed in Table 2 and located at the corresponding infrastructure location is maintained and operated in accordance with the corresponding operational requirement set out in Table 2.

Table 2: Infrastructure and equipment requirements during time limited operations

	Site infrastructure and equipment	Operational requirement	Infrastructure location
1	Transfer station	<p>All concrete hardstands and sumps to be maintained free from cracks, leaks or defects.</p> <p>Must be bunded to contain leachate and firewater within the hardstand area.</p> <p>Leachate must not pool on hardstand.</p> <p>Washdown sump must be not overflowed to tipping floor.</p> <p>Firewater sumps must be maintained in an empty state under normal operating conditions.</p> <p>Transfer station must be maintained under negative pressure (-5 pa).</p> <p>Transfer station trailer loading area must be fully enclosed while the front trailer is being filled.</p> <p>Interlocked rapid opening and closing roller doors on all vehicle entrances and exits to the building to ensure that two opposite doors are not open at the same time.</p> <p>Maintain a manual override for the roller doors that can be operated in the event of power outage, or when required.</p>	Schedule 1; Figure 2
2	Air control system	<p>The on-site air control system and its associated equipment must be maintained in good working order.</p> <p>Air control system must maintain 3 air exchanges per hour during operating hours and 1 air exchange per hour outside of operating hours.</p> <p>Dust extraction system must be maintained in an operating state at all times.</p> <p>All extracted air must be emitted from the stack/s</p> <p>Maintain air exit velocity from the stack of 20 m/s;</p>	Schedule 1; Figure 2, 3

Waste acceptance

7. The works approval holder must only accept onto the premises waste of a waste type that,
- does not exceed the corresponding rate at which waste is received, and
 - meets the corresponding acceptance specification set out in Table 3.

Table 3: Waste acceptance

Waste type	Rate at which waste is received	Acceptance specifications
Food organic and garden organics (FOGO) waste	30,000 tonnes per annual period	<ul style="list-style-type: none"> Accepted from municipal kerbside collections, industrial and commercial sources only. Accepted and stored within the Waste Transfer Station only.

8. The works approval holder must ensure that where waste does not meet the waste acceptance criteria set out in Condition 7 it is removed from the Premises by the delivery vehicle or, where that is not possible, stored in a quarantined storage area or container and removed to an appropriately authorised facility within 48 hours of receipt.

Monitoring during time limited operations

9. The works approval holder must record the total amount of waste accepted and removed from the premises, for each waste type listed in Table 4, in the corresponding unit, and for each corresponding time period, as set out in Table 4.

Table 4: Waste accepted and removed from the premises

Waste type	Unit	Time period
Food organics and garden organics (FOGO)	tonnes	During time limited operations

10. The works approval holder must retain the services of a suitably qualified odour panelist to:
- Plan and implement a minimum of three odour field assessments (OFAs) which follow the plume measurement methodology as specified in the in accordance with the DWER Odour Emissions Guideline *DWER Guideline: Odour Emissions*. OFAs are to be undertaken:
 - with the prime objective of characterising odour plume extents in the directions of receptors which are most likely to be impacted by odour;
 - during meteorological and operational conditions most likely to cause impacts at these receptors;
 - over the time limited operations period, with each OFA conducted at least two weeks apart; and
 - compile and submit to the works approval holder within six weeks of completion of the final OFA field campaign, an OFA report in accordance with condition 11.
11. An OFA report prepared pursuant to condition 10 is to include:
- the objective of the assessment;

- (b) a description of the measurement strategy, measurement conditions and the odour field survey standards that were followed;
- (c) the following details for each single measurement:
 - (i) odour intensity levels and odour characters;
 - (ii) location and time;
 - (iii) field survey odour panelist identification; and
 - (iv) details of waste storage volumes held and/or transferred through the site during the assessment period.
- (d) the following meteorological measurements as recorded during the measurement cycle:
 - (i) wind speed (metres per second);
 - (ii) wind direction;
 - (iii) cloud cover estimate; and
 - (iv) temperature;
- (e) map(s) depicting the assessment area, odour sources at the premises and other potential odour sources (if relevant);
- (f) a graphical summary of field survey results showing the recorded odour intensity levels either as a percentage of total observations using pie charts if the stationary plume method was used or as coloured dot points if the dynamic plume method was used that will be superimposed at each point assessed on a map of the survey area;
- (g) any deviations from the conditions targeted in the OFA strategy and those occurring during the measurement (conclusions should reflect the influence of such deviations on the results);
- (h) detailed analysis, interpretation and conclusions with regard to the objectives of the assessment; and
- (i) an interpretive summary and assessment of the results against previous monitoring results.

Compliance reporting

- 12.** The works approval holder must submit to the CEO a report on the time limited operations within 60 calendar days of the completion date of time limited operations or 60 calendar days before the expiration date of the works approval, whichever is the sooner.
- 13.** The works approval holder must ensure the report required by condition 12 includes the following:
 - (a) a summary of monitoring results obtained during time limited operations under condition 9;
 - (b) the OFA report as specified in condition 10 and 11;
 - (c) a review of performance and compliance against the conditions of the works approval and the Environmental Commissioning Report; and
 - (d) where the manufacturer's design specifications and the conditions of this works approval have not been met, what measures will the works approval holder take to meet them, and what timeframes will be required to implement those measures.

Records and reporting (general)

- 14.** The works approval holder must record the following information in relation to complaints received by the works approval holder (whether received directly from a complainant or forwarded to them by the Department or another party) about any alleged emissions from the premises:

 - (a) the name and contact details of the complainant, (if provided);
 - (b) the time and date of the complaint;
 - (c) the complete details of the complaint and any other concerns or other issues raised; and
 - (d) the complete details and dates of any action taken by the works approval holder to investigate or respond to any complaint.
- 15.** The works approval holder must maintain accurate and auditable books including the following records, information, reports, and data required by this works approval:

 - (a) the works conducted in accordance with condition 1;
 - (b) any maintenance of infrastructure that is performed in the course of complying with condition 6;
 - (c) monitoring programmes undertaken in accordance with condition(s) 9, 10 and 11; and
 - (d) complaints received under condition 14.
- 16.** The books specified under condition 15 must:

 - (a) be legible;
 - (b) if amended, be amended in such a way that the original version(s) and any subsequent amendments remain legible and are capable of retrieval;
 - (c) be retained by the works approval holder for the duration of the works approval; and
 - (d) be available to be produced to an inspector or the CEO as required.

Definitions

In this works approval, the terms in Table 5 have the meanings defined.

Table 5: Definitions

Term	Definition
annual period	a 12 month period commencing from 1 January until 31 December of the same year.
books	has the same meaning given to that term under the EP Act.
CEO	means Chief Executive Officer. CEO for the purposes of notification means: Director General Department administering the <i>Environmental Protection Act 1986</i> Locked Bag 10 Joondalup DC WA 6919 info@dwer.wa.gov.au
Department	means the department established under section 35 of the <i>Public Sector Management Act 1994</i> and designated as responsible for the administration of Part V Division 3 of the EP Act.
discharge	has the same meaning given to that term under the EP Act.
emission	has the same meaning given to that term under the EP Act.
Environmental Compliance Report	means a report to satisfy the CEO that the conditioned infrastructure and/or equipment has been constructed and/or installed in accordance with the works approval.
EP Act	<i>Environmental Protection Act 1986 (WA)</i> .
EP Regulations	<i>Environmental Protection Regulations 1987 (WA)</i> .
FOGO	means food organics and garden organics waste collected from kerbside municipal collections
Odour intensity	means the relative perceived strength of an odour. Intensity descriptor scales should be applied according to the German standards for the determination of odour intensity under field conditions (VDI 3940-3).
Suitably qualified odour panellist	means a person who has been tested and qualified to undertake odour measurements in an odour laboratory or in the field in compliance with AS 4323.3:2001 and EN 16841-2 and VDI 3940-3 standards respectively.
OFA	odour field assessment as described in the <i>Guideline: Odour</i>

Term	Definition
	<i>Emissions</i>
premises	the premises to which this licence applies, as specified at the front of this licence and as shown on the premises map (Figure 1) in Schedule 1 to this works approval.
prescribed premises	has the same meaning given to that term under the EP Act.
suitably qualified person	means a person who: <ul style="list-style-type: none"> (a) holds a Bachelor of Engineering degree recognised by the Institute of Engineers; and (b) has a minimum of five years of experience working in the field of engineering; or is otherwise approved in writing by the CEO to act in this capacity.
time limited operations	refers to the operation of the infrastructure and equipment identified under this works approval that is authorised for that purpose, subject to the relevant conditions.
waste	has the same meaning given to that term under the EP Act.
works approval	refers to this document, which evidences the grant of the works approval by the CEO under section 54 of the EP Act, subject to the conditions.
works approval holder	refers to the occupier of the premises being the person to whom this works approval has been granted, as specified at the front of this works approval.

END OF CONDITIONS

Schedule 1: Maps

Premises map

The boundary of the prescribed premises is shown in the map below (Figure 1).

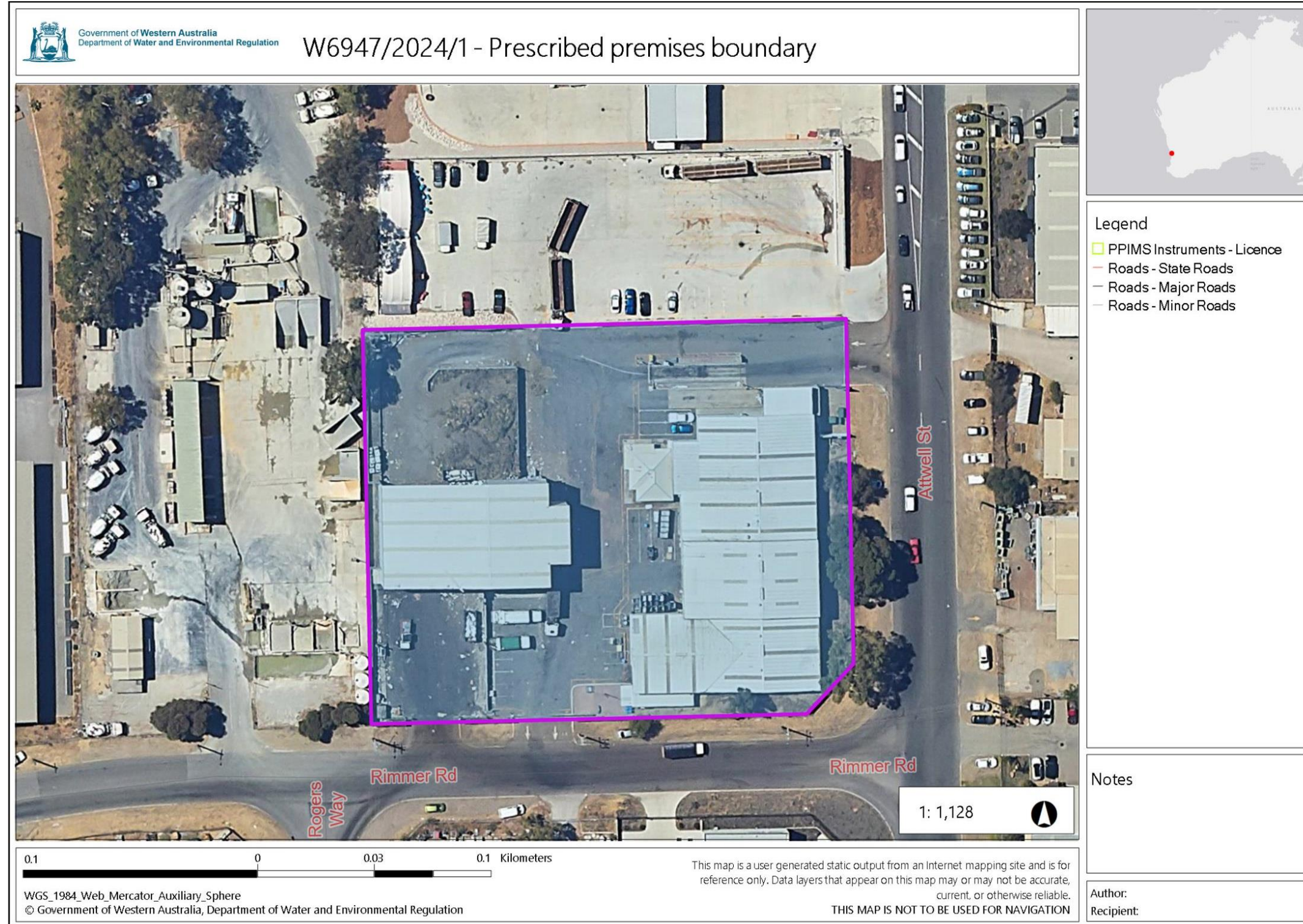


Figure 1: Map of the boundary of the prescribed premises

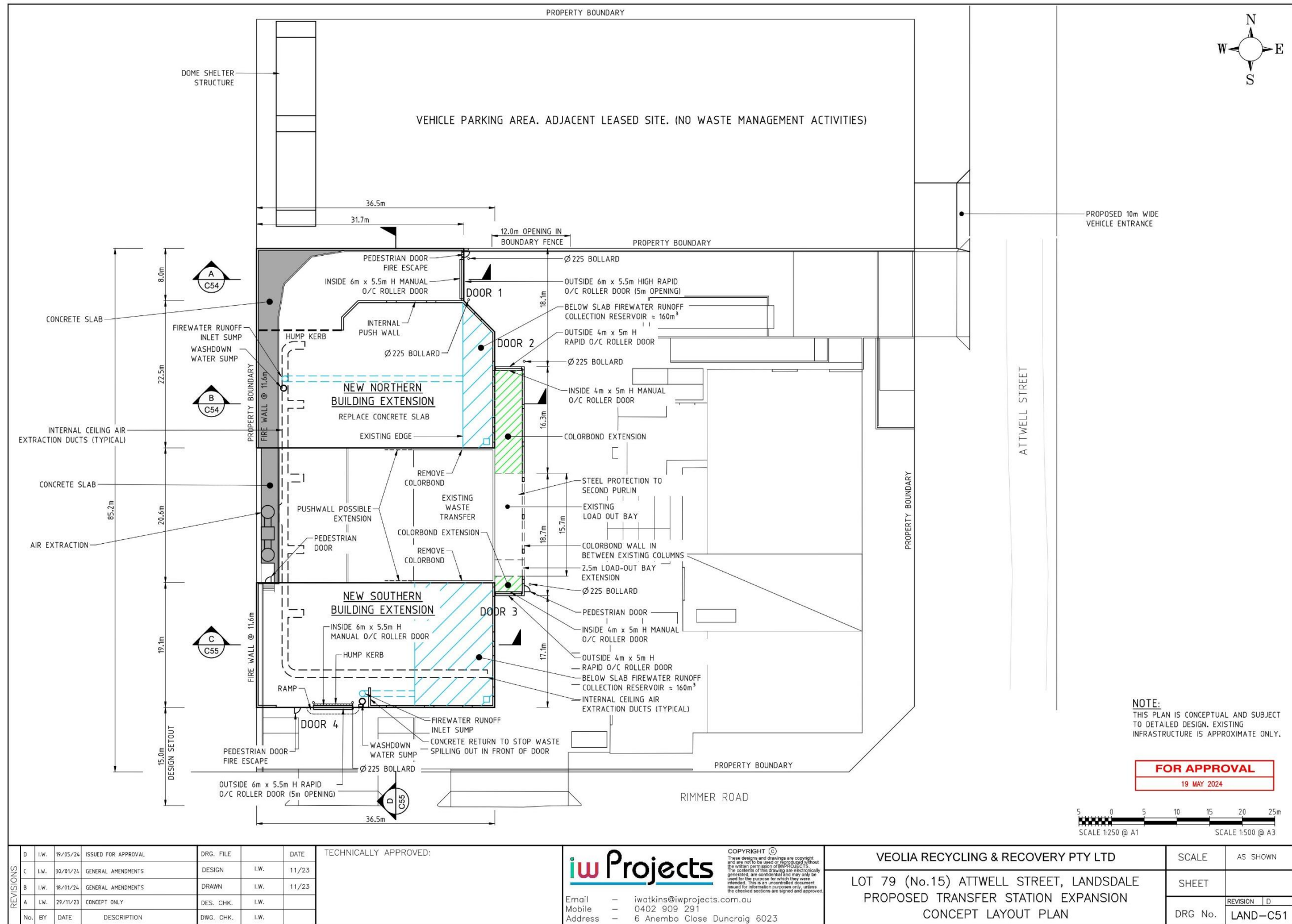


Figure 2: Premises layout plan

W6947/2024/1

IR-T05 Works approval template (v6.0) (September 2022)

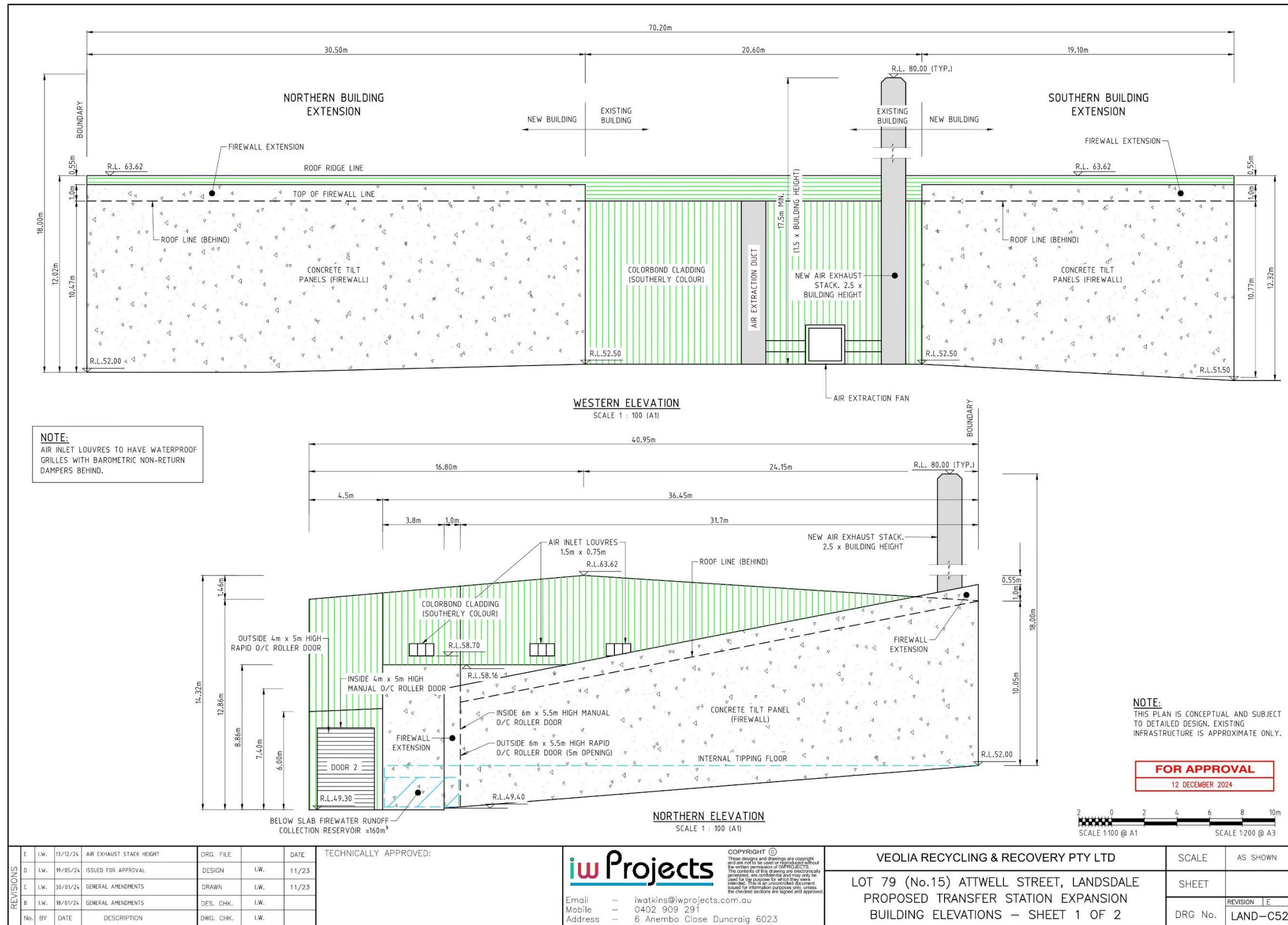


Figure 3: Location of the air control system's equipment