



Works approval number	W6402/2020/1
Works approval holder	Hazer Group Limited
ACN	144 044 600
Registered business address	Level 9, 99 St Georges Terrace Perth, WA, 6000
DWER file number	DER2020/000194
Duration	03/08/2020 to 2/02/2026
Date of issue	03/08/2020
Date of amendment	20/01/2025
Premises details	Hydrogen Commercial Demonstration Plant 837 Cockburn Road MUNSTER WA 6166 Legal description - Part of Lot 09 on Deposited Plan 31097 As defined by the coordinates in Schedule 2

Prescribed premises category description (Schedule 1, <i>Environmental Protection Regulations 1987</i>)	Assessed production capacity
Category 31: Chemical Manufacturing	480 tonnes per annum

This amended works approval is granted to the works approval holder, subject to the attached conditions, on 20/01/2025, by:

Amine Fisher
Manager, Process Industries

an officer delegated under section 20 of the *Environmental Protection Act 1986* (WA)

Works approval history

Date	Reference number	Summary of changes
3/08/2020	W6402/2020/1	Works approval granted.
27/10/2022	W6402/2020/1	Works approval expiry extended until 2 August 2024, allowance for staged environmental compliance reporting timeframes and staged time-limited operations reporting requirements included into works approval
29/07/2024	W6402/2020/1	Works approval expiry extended until 2 February 2025
20/01/2025	W6402/2020/1	Works approval expiry extended until 2 February 2026

Interpretation

In this works approval:

- (a) the words 'including', 'includes' and 'include' in conditions mean "including but not limited to", and similar, as appropriate;
- (b) where any word or phrase is given a defined meaning, any other part of speech or other grammatical form of that word or phrase has a corresponding meaning;
- (c) where tables are used in a condition, each row in a table constitutes a separate condition;
- (d) any reference to an Australian or other standard, guideline, or code of practice in this works approval:
 - (i) if dated, refers to that particular version; and
 - (ii) if not dated, refers to the latest version and therefore may be subject to change over time;
- (e) unless specified otherwise, any reference to a section of an Act refers to that section of the EP Act; and
- (f) unless specified otherwise, all definitions are in accordance with the EP Act.

NOTE: This works approval requires specific conditions to be met but does not provide any implied authorisation for other emissions, discharges, or activities not specified in this works approval.

Works approval conditions

The works approval holder must ensure that the following conditions are complied with:

Construction phase

Infrastructure and equipment

1. The works approval holder must for each stage of works:
 - (a) construct and install the infrastructure and equipment;
 - (b) in accordance with the corresponding design and installation requirements; and
 - (c) at the corresponding infrastructure location;
 as set out in Table 1.

Table 1: Design and installation requirements

	Stage of works	Infrastructure	Design and construction / installation requirements	Infrastructure location
1.	Stage 1	Cold Reactor System process infrastructure and equipment, excluding items 2 to 7	N/A	Within process area, see Schedule 1.
2.	Stage 1	Gas flare stack	Gas flare stack to discharge 9m above finished floor level and be 1.2m in diameter To incorporate a pilot flame and stack flame monitoring system that will detect if they are alight or not and will alert the operator in the event of a blowout.	E 383989, N 6443708, see Schedule 1.
3.	Stage 1	Wastewater collection pit	To be constructed from concrete. To incorporate a volumetric monitoring system, with a control level set point of 70% and high-level alarm that is set to trigger when water exceeds 80%.	Within process area, see Schedule 1.
4.	Stage 1	Biogas compression package	Gas compressor rated sound power level not to exceed 85 dB(A) at 1m	To south of access road, see Schedule 1.
5.	Stage 2	Hot reactor system process infrastructure and equipment excluding items 2 to 7.	N/A	Within process area, see Schedule 1.
6.	Stage 2	Catalyst loading system and graphite unloading system	Systems to be sealed such as to minimise the escape of catalyst or graphite.	Within process area, see Schedule 1.
7.	Stage 2	Process and H ₂ gas compression packages	Gas compressor rated sound power level not to exceed 85 dB(A) at 1m	Within process area, see Schedule 1.

Compliance reporting

2. The works approval holder must within 30 calendar days of items of infrastructure required by condition 1 in a stage of works being constructed and/or installed:
 - (a) undertake an audit of their compliance with the requirements of condition 1 for that stage of works; and
 - (b) prepare and submit to the CEO an Environmental Compliance Report on that stage of works compliance.
3. The Environmental Compliance Report(s) required by condition 2, must include as a minimum the following:
 - (a) certification by a Chartered Engineer that the items of infrastructure or component(s) thereof, as specified in condition 1, have been constructed in accordance with the relevant requirements for that stage of works specified in condition 1;
 - (b) as constructed plans and a detailed site plan for each item of infrastructure or component of infrastructure for that stage of works specified in condition 1; and
 - (c) be signed by a person authorised to represent the works approval holder and contains the printed name and position of that person.

Time limited operations

Commencement and duration

4. The works approval holder may only commence time limited operations of infrastructure in a stage of works identified in condition 1 if the Environmental Compliance Report for that stage of works as required by condition 2 has been submitted by the works approval holder and the Environmental Compliance Report includes that item of infrastructure.
5. The works approval holder may conduct time limited operations infrastructure for each stage of works specified in condition 1 (as applicable):
 - (a) for a period not exceeding 180 calendar days from the day the works approval holder meets the requirements of condition 4; or
 - (b) until such time as a licence for that stage of works is granted in accordance with Part V of the *Environmental Protection Act 1986*.

Time limited operations requirements

6. During time limited operations of each stage of works, the works approval holder must ensure that the premises infrastructure and equipment listed in Table 2 and located at the corresponding infrastructure location is maintained and operated in accordance with the corresponding operational requirement set out in Table 2.

Table 2: Infrastructure and equipment requirements during time limited operations

	Site infrastructure and equipment	Operational requirement	Infrastructure location
1.	Gas flare Stack, item 2 in Table 1	All continuous waste gases to only be discharged via the gas flare stack, with the exception of discharges from Pressure Safety Valves (PSVs) during fire emergencies and maintenance scenarios.	E 383989.603, N 6443708.655, see Schedule 1.

Records and reporting (general)

7. The works approval holder must record the following information in relation to complaints received by the works approval holder (whether received directly from a complainant or forwarded to them by the Department or another party) about any alleged emissions from the premises:
 - (a) the name and contact details of the complainant, (if provided);
 - (b) the time and date of the complaint;
 - (c) the complete details of the complaint and any other concerns or other issues raised; and
 - (d) the complete details and dates of any action taken by the works approval holder to investigate or respond to any complaint.
8. The works approval holder must maintain accurate and auditable books including the following records, information, reports, and data required by this works approval:
 - (a) the works conducted in accordance with condition 1;
 - (b) complaints received under condition 7.
9. The books specified under condition 8 must:
 - (a) be legible;
 - (b) if amended, be amended in such a way that the original version(s) and any subsequent amendments remain legible and are capable of retrieval;
 - (c) be retained by the works approval holder for the duration of the works approval; and
 - (d) be available to be produced to an inspector or the CEO as required.

Definitions

In this works approval, the terms in Table 3 have the meanings defined.

Table 3: Definitions

Term	Definition
CEO	means Chief Executive Officer. CEO for the purposes of notification means: Director General Department administering the <i>Environmental Protection Act 1986</i> Locked Bag 10 Joondalup DC WA 6919 info@dwer.wa.gov.au
Chartered Engineer	means a Chartered Engineer registered with Engineers Australia (https://www.engineersaustralia.org.au/)
Department	means the department established under section 35 of the <i>Public Sector Management Act 1994</i> and designated as responsible for the administration of Part V Division 3 of the EP Act.
Environmental Compliance Report	means a report to satisfy the CEO that the conditioned equipment has been installed in accordance with the works approval.
EP Act	<i>Environmental Protection Act 1986</i> (WA).
EP Regulations	<i>Environmental Protection Regulations 1987</i> (WA).
premises	the premises to which this licence applies, as specified at the front of this licence and as shown on the premises map (Figure 1) in Schedule 1 to this works approval.
Stage of works	means the discrete items of infrastructure identified in Table 1 for Stage 1 and Stage 2.
works approval	refers to this document, which evidences the grant of the works approval by the CEO under section 54 of the EP Act, subject to the conditions.
works approval holder	refers to the occupier of the premises being the person to whom this works approval has been granted, as specified at the front of this works approval.

END OF CONDITIONS

Schedule 1: Premises Map

The boundary of the prescribed premises is shown in the map below (Figure 1).

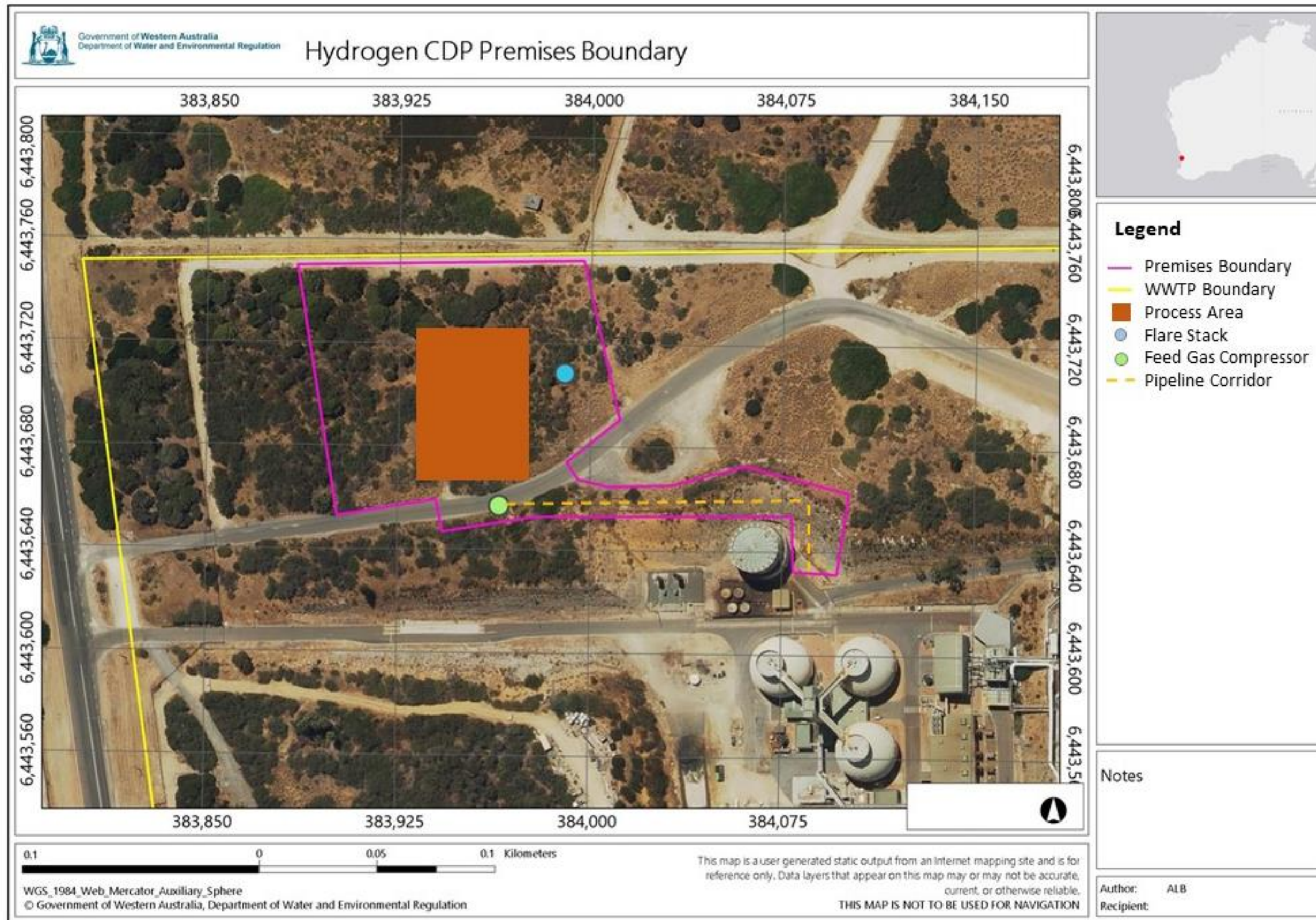


Figure 1: Map of the boundary of the prescribed premises

Schedule 2: Premises boundary

The premises boundary is defined by the coordinates in Table 4.

Table 4: Premises boundary coordinates (GDA94/MGA Zone 50)

Easting	Northing
383885	6443750
383997	6443752
384011	6443691
383991	6443674
383995	6443668
384007	6443665
384031	6443666
384060	6443673
384101	6443663
384096	6443632
384079	6443633
384079	6443654
383978	6443653
383942	6443647
383940	6443659
383901	6443653
383885	6443750