



Works approval number	W6779/2023/1
Works approval holder	Fortescue Ltd
ACN	002 594 872
Registered business address	Level 2, 87 Adelaide Terrace, East Perth WA 6004
DWER file number	DER2023/000028
Duration	2/06/2023 to 1/06/2028
Date of issue	2 June 2023
Date of amendment	20 January 2025
Premises details	Eliwana Iron Ore Mine Mining Act tenements M47/1509, M47/1522, M47/1523, M47/1524, M47/1525, M47/1526 and M47/1537 HAMMERSLEY RANGE WA 6716, as depicted in Schedule 1.

Prescribed premises category description (Schedule 1, <i>Environmental Protection Regulations 1987</i>)	Assessed production / design capacity
Category 73: Bulk storage of chemicals etc.: premises on which acids, alkalis or chemicals that — (a) contain at least one carbon to carbon bond; and (b) are liquid at STP (standard temperature and pressure), are stored.	1,000 m ³ in aggregate (this works approval) 6,500 m ³ in aggregate (as per L9221/2019/1)
Assessed activities directly related to the above categories	
Electric power generation: 2.5 MW (below threshold prescribed under Schedule 1 of the Environmental Protection Regulations 1987 for Category 52)	

This amended works approval is granted to the works approval holder, subject to the attached conditions, on 20 January 2025, by:

MANAGER, PROCESS INDUSTRIES

an officer delegated under section 20 of the *Environmental Protection Act 1986* (WA)

Works approval history

Date	Reference number	Summary of changes
2/06/2023	W6779/2023/1	Works approval granted.
20/01/2025	W6779/2023/1	Extension to time limited operations.

Interpretation

In this works approval:

- (a) the words 'including', 'includes' and 'include' in conditions mean "including but not limited to", and similar, as appropriate;
- (b) where any word or phrase is given a defined meaning, any other part of speech or other grammatical form of that word or phrase has a corresponding meaning;
- (c) where tables are used in a condition, each row in a table constitutes a separate condition;
- (d) any reference to an Australian or other standard, guideline, or code of practice in this works approval:
 - (i) if dated, refers to that particular version; and
 - (ii) if not dated, refers to the latest version and therefore may be subject to change over time;
- (e) unless specified otherwise, any reference to a section of an Act refers to that section of the EP Act; and
- (f) unless specified otherwise, all definitions are in accordance with the EP Act.

NOTE: This works approval requires specific conditions to be met but does not provide any implied authorisation for other emissions, discharges, or activities not specified in this works approval.

Works approval conditions

The works approval holder must ensure that the following conditions are complied with:

Construction phase

Infrastructure and equipment

1. The works approval holder must construct and/or establish the infrastructure listed in Table 1:
 - (a) in accordance with the corresponding design and construction requirements; and
 - (b) at the corresponding infrastructure location; as set out in that table.

Table 1: Design and construction / installation requirements

	Infrastructure	Design and construction / installation requirements	Infrastructure location
1.	Bulk fuel and chemical storage areas to store 1000 m ³ (in aggregate)	<p>All chemicals and hydrocarbons stored in tanks must meet the following design/construction requirements:</p> <ol style="list-style-type: none"> a) All tanks shall be double-walled; b) The spacing between adjacent tanks shall be at least 600 mm; c) Shall be protected from damage caused by vehicle or equipment impact. This can include windrows and/or bollards; and d) Shall have a method of determining the level of its contents. <p>All bunds must meet the following requirements:</p> <ol style="list-style-type: none"> e) Must have a net capacity of at least 110% of the capacity of the largest vessel and 25% of the total capacity of all vessels stored within the bund; f) If two or more vessels operate as a single unit, the capacity of all such vessels shall be utilised when calculating the necessary compound capacity; g) Must be lined with an HDPE liner; h) Must be sufficiently designed to allow practical recovery of any spillage and/or any collected and potentially contaminated rainfall; and i) Must be capable of directing hydrocarbon spillage to the oily water separation facility for disposal. 	As shown in Figure 2 and 3 in Schedule 1.

	Infrastructure	Design and construction / installation requirements	Infrastructure location
2.	<p>Non-process infrastructure (NPI) facility</p> <p>Maintenance and refuelling areas including washdown bays and oily water separation (OWS) facility</p>	<p>a) Refuelling area to be concreted with spill containment;</p> <p>b) Capable of directing fuel spillage or accumulated storm water to the oily water separation facility for treatment and disposal; and</p> <p>c) Each maintenance workshop and washdown bay includes a sump sized to accommodate a daily capacity of 1,440 m³ of washdown water and capable of being redirected to the wash down water collection pond.</p>	As shown in Figure 2 in Schedule 1.
3.	<p>Autonomous road train (ART) workshop</p> <p>Maintenance facility including washdown area and treatment system</p>	<p>a) An automated wash down system to be installed;</p> <p>b) Installation of a sump system, capable of capturing washdown water; and</p> <p>c) Installation of a coalescing system capable of removing up to 20,000 Litres per day (20 m³ per day) of oil collected during washdown.</p>	As shown in Figure 3 in Schedule 1.
4.	Power generation areas	<p>Power generation for Eliwana Flying Fish Camp WWTP and associated areas:</p> <p>a) Construction of four gensets with a total capacity of 1 MW comprised of 3 off-prime rated 250 kVA gensets (750 kVA) plus one spare 250 kVA genset for redundancy or unanticipated overload; and</p> <p>b) 110kL and self-bunded hydrocarbon storage diesel storage tank.</p> <p>Power generation for NPI facility:</p> <p>c) Installation of two duty generators including 2 x 350 kVA and one standby generator 350 kVA</p> <p>Power generation for ART workshop:</p> <p>d) Installation of one duty generator 500 kVA and one standby generator 5000 kVA</p>	As shown in Figure 2 and 3 in Schedule 1

2. The works approval holder must not depart from the design and construction requirements specified in Table 1 except:
- where such departure is minor in nature and does not materially change or affect the infrastructure; or
 - where such department improves the functionality of the infrastructure and does not increase risks to public health, public amenity or the environment; and
 - and all other conditions in this works approval are still satisfied.

3. The works approval holder must provide to the CEO a description of, and explanation for, any departures from the requirements specified in Table 1 along with the Environmental Compliance Report required by condition 4.

Compliance reporting

4. The works approval holder must within 30 calendar days of an item of infrastructure or equipment required by condition 1 being constructed and/or installed:
 - (a) undertake an audit of their compliance with the requirements of condition 1; and
 - (b) prepare and submit to the CEO an Environmental Compliance Report on that compliance.
5. The Environmental Compliance Report required by condition 4, must include as a minimum the following:
 - (a) certification by a suitably qualified engineer that the infrastructure or component(s) thereof, as specified in condition 1, have been constructed in accordance with the relevant requirements specified in condition 1;
 - (b) as constructed plans, or a detailed site plan for each item of infrastructure or component of infrastructure specified in condition 1; and
 - (c) be signed by a person authorised to represent the works approval holder and contains the printed name and position of that person.

Environmental commissioning

6. The works approval holder may only commence environmental commissioning of an item of infrastructure listed in Table 2 once the Environmental Compliance Report has been submitted for that item of infrastructure in accordance with condition 4 of this works approval.
7. The works approval holder must ensure that during the commissioning period, sludge from the ART workshop washdown treatment system must be contained within sealed sludge tank prior to removal by a licensed controlled waste carrier for disposal to a licensed controlled waste disposal facility.
8. During the commissioning period, the works approval holder must monitor the treated wastewater at the monitoring location and for the parameters as listed in Table 2.

Table 2: Emissions and discharge monitoring during environmental commissioning

Monitoring location	Parameter	Frequency	Averaging Period	Unit	Method
Post treatment wastewater from NPI facility OWS as shown in Figure 2 of Schedule 1.	Total Recoverable Hydrocarbons (TRH)	Once during environmental conditioning	Spot sample	mg/L	AS5667.10:1998
Post treatment wastewater from ART workshop washdown water treatment system in Figure 3 of Schedule 1.	Total Recoverable Hydrocarbons (TRH)	Once during environmental conditioning	Spot sample	mg/L	AS5667.10:1998

9. The works approval holder must record the results of all monitoring activity required by condition 8.

Environmental Commissioning Report

10. The works approval holder must submit to the CEO one Environmental Commissioning Report within 30 calendar days of the completion date of environmental commissioning for all items of infrastructure specified in Table 2.
11. The works approval holder must ensure the Environmental Commissioning Report required by condition 10 of this works approval includes the following:
 - (a) a summary of the environmental commissioning activities undertaken, including timeframes and amount of wastewater processed;
 - (b) the wastewater treatment monitoring results recorded in accordance with condition 8.
 - (c) a summary of the environmental performance of each item of infrastructure or equipment as constructed and/or installed, including a comparison of the treated wastewater monitoring results against discharge limits specified in condition 15;
 - (d) a review of the works approval holder's performance and compliance against the conditions of this works approval; and
 - (e) where they have not been met, measures proposed to meet the manufacturer's design specifications and the conditions of this works approval, together with timeframes for implementing the proposed measures.

Time limited operations phase

Commencement and duration

12. The works approval holder may only commence time limited operations for an item of infrastructure identified in condition 1:
 - (a) where the item of infrastructure is not authorised to undertake environmental commissioning, the Environmental Compliance Report as required by condition 4 has been submitted by the works approval holder for that item of infrastructure; and
 - (b) where the item of infrastructure is authorised to undertake environmental commissioning, the Environmental Commissioning Report for that item of infrastructure as required by condition 10 has been submitted by the works approval holder.
13. The works approval holder may conduct time limited operations for an item of infrastructure specified in condition 14 (as applicable):
 - (a) for a period not exceeding 360 calendar days from the day the works approval holder meets the requirements of condition 12 for that item of infrastructure; or
 - (b) until such time as a licence for that item of infrastructure is granted in accordance with Part V of the *Environmental Protection Act 1986*,whichever is sooner.

Time limited operations requirements, monitoring and emission limits

14. During time limited operations, the works approval holder must ensure that the premises infrastructure and equipment listed in Table 3 and located at the

corresponding infrastructure location is maintained and operated in accordance with the corresponding operational requirement set out in Table 3.

Table 3: Infrastructure and equipment requirements during time limited operations

	Site infrastructure and equipment	Operational requirement	Infrastructure location
1.	Non-process infrastructure (NPI) facility Maintenance and refuelling areas including washdown bays OWS facility	a) Washdown water must be directed from the sump and then redirected to the wash down water collection pond and OWS facility; and b) A maximum daily volume of 1,440 m ³ per day of oily water can be collected from maintenance workshops and washdown bays.	As shown in Figure 2 in Schedule 1.
2.	Autonomous road train (ART) workshop Maintenance facility including washdown area and treatment system	a) Washdown water must be directed to the sump and treatment system; and b) Captured waste hydrocarbons must be removed from the site via a licenced controlled waste carrier.	As shown in Figure 3 in Schedule 1.
3.	Power generation areas	Weekly inspections must be conducted of chemical and hydrocarbon storage areas.	

15. The works approval holder must ensure that treated wastewater emissions monitored from the corresponding monitoring location, do not exceed the corresponding limit during time limited operations in accordance with Table 4, prior to reusage as dust suppression.

Table 4: Discharge monitoring and limits during time limited operations

Monitoring location	Parameter	Frequency	Averaging Period	Limit	Method
Post treatment wastewater from NPI facility OWS as shown in Figure 2 of Schedule 1.	TRH	Quarterly	Spot sample	15 mg/L	AS5667.10:1998
Post treatment wastewater from ART workshop washdown water treatment system in Figure 3 of Schedule 1.					

16. The works approval holder must record the results of all monitoring activity required by condition 15.

Compliance reporting

17. The works approval holder must submit to the CEO a report on the time limited operations within 30 calendar days of the completion date of time limited operations.

- 18.** The works approval holder must ensure the report required by condition 17 includes the following:
- (a) a summary of the time limited operations, including timeframes and amount of wastewater processed;
 - (b) a summary of wastewater monitoring results obtained during time limited operations under condition 15; and
 - (c) where the manufacturer's design specifications and the conditions of this works approval have not been met, what measures will the works approval holder take to meet them, and what timeframes will be required to implement those measures.

Records and reporting (general)

- 19.** The works approval holder must record the following information in relation to complaints received by the works approval holder (whether received directly from a complainant or forwarded to them by the Department or another party) about any alleged emissions from the premises:
- (a) the name and contact details of the complainant, (if provided);
 - (b) the time and date of the complaint;
 - (c) the complete details of the complaint and any other concerns or other issues raised; and
 - (d) the complete details and dates of any action taken by the works approval holder to investigate or respond to any complaint.
- 20.** The works approval holder must maintain accurate and auditable books including the following records, information, reports, and data required by this works approval:
- (a) the works conducted in accordance with condition 1;
 - (b) any maintenance of infrastructure that is performed in the course of complying with condition 14;
 - (c) monitoring programmes undertaken in accordance with conditions 8 and 15; and
 - (d) complaints received under condition 19.
- 21.** The books specified under condition 20 must:
- (a) be legible;
 - (b) if amended, be amended in such a way that the original version(s) and any subsequent amendments remain legible and are capable of retrieval;
 - (c) be retained by the works approval holder for the duration of the works approval; and
 - (d) be available to be produced to an inspector or the CEO as required.

Definitions

In this works approval, the terms in Table 5 have the meanings defined.

Table 5: Definitions

Term	Definition
books	has the same meaning given to that term under the EP Act.
CEO	means Chief Executive Officer. CEO for the purposes of notification means: Director General Department administering the <i>Environmental Protection Act 1986</i> Locked Bag 10 Joondalup DC WA 6919 info@dwer.wa.gov.au
Department	means the department established under section 35 of the <i>Public Sector Management Act 1994</i> and designated as responsible for the administration of Part V Division 3 of the EP Act.
discharge	has the same meaning given to that term under the EP Act.
emission	has the same meaning given to that term under the EP Act.
environmental commissioning	means the sequence of activities to be undertaken to test equipment integrity and operation, or to determine the environmental performance, of equipment and infrastructure to establish or test a steady state operation and confirm design specifications.
Environmental Commissioning Report	means a report on any commissioning activities that have taken place and a demonstration that they have concluded, with focus on emissions and discharges, waste containment, and other environmental factors.
Environmental Compliance Report	means a report to satisfy the CEO that the conditioned infrastructure and/or equipment has been constructed and/or installed in accordance with the works approval.
EP Act	<i>Environmental Protection Act 1986</i> (WA).
EP Regulations	<i>Environmental Protection Regulations 1987</i> (WA).
HDPE	means high density polyethylene
kVA	means 1,000 volt-amps
m ³	means cubic metres
mg/L	means milligrams per litre
OWS	means oily water separator

Term	Definition
premises	the premises to which this licence applies, as specified at the front of this licence and as shown on the premises map (Figure 1 in Schedule 1 to this works approval).
prescribed premises	has the same meaning given to that term under the EP Act.
time limited operations	refers to the operation of the infrastructure and equipment identified under this works approval that is authorised for that purpose, subject to the relevant conditions.
TRH	Means total recoverable hydrocarbons
waste	has the same meaning given to that term under the EP Act.
works approval	refers to this document, which evidences the grant of the works approval by the CEO under section 54 of the EP Act, subject to the conditions.
works approval holder	refers to the occupier of the premises being the person to whom this works approval has been granted, as specified at the front of this works approval.

END OF CONDITIONS

Schedule 1: Maps

Premises map

The boundary of the prescribed premises is shown in the map below (Figure 1).

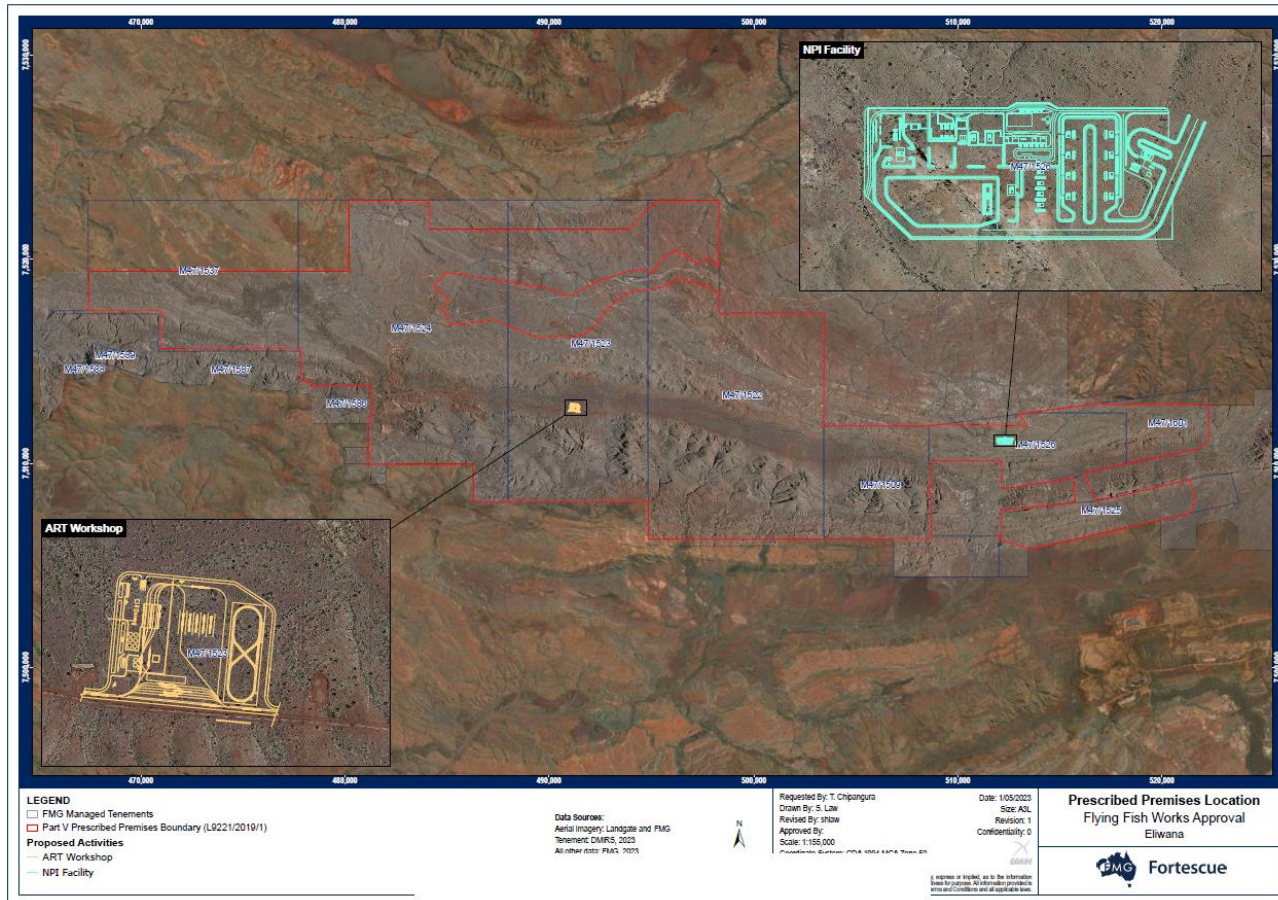


Figure 1: Map of the boundary of the prescribed premises

W6779/2023/1 (Amendment date: 20 January 2025)
IR-T05 Works approval template (v6.0) (September 2022)

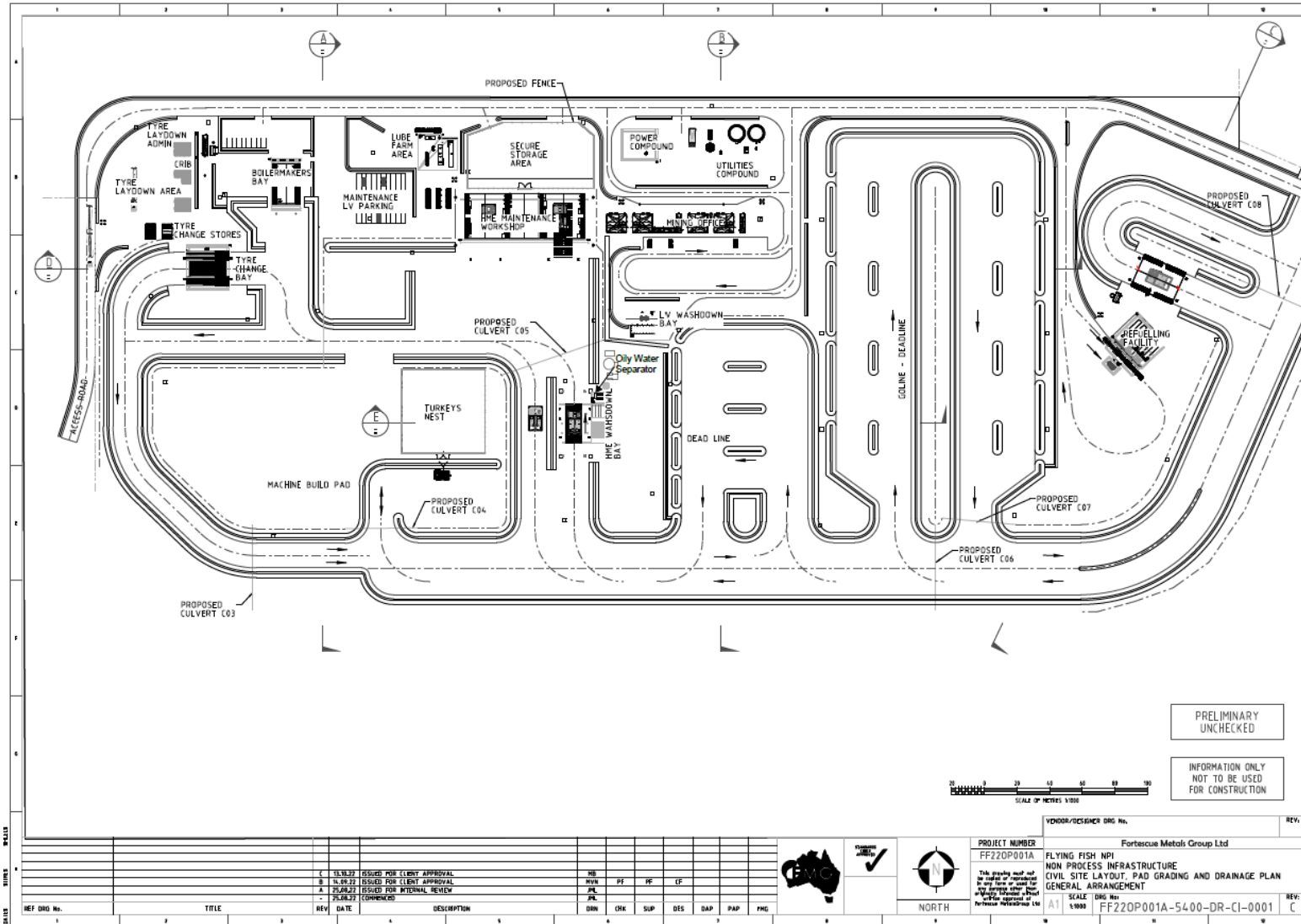


Figure 2: Non-process infrastructure facility site layout

W6779/2023/1 (Amendment date: 20 January 2025)
 IR-T05 Works approval template (v6.0) (September 2022)

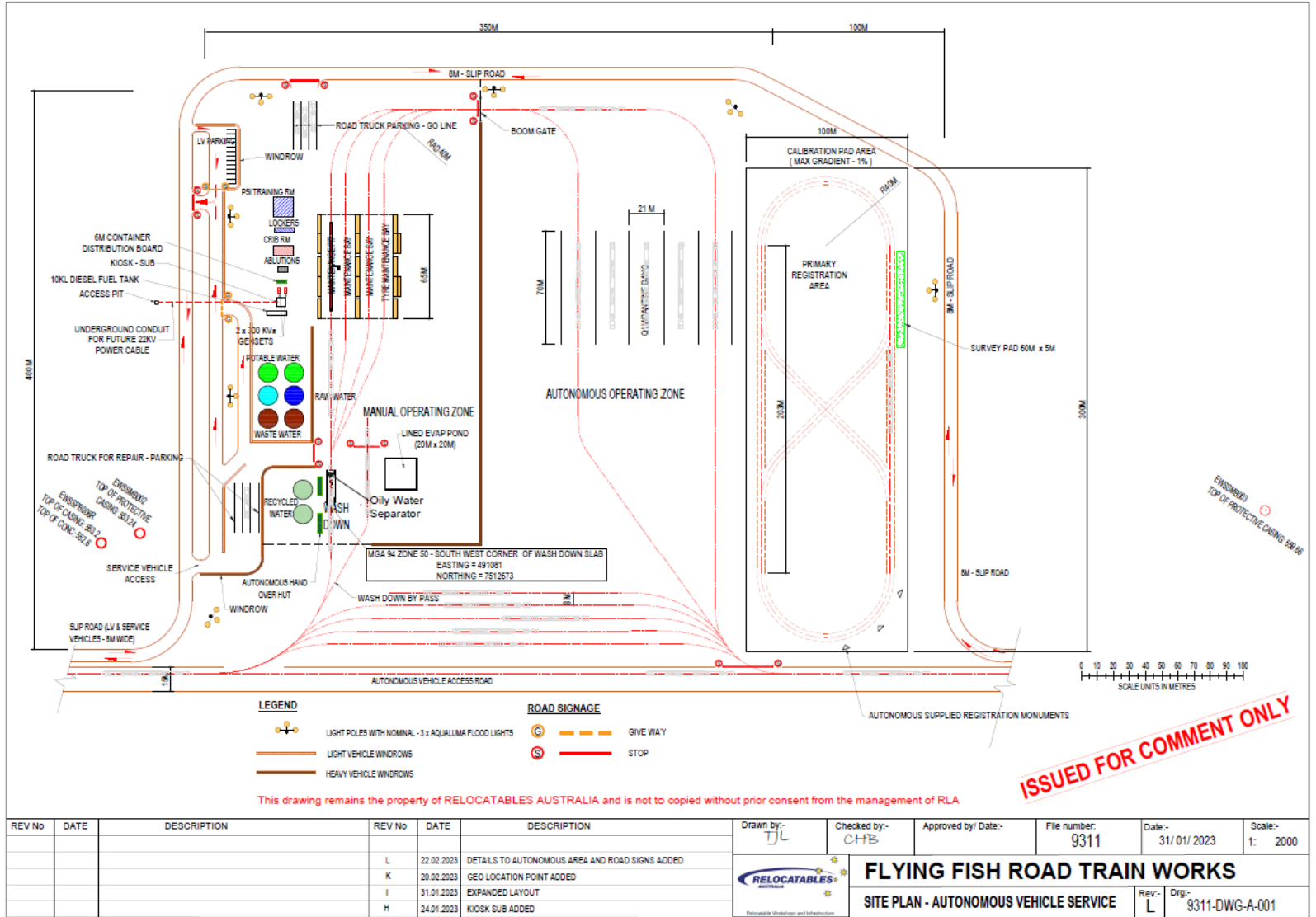


Figure 3: Autonomous road train workshop site layout

W6779/2023/1 (Amendment date: 20 January 2025)
 IR-T05 Works approval template (v6.0) (September 2022)