



# Works Approval

<b>Works approval number</b>	W2886/2025/1
<b>Works approval holder</b>	Paddington Gold Pty Limited
<b>ACN</b>	008 585 886
<b>Registered business address</b>	'Viskovich House' Level 1, 377 Hannan Street Kalgoorlie WA 6430
<b>DWER file number</b>	DER2020/000062~4
<b>Duration</b>	10/03/2025 to 09/03/2028
<b>Date of issue</b>	10/03/2025
<b>Premises details</b>	Golden Cities – Victoria Pit dewatering pipeline Part of Mining Tenements M24/188, M24/251, M24/425 and M24/557 As defined by the map in Schedule 1 and coordinates in Schedule 2

<b>Prescribed premises category description (Schedule 1, <i>Environmental Protection Regulations 1987</i>)</b>	<b>Assessed production / design capacity</b>
Category 6: Mine dewatering	2,200,000 tonnes per year

This works approval is granted to the works approval holder, subject to the attached conditions, on 10 March 2025, by:

**A/MANAGER, RESOURCE INDUSTRIES  
INDUSTRY REGULATION (STATEWIDE DELIVERY)**

an officer delegated under section 20 of the *Environmental Protection Act 1986* (WA)

## Works approval history

Date	Reference number	Summary of changes
10/03/2025	W2886/2025/1	Works approval granted for construction and time limited operation of dewatering pipeline and discharge to Victory Pit.

## Interpretation

In this works approval:

- (a) the words 'including', 'includes' and 'include' in conditions mean "including but not limited to", and similar, as appropriate;
- (b) where any word or phrase is given a defined meaning, any other part of speech or other grammatical form of that word or phrase has a corresponding meaning;
- (c) where tables are used in a condition, each row in a table constitutes a separate condition;
- (d) any reference to an Australian or other standard, guideline, or code of practice in this works approval:
  - (i) if dated, refers to that particular version; and
  - (ii) if not dated, refers to the latest version and therefore may be subject to change over time;
- (e) unless specified otherwise, any reference to a section of an Act refers to that section of the EP Act; and
- (f) unless specified otherwise, all definitions are in accordance with the EP Act.

**NOTE:** This works approval requires specific conditions to be met but does not provide any implied authorisation for other emissions, discharges, or activities not specified in this works approval.

## Works approval conditions

The works approval holder must ensure that the following conditions are complied with:

### Construction phase

#### Infrastructure and equipment

1. The works approval holder must:
  - (a) install the infrastructure;
  - (b) in accordance with the corresponding design and installation requirements; and
  - (c) at the corresponding infrastructure location as set out in Table 1.

**Table 1: Design and installation requirements**

	Infrastructure	Design and installation requirements	Infrastructure location
1.	Victory Pit Dewatering pipeline	<ol style="list-style-type: none"> <li>1) Pipeline required to meet the following standards:               <ol style="list-style-type: none"> <li>(a) AS/NZS 2033:3008: Installation of polyethylene pipe systems;</li> <li>(b) AS/NZS 4129:2008: Fittings for polyethylene (PE) pipes for pressure applications;</li> <li>(c) AS/NZS 4130:2009 Polyethylene (PE) pipes for pressure applications; and</li> <li>(d) AS/NZS 4131:2010: Polyethylene (PE) compounds for pressure pipes and fittings.</li> </ol> </li> <li>2) Pipeline to be:               <ol style="list-style-type: none"> <li>(a) equipped with telemetry systems and pressure sensors along pipelines to allow the detection of leaks and failures; and/or</li> <li>(b) equipped with automatic cut-outs in the event of a pipe failure; and</li> <li>(c) installed with secondary containment (v-drains and scour pits) sufficient to contain any spill for a period equal to the time between routine inspections.</li> </ol> </li> </ol>	Pipeline route to be located as shown in Figure 2 in Schedule 1

2. The works approval holder must ensure that no visible dust generated from the construction or installation of infrastructure in Table 1, crosses the boundary of the premises.

#### Compliance reporting

3. The works approval holder must within 30 calendar days of an item of infrastructure required by condition 1 being installed:
  - (a) undertake an audit of their compliance with the requirements of condition 1; and

- (b) prepare and submit to the CEO an Environmental Compliance Report on that compliance.
4. The Environmental Compliance Report required by condition 3, must include as a minimum the following:
- (a) certification by a qualified engineer that the items of infrastructure or component(s) thereof, as specified in condition 1, have been constructed in accordance with the relevant requirements specified in condition 1;
  - (b) as constructed plans or photographs and a detailed site plan for each item of infrastructure or component of infrastructure specified in condition 1; and
  - (c) be signed by a person authorised to represent the works approval holder and contains the printed name and position of that person.

## Time limited operations phase

### Commencement and duration

- 5. The works approval holder may only commence time limited operations for an item of infrastructure identified in condition 1, where the Environmental Compliance Report as required by condition 3 has been submitted by the works approval holder for that item of infrastructure.
- 6. The works approval holder may conduct time limited operations for an item of infrastructure specified in condition 8:
  - (a) for a period not exceeding 180 calendar days from the day the works approval holder meets the requirements of condition 5 (as applicable) for that item of infrastructure; or
  - (b) until such time as a licence for that item of infrastructure is granted in accordance with Part V of the Environmental Protection Act 1986, if one is granted before the end of the period specified in condition 6(a).

### Time limited operations requirements and emission limits

- 7. During time limited operations, the works approval holder is only authorised to discharge mine dewater to the Victory Pit at the discharge point depicted in Schedule 1, Figure 2.
- 8. During time limited operations, the works approval holder must ensure that the premises infrastructure and equipment listed in Table 2 is maintained and operated in accordance with the corresponding operational requirement set out in Table 2.

**Table 2: Infrastructure and equipment requirements during time limited operations**

	Site infrastructure and equipment	Operational requirements
1.	Victory Pit dewatering pipeline	1) Minimum 12 hourly inspections of pipeline and secondary containment when operating to check for visual integrity, inspections to be recorded in a written log. 2) A minimum vertical freeboard of 6 meters must be maintained below the pit crest level of Victory Pit.

## Monitoring during time limited operations

9. The works approval holder must monitor the specified parameters in accordance with Table 3 and record the results of all such monitoring.

**Table 3: Discharge monitoring during time limited operations**

Location	Parameter	Frequency	Unit	Method
Dewatering discharge to Victory Pit	Volumetric flow rate	Continuous	kL	Flow metering device
Victory Pit lake	Total Dissolved Solids <sup>1</sup>	Monthly <sup>2</sup>	mg/L	AS/NZS 5667.1
	pH <sup>1</sup>		pH units	
	Standing water level		metres below pit crest level	

Note 1: In-field non-NATA accredited analysis permitted

Note 2: When discharge is occurring during the month

## Compliance reporting

10. The works approval holder must submit to the CEO a report on the time limited operations within 30 calendar days of the completion date of time limited operations or 30 calendar days before the expiration date of the works approval, whichever is the sooner.
11. The works approval holder must ensure the report required by condition 10 includes the following:
- a summary of the time limited operations, including timeframes and the volume of dewatering discharged;
  - a summary of monitoring results obtained during time limited operations under condition 9;
  - the details of any complaints received during time limited operations in accordance with condition 12;
  - a summary of the environmental performance of all infrastructure as constructed or installed (as applicable), which includes records detailing the:
    - leaks or failures of the pipelines and;
    - the performance of the secondary containment in preventing releases to the environment.
  - a review of performance and compliance against the conditions of the works approval; and
  - where the manufacturer's design specifications and the conditions of this works approval have not been met, what measures will the works approval holder take to meet them, and what timeframes will be required to implement those measures.

## Records and reporting (general)

- 12.** The works approval holder must record the following information in relation to complaints received by the works approval holder (whether received directly from a complainant or forwarded to them by the Department or another party) about any alleged emissions from the premises:
- (a) the name and contact details of the complainant, (if provided);
  - (b) the time and date of the complaint;
  - (c) the complete details of the complaint and any other concerns or other issues raised; and
  - (d) the complete details and dates of any action taken by the works approval holder to investigate or respond to any complaint.
- 13.** The works approval holder must maintain accurate and auditable books including the following records, information, reports, and data required by this works approval:
- (a) the works conducted in accordance with condition 1;
  - (b) any maintenance of infrastructure that is performed in the course of complying with condition 8;
  - (c) monitoring programmes undertaken in accordance with condition 9; and
  - (d) complaints received under condition 12.
- 14.** The books specified under condition 13 must:
- (a) be legible;
  - (b) if amended, be amended in such a way that the original version(s) and any subsequent amendments remain legible and are capable of retrieval;
  - (c) be retained by the works approval holder for the duration of the works approval; and
  - (d) be available to be produced to an inspector or the CEO as required.

## Definitions

In this works approval, the terms in Table 4 have the meanings defined.

**Table 4: Definitions**

Term	Definition
books	has the same meaning given to that term under the EP Act.
CEO	means Chief Executive Officer. CEO for the purposes of notification means: Director General Department administering the <i>Environmental Protection Act 1986</i> Locked Bag 10 Joondalup DC WA 6919 <a href="mailto:info@dwer.wa.gov.au">info@dwer.wa.gov.au</a>
Department	means the department established under section 35 of the <i>Public Sector Management Act 1994</i> and designated as responsible for the administration of Part V Division 3 of the EP Act.
discharge	has the same meaning given to that term under the EP Act.
emission	has the same meaning given to that term under the EP Act.
Environmental Compliance Report	means a report to satisfy the CEO that the conditioned infrastructure has been installed in accordance with the works approval.
EP Act	<i>Environmental Protection Act 1986 (WA)</i> .
EP Regulations	<i>Environmental Protection Regulations 1987 (WA)</i> .
premises	the premises to which this licence applies, as specified at the front of this licence and as shown on the premises map (Figure 1) in Schedule 1 to this works approval.
prescribed premises	has the same meaning given to that term under the EP Act.
time limited operations	refers to the operation of the infrastructure and equipment identified under this works approval that is authorised for that purpose, subject to the relevant conditions.
works approval	refers to this document, which evidences the grant of the works approval by the CEO under section 54 of the EP Act, subject to the conditions.
works approval holder	refers to the occupier of the premises being the person to whom this works approval has been granted, as specified at the front of this works approval.

---

**END OF CONDITIONS**

## Schedule 1: Maps

### Premises map

The boundary of the prescribed premises is shown in the map below (Figure 1).

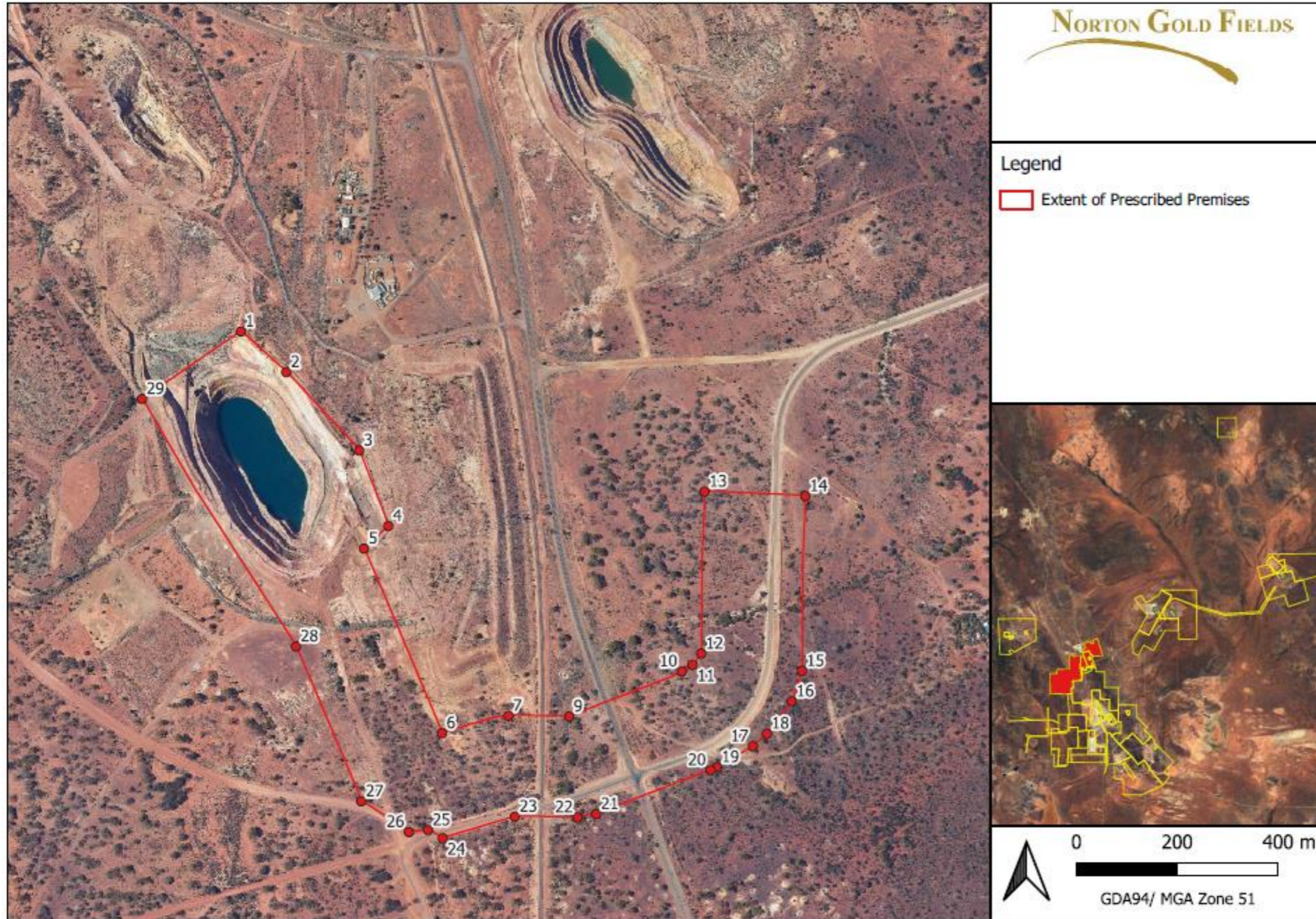


Figure 1: Map of the boundary of the prescribed premises



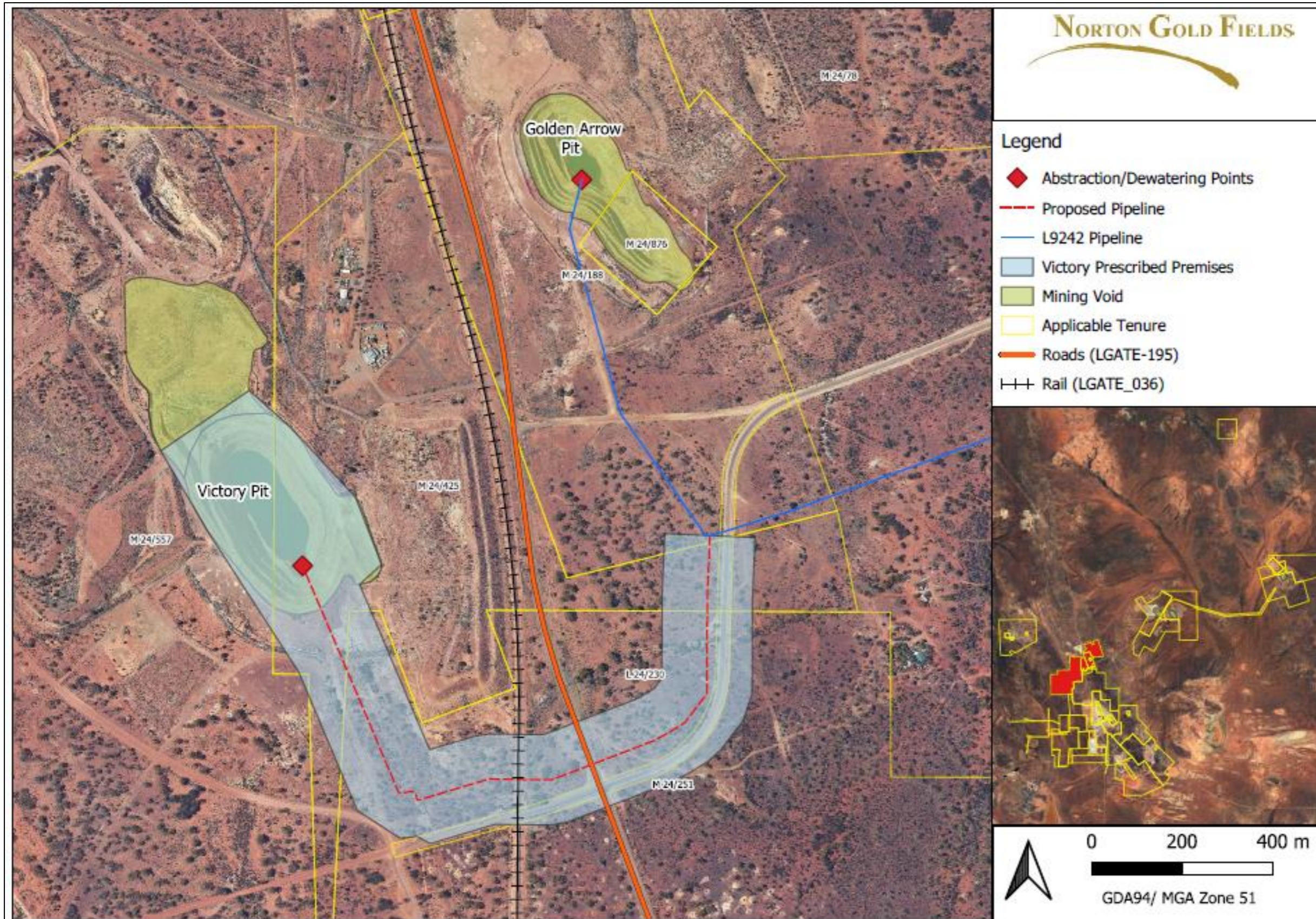


Figure 2: Infrastructure layout

## Schedule 2: Premises Boundary Coordinates

Table 4: Coordinates describing the prescribed premises boundary depicted in Figure 1, Schedule 1.

ID	Easting (MGA51)	Northing (MGA51)
1	339355.3	6630271
2	339445.4	6630190
3	339590.1	6630034
4	339648.1	6629885
5	339599.6	6629840
6	339754.6	6629474
7	339886.5	6629508
8	340006.9	6629507
9	340230.7	6629596
10	340251.7	6629609
11	340268.9	6629632
12	340275.6	6629953
13	340475.4	6629944
14	340468.8	6629597
15	340448.3	6629537
16	340371.8	6629448
17	340399.3	6629473
18	340300.2	6629406
19	340287.7	6629401
20	340060.6	6629313
21	340023.7	6629307
22	339899.4	6629308
23	339756.2	6629266
24	339726.5	6629282
25	339689	6629278
26	339594.4	6629339
27	339464.9	6629646
28	339159.3	6630137
29	339355.3	6630271