



Licence number	L2913/2025/1	
Licence holder	Fortescue Ltd	
ACN	002 594 872	
Registered business address	Level 2 87 Adelaide Terrace EAST PERTH WA 6004	
DWER file number	INS-0002913	
Duration	07/04/2025 to	06/04/2035
Date of issue	07/04/2025	
Premises details	Eliwana Rail Camp CH95 wastewater treatment plant Within Mining Tenement L47/816 MOUNT SHEILA WA 6751 As defined by the premises map and coordinates in Schedules 1 and 2 of the licence	

Prescribed premises category description (Schedule 1, <i>Environmental Protection Regulations 1987</i>)	Assessed design capacity
Category 85: Sewage facility: premises — (a) on which sewage is treated (excluding septic tanks); or, (b) from which treated sewage is discharged onto land or into waters.	50 m ³ per day
Assessed activities directly related to the above categories	
Discharge to land of up to 75 m ³ /day via the WWTP irrigation sprayfield, including up to 25 m ³ /day (averaged over a 5-day period) of waste brine from the camp water treatment plant.	

This licence is granted to the licence holder, subject to the attached conditions, on 07 April 2025, by:

**A/MANAGER, RESOURCE INDUSTRIES
INDUSTRY REGULATION (STATE-WIDE DELIVERY)**

an officer delegated under section 20 of the *Environmental Protection Act 1986* (WA)

Licence history

Date	Reference number	Summary description
07/04/2025	L2913/2025/1	New licence issued

Interpretation

In this licence:

- a) the words ‘including’, ‘includes’ and ‘include’ in conditions mean “including but not limited to”, and similar, as appropriate;
- b) where any word or phrase is given a defined meaning, any other part of speech or other grammatical form of that word or phrase has a corresponding meaning;
- c) where tables are used in a condition, each row in a table constitutes a separate condition;
- d) any reference to an Australian or other standard, guideline, or code of practice in this licence:
 - (i) if dated, refers to that particular version; and
 - (ii) if not dated, refers to the latest version and therefore may be subject to change over time;
- e) unless specified otherwise, any reference to a section of an Act refers to that section of the EP Act; and
- f) unless specified otherwise, all definitions are in accordance with the EP Act.

NOTE: This licence requires specific conditions to be met but does not provide any implied authorisation for other emissions, discharges, or activities not specified in this licence.

Licence conditions

The licence holder must ensure that the following conditions are complied with:

Waste acceptance

1. The licence holder must only accept onto the premises waste of a type that:
 - (a) does not exceed the rate at which that waste is received; and,
 - (b) meets the relevant acceptance specification, as set out in Table 1.

Table 1: Waste acceptance criteria

Waste type	Rate at which waste is received	Acceptance specification
Sewage	50 m ³ /day	Accepted via sewer inflows
RO brine	25 m ³ /day (averaged over a 5-day period)	Accepted from camp water treatment plant via pipeline to WWTP irrigation tanks

Waste processing

2. The licence holder must ensure that the waste types specified in Table 2 are only subjected to the corresponding processes, and subject to the corresponding process specifications as set out in Table 2.

Table 2: Waste processing

Waste type	Processes	Process limits and specifications
Sewage	Physical, biological, and chemical treatment	Must not exceed 50 m ³ /day
RO brine	Dilution with treated effluent from WWTP prior to disposal via the irrigation sprayfield	Must not exceed 25 m ³ /day (averaged over a 5-day period)
Treated effluent from WWTP blended with RO brine	Disposal via the irrigation sprayfield	Irrigated at a rate of no more than 75 m ³ /day

Infrastructure and equipment

3. The licence holder must ensure that the site infrastructure and equipment listed in Table 3 and located at the corresponding infrastructure location is maintained and operated in accordance with the corresponding operational requirement set out in Table 3.

Table 3: Infrastructure and equipment requirements

Site infrastructure and equipment	Operational requirement	Infrastructure location																
WWTP	<p>Containerised/enclosed sewage treatment system.</p> <p>Alarm system maintained to notify the operator of pump fails; high tank levels; and tank overflows.</p> <p>Treatment of up to 50 m³/day sewage through physical, biological and chemical treatment method.</p> <p>Flow meters installed and maintained for ongoing measurement of sewage and RO brine inputs and effluent output.</p> <p>All sewage screenings and WWTP waste sludge removed for disposal to a licensed facility offsite.</p> <p>Earthen bund maintained around WWTP.</p> <p>Treatment of sewage to meet output emission concentrations as follows:</p> <table><tr><th>Parameter</th><th>Concentration</th></tr><tr><td>BOD</td><td><20 mg/L</td></tr><tr><td>Total suspended solids</td><td><30 mg/L</td></tr><tr><td>Total nitrogen</td><td><20 mg/L</td></tr><tr><td>Total phosphorus</td><td><7.5 mg/L</td></tr><tr><td>Faecal coliforms</td><td>≤1,000 cfu/100 mL</td></tr><tr><td>Residual free chlorine</td><td>0.2-2.0 mg/L</td></tr><tr><td>pH</td><td>6.5 – 8.5 pH units</td></tr></table> <p>Acceptance of up to 25 m³/day RO brine (averaged over a 5-day period) from the camp water treatment plant.</p> <p>Blending of RO brine with treated effluent from the WWTP prior to disposal via the irrigation sprayfield.</p>	Parameter	Concentration	BOD	<20 mg/L	Total suspended solids	<30 mg/L	Total nitrogen	<20 mg/L	Total phosphorus	<7.5 mg/L	Faecal coliforms	≤1,000 cfu/100 mL	Residual free chlorine	0.2-2.0 mg/L	pH	6.5 – 8.5 pH units	As shown in Schedule 1 infrastructure location maps – Figure 2
Parameter	Concentration																	
BOD	<20 mg/L																	
Total suspended solids	<30 mg/L																	
Total nitrogen	<20 mg/L																	
Total phosphorus	<7.5 mg/L																	
Faecal coliforms	≤1,000 cfu/100 mL																	
Residual free chlorine	0.2-2.0 mg/L																	
pH	6.5 – 8.5 pH units																	
RO brine pipeline	Flow meter installed and maintained for ongoing measurement of RO brine volumes conveyed to the WWTP irrigation tanks.	Located between camp RO plant and WWTP shown in Schedule 1 infrastructure																

Site infrastructure and equipment	Operational requirement	Infrastructure location
		location map – Figure 2
Irrigation sprayfield	<p>Effluent discharge area to be maintained at 1.7 hectares.</p> <p>Low trajectory large droplet impact sprinklers.</p> <p>Perimeter fence, with 5 m buffer area between sprinkler radius and fence.</p> <p>Warning signage fitted to sprayfield fence to discourage access.</p> <p>Prevent ponding of water on the ground surface (and potential runoff).</p> <p>No irrigation generated runoff, discharge or spray drift occurs beyond the boundary of the sprayfield.</p>	As shown in Schedule 1 infrastructure location maps – Figure 3

Emissions and discharges

Authorised discharge points for emissions

4. The licence holder must ensure that the emissions specified in Table 4 are discharged only from the corresponding discharge point and only at the corresponding discharge point location.

Table 4: Authorised discharge points

Emission	Discharge point	Discharge point location
Treated effluent from WWTP blended with RO brine	Sprinklers within the irrigation spray field	As shown in Schedule 1 infrastructure location maps – Figure 3

Emission limits

5. The licence holder must ensure that effluent discharged from the discharge point listed in Table 5 does not exceed the corresponding limit when monitored in accordance with condition 6.

Table 5: Irrigation emission limits

Discharge point	Parameter	Concentration limit	Loading limit
Irrigation spray field (as shown in Schedule 1 infrastructure location maps – Figure 3)	BOD	20 mg/L	30 kg/ha/day
	Total suspended solids	30 mg/L	Not applicable
	Total nitrogen	20 mg/L	480 kg/ha/year
	Total phosphorus	7.5 mg/L	120 kg/ha/year
	Total dissolved solids	2,800 mg/L	Not applicable
	E.coli	1,000 cfu/100 mL	Not applicable
	Residual chlorine	2.0 mg/L	Not applicable
	pH	6.5 to 8.5	Not applicable

Monitoring

Discharge point monitoring

6. The licence holder must monitor emissions:
- (a) from each monitoring location;
 - (b) for the corresponding parameter;
 - (c) in the corresponding unit;
 - (d) at the corresponding frequency;
 - (e) for the corresponding averaging period;
 - (f) using the corresponding method, as set out in Table 6.

Table 6: Emissions and discharge monitoring

Monitoring location	Parameter	Unit	Frequency	Averaging period	Method
Flow meter at WWTP sewage inflow point	Volume	kL or m ³	Continuous	Cumulative daily	Flow meter device
Flow meter at RO plant discharge point	Volume of RO brine piped to WWTP	kL or m ³	Continuous	5-day average	Flow meter device
Flow meter at WWTP discharge point	Volume of blended WWTP effluent and RO brine discharged to sprayfield	kL or m ³	Continuous	Cumulative daily	Flow meter device
WWTP outlet	BOD	mg/L	Quarterly	Spot sample	AS/NZS 5667.1
	Total Suspended Solids	mg/L			AS/NZS 5667.10
	Total Nitrogen	mg/L			
	Total Phosphorus	mg/L			
	<i>E.coli</i>	cfu/100 mL			
	pH ¹	pH units			
	Residual free chlorine ¹	mg/L			
	Total Dissolved Solids	mg/L			

Note 1: In-field non-NATA accredited analysis permitted.

7. The licence holder must ensure that monitoring undertaken in each quarterly period is undertaken at least 45 days apart.
8. The licence holder must ensure that all non-continuous sampling and analysis undertaken pursuant to condition 6 is undertaken by laboratories with current NATA accreditation for the relevant parameters, unless other specified in Table 6.

Records and reporting

Records

9. The licence holder must record the following information in relation to complaints received by the licence holder (whether received directly from a complainant or forwarded to them by the Department or another party) about any alleged emissions from the premises:
 - (a) the name and contact details of the complainant, (if provided);
 - (b) the time and date of the complaint;
 - (c) the complete details of the complaint and any other concerns or other issues raised; and
 - (d) the complete details and dates of any action taken by the licence holder to investigate or respond to any complaint.
10. The licence holder must maintain accurate and auditable books including the following records, information, reports, and data required by this licence:
 - (a) the calculation of fees payable in respect of this licence;
 - (b) any maintenance of infrastructure that is performed in the course of complying with condition 3 of this licence;
 - (c) monitoring programmes undertaken in accordance with condition 6 of this licence; and
 - (d) complaints received under condition 9 of this licence.
11. The books specified under condition 10 must:
 - (a) be legible;
 - (b) if amended, be amended in such a way that the original version(s) and any subsequent amendments remain legible and are capable of retrieval;
 - (c) be retained by the licence holder for the duration of the licence; and
 - (d) be available to be produced to an inspector or the CEO as required.

Reporting

12. The licence holder must:
 - (a) undertake an audit of their compliance with the conditions of this licence during the preceding annual period, and
 - (b) prepare and submit to the CEO by 31 March each year an Annual Audit Compliance Report in the approved form.
13. The licence holder must:
 - (a) prepare an Environmental Report that provides information in accordance with Table 7 for the preceding two annual periods, and
 - (b) submit that Environmental Report to the CEO by 31 March 2027 and biennially thereafter.

Table 7: Environmental reporting requirements

Condition	Requirement
6	<p>Monitoring results and reporting, including:</p> <ul style="list-style-type: none"> • monthly cumulative volume (in m³ or kL) of raw sewage received at the WWTP, presented in table format. • monthly cumulative volume (in m³ or kL) of RO brine received at the WWTP, presented in table format. • monthly cumulative volume (in m³ or kL) of treated wastewater and RO brine blend discharged from the WWTP, presented in table format. • WWTP effluent (treated wastewater and RO brine blend) parameter monitoring data, presented in table format. • an assessment and interpretation of the data, including comparison to condition 5 emission limits. • copies of laboratory sample analysis reports.
2 and 5	Summary of any design capacity and emission limit exceedances and corrective actions taken.
9	Complaints summary and associated actions taken.

Definitions

In this licence, the terms in Table 8 have the meanings defined.

Table 8: Definitions

Term	Definition
ACN	Australian Company Number.
Annual Audit Compliance Report (AACR)	means a report submitted in a format approved by the CEO (relevant guidelines and templates are available on the Department's website).
annual period	a 12 month period commencing from 1 January until 31 December of the immediately following year.
biennially	means every two years.
BOD	Biochemical Oxygen Demand.
books	has the same meaning given to that term under the EP Act.
CEO	means Chief Executive Officer of the department. "submit to / notify the CEO" (or similar), means either: Director General Department administering the <i>Environmental Protection Act 1986</i> Locked Bag 10 Joondalup DC WA 6919 or: info@dwer.wa.gov.au
department; DWER	means the department established under section 35 of the <i>Public Sector Management Act 1994</i> (WA) and designated as responsible for the administration of the EP Act, which includes Part V Division 3.
discharge	has the same meaning given to that term under the EP Act.
emission	has the same meaning given to that term under the EP Act.
EP Act	<i>Environmental Protection Act 1986</i> (WA).
EP Regulations	<i>Environmental Protection Regulations 1987</i> (WA).
licence	refers to this document, which evidences the grant of a licence by the CEO under section 57 of the EP Act, subject to the specified conditions contained within.
licence holder	refers to the occupier of the premises, being the person specified on the front of the licence as the person to whom this licence has been granted.
premises	refers to the premises to which this licence applies, as specified at the front of this licence and as shown on the premises map in Schedule 1, Figure 1 of this licence.
prescribed	has the same meaning given to that term under the EP Act.

Term	Definition
premises	
RO brine	means brine effluent from the camp water treatment (reverse osmosis) plant.
RO plant	means the camp water treatment (reverse osmosis) plant.
waste	has the same meaning given to that term under the EP Act.
WWTP	means the premises waste water (sewage) treatment plant.

END OF CONDITIONS

Schedule 1: Maps

Premises map

The boundary of the prescribed premises is shown by the green polygon in the map below (Figure 1).

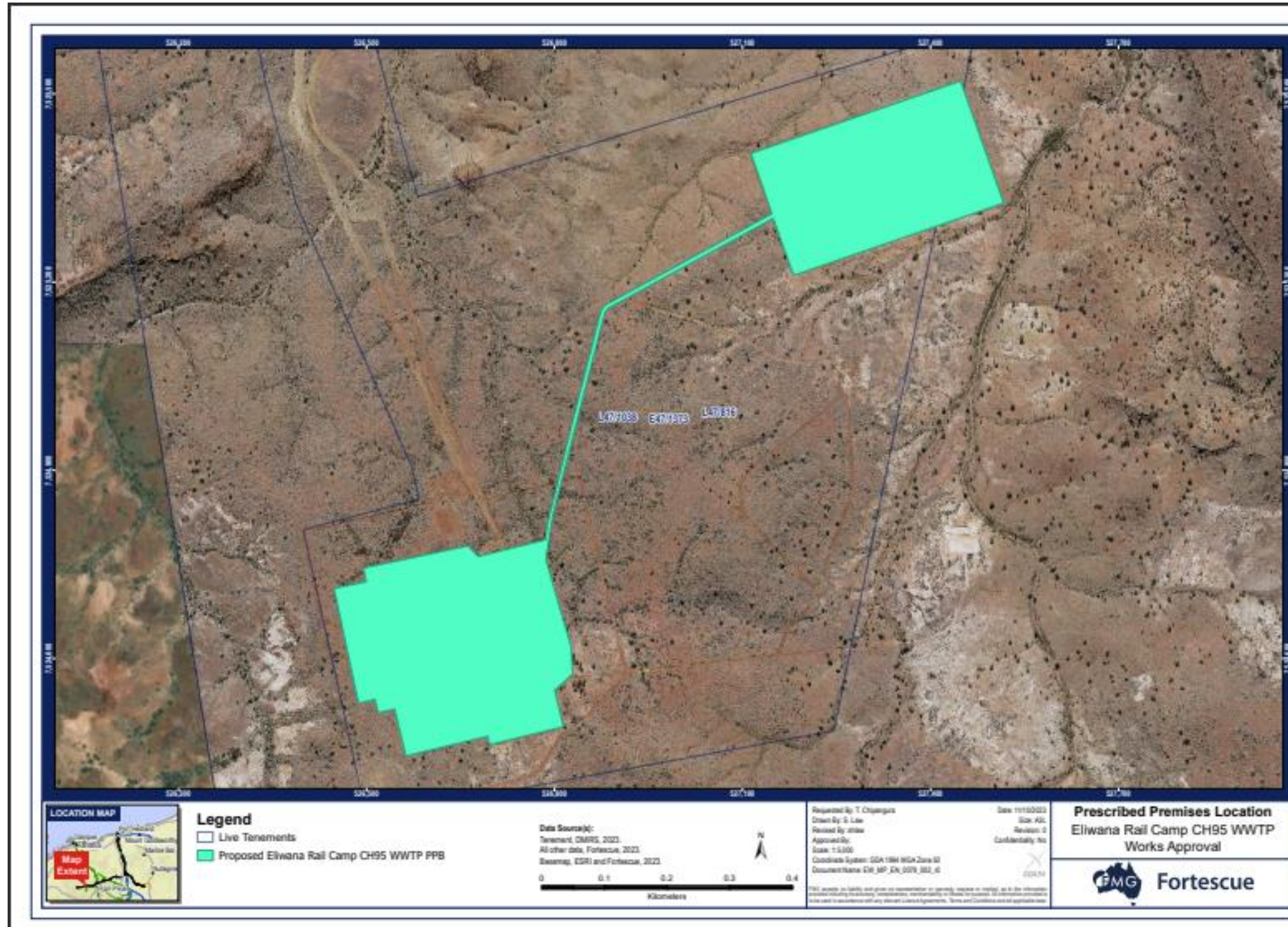


Figure 1: Map of the boundary of the prescribed premises.

Infrastructure location maps

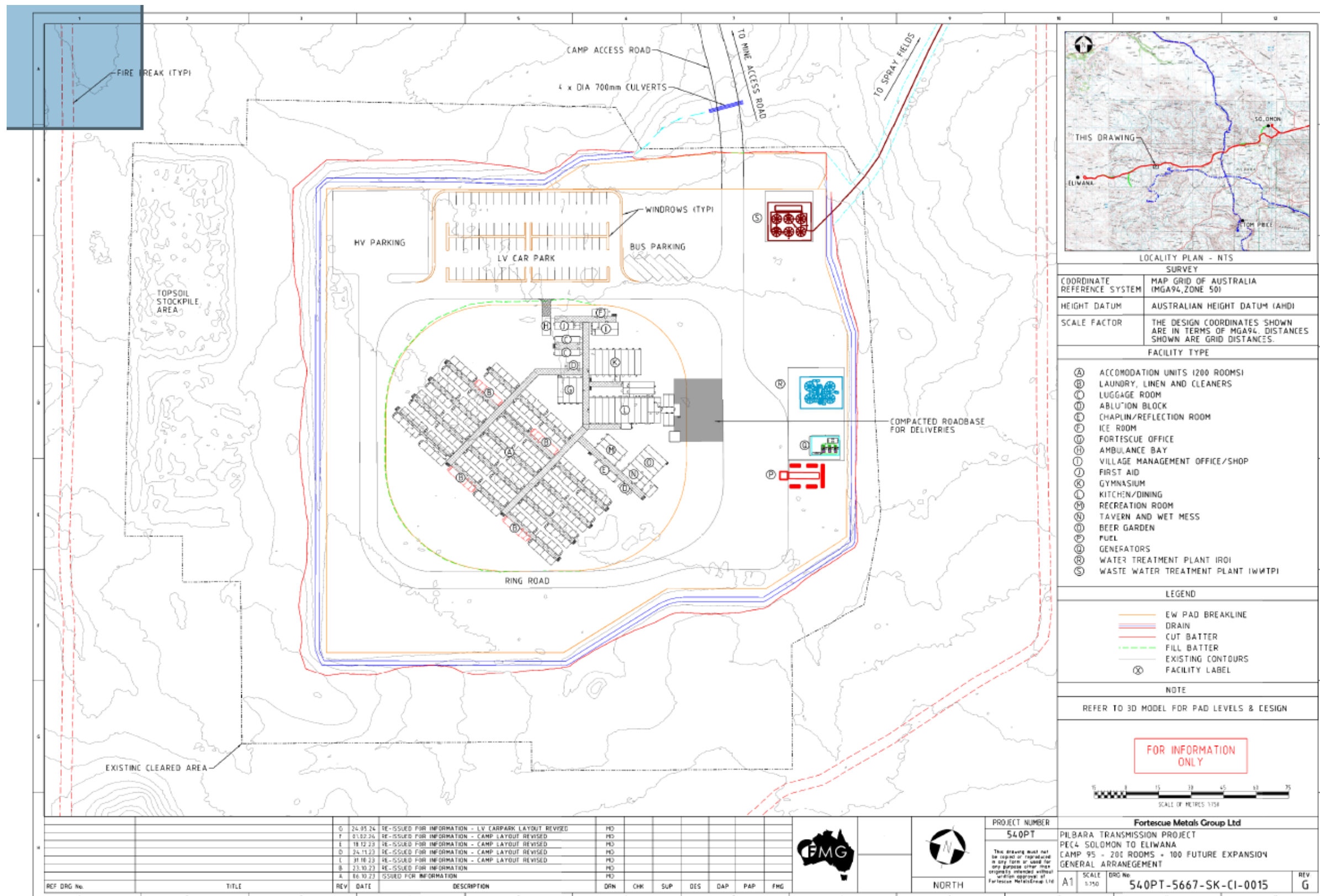


Figure 2: Map of the WWTP and associated activity infrastructure location

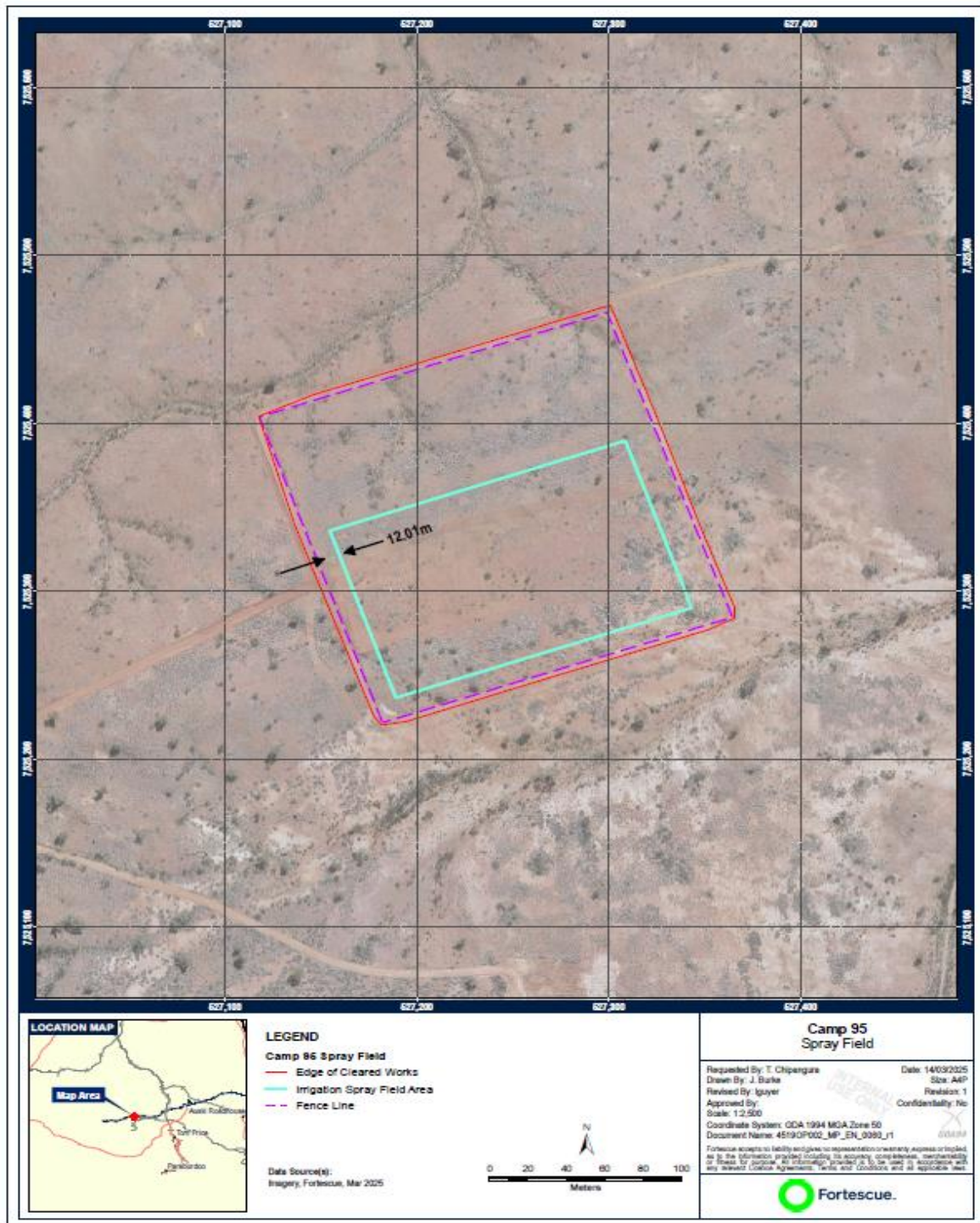


Figure 3: Map of the irrigation sprayfield location

Schedule 2: Premises boundary

The corners of the premises boundary are the coordinates listed in Table 9.

Table 9: Premises boundary coordinates (GDA94 MGA Zone 50)

	Easting	Northing
1.	527516.7	7525326
2.	527181.6	7525211
3.	527149.2	7525301
4.	527149	7525302
5.	526886	7525159
6.	526880.7	7525152
7.	526874.5	7525131
8.	526811.8	7524885
9.	526803.3	7524852
10.	526798.7	7524834
11.	526795.4	7524819
12.	526791.1	7524790
13.	526790.3	7524785
14.	526789.2	7524778
15.	526786.1	7524757
16.	526813.4	7524664
17.	526826.5	7524618
18.	526828.8	7524575
19.	526800.2	7524549
20.	526814.2	7524491
21.	526696.4	7524463
22.	526693.2	7524476
23.	526562.9	7524445
24.	526544.8	7524520
25.	526518.7	7524513
26.	526513.5	7524535
27.	526487.2	7524529
28.	526448.3	7524712
29.	526499.8	7524723
30.	526495.2	7524744

	Easting	Northing
31.	526662.2	7524780
32.	526678.4	7524763
33.	526785.6	7524789
34.	526790	7524821
35.	526798.6	7524853
36.	526830.5	7524983
37.	526873.9	7525152
38.	526877.9	7525160
39.	526882.5	7525164
40.	526892.2	7525169
41	527146.8	7525309
42	527146.2	7525311
43.	527113.5	7525405
44.	527447.9	7525521
45.	527516.7	7525326