



Works Approval

Works approval number W2922/2025/1

Works approval holder FMR Investments Pty Ltd
ACN 009 411 349

Registered business address Suite 11, 2 Hardy Street,
South Perth, Western Australia 6151

EO application number APP-0026912

Duration 11/04//2025 to 11/04/2028

Date of issue 11/04/2025

Premises details Barbara Surprise Project
Part of Lot 103 on Deposited Plan 40395
Certificate of Title Volume 2668 Folio 419
Great Eastern Highway, Coolgardie, WA 6429
As defined by the coordinates in Schedule 2

Prescribed premises category description (Schedule 1, <i>Environmental Protection Regulations 1987</i>)	Assessed design capacity
Category 6: Mine dewatering	1,500,000 tonnes per annual period

This works approval is granted to the works approval holder, subject to the attached conditions, on 11 April 2025, by:

MANAGER, RESOURCE INDUSTRIES

INDUSTRY REGULATION (STATEWIDE DELIVERY)

an officer delegated under section 20 of the *Environmental Protection Act 1986* (WA)

Works approval history

Date	Reference number	Summary of changes
11/04/2025	W2922/2025/1	Works approval granted.

Interpretation

In this works approval:

- (a) the words 'including', 'includes' and 'include' in conditions mean "including but not limited to", and similar, as appropriate;
- (b) where any word or phrase is given a defined meaning, any other part of speech or other grammatical form of that word or phrase has a corresponding meaning;
- (c) where tables are used in a condition, each row in a table constitutes a separate condition;
- (d) any reference to an Australian or other standard, guideline, or code of practice in this works approval:
 - (i) if dated, refers to that particular version; and
 - (ii) if not dated, refers to the latest version and therefore may be subject to change over time;
- (e) unless specified otherwise, any reference to a section of an Act refers to that section of the EP Act; and
- (f) unless specified otherwise, all definitions are in accordance with the EP Act.

NOTE: This works approval requires specific conditions to be met but does not provide any implied authorisation for other emissions, discharges, or activities not specified in this works approval.

Works approval conditions

The works approval holder must ensure that the following conditions are complied with:

Construction phase

Infrastructure and equipment

1. The works approval holder must:
 - (a) install the infrastructure;
 - (b) in accordance with the corresponding installation requirements; and
 - (c) at the corresponding infrastructure location
 as set out in Table 1.

Table 1: Installation requirements

	Infrastructure	Installation requirements	Infrastructure location
1.	Bakers Flat Pit to Surprise Pit pipeline	a) Constructed using materials that meet applicable Australian/New Zealand Standards including:	As depicted in Schedule 1, Figure 2
2.	Shirl Pit to Surprise Pit pipeline	i. AS/NZS 4129:2008 Fittings for polyethylene pipes for pressure applications; ii. AS/NZS 4130:2009 Polyethylene pipes for pressure applications; and iii. AS/NZS 4131:2010 Polyethylene compounds for pressure pipes and fittings. b) Must be located within earthen bunded corridors to ensure leaks are contained; c) Must be fitted with isolation valves or automatic leak detection sensors; and d) Ensure that the discharge pipeline is located far enough over the Surprise Pit crest or down the pit ramp to reduce exposure to wind and prevent scouring of pit walls.	As depicted in Schedule 1, Figure 2

Compliance reporting

2. The works approval holder must within 30 calendar days of an item of infrastructure required by condition 1 being installed:
 - (a) undertake an audit of their compliance with the requirements of condition 1; and
 - (b) prepare and submit to the CEO an Environmental Compliance Report on that compliance.

3. The Environmental Compliance Report required by condition 2, must include as a minimum the following:
- (a) certification by a title of a suitably qualified engineer that the dewatering pipelines or component(s) thereof, as specified in condition 1, have been constructed in accordance with the relevant requirements specified in condition 1;
 - (b) as constructed plans or photographs and a detailed site plan for each item of infrastructure or component of infrastructure specified in condition 1; and
 - (c) be signed by a person authorised to represent the works approval holder and contains the printed name and position of that person.

Time limited operations phase

Commencement and duration

4. The works approval holder may only commence time limited operations for an item of infrastructure identified in condition 6 where the Environmental Compliance Report as required by condition 2 has been submitted by the works approval holder for that item of infrastructure.
5. The works approval holder may conduct time limited operations for an item of infrastructure specified in condition 6:
- (a) for a period not exceeding 180 calendar days from the day the works approval holder meets the requirements of condition 4 for that item of infrastructure; or
 - (b) until such time as a licence for that item of infrastructure is granted in accordance with Part V of the Environmental Protection Act 1986, if one is granted before the end of the period specified in condition 5(a).

Time limited operations requirements and emission limits

6. During time limited operations, the works approval holder must ensure that the premises infrastructure and equipment listed in Table 2 and located at the corresponding infrastructure location is maintained and operated in accordance with the corresponding operational requirement set out in Table 2.

Table 2: Infrastructure and equipment requirements during time limited operations

	Site infrastructure and equipment	Operational requirements	Infrastructure location
1.	Bakers Flat Pit to Surprise Pit pipeline	a) Undertake daily inspections to check for pipeline leaks or ruptures (when in use); and	As depicted in Schedule 1, Figure 2
2.	Shirl Pit to Surprise Pit pipeline	b) Shutdown the required section of the pipeline system, if any leaks or spills from pumps or pipelines are detected, until the leak has been verified and/or repaired.	

7. During time limited operations, the works approval holder must ensure that the emission(s) specified in Table 3, are discharged only from the corresponding discharge point(s) and only at the corresponding discharge point location(s).

Table 3: Authorised discharge points

	Emission	Discharge point	Discharge point location
1.	Water from Bakers Flat Pit and Shirl Pit	Surprise Pit	As depicted in Schedule 1, Figure 2

8. During time limited operations, the works approval holder must ensure that a minimum freeboard of 6 meters below crest level is maintained at all times within Surprise Pit.

Monitoring during time limited operations

9. The works approval holder must monitor emissions during time limited operations in accordance with Table 4.

Table 4: Emissions and discharge monitoring during time limited operations

Discharge point	Frequency	Parameter	Unit	Averaging period	Method
Surprise Pit	Monthly ¹ (when discharging)	Volume of Water discharged	kL	Continuous	In accordance with AS/NZS 5667.1
		Standing water level	m AHD meters below crest level	Spot sample	
		pH ²	pH units		
		Electrical Conductivity (EC) ²	µS/cm		

Note 1: Monthly monitoring undertaken at least 15 days apart.

Note 2: In-field non-NATA accredited analysis permitted.

Compliance reporting

10. The works approval holder must submit to the CEO a report on the time limited operations within 30 calendar days of the completion date of time limited operations or 30 calendar days before the expiration date of the works approval, whichever is the sooner.

Records and reporting (general)

11. The works approval holder must record the following information in relation to complaints received by the works approval holder (whether received directly from a complainant or forwarded to them by the Department or another party) about any alleged emissions from the premises:
- (a) the name and contact details of the complainant, (if provided);
 - (b) the time and date of the complaint;

- (c) the complete details of the complaint and any other concerns or other issues raised; and
 - (d) the complete details and dates of any action taken by the works approval holder to investigate or respond to any complaint.
- 12.** The works approval holder must maintain accurate and auditable books including the following records, information, reports, and data required by this works approval:
 - (a) the works conducted in accordance with condition 1;
 - (b) any maintenance of infrastructure that is performed in the course of complying with condition 6;
 - (c) monitoring programmes undertaken in accordance with condition 9; and
 - (d) complaints received under condition 11.
- 13.** The books specified under condition 12 must:
 - (a) be legible;
 - (b) if amended, be amended in such a way that the original version(s) and any subsequent amendments remain legible and are capable of retrieval;
 - (c) be retained by the works approval holder for the duration of the works approval; and
 - (d) be available to be produced to an inspector or the CEO as required.

Definitions

In this works approval, the terms in Table 5 have the meanings defined.

Table 5: Definitions

Term	Definition
annual period	a 12 month period commencing from 1 January until 31 December of the immediately following year.
books	has the same meaning given to that term under the EP Act.
CEO	means Chief Executive Officer. CEO for the purposes of notification means: Director General Department administering the <i>Environmental Protection Act 1986</i> Locked Bag 10 Joondalup DC WA 6919 info@dwer.wa.gov.au
Department	means the department established under section 35 of the <i>Public Sector Management Act 1994</i> and designated as responsible for the administration of Part V Division 3 of the EP Act.
discharge	has the same meaning given to that term under the EP Act.
emission	has the same meaning given to that term under the EP Act.
Environmental Compliance Report	means a report to satisfy the CEO that the conditioned infrastructure has been installed in accordance with the works approval.
EP Act	<i>Environmental Protection Act 1986</i> (WA).
EP Regulations	<i>Environmental Protection Regulations 1987</i> (WA).
premises	the premises to which this licence applies, as specified at the front of this licence and as shown on the premises map (Figure 1) in Schedule 1 to this works approval.
prescribed premises	has the same meaning given to that term under the EP Act.
time limited operations	refers to the operation of the infrastructure and equipment identified under this works approval that is authorised for that purpose, subject to the relevant conditions.
waste	has the same meaning given to that term under the EP Act.
works approval	refers to this document, which evidences the grant of the works approval by the CEO under section 54 of the EP Act, subject to the conditions.

Term	Definition
works approval holder	refers to the occupier of the premises being the person to whom this works approval has been granted, as specified at the front of this works approval.

END OF CONDITIONS

Schedule 1: Maps

Premises map

The boundary of the prescribed premises is shown in the map below (Figure 1).

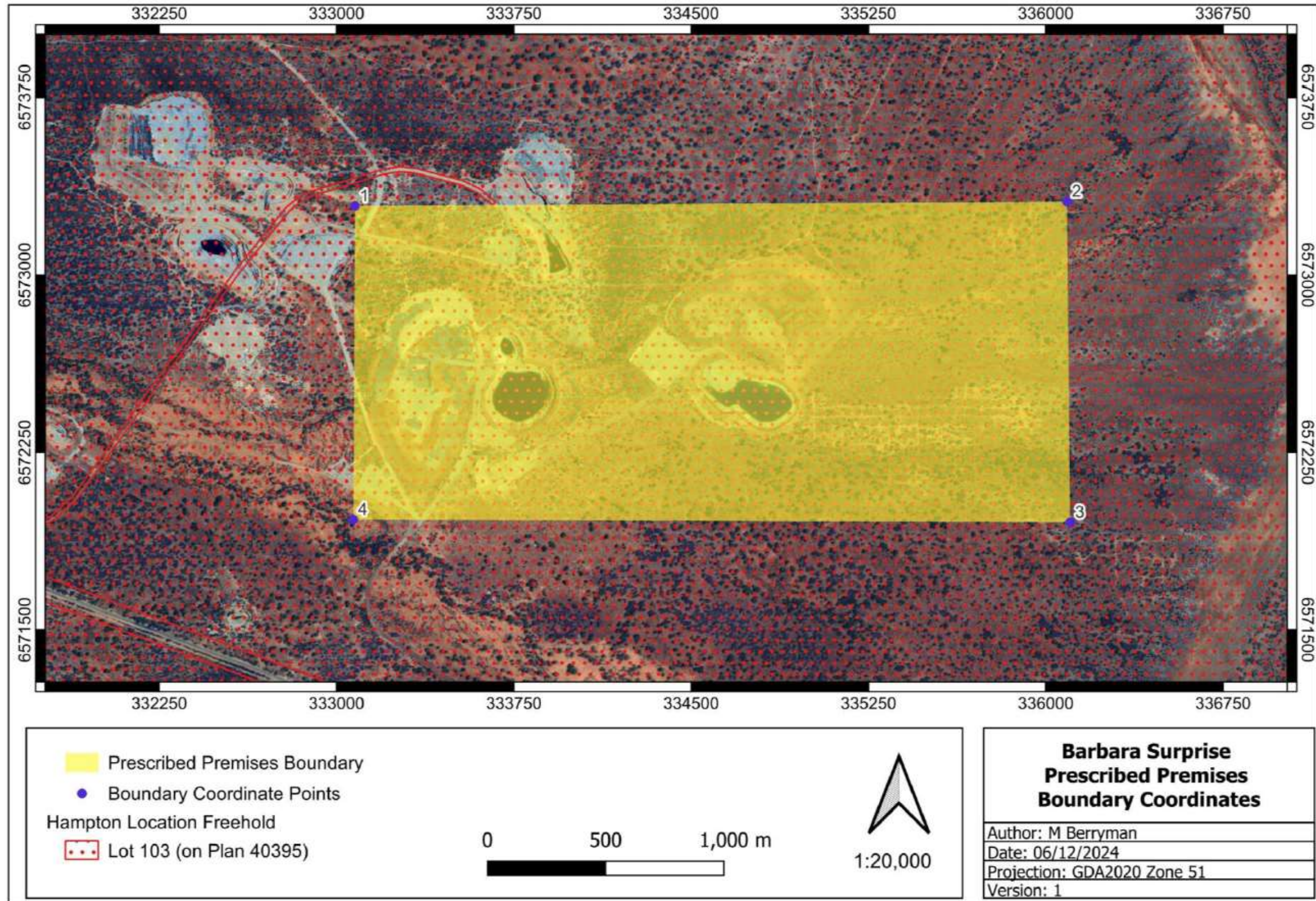


Figure 1: Map of the boundary of the prescribed premises

The infrastructure layout is shown in the map below (Figure 2).

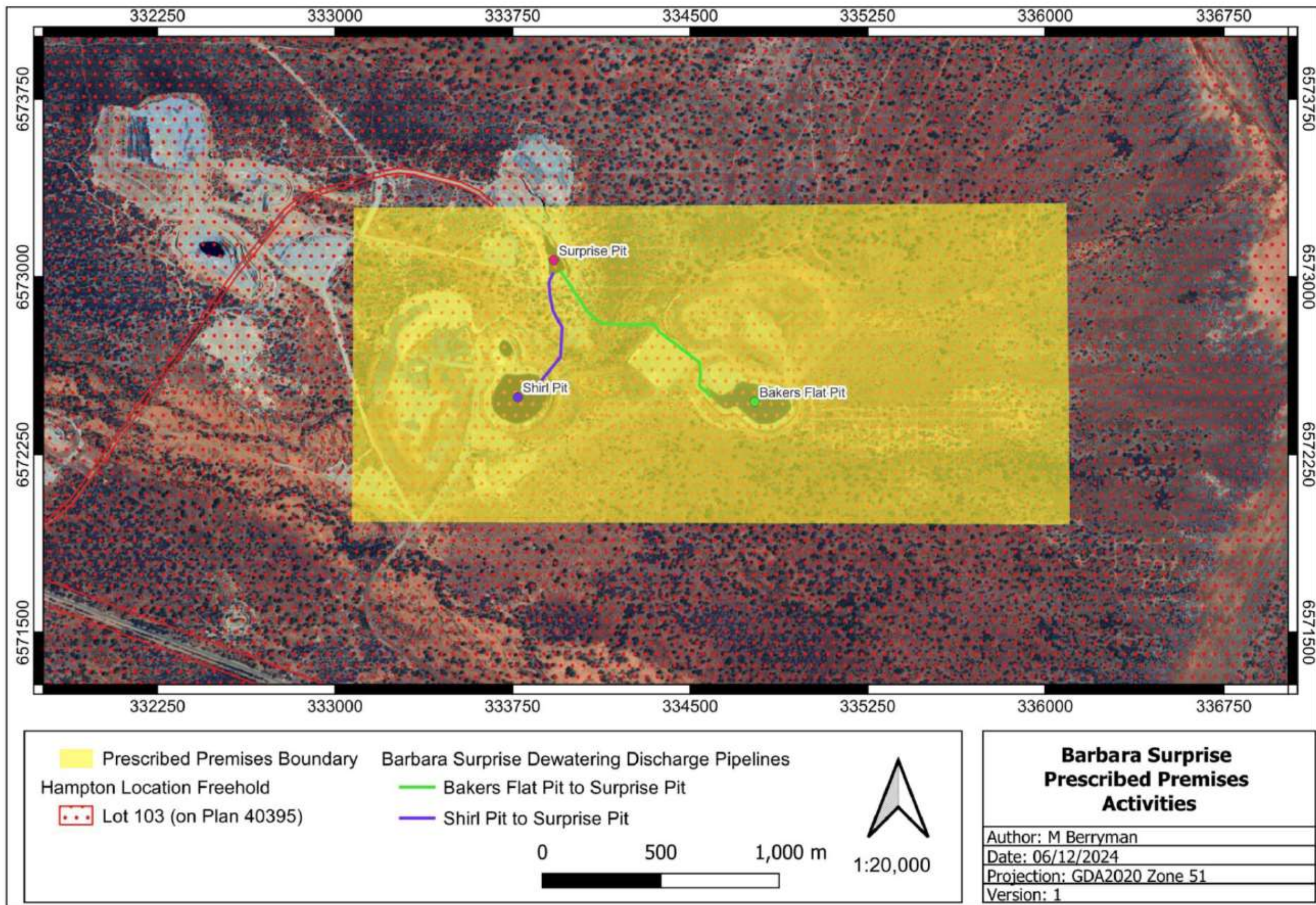


Figure 2: Infrastructure layout

Schedule 2: Premises boundary

The corners of the premises boundary are the coordinates listed in Table 6.

Table 6: Premises boundary coordinates (GDA2020)

	Easting	Northing	Zone
1.	-30.96206	121.25232	51
2.	-30.96232	121.28386	51
3.	-30.97455	121.28378	51
4.	-30.97402	121.25203	51