



Works Approval

Works approval number	W2992/2025/1	
Works approval holder	Norton Gold Fields Pty Ltd	
ACN	112 287 797	
Registered business address	Viskovich House Level 1, 377 Hannan Street, Kalgoorlie WA 6430	
DWER file number	APP-0026154	
Duration	29/07/2025 to	28/07/2030
Date of issue	29/07/2025	
Premises details	Binduli Operations Legal description - Part of mining tenements M26/446 and M26/447 KANOWNA WA 6430 As defined by the premises map in Schedule 1 and the coordinates outlined in Schedule 2.	

Prescribed premises category description (Schedule 1, <i>Environmental Protection Regulations 1987</i>)	Assessed production / design capacity
Category 5: Processing or beneficiation of metallic or non-metallic ore	2,000,000 tonnes per annual period

This works approval is granted to the works approval holder, subject to the attached conditions, on 29 July 2025, by:

Abbie Crawford
Manager, Waste Industries

Officer delegated under section 20 of the Environmental Protection Act 1986

Works approval history

Date	Reference number	Summary of changes
29 July 2025	W2992/2025/1	Works approval granted.

Interpretation

In this works approval:

- (a) the words 'including', 'includes' and 'include' in conditions mean "including but not limited to", and similar, as appropriate;
- (b) where any word or phrase is given a defined meaning, any other part of speech or other grammatical form of that word or phrase has a corresponding meaning;
- (c) where tables are used in a condition, each row in a table constitutes a separate condition;
- (d) any reference to an Australian or other standard, guideline, or code of practice in this works approval:
 - (i) if dated, refers to that particular version; and
 - (ii) if not dated, refers to the latest version and therefore may be subject to change over time;
- (e) unless specified otherwise, any reference to a section of an Act refers to that section of the EP Act; and
- (f) unless specified otherwise, all definitions are in accordance with the EP Act.

NOTE: This works approval requires specific conditions to be met but does not provide any implied authorisation for other emissions, discharges, or activities not specified in this works approval.

Works approval conditions

The works approval holder must ensure that the following conditions are complied with:

Construction phase

Infrastructure and equipment

1. The works approval holder must:
 - (a) install the infrastructure and/or equipment;
 - (b) in accordance with the corresponding installation requirements; and
 - (c) at the corresponding infrastructure location; and
 as set out in Table 1.

Table 1: Design and installation requirements

Infrastructure	Design and installation requirements	Infrastructure location
Ore crushing and screening plant	Installed as per the manufacturer's requirements comprising of: <ul style="list-style-type: none"> • Primary Crusher - MetsoNW120 (or equivalent) capable of up to 2MTPA • Secondary Crusher - Metso330GPS (or equivalent) • Secondary Screen - 200-CR-0022 - Nordberg CVB2060-4 (or equivalent) • Tertiary Crusher - Metso330GPS (or equivalent) • Tertiary Screen - 200-CR-0022 - Nordberg CVB2060-4 (or equivalent) • Auxiliary plant and equipment, including: <ul style="list-style-type: none"> ○ 12 x conveyors ○ 2 x hoppers ○ 3 x feeders ○ Tramp Metal Magnet 	Shown in Schedule 1, Figures 2, 3 and 4
Sedimentation pond	<ul style="list-style-type: none"> • 10,000m³ volume • Compacted soil layer • 1.5mm HDPE liner 	Shown in Schedule 1, Figure 2

Compliance reporting

2. The works approval holder must within 60 calendar days of an item of infrastructure or equipment required by condition 1 being constructed and/or installed:
 - (a) undertake an audit of their compliance with the requirements of condition 1; and
 - (b) prepare and submit to the CEO an Environmental Compliance Report on that compliance.

- 3.** The Environmental Compliance Report required by condition 2, must include as a minimum the following:
- (a) certification by a suitably qualified civil or structural engineer that the items of infrastructure or component(s) thereof, as specified in condition 1, have been constructed in accordance with the relevant requirements specified in condition 1;
 - (b) as constructed plans and a detailed site plan for each item of infrastructure or component of infrastructure specified in condition 1; and
 - (c) be signed by a person authorised to represent the works approval holder and contains the printed name and position of that person.

Time limited operations phase

Commencement and duration

- 4.** The works approval holder may only commence time limited operations for an item of infrastructure identified in condition 1 where the Environmental Compliance Report as required by conditions 2 and 3 has been submitted by the works approval holder for that item of infrastructure.
- 5.** The works approval holder may conduct time limited operations for an item of infrastructure specified in condition 6:
- (a) for a period not exceeding 180 calendar days from the day the works approval holder meets the requirements of condition 4 for that item of infrastructure; or
 - (b) until such time as a licence for that item of infrastructure is granted in accordance with Part V of the *Environmental Protection Act 1986*, if one is granted before the end of the period specified in condition 5(a).

Time limited operations requirements and emission limits

- 6.** During time limited operations, the works approval holder must ensure that the premises infrastructure and/or equipment listed in Table 2 and located at the corresponding infrastructure location is maintained and operated in accordance with the corresponding operational requirement set out in Table 2.

Table 2: Infrastructure and equipment requirements during time limited operations

Site infrastructure and equipment	Operational requirements	Infrastructure location
Ore crushing and screening plant	<ul style="list-style-type: none"> Ore crushing and screening not to exceed 2,000,000 tonnes per annum throughput. Water spray bars to be activated on screening infrastructure when visible dust is detected. Visual daily monitoring of dust Record volumes of ore processed through the ore crushing and screening plant Maintain and operate as per the manufacturer's/design requirements Water carts must be available at the premises to manage dust emissions from operational areas. 	Shown in Schedule 1, Figure 2
Sedimentation pond	<ul style="list-style-type: none"> Must capture and store surface water run-off from the Dry Plant area Must be managed to prevent damage to and ensure the integrity of the HDPE liner Must maintain a minimum operating freeboard of 0.3 m. 	

Compliance reporting

7. The works approval holder must submit to the CEO a report on the time limited operations within 30 calendar days of the completion date of time limited operations or 60 calendar days before the expiration date of the works approval, whichever is sooner.
8. The works approval holder must ensure the report required by condition 7 includes the following:
 - (a) a summary of the time limited operations, including timeframes and the amount of ore processed;
 - (b) a review of operational performance and compliance against the conditions of the works approval; and
 - (c) where the manufacturer's design specifications and the conditions of this works approval have not been met, what measures will the works approval holder take to meet them, and what timeframes will be required to implement those measures.

Records and reporting (general)

9. The works approval holder must record the following information in relation to complaints received by the works approval holder (whether received directly from a complainant or forwarded to them by the Department or another party) about any alleged emissions from the premises:
 - (a) the name and contact details of the complainant, (if provided);

- (b) the time and date of the complaint;
 - (c) the complete details of the complaint and any other concerns or other issues raised; and
 - (d) the complete details and dates of any action taken by the works approval holder to investigate or respond to any complaint.
- 10.** The works approval holder must maintain accurate and auditable books including the following records, information, reports, and data required by this works approval:
- (a) the works conducted in accordance with condition 1;
 - (b) any maintenance of infrastructure that is performed in the course of complying with this works approval;
 - (c) complaints received under condition 9.
- 11.** The books specified under condition 10 must:
- (a) be legible;
 - (b) if amended, be amended in such a way that the original version(s) and any subsequent amendments remain legible and are capable of retrieval;
 - (c) be retained by the works approval holder for the duration of the works approval; and
 - (d) be available to be produced to an inspector or the CEO as required.

Definitions

In this works approval, the terms in Table 3 have the meanings defined.

Table 3: Definitions

Term	Definition
books	has the same meaning given to that term under the EP Act.
CEO	means Chief Executive Officer. CEO for the purposes of notification means: Director General Department administering the <i>Environmental Protection Act 1986</i> Locked Bag 10 Joondalup DC WA 6919 info@dwer.wa.gov.au
Department	means the department established under section 35 of the <i>Public Sector Management Act 1994</i> and designated as responsible for the administration of Part V Division 3 of the EP Act.
discharge	has the same meaning given to that term under the EP Act.
emission	has the same meaning given to that term under the EP Act.
Environmental Compliance Report	means a report to satisfy the CEO that the conditioned infrastructure and/or equipment has been constructed and/or installed in accordance with the works approval.
EP Act	<i>Environmental Protection Act 1986</i> (WA).
EP Regulations	Environmental Protection Regulations 1987 (WA).
premises	the premises to which this works approval applies, as specified at the front of this works approval, as shown on the premises map Figure 1 in Schedule 1 and coordinates in schedule 2 to this works approval.
prescribed premises	has the same meaning given to that term under the EP Act.
Suitably qualified civil or structural engineer	means a person who: (a) holds a Bachelor of Engineering degree recognised by Engineers Australia; and (b) has a minimum of five years of experience working in a supervisory role in civil or structural engineering; and (c) is employed by an independent third party external to the Works Approval Holder's business; or is otherwise approved in writing by the CEO to act in this capacity.
time limited operations	refers to the operation of the infrastructure and equipment identified under this works approval that is authorised for that purpose, subject to the relevant conditions.
waste	has the same meaning given to that term under the EP Act.

Term	Definition
works approval	refers to this document, which evidences the grant of the works approval by the CEO under section 54 of the EP Act, subject to the conditions.
works approval holder	refers to the occupier of the premises being the person to whom this works approval has been granted, as specified at the front of this works approval.

END OF CONDITIONS

Schedule 1: Maps

Premises map

The boundary of the prescribed premises is shown in the map below.

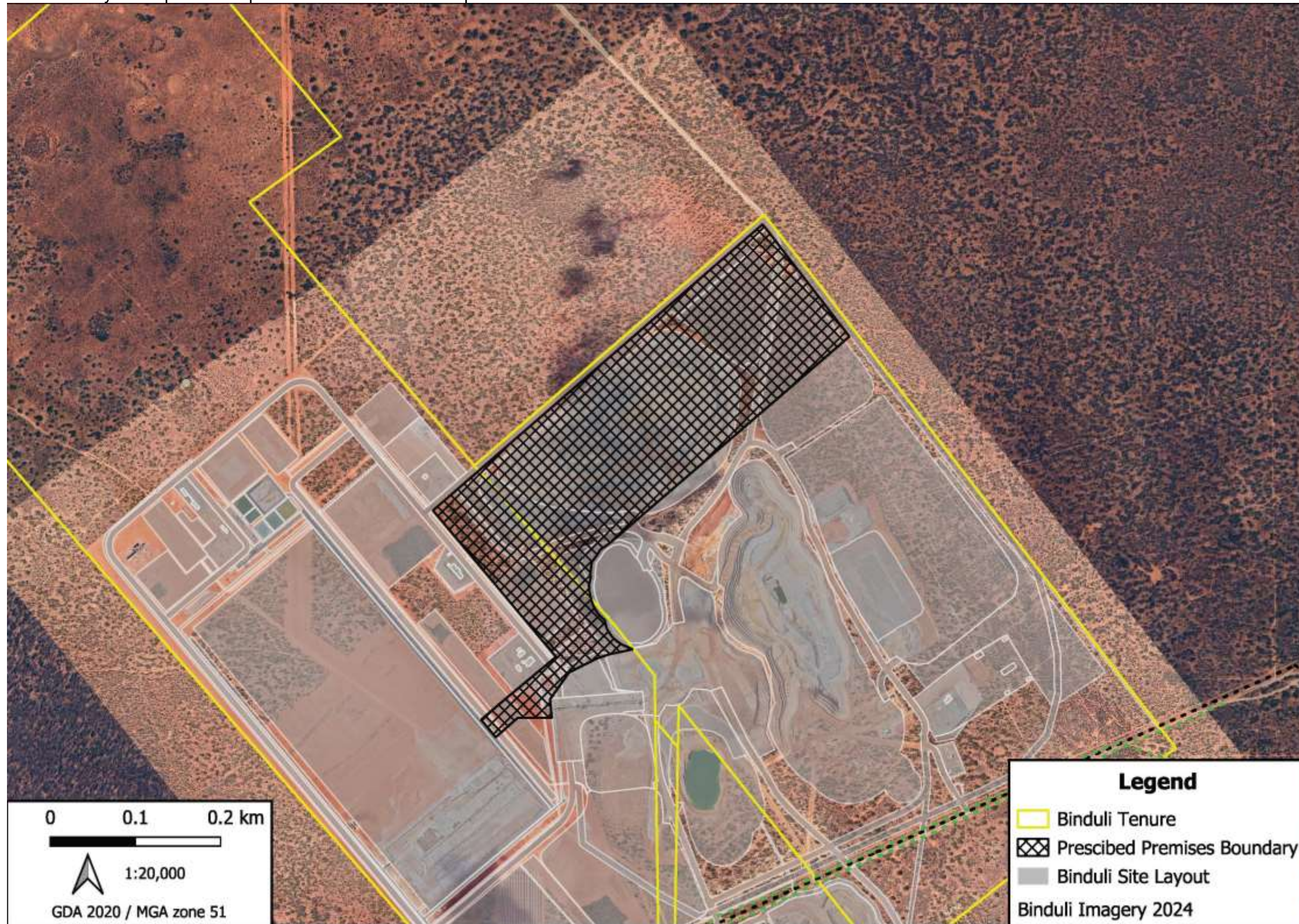
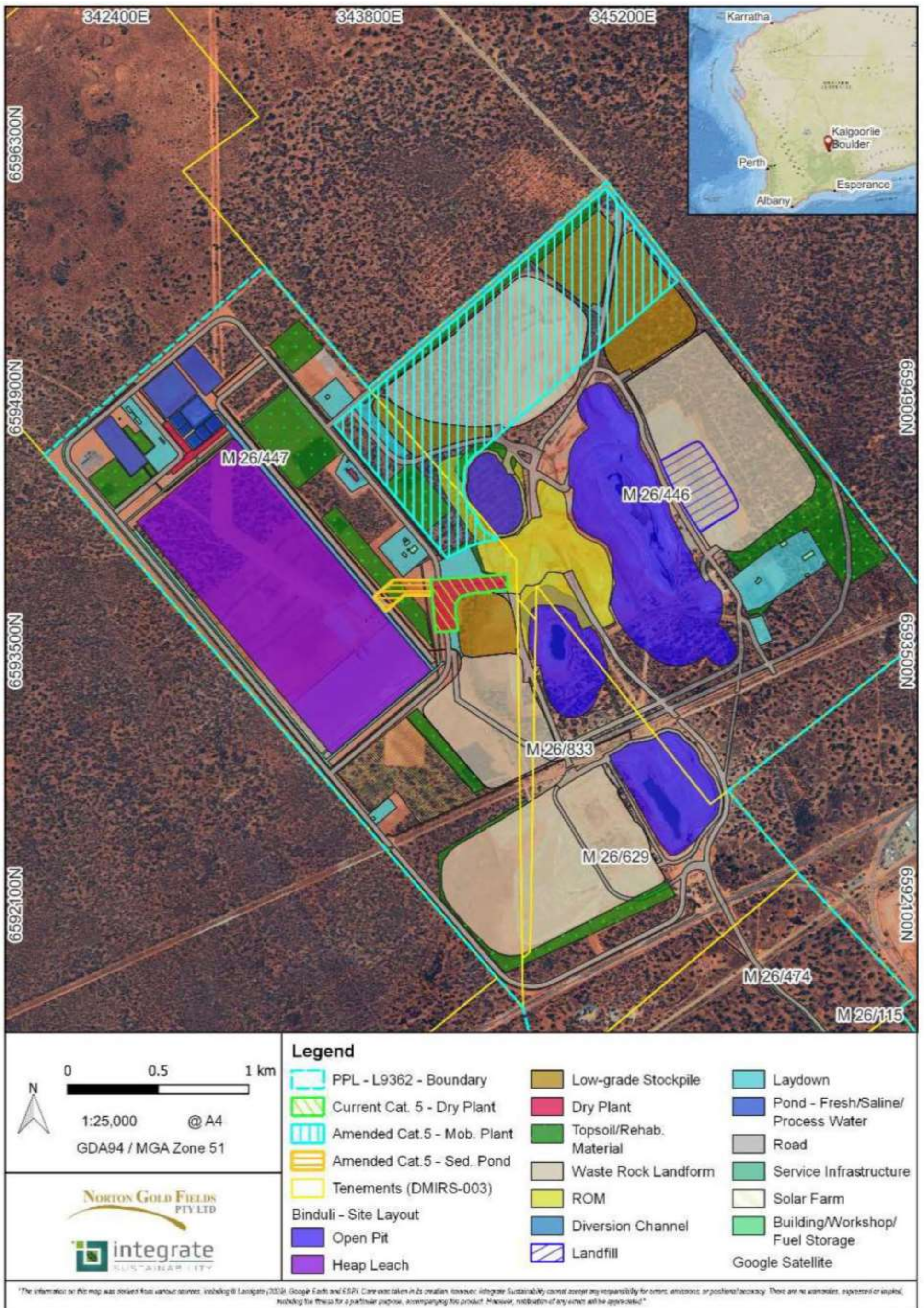


Figure 1: Premises map



Task 4: Binduli Approvals
Figure 2: Site layout

202504_NGF_Binduli_Works Approval Cat 5 Activity Locations & PPL Boundary & Site Layout_v7

Apr 2025

HL

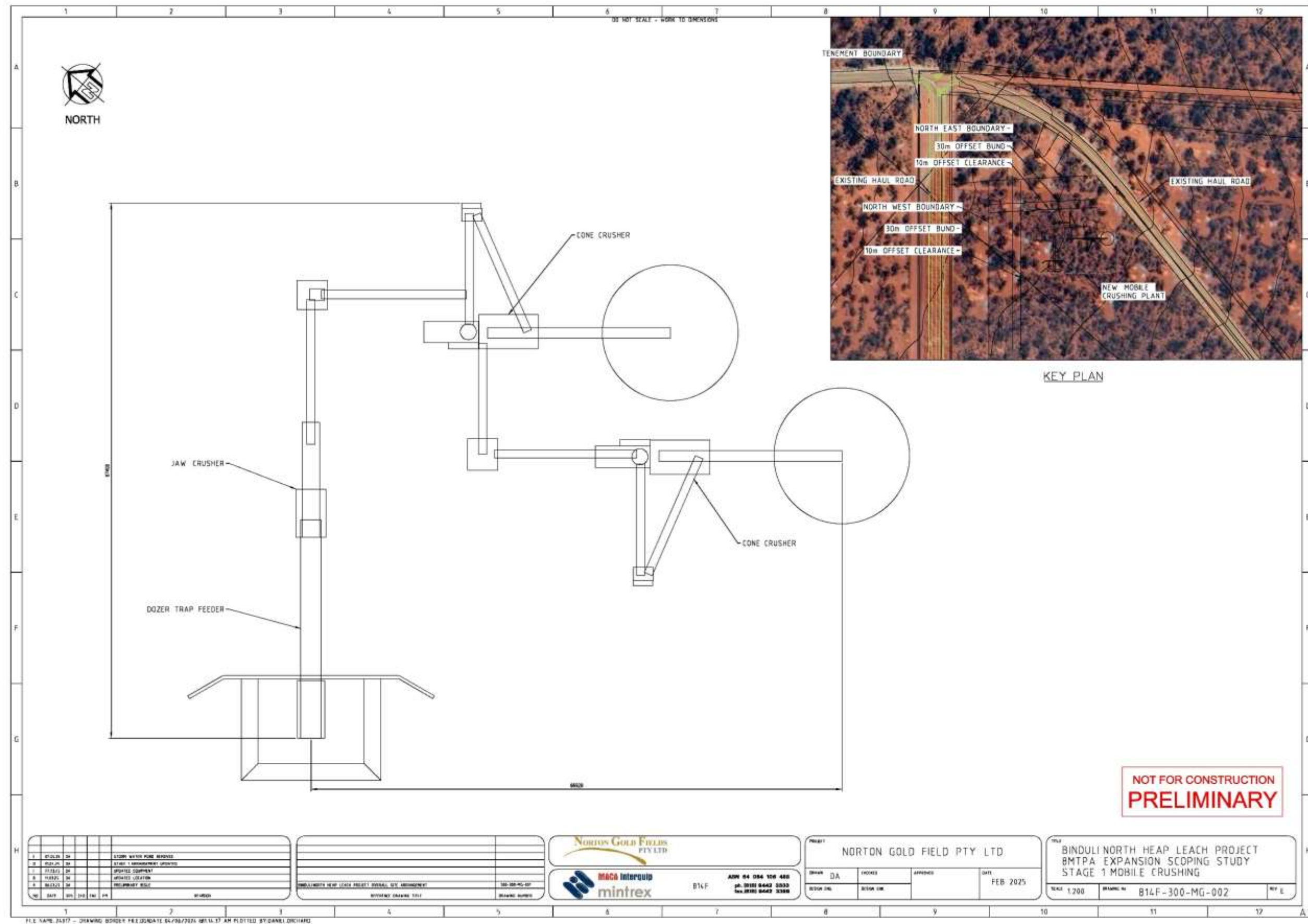


Figure 3: Mobile Crushing plant Stage 1

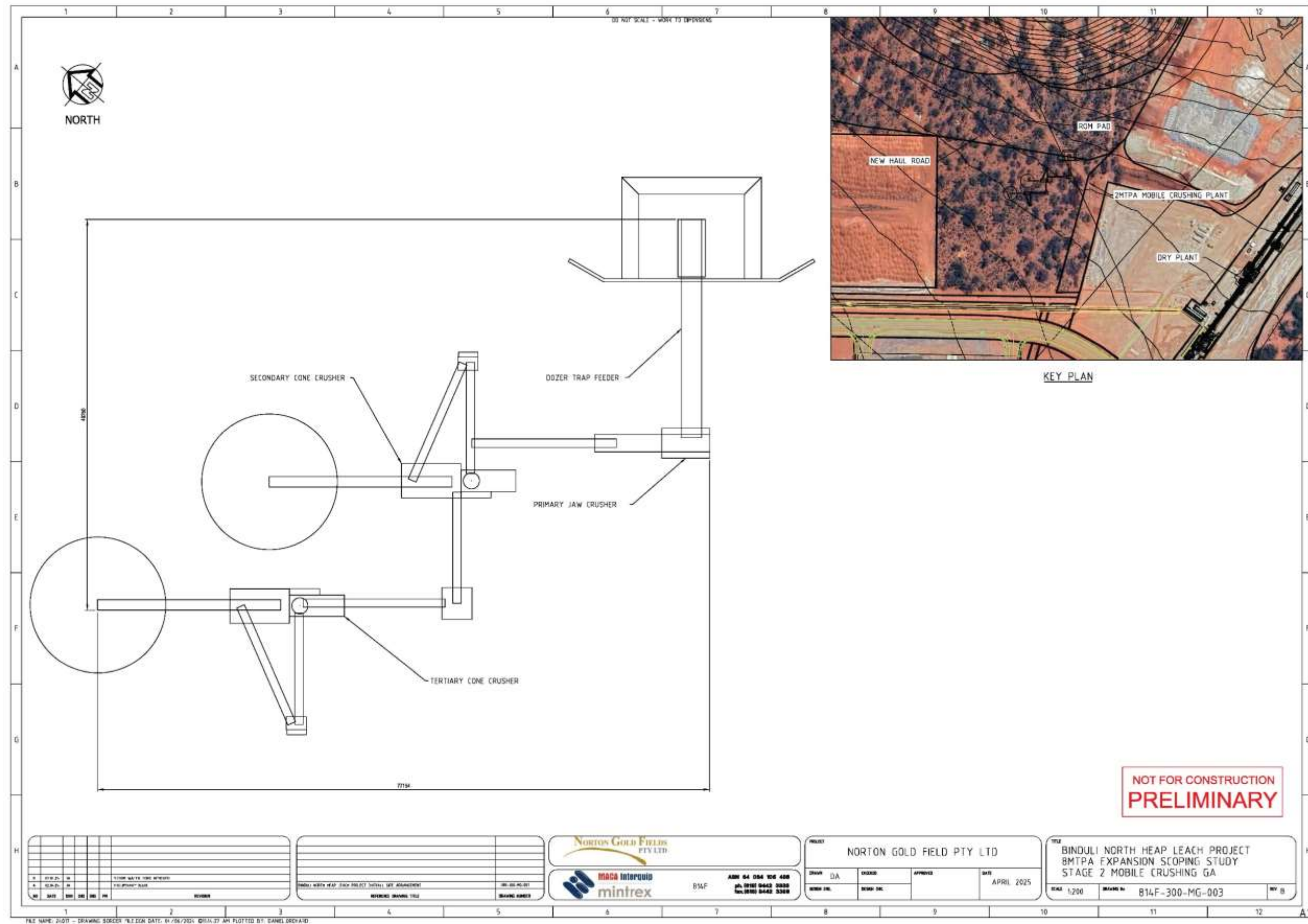


Figure 4: Mobile crushing plant Stage 2

Schedule 2: Premises boundary

The corners of the premises boundary are the coordinates listed in Table 4.

Table 4: Premises boundary coordinates (GDA2020)

	Easting	Northing
1.	343990.111	6593805.921
2.	343890.287	6593717.332
3.	343823.445	6593797.042
4.	343932.316	6593890.009
5.	344164.284	6594083.283
6.	343882.672	6594418.789
7.	343604.072	6594748.92
8.	345105.08	6596051.187
9.	345500.049	6595540.394
10.	344416.384	6594606.466
11.	344365.91	6594570.239
12.	344355.396	6594553.033
13.	344346.618	6594540.461
14.	344326.475	6594513.759
15.	344320.367	6594454.785
16.	344322.564	6594444.965
17.	344315.157	6594413.18
18.	344315.86	6594385.095
19.	344320.926	6594358.718
20.	344323.128	6594349.837
21.	344326.501	6594337.632
22.	344327.624	6594334.38
23.	344332.095	6594321.407

	Easting	Northing
24.	344341.417	6594301.469
25.	344355.88	6594279.63
26.	344374.208	6594260.239
27.	344385.282	6594251.558
28.	344396.032	6594210.029
29.	344418.04	6594176.387
30.	344441.746	6594153.708
31.	344466.004	6594137.873
32.	344501.868	6594123.211
33.	344514.391	6594117.435
34.	344409.049	6594095.284
35.	344352.668	6594076.456
36.	344223.791	6594012.388
37.	344136.979	6593889.46
38.	344145.133	6593805.732
39.	343990.111	6593805.921