



Works Approval

Works approval number	W3050/2025/1
Works approval holder	Golden Spur Resources Pty Ltd
ACN	161 329 933
Registered business address	Ground Floor, 24 Outram Street, West Perth WA 6005
DWER file number	INS-0003050
Duration	22/09/2025 to 21/09/2030
Date of issue	22/09/2025
Premises details	Bellevue Gold Project - Integrated waste landform tailings storage facility (IWLTsf) Stage 4 Mining tenements M36/24, M36/25 and M36/299 as depicted in Figure 1 , Schedule 1

Prescribed premises category description (Schedule 1, <i>Environmental Protection Regulations 1987</i>)	Assessed production / design capacity
Category 5: Processing or beneficiation of metallic or non-metallic ore	1,350,000 tonnes per year

This works approval is granted to the works approval holder, subject to the attached conditions, on 22 September 2025, by:

MANAGER, RESOURCE INDUSTRIES

Officer delegated under section 20 of the Environmental Protection Act 1986

Works approval history

Date	Reference number	Summary of changes
22/09/2025	W3050/2025/1	Works Approval issued.

Interpretation

In this works approval:

- (a) the words ‘including’, ‘includes’ and ‘include’ in conditions mean “including but not limited to”, and similar, as appropriate;
- (b) where any word or phrase is given a defined meaning, any other part of speech or other grammatical form of that word or phrase has a corresponding meaning;
- (c) where tables are used in a condition, each row in a table constitutes a separate condition;
- (d) any reference to an Australian or other standard, guideline, or code of practice in this works approval:
 - (i) if dated, refers to that particular version; and
 - (ii) if not dated, refers to the latest version and therefore may be subject to change over time;
- (e) unless specified otherwise, any reference to a section of an Act refers to that section of the EP Act; and
- (f) unless specified otherwise, all definitions are in accordance with the EP Act.

NOTE: This works approval requires specific conditions to be met but does not provide any implied authorisation for other emissions, discharges, or activities not specified in this works approval.

Works approval conditions

The works approval holder must ensure that the following conditions are complied with:

Construction phase

Infrastructure and equipment

1. The works approval holder must:
 - (a) construct the infrastructure;
 - (b) in accordance with the corresponding design and construction requirements; and
 - (c) at the corresponding infrastructure location, as set out in Table 1.

Table 1: Design and construction requirements

	Infrastructure	Design and construction requirements	Infrastructure location
1.	IWLTSF stage 4 north, including realignment of tailings delivery and return water pipelines for stage 4 north	<p>Embankments:</p> <ol style="list-style-type: none"> a) Existing embankments raised to 489.0m RL in accordance with Figure 3, including HDPE liner and geotextile. b) Embankment extension constructed in accordance with Figure 5 and Figure 2, including: <ol style="list-style-type: none"> a. A cut off trench, HDPE liner and geotextile as per Figure 5; and b. Toe drain and finger drain extensions as shown in Figure 2 c) All vibrating wire piezometer (VWP) cables must be extended to the Stage 4 embankment level, and the logger setup repositioned on new embankment. <p>Pipelines are to be:</p> <ol style="list-style-type: none"> d) situated within secondary containment sufficient to contain any spill for a period equal to the time between routine inspections; or e) buried and equipped with remote monitoring to detect spills; or f) equipped with remote monitoring to detect spills and sufficient secondary containment to contain potential spill volumes. 	<p>Embankments shown as part of 'stage 4' in Figure 1, and 'stage 4 northern embankment RL 489.00' in Figure 2.</p> <p>Pipelines as required within the immediate area of the IWLTSF.</p>
2.	IWLTSF stage 4 south, including realignment of tailings delivery and return water pipelines for stage 4	<p>Embankments:</p> <ol style="list-style-type: none"> a) Existing embankments raised to 489.0m RL in accordance with Figure 4, including HDPE liner and geotextile b) Embankment extension constructed in accordance with Figure 5 and Figure 2, including 	<p>Embankments shown as part of 'stage 4' in Figure 1, and 'stage 4 southern embankment RL 489.0' in Figure 2.</p> <p>Buttress location shown as 'stage 4 buttress</p>

	Infrastructure	Design and construction requirements	Infrastructure location
	south.	<p>a. A cut off trench, HDPE liner and geotextile as per Figure 5; and</p> <p>b. Toe drain extensions as shown in Figure 2</p> <p>c) A buttress as shown in Figure 6 must be constructed to 468.0mRL.</p> <p>d) All vibrating wire piezometer (VWP) cables must be extended to the Stage 4 embankment level, and the logger setup repositioned on new embankment.</p> <p>Pipelines are to be:</p> <p>e) situated within secondary containment sufficient to contain any spill for a period equal to the time between routine inspections; or</p> <p>f) buried and equipped with remote monitoring to detect spills; or</p> <p>g) equipped with remote monitoring to detect spills and sufficient secondary containment to contain potential spill volumes.</p>	<p>(Zone B)' in Figure 6.</p> <p>Pipelines as required within the immediate area of the IWLTsf.</p>
3.	Decant causeway and rock ring	Located to collect decant from the IWLTsf stage 4.	Shown as stage 4 decant causeway RL 489.0' and 'stage 4 rock ring RL 489.0' in Figure 2

Compliance reporting

2. The works approval holder must within 30 calendar days of an item of infrastructure required by condition 1 being constructed:
 - (a) undertake an audit of their compliance with the requirements of condition 1; and
 - (b) prepare and submit to the CEO an Environmental Compliance Report on that compliance.
3. The Environmental Compliance Report required by condition 2, must include as a minimum the following:
 - (a) certification by a suitably qualified geotechnical engineer that the item of infrastructure or component(s) thereof, as specified in condition 1, have been constructed in accordance with the relevant requirements specified in condition 1;
 - (b) as constructed plans and a detailed site plan for each item of infrastructure or component of infrastructure specified in condition 1; and
 - (c) be signed by a person authorised to represent the works approval holder and contains the printed name and position of that person.

Time limited operations phase

Commencement and duration

4. The works approval holder may only commence time limited operations for an item of infrastructure identified in condition 6 where the Environmental Compliance Report as required by condition 2 and 3 has been submitted by the works approval holder for that item of infrastructure.
5. The works approval holder may conduct time limited operations for an item of infrastructure specified in condition 6 (as applicable):
 - (a) for a period not exceeding 180 calendar days from the day the works approval holder meets the requirements of condition 4 for that item of infrastructure; or
 - (b) until such time as a licence for that item of infrastructure is granted in accordance with Part V of the *Environmental Protection Act 1986*, if one is granted before the end of the period specified in condition 5(a).

Time limited operations requirements and emission limits

6. During time limited operations, the works approval holder must ensure that the premises infrastructure and equipment listed in Table 2 and located at the corresponding infrastructure location is maintained and operated in accordance with the corresponding operational requirement set out in Table 2.

Table 2: Infrastructure and equipment requirements during time limited operations

	Site infrastructure and equipment	Operational requirement	Infrastructure location
1.	IWLTSF stage 4 north (including associated tailings and return water pipelines)	a) Must maintain a minimum freeboard of at least 300 mm plus 200mm beach freeboard below the embankment crest. b) Inspections must be carried out twice every 12 hour shift, with no more than 8 hours between inspections.	Within the embankment shown as part of 'stage 4' in Figure 1, and 'stage 4 northern embankment RL 489.00' in Figure 2.
2.	IWLTSF stage 4 south (including associated tailings and return water pipelines)	c) Inspections must include freeboard and visual integrity of the embankment, pipeline and bund integrity and operation of the underdrainage system including sump pump condition and sump capacity. d) Records are to be kept of all inspections. e) Deposition will occur from the perimeter embankments with spigot intervals of between 20 and 50 m. Measures shall be taken to minimise erosion and promote uniform distribution. f) The decant pond must remain at least 100m from the embankment once the beaches have fully developed. g) Tailings must not be left uncovered for	Within the embankment shown of 'stage 4' in Figure 1.

	Site infrastructure and equipment	Operational requirement	Infrastructure location
		more than 18 months. h) A decant return system must be operational at all times.	
3.	Decant causeway and rock ring	A turret pump will be installed if required during time limited operations of IWLTsf stage 4	Shown as stage 4 decant causeway RL 489.0' and 'stage 4 rock ring RL 489.0' in Figure 2

Monitoring during time limited operations

7. The works approval holder must monitor emissions during time limited operations in accordance with Table 3.

Table 3: Discharge monitoring during time limited operations

Discharge point	Monitoring location	Parameter	Frequency	Averaging Period	Unit	Tigger limit
IWLTsf stage 4	Flow meter on discharge pipe	Volume of tailings discharged	Continuous	Monthly	kL	-
	Surface of decant pond ¹	Weak acid dissociable cyanide (WAD CN)	Each monthly period	Spot sample	mg/L	-

Note 1: If safe to do so. If not safe, sample return water at the plant. Sample location must be recorded.

8. The works approval holder must monitor the groundwater during time limited operations for concentrations of the identified parameters in accordance with Table 4.

Table 4: Monitoring of ambient concentrations during time limited operations

Monitoring location	Parameter	Unit	Limit	Frequency	Method
MB02A (S and D), MB03A, MB04, MB06, MB07, MB08, MB09, MB10	Standing water level	mbgl	5 mbgl	Each monthly period	Spot sample, in accordance with AS/NZS 5667.11
	pH ¹	-	-		
	Total dissolved solids	mg/L	-		
	Total cyanide				
	Weak acid dissociable cyanide				
	Arsenic				
	Antimony				
	Bicarbonate				
	Bismuth				
	Calcium				
	Carbonate				
	Cadmium				
	Chloride				
	Chromium				
	Cobalt				
	Copper				
	Iron				
	Lead				
	Magnesium				
	Manganese				
	Mercury				
	Molybdenum				
	Nickel				
	Nitrate				
	Potassium				
	Rhenium				
	Selenium				
	Sodium				
	Sulphate				
	Tellurium				
	Thallium				
	Tungsten				
	Zinc				

Note 1: In-field non-NATA accredited analysis permitted.

9. The works approval holder must ensure that all field monitoring equipment used to comply with condition 8 is operated and calibrated in accordance with the manufacturer's specifications.
10. The works approval holder must record the results of all monitoring activities required by conditions 7 and 8 and record all calibration records required by condition 9.
11. The works approval holder must ensure that the monthly monitoring required by condition 7 and 8 is undertaken in each monthly period such that there are at least 15 days in between the days on which samples are taken in successive months.

Compliance reporting

12. The works approval holder must submit to the CEO a report on the time limited operations within 30 calendar days of the completion date of time limited operations or 60 calendar days before the expiration date of the works approval, whichever is the sooner.
13. The works approval holder must ensure the report required by condition 12 includes the following:
 - (a) a summary of the time limited operations, including timeframes and tonnes of tailings deposited;
 - (b) results of monitoring required by conditions 7 and 8;
 - (c) a summary of the environmental performance of all infrastructure as constructed;
 - (d) a water balance for the IWLTsf;
 - (e) a review of performance and compliance against the conditions of the works approval; and
 - (f) where the conditions of this works approval have not been met, what measures will the works approval holder take to meet them, and what timeframes will be required to implement those measures.

Records and reporting (general)

14. The works approval holder must record the following information in relation to complaints received by the works approval holder (whether received directly from a complainant or forwarded to them by the Department or another party) about any alleged emissions from the premises:
 - (a) the name and contact details of the complainant, (if provided);
 - (b) the time and date of the complaint;
 - (c) the complete details of the complaint and any other concerns or other issues raised; and
 - (d) the complete details and dates of any action taken by the works approval holder to investigate or respond to any complaint.
15. The works approval holder must maintain accurate and auditable books including the following records, information, reports, and data required by this works approval:
 - (a) the works conducted in accordance with condition 1;
 - (b) any maintenance of infrastructure that is performed in the course of complying with condition 6;
 - (c) monitoring programmes undertaken in accordance with condition 7 and 8; and

- (d) complaints received under condition 14.
- 16.** The books specified under condition 15 must:
- (a) be legible;
 - (b) if amended, be amended in such a way that the original version(s) and any subsequent amendments remain legible and are capable of retrieval;
 - (c) be retained by the works approval holder for the duration of the works approval; and
 - (d) be available to be produced to an inspector or the CEO as required.

Definitions

In this works approval, the terms in Table 5 have the meanings defined.

Table 5: Definitions

Term	Definition
books	has the same meaning given to that term under the EP Act.
CEO	means Chief Executive Officer. CEO for the purposes of notification means: Director General Department administering the <i>Environmental Protection Act 1986</i> Locked Bag 10 Joondalup DC WA 6919 info@dwer.wa.gov.au
Condition	a condition to which this works approval is subject under section 62 of the EP Act.
Department	means the department established under section 35 of the <i>Public Sector Management Act 1994</i> and designated as responsible for the administration of Part V Division 3 of the EP Act.
discharge	has the same meaning given to that term under the EP Act.
emission	has the same meaning given to that term under the EP Act.
Environmental Compliance Report	means a report to satisfy the CEO that the conditioned infrastructure has been constructed in accordance with the works approval.
EP Act	<i>Environmental Protection Act 1986</i> (WA).
EP Regulations	<i>Environmental Protection Regulations 1987</i> (WA).
IWTSF	<i>Integrated waste landform tailings storage facility</i>
monthly period	means a one-month period commencing from the first day of a month until the last day of that calendar month.
premises	the premises to which this licence applies, as specified at the front of this licence and as shown on the premises map (Figure 1) in Schedule 1 to this works approval.
prescribed premises	has the same meaning given to that term under the EP Act.
suitably qualified geotechnical engineer	means a person who: (a) holds a Bachelor of Engineering or higher degree recognised by Engineers Australia; and (b) has a minimum of five years of experience working in

Term	Definition
	geotechnical engineering including experience in the design of tailings storage facilities.
time limited operations	refers to the operation of the infrastructure and equipment identified under this works approval that is authorised for that purpose, subject to the relevant conditions.
works approval	refers to this document, which evidences the grant of the works approval by the CEO under section 54 of the EP Act, subject to the conditions.
works approval holder	refers to the occupier of the premises being the person to whom this works approval has been granted, as specified at the front of this works approval.

END OF CONDITIONS

Schedule 1: Maps

Premises map

The boundary of the prescribed premises is shown in the map below (Figure 1).

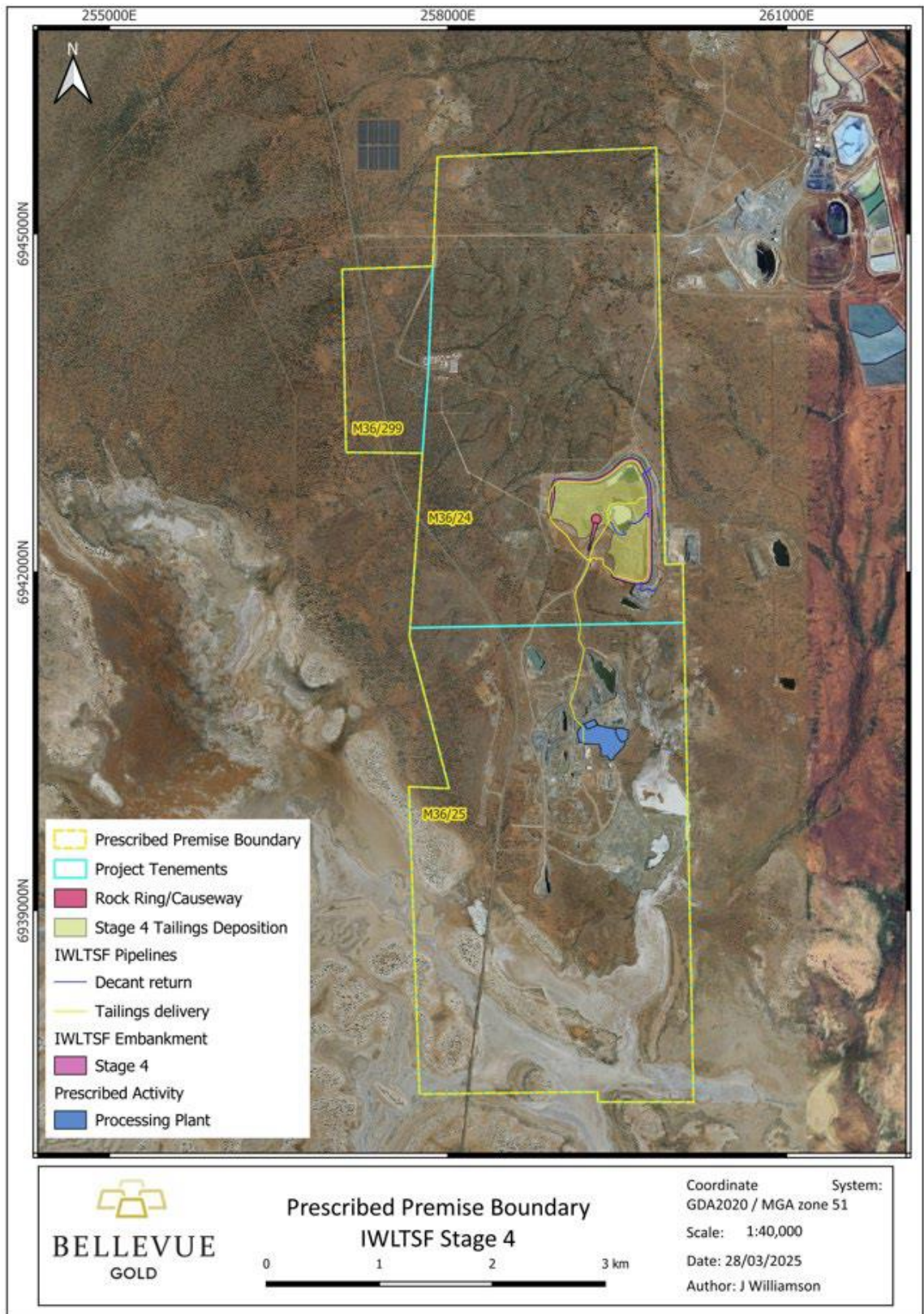


Figure 1: Map of the boundary of the prescribed premises

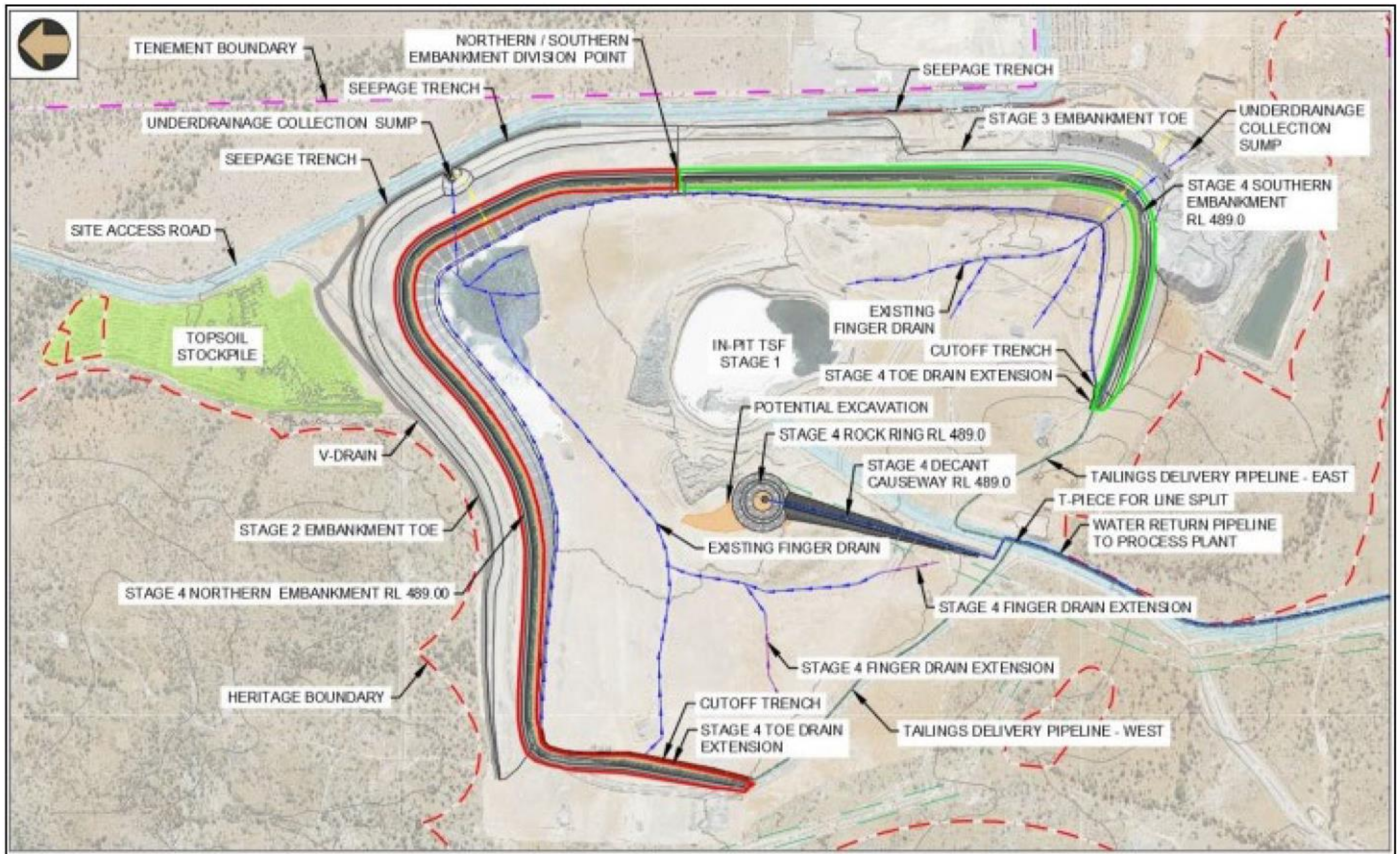


Figure 2: IWLTSF Stage 4 North (red) and Stage 4 South (green) general arrangement

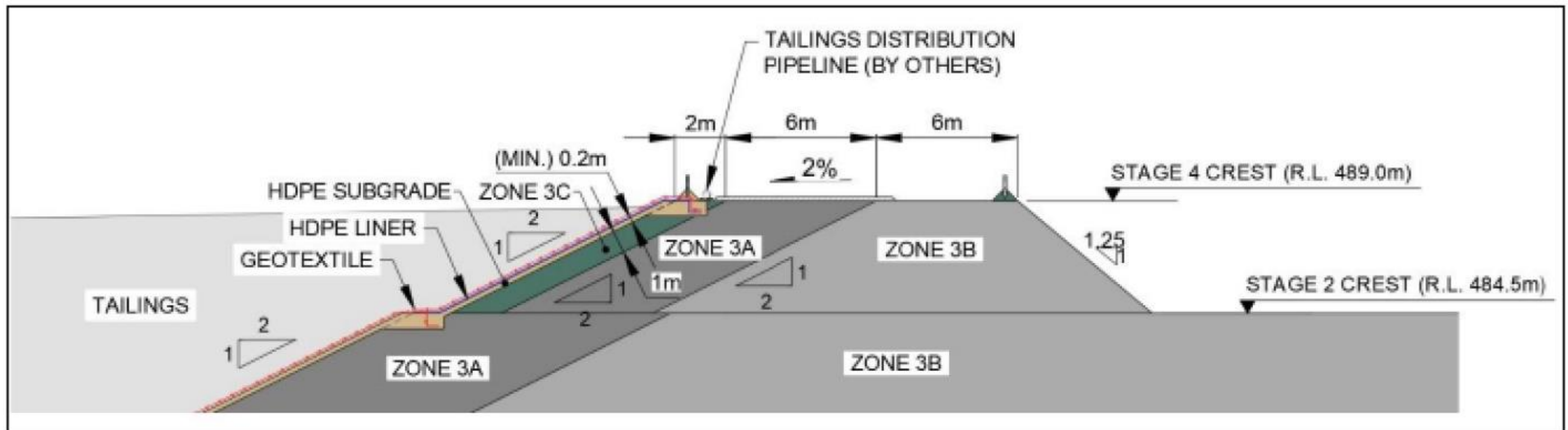


Figure 3: Typical section IWLTSF Stage 4 north embankment

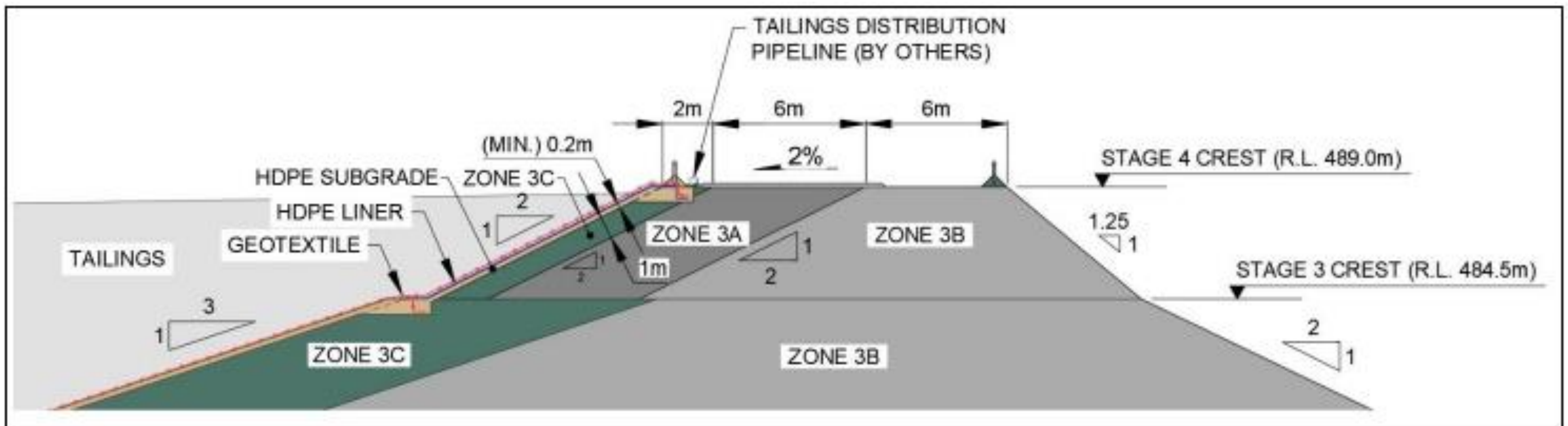


Figure 4: Typical section IWLTSF Stage 4 south embankment

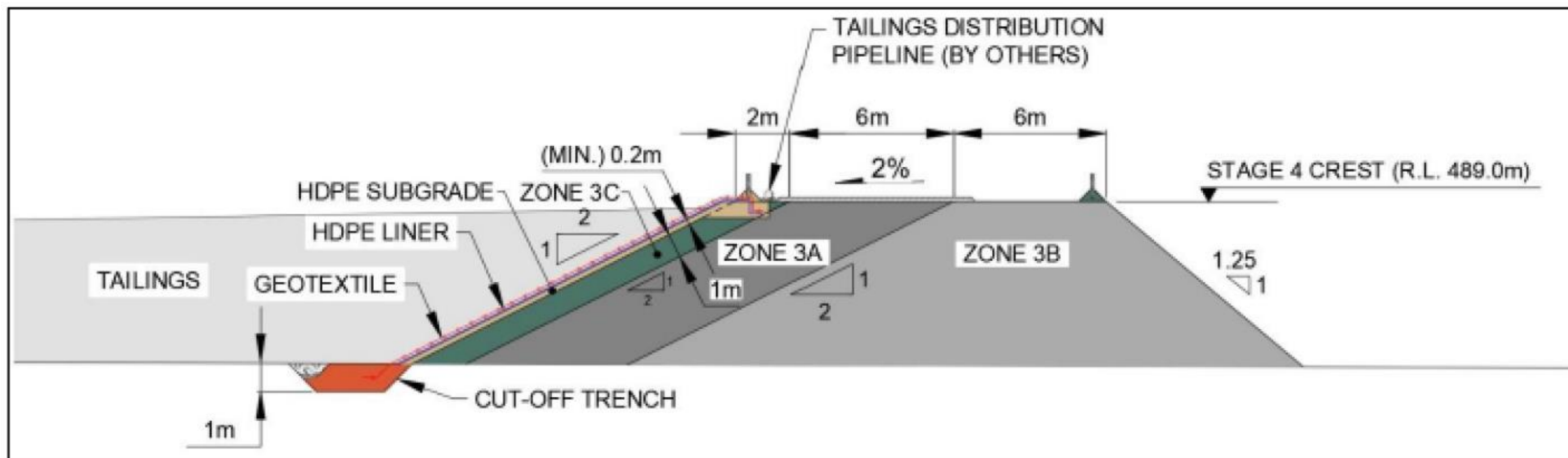


Figure 5: Typical section IWLTSF Stage 4 embankment extension, including cut-off trench configuration

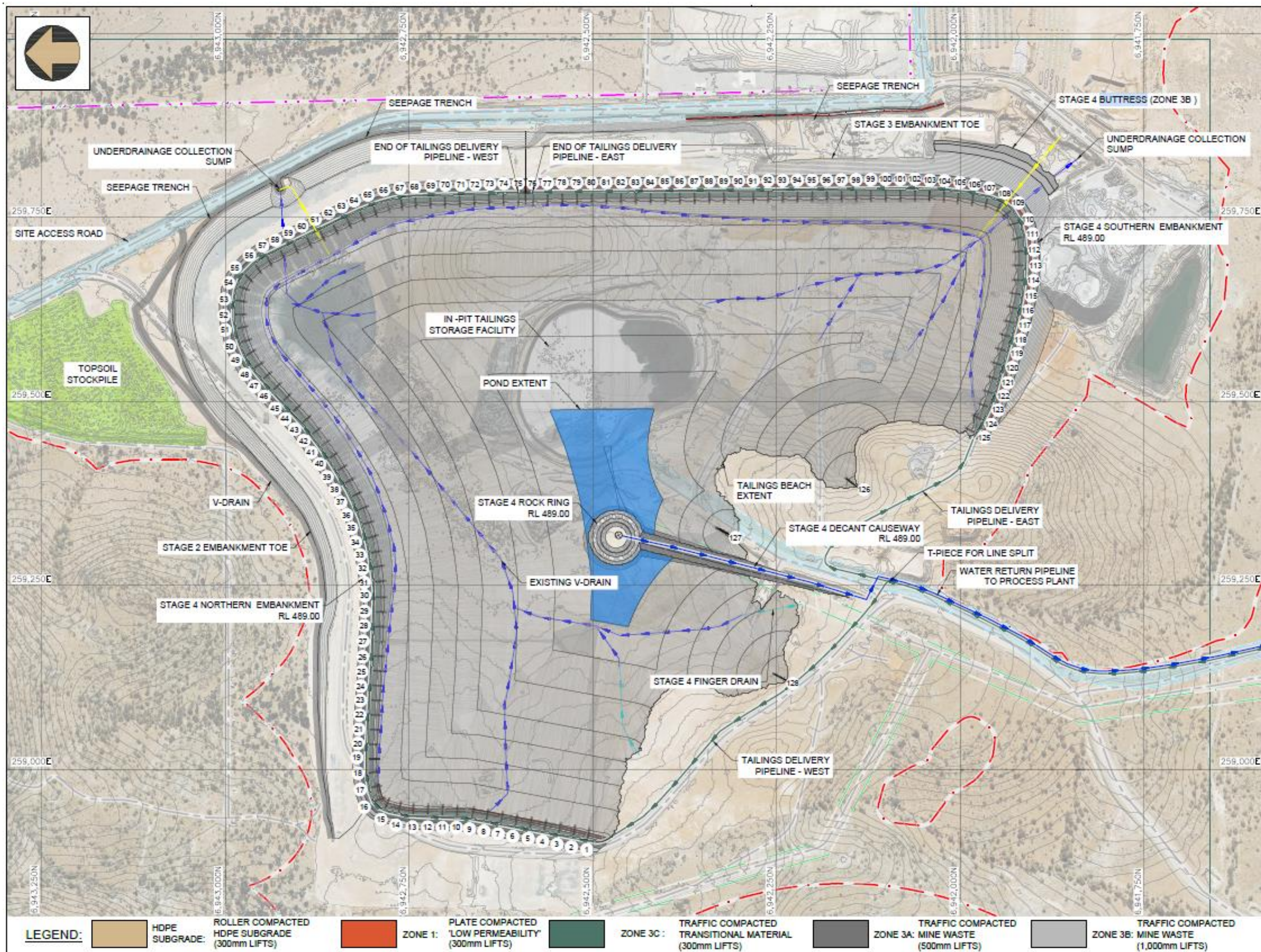


Figure 6: IWLTSF Stage 4 general arrangement, including buttress location