



# Works Approval

<b>Works approval number</b>	W6803/2023/1
<b>Works approval holder</b>	Evolution Mining (Mungari) Pty Ltd
<b>ACN</b>	002 124 745
<b>Registered business address</b>	Level 30 175 Liverpool Street SYDNEY NSW 2000
<b>DWER file number</b>	DER2023/000228 INS-0002660
<b>Duration</b>	18/08/2023 to 17/08/2026
<b>Date of issue</b>	18/08/2023
<b>Date of amendment</b>	24/09/2023
<b>Premises details</b>	Mungari Gold Project COOLGARDIE WA 6429 Legal description - Mining tenements L15/228, L15/246, M15/688, M15/829, M15/830, M15/1287, M15/1407 and M15/1741 As defined by the coordinates in Schedule 2

<b>Prescribed premises category description</b> (Schedule 1, <i>Environmental Protection Regulations 1987</i> )	<b>Assessed production / design capacity</b>
Category 5: Processing or beneficiation of metallic or non metallic ore	5,000,000 tonnes per annual period

This works approval is granted to the works approval holder, subject to the attached conditions, on 24 September 2025, by:

**MANAGER, RESOURCE INDUSTRIES**

**STATE-WIDE DELIVERY (ENVIRONMENTAL REGULATION)**

an officer delegated under section 20 of the *Environmental Protection Act 1986* (WA)

## Works approval history

Date	Reference number	Summary of changes
18/08/2023	W6803/2023/1	Works approval granted.
24/09/2025	W6803/2023/1	Works approval amended to extend Time Limited Operations Duration by 180 days.

## Interpretation

In this works approval:

- (a) the words ‘including’, ‘includes’ and ‘include’ in conditions mean “including but not limited to”, and similar, as appropriate;
- (b) where any word or phrase is given a defined meaning, any other part of speech or other grammatical form of that word or phrase has a corresponding meaning;
- (c) where tables are used in a condition, each row in a table constitutes a separate condition;
- (d) any reference to an Australian or other standard, guideline, or code of practice in this works approval:
  - (i) if dated, refers to that particular version; and
  - (ii) if not dated, refers to the latest version and therefore may be subject to change over time;
- (e) unless specified otherwise, any reference to a section of an Act refers to that section of the EP Act; and
- (f) unless specified otherwise, all definitions are in accordance with the EP Act.

**NOTE:** This works approval requires specific conditions to be met but does not provide any implied authorisation for other emissions, discharges, or activities not specified in this works approval.

## Works approval conditions

The works approval holder must ensure that the following conditions are complied with:

### Construction phase

#### Infrastructure and equipment

1. The works approval holder must:
  - (a) construct and/or install the infrastructure and/or equipment;
  - (b) in accordance with the corresponding design and construction / installation requirements; and
  - (c) at the corresponding infrastructure location; and
  - (d) within the corresponding timeframe,
 as set out in Table 1.

**Table 1: Design and construction / installation requirements**

	Infrastructure	Design and construction / installation requirements	Infrastructure location
1.	Mungari Mill Upgrade:	(a) Mungari Mill Plant layout to be in accordance with Figure 2, Schedule 1. (b) The Mungari Mill upgrade with a design capacity of 4.2 Mtpa to include: <ol style="list-style-type: none"> <li>i. Crushing: new primary crusher and new coarse ore stockpile;</li> <li>ii. Grinding: new SAG mill, hydro cyclones and horizontal screen.</li> <li>iii. Gravity concentration: concentrators, leach reactor, vibrating screens.</li> <li>iv. Leach and adsorption: new leach and adsorption tanks (A1 &amp; A2), screens and new pre-leach thickener.</li> <li>v. Elution circuit: acid wash and elution column, LPG fired solution heater (LP gas fuel source).</li> <li>vi. Electrowinning and smelting: 2 cell electrowinning circuit (Cells 3 &amp; 4) and return tank (Return tank 2) and LPG fire tilting furnace.</li> <li>vii. Carbon regeneration: carbon regeneration kiln and screen.</li> <li>viii. Services: associated pumps and tanks to increase water to the flow process.</li> <li>ix. Tailings surge tank and pipeline: post-process output and pre-tailings pipeline input surge tank for tailings.</li> </ol>	As depicted in Figure 2 of Schedule 1.
2.	Dust controls	(a) Installation of new fogging systems for the new crusher.	As depicted in Figure 2, Schedule 1

	Infrastructure	Design and construction / installation requirements	Infrastructure location
		(b) Installation of new water sprays; and (c) Skirting on new conveyor systems.	
3.	Stormwater management	Stormwater diversion trench to be maintained in the location shown in Figure 3, Schedule 1.	As depicted in Figure 3, Schedule 1
4.	Tailings: final tailings hopper tank and associated pipelines.	(a) Tailings tank to be bunded with a containment capacity to 110% capacity of any tank or 25% of the total capacity of an interlinked system.  (b) All pipelines containing tailings are either: i. Constructed according to Australian Standards AS/NZS 2033, 4129, 4130 and 4131 for polyethylene pipes; and ii. Equipped with telemetry with leak detect alarms; and / or iii. Equipped with automatic cut outs in the event of a pipe failure; and / or iv. Provided with secondary containment sufficient to contain any spill for a period equal to the time between routine inspections.	As depicted in Figure 2, Schedule 1
5.	Chemical storage area	(a) Chemical storage area to comprise of: i. New cyanide storage tank. ii. New Caustic dosing pump. iii. A second pump for hydrochloric acid. iv. Oxygen distribution (45kl vessel). v. New flocculant storage and delivery system.  (b) Chemical storage areas to be bunded with a containment capacity to 110% capacity of any tank or 25% of the total capacity of an interlinked system.	As depicted in Figure 2, Schedule 1.

### Compliance reporting

2. The works approval holder must within 30 calendar days of an item of infrastructure or equipment required by condition 1 being constructed and/or installed:
  - (a) undertake an audit of their compliance with the requirements of condition 1; and
  - (b) prepare and submit to the CEO an Environmental Compliance Report on that compliance.
3. The Environmental Compliance Report required by condition 2, must include as a minimum the following:

- (a) certification by a suitably qualified engineer that the items of infrastructure or component(s) thereof, as specified in condition 1, have been constructed in accordance with the relevant requirements specified in condition 1;
- (b) as constructed plans and a detailed site plan for each item of infrastructure or component of infrastructure specified in condition 1; and
- (c) be signed by a person authorised to represent the works approval holder and contains the printed name and position of that person.

## Environmental commissioning phase

### Environmental commissioning requirements and emission limits

4. The works approval holder may only commence environmental commissioning of an item of infrastructure listed in condition 5 once the Environmental Compliance Report has been submitted for that item of infrastructure in accordance with condition 2 of this works approval.
5. Any environmental commissioning activities undertaken for an item of infrastructure specified in Table 2 may only be carried out:
  - (a) in accordance with the corresponding commissioning requirements; and
  - (b) for the corresponding authorised commissioning duration.

**Table 2: Environmental commissioning requirements**

	Infrastructure	Commissioning requirements	Authorised commissioning duration
1	Crusher: Fogging systems for the new crusher. Water sprays and skirting on new conveyor systems.	(a) Infrastructure to be tested to ensure all components are working in accordance with manufacture specifications.	For a period not exceeding 28 calendar days.
2	Reagents – cyanide solution tank and pipelines.	(b) Dust suppression sprays to be tested to ensure functionality.	
3	Tailings – Final tailings hopper tank.	(c) Stormwater to be managed so contaminated or potentially contaminated stormwater is captured to prevent release into the environment.  (d) Visual monitoring of airborne dust levels and efficacy of dust suppression measures to occur on a daily basis.	

### Environmental Commissioning Report

6. The works approval holder must submit to the CEO an Environmental Commissioning Report within 30 calendar days of the completion rate of environmental commissioning for each item of infrastructure specified in Table 2.
7. The works approval must ensure the Environmental Commissioning Report required by condition 6 of this works approval includes the following:

- (a) a summary of the environmental performance of each item of infrastructure or equipment as constructed or installed, which at a minimum includes records detailing the:
  - (i) environmental commissioning of the water sprays and fogging systems for the new crusher;
  - (ii) cyanide solution tank and pipelines; and
  - (iii) final tailings topper tank.
- (b) a review of the works approval holder's performance and compliance against the conditions of this works approval; and
- (c) where they have not been met, measures proposed to meet the manufacture's design specifications and the conditions of this works approval, together with timeframes for implementing the proposed measures.

## Time limited operations phase

### Commencement and duration

8. The works approval holder may only commence time limited operations for an item of infrastructure identified in condition 10:
  - (a) where the item of infrastructure is not authorised to undertake environmental commissioning, the Environmental Compliance Report as required by condition 2 has been submitted by the works approval holder for that item of infrastructure; and
  - (b) where the item of infrastructure is authorised to undertake environmental commissioning under condition 4, the Environmental Commissioning Report for that item of infrastructure as required by condition 6 has been submitted by the works approval holder.
9. The works approval holder may conduct time limited operations for an item of infrastructure specified in condition 10 (as applicable):
  - (a) for a period not exceeding 360 calendar days from the day the works approval holder meets the requirements of condition 8 for that item of infrastructure; or
  - (b) until such time as a licence for that item of infrastructure is granted in accordance with Part V of the *Environmental Protection Act 1986*, whichever is sooner.

### Time limited operations requirements and emission limits

10. During time limited operations, the works approval holder must ensure that the premises infrastructure and equipment listed in Table 3 and located at the corresponding infrastructure location is maintained and operated in accordance with the corresponding operational requirement set out in Table 3.

**Table 3: Infrastructure and equipment requirements during time limited operations**

	Site infrastructure and equipment	Operational requirement	Infrastructure location
1.	Mungari Mill	(a) Dust suppression sprays must be operated at the ROM feed hopper, transfer points and on the product stockpiles to minimise dust generation.	As depicted in Figure 2, Schedule 1.

	Site infrastructure and equipment	Operational requirement	Infrastructure location
		<ul style="list-style-type: none"> <li>(b) Ore is to be wetted down prior to crushing to minimise dust.</li> <li>(c) Visual monitoring of airborne dust levels and efficacy of dust suppression measures to occur on a daily basis.</li> <li>(d) Volumes of ore processed through the crushing and screening plant to be recorded.</li> <li>(e) Water cart to be available at all times to manage dust emissions.</li> <li>(f) Bunds, sumps and hardstands are to be maintained.</li> <li>(g) Potentially contaminated stormwater to be captured and prevent from being released into the environment.</li> <li>(h) Stormwater diversion trench to be inspected on a weekly basis and following significant rainfall events and pumped out to remove excess sediment to prevent overflowing of contaminated stormwater.</li> </ul>	
2.	Chemical storage	Ensure banded hydrocarbon and chemical storage areas are maintained through regular inspections.	As depicted in Figure 2, Schedule 1.

## General

11. Where the works approval holder uses hypersaline mine dewater for dust suppression during both construction and time limited operation activities, the water must be:
- (a) stored in pits ensuring all visible particulates have settled prior to being used for dust suppression; and
  - (b) applied to avoid damage to native vegetation (such as from over spraying or runoff).

## Compliance reporting

12. The works approval holder must submit to the CEO a report on the time limited operations within 30 calendar days of the completion date of time limited operations or 90 calendar days before the expiration date of the works approval, whichever is the sooner.
13. The works approval holder must ensure the report required by condition 12 includes the following:
- (a) a summary of the time limited operations, including timeframes and amount of ore processed;
  - (b) a summary of the environmental performance of all infrastructure as constructed or installed (as applicable).

- (c) a review of performance and compliance against the conditions of the works approval and the Environmental Commissioning Report; and
- (d) where the manufacturer's design specifications and the conditions of this works approval have not been met, what measures will the works approval holder take to meet them, and what timeframes will be required to implement those measures.

## Records and reporting (general)

- 14.** The works approval holder must record the following information in relation to complaints received by the works approval holder (whether received directly from a complainant or forwarded to them by the Department or another party) about any alleged emissions from the premises:
  - (a) the name and contact details of the complainant, (if provided);
  - (b) the time and date of the complaint;
  - (c) the complete details of the complaint and any other concerns or other issues raised; and
  - (d) the complete details and dates of any action taken by the works approval holder to investigate or respond to any complaint.
- 15.** The works approval holder must maintain accurate and auditable books including the following records, information, reports, and data required by this works approval:
  - (a) the works conducted in accordance with condition 1;
  - (b) any maintenance of infrastructure that is performed in the course of complying with condition 1; and
  - (c) complaints received under condition 14.
- 16.** The books specified under condition 15 must:
  - (a) be legible;
  - (b) if amended, be amended in such a way that the original version(s) and any subsequent amendments remain legible and are capable of retrieval;
  - (c) be retained by the works approval holder for the duration of the works approval; and
  - (d) be available to be produced to an inspector or the CEO as required.



## Definitions

In this works approval, the terms in Table 4 have the meanings defined.

**Table 4: Definitions**

Term	Definition
annual period	a 12 month period commencing from 1 January until 31 December of the same year.
books	has the same meaning given to that term under the EP Act.
CEO	means Chief Executive Officer. CEO for the purposes of notification means:  Director General Department administering the <i>Environmental Protection Act 1986</i> Locked Bag 10 Joondalup DC WA 6919 <a href="mailto:info@dwer.wa.gov.au">info@dwer.wa.gov.au</a>
Department	means the department established under section 35 of the <i>Public Sector Management Act 1994</i> and designated as responsible for the administration of Part V Division 3 of the EP Act.
discharge	has the same meaning given to that term under the EP Act.
emission	has the same meaning given to that term under the EP Act.
environmental commissioning	means the sequence of activities to be undertaken to test equipment integrity and operation, or to determine the environmental performance, of equipment and infrastructure to establish or test a steady state operation and confirm design specifications.
Environmental Commissioning Report	means a report on any commissioning activities that have taken place and a demonstration that they have concluded, with focus on emissions and discharges, waste containment, and other environmental factors.
Environmental Compliance Report	means a report to satisfy the CEO that the conditioned infrastructure and/or equipment has been constructed and/or installed in accordance with the works approval.
EP Act	<i>Environmental Protection Act 1986</i> (WA).
EP Regulations	<i>Environmental Protection Regulations 1987</i> (WA).
premises	the premises to which this licence applies, as specified at the front of this licence and as shown on the premises map (Figure 1) in Schedule 1 to this works approval.

Term	Definition
prescribed premises	has the same meaning given to that term under the EP Act.
suitably qualified engineer	means a competent professional who: (a) holds a qualification in engineering or equivalent; and (b) has a minimum of at least three years' experience working as an engineer.
time limited operations	refers to the operation of the infrastructure and equipment identified under this works approval that is authorised for that purpose, subject to the relevant conditions.
works approval	refers to this document, which evidences the grant of the works approval by the CEO under section 54 of the EP Act, subject to the conditions.
works approval holder	refers to the occupier of the premises being the person to whom this works approval has been granted, as specified at the front of this works approval.

---

**END OF CONDITIONS**

## Schedule 1: Maps

### Premises map

The boundary of the prescribed premises is shown in the map below (Figure 1).

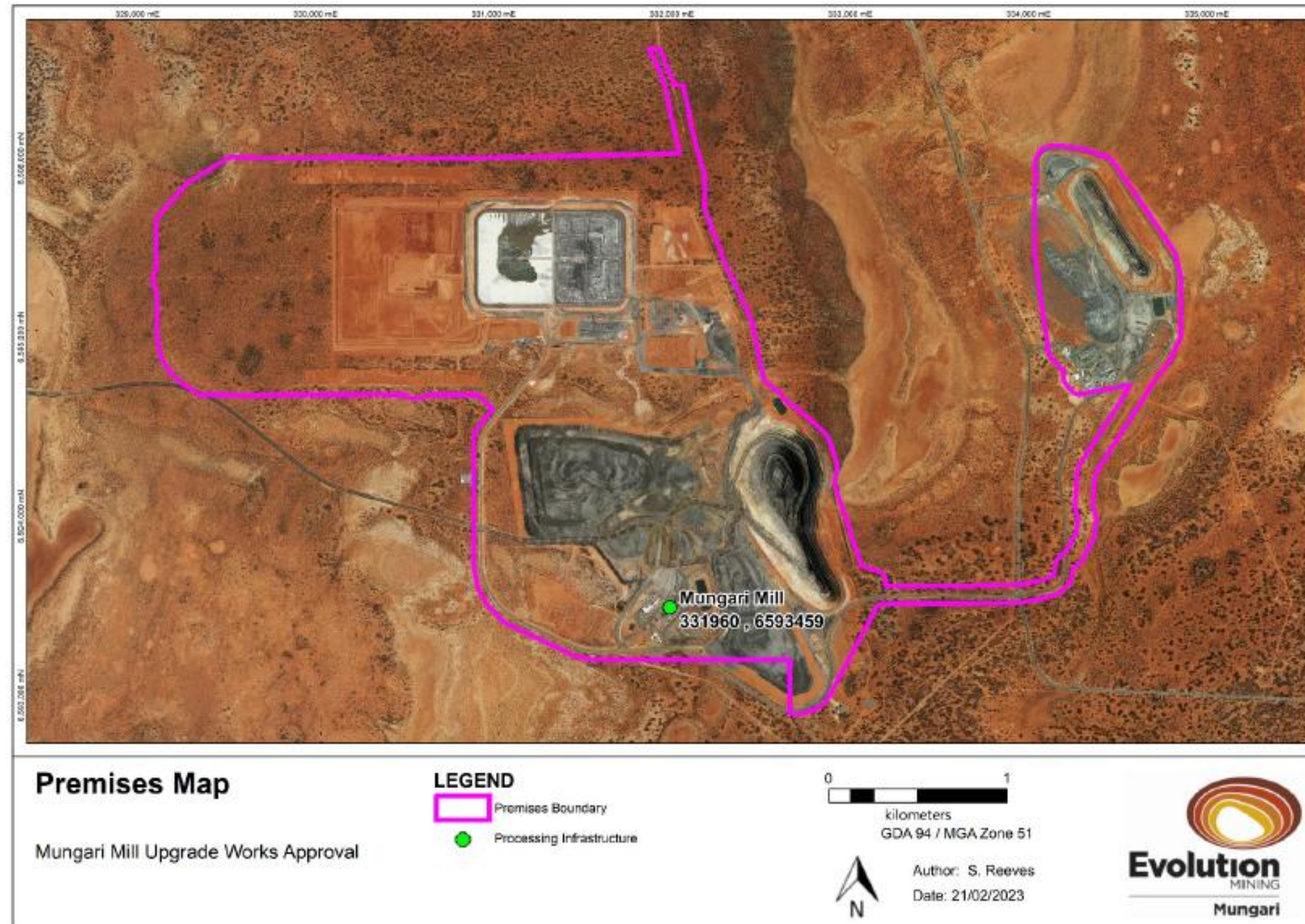
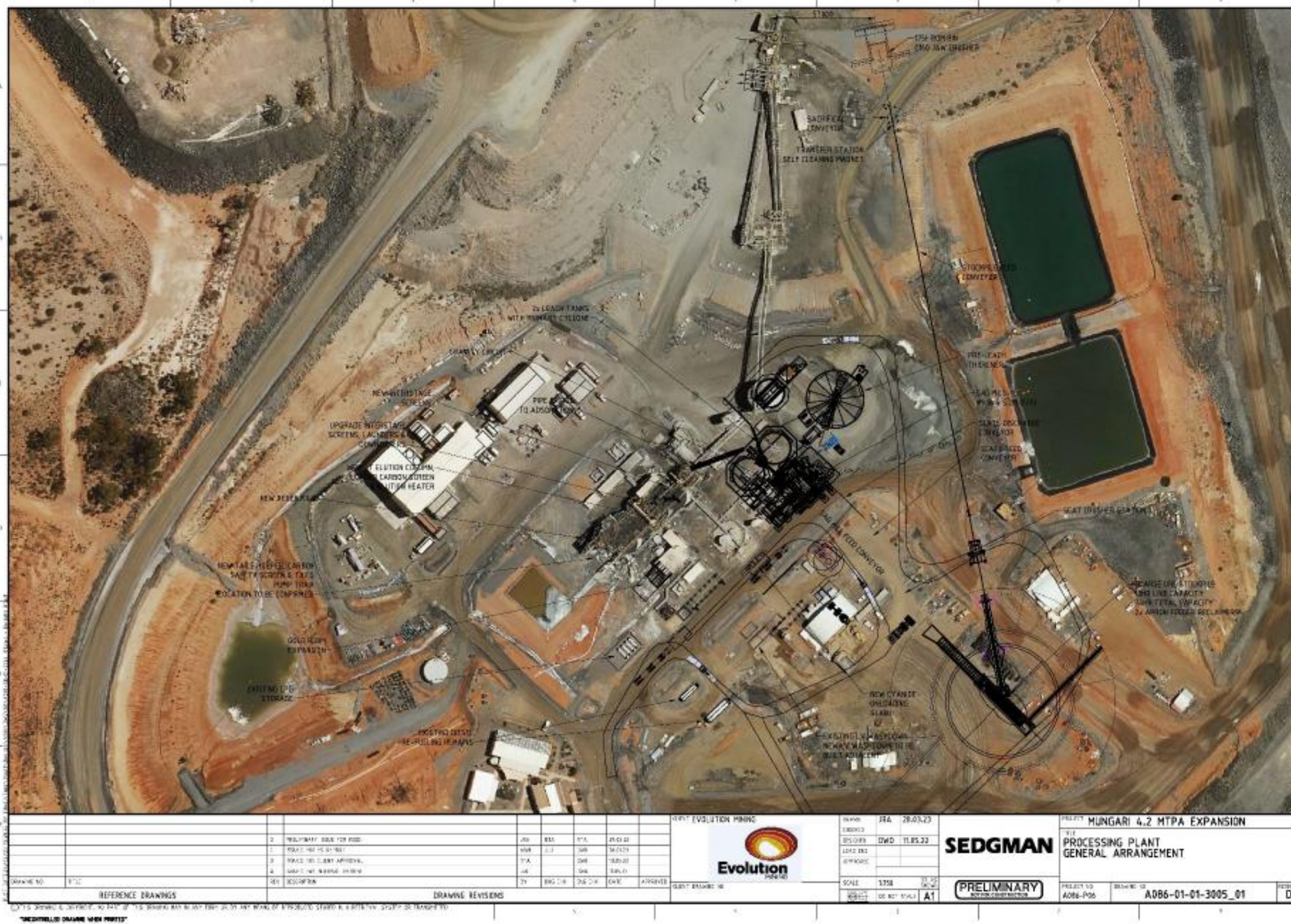


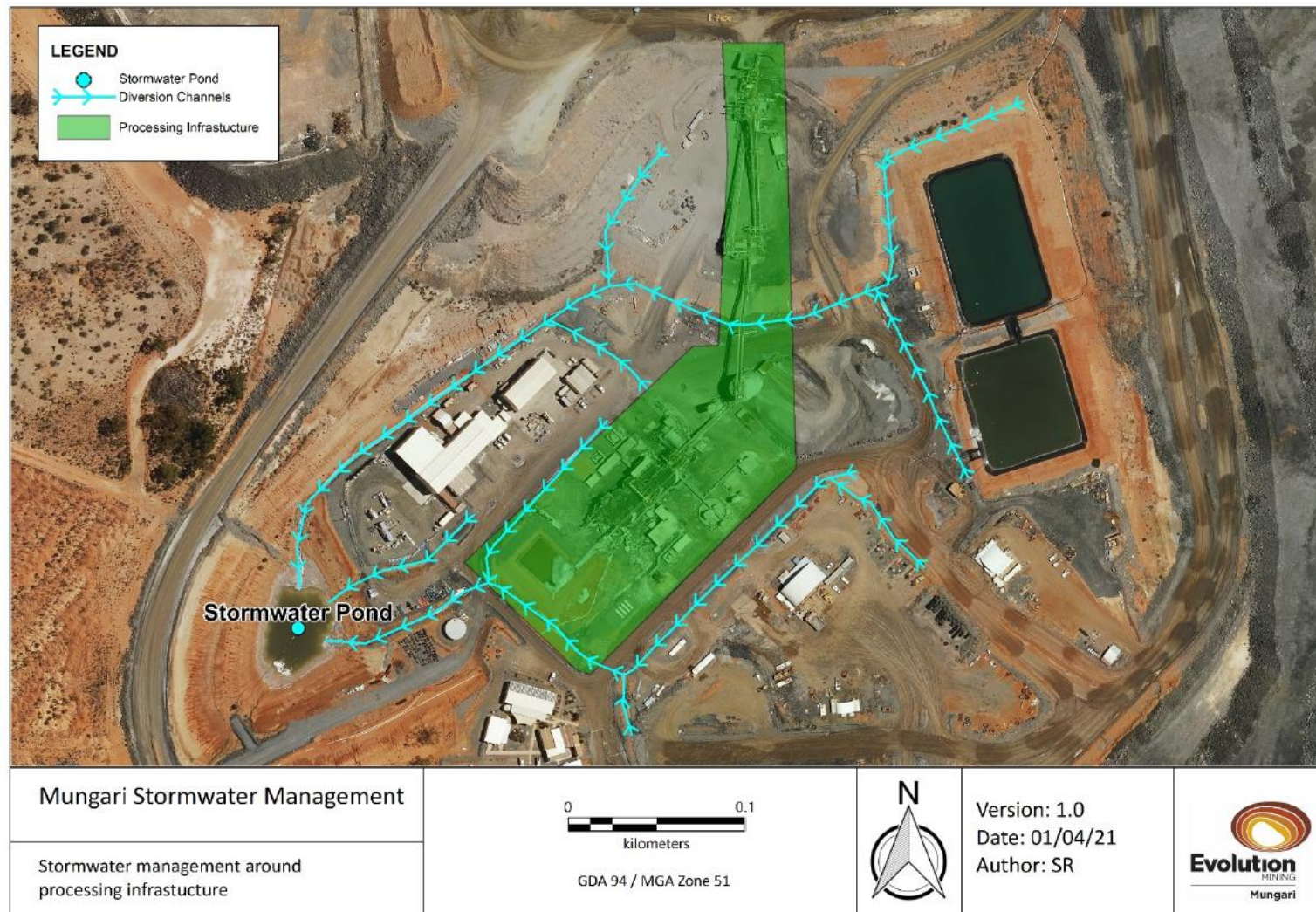
Figure 1: Map of the boundary of the prescribed premises





**Figure 2: Processing plant general arrangement**





**Figure 3: Mungari Stormwater Management**

## Schedule 2: Premises boundary

The corners of the premises boundary are the coordinates listed in Table 5.

**Table 5: Premises boundary coordinates (GDA2020 Zone 51)**

Easting	Northing
331845	6596581
332034	6596376
332157	6595677
332494	6594717
332897	6594242
333035	6593694
334129	6593724
334544	6594696
334092	6594851
334006	6595933
334440	6595958
334800	6595423
334825	6594971
334345	6594199
334103	6593523
333129	6593477
332634	6592864
332631	6593166
331532	6593166
330882	6593572
330966	6594563
329315	6594646
329097	6594886
329082	6595628
329495	6595972
332014	6595993