



**Works approval number** W2964/2025/1

**Works approval holder** Iluka Resources Limited

**ACN** 008 675 018

**Registered business address** Level 17, 240 St Georges Terrace  
PERTH WA 6000

**DWER file number** APP-0028564

**Duration** 21/07/2025 to 20/07/2030

**Date of amendment** 30/03/2026

**Premises details**

North Capel Operations  
Yearly Road  
CAPEL WA 6271

Legal description -  
Being all of mining tenements M70/257, M70/651, M70/959, M70/962, M70/970, M70/978, M70/990, M70/1083 and M 70/1128, and part of mining tenements M70/279, M70/386 & M70/1082  
As defined by the coordinates in Schedule 1

<b>Prescribed premises category description (Schedule 1, <i>Environmental Protection Regulations 1987</i>)</b>	<b>Assessed production / design capacity</b>
Category 8 - Mineral sands mining or processing: premises on which mineral sands ore is mined, screened, separated or otherwise processed.	730,000 tonnes per annual period
Category 31 - Chemical manufacturing: premises (other than premises within category 32) on which chemical products are manufactured by a chemical process.	380,000 tonnes per annual period
Category 37 - Char manufacturing: premises on which wood, carbon material or coal is charred to produce a fuel or material of a carbonaceous nature or of enriched carbon content	30,000 tonnes per annual period

This works approval is granted to the works approval holder, subject to the attached conditions, on 30 March 2026 by:

**MANAGER, PROCESS INDUSTRIES**

an officer delegated under section 20 of the *Environmental Protection Act 1986* (WA)

## Works approval history

Date	Reference number	Summary of changes
21 July 2025	W2964/2025/1	Works approval granted.
30 March 2026	W2964/2025/1	CEO initiated amendment to extend time limited operations from 180 day to 12 months.

## Interpretation

In this works approval:

- (a) the words ‘including’, ‘includes’ and ‘include’ in conditions mean “including but not limited to”, and similar, as appropriate;
- (b) where any word or phrase is given a defined meaning, any other part of speech or other grammatical form of that word or phrase has a corresponding meaning;
- (c) where tables are used in a condition, each row in a table constitutes a separate condition;
- (d) any reference to an Australian or other standard, guideline, or code of practice in this works approval:
  - (i) if dated, refers to that particular version; and
  - (ii) if not dated, refers to the latest version and therefore may be subject to change over time;
- (e) unless specified otherwise, any reference to a section of an Act refers to that section of the EP Act; and
- (f) unless specified otherwise, all definitions are in accordance with the EP Act.

**NOTE:** This works approval requires specific conditions to be met but does not provide any implied authorisation for other emissions, discharges, or activities not specified in this works approval.

## Works approval conditions

The works approval holder must ensure that the following conditions are complied with:

### Construction phase

#### Infrastructure and equipment

1. The works approval holder must:
  - (a) construct the infrastructure;
  - (b) in accordance with the corresponding design and construction requirements; and
  - (c) at the corresponding infrastructure location; as set out in Table 1.

**Table 1: Design and construction requirements**

	Infrastructure	Design and construction requirements	Infrastructure location
1.	Stockpile Storage Area (SSA)	(a) All infrastructure must be constructed: <ol style="list-style-type: none"> <li>i. At least 1 m above the highest recorded annual groundwater level.</li> <li>ii. With grading that prevents the pooling of runoff and ensures adequate fall towards drainage infrastructure and the settling pond.</li> <li>iii. With sufficient capacity to contain run-off that would result from a one in 20 (5 per cent) AEP, 24-hour rainfall event.</li> </ol> (b) Perimeter bunds must be constructed to a height of 26 m AHD, excluding the north-west drainage point. (c) The hardstand must consist of a 200 mm thick limestone pad compacted to a minimum of 95% MDD. (d) Drainage swales must be constructed using low permeability material, such as compacted limestone. (e) Rock pitching must be installed to convey runoff from drainage swales to the settling pond. (f) The settling pond must: <ol style="list-style-type: none"> <li>i. be constructed using low permeability material (such as compacted limestone) that minimises infiltration of leachate</li> </ol>	As shown in Figure 2 as ' <i>SSA Disturbance Envelope</i> ' and in Figure 3 as ' <i>Stockpile Storage Area</i> ', ' <i>Drainage swale</i> ' and ' <i>rock pitching</i> '

	Infrastructure	Design and construction requirements	Infrastructure location
		<p>to soil and groundwater.</p> <p>ii. Be fitted with a pump and piping to transfer water to the Co-Product Disposal (CPD) Dams</p>	
2.	SSA Overburden Storage Area	<p>(a) Must be constructed with a total disturbance envelope of 1.310 ha or less.</p> <p>(b) Deposited material must be flat-topped with a height at least 0.7 m below the existing landform.</p>	As shown in Figure 2 as 'SSA Disturbance Envelope' and in Figure 3 as 'Overburden'

### Compliance reporting

2. The works approval holder must within 30 calendar days of an item of infrastructure required by condition 1 being constructed:
  - (a) undertake an audit of their compliance with the requirements of condition 1; and
  - (b) prepare and submit to the CEO an Environmental Compliance Report on that compliance.
3. The Environmental Compliance Report required by condition 2, must include as a minimum the following:
  - (a) Certification by an engineer that the items of infrastructure or component(s) thereof, as specified in condition 1, have been constructed in accordance with the relevant requirements specified in condition 1;
  - (b) as constructed plans and a detailed site plan for each item of infrastructure or component of infrastructure specified in condition 1; and
  - (c) be signed by a person authorised to represent the works approval holder and contains the printed name and position of that person.

### Time limited operations phase

#### Commencement and duration

4. The works approval holder may only commence time limited operations for an item of infrastructure identified in condition 1 where the Environmental Compliance Report as required by condition 2 has been submitted by the works approval holder for that item of infrastructure.
5. The works approval holder may conduct time limited operations for an item of infrastructure listed in Table 2:
  - (a) Where the infrastructure is listed in Table 1, for a period not exceeding 12 months from the day the works approval holder meets the requirements of condition 4 for that item of infrastructure; or
  - (b) Where the infrastructure is not listed in Table 1, for a period not exceeding 12 months from the commencement of this works approval; or

- (c) until such time as a licence for that item of infrastructure is granted in accordance with Part V of the *Environmental Protection Act 1986*, if one is granted before the end of the period specified in condition 5(a).

### Time limited operations requirements

6. During time limited operations, the works approval holder must ensure that the premises infrastructure and equipment listed in Table 2 and located at the corresponding infrastructure location is maintained and operated in accordance with the corresponding operational requirement set out in Table 2.

**Table 2: Infrastructure and equipment requirements during time limited operations**

	Site infrastructure and equipment	Operational requirement	Infrastructure location
1.	Stockpile Storage Area (SSA)	(a) Stockpiles must only contain coal or Heavy Mineral Concentrate (HMC). (b) Maximum stockpile height must not exceed 10 m. (c) Coal stockpile batters must be maintained at a slope ratio of 1:3.5. (d) HMC stockpiles must be treated with a dust suppressant (e.g., Gluon) at a minimum of once per year.	As shown in Figure 2 as 'SSA Disturbance Envelope' and in Figure 3 as 'Stockpile Storage Area', 'Drainage swale' and 'rock pitching'
2.	SSA Overburden Storage Area	(a) Only excavated sand material from SSA may be stored in this area.	As shown in Figure 2 as 'SSA Disturbance Envelope' and in Figure 3 as 'Overburden'
3.	Ryan's Road Stockpile Area (RRSA)	(a) Stockpiles must only contain coal or mineral sands (including HMC). (b) Perimeter bunds must prevent surface water ingress.	As shown in Figure 2 as 'RRSA Disturbance Envelope'
4.	Iron-man Gypsum (IMG) Pad	(a) Stockpiles must contain only coal, Iron Man Gypsum (IMG) or Heavy Mineral Concentrate (HMC). (b) Maximum stockpile height must not exceed 10 m. (c) Stockpile batters must be maintained at a slope ratio of 1:3.5 (d) Drainage infrastructure must be maintained to direct runoff via a rock-filtered outlet channel. (e) Perimeter bunds must prevent surface water ingress. (f) Coal stockpiles must be pad-rolled as required to maintain batter angles and reduce wind-induced spontaneous combustion risk. (g) Water application to access roads must be managed to avoid spraying coal, minimising combustion risk.	As shown in Figure 2 as 'IMG Storage Pad'
5.	All stockpile storage areas	(a) Daily inspections must be conducted to ascertain:	As per respective locations noted above.

	Site infrastructure and equipment	Operational requirement	Infrastructure location
	(SSA, RRSA, IMG Pad)	<ul style="list-style-type: none"> <li>i. Coal stockpile batter ratio of 1:3.5 is maintained.</li> <li>ii. Integrity and functionality of perimeter bunds and stormwater infrastructure.</li> <li>iii. Presence of visual indicators of smouldering hotspots.</li> </ul> (b) All observations and corrective actions must be recorded.	

### Compliance reporting

7. The works approval holder must submit to the CEO a report on the time limited operations within 30 calendar days of the completion date of time limited operations or 30 calendar days before the expiration date of the works approval, whichever is the sooner.
8. The works approval holder must ensure the report required by condition 7 includes the following:
  - (a) a summary of the time limited operations;
  - (b) a review of performance and compliance against the conditions of the works approval; and
  - (c) where the manufacturer's design specifications and the conditions of this works approval have not been met, what measures will the works approval holder take to meet them, and what timeframes will be required to implement those measures.

### Records and reporting (general)

9. The works approval holder must record the following information in relation to complaints received by the works approval holder (whether received directly from a complainant or forwarded to them by the Department or another party) about any alleged emissions from the premises:
  - (a) the name and contact details of the complainant, (if provided);
  - (b) the time and date of the complaint;
  - (c) the complete details of the complaint and any other concerns or other issues raised; and
  - (d) the complete details and dates of any action taken by the works approval holder to investigate or respond to any complaint.
10. The works approval holder must maintain accurate and auditable books including the following records, information, reports, and data required by this works approval:
  - (a) the works conducted in accordance with condition 1; and
  - (b) complaints received under condition 9.
11. The books specified under condition 10 must:
  - (a) be legible;
  - (b) if amended, be amended in such a way that the original version(s) and any subsequent amendments remain legible and are capable of retrieval;

- (c) be retained by the works approval holder for the duration of the works approval; and
- (d) be available to be produced to an inspector or the CEO as required.

## Definitions

In this works approval, the terms in Table 3 have the meanings defined.

**Table 3: Definitions**

Term	Definition
AEP	Annual Exceedance Probability
AHD	Australian Height Datum
annual period	a 12 month period commencing from 1 April until 31 May of the immediately following year.
books	has the same meaning given to that term under the EP Act.
CEO	means Chief Executive Officer. CEO for the purposes of notification means: Director General Department administering the <i>Environmental Protection Act 1986</i> Locked Bag 10 Joondalup DC WA 6919 <a href="mailto:info@dwer.wa.gov.au">info@dwer.wa.gov.au</a>
Department	means the department established under section 35 of the <i>Public Sector Management Act 1994</i> and designated as responsible for the administration of Part V Division 3 of the EP Act.
discharge	has the same meaning given to that term under the EP Act.
emission	has the same meaning given to that term under the EP Act.
Environmental Compliance Report	means a report to satisfy the CEO that the conditioned infrastructure has been constructed in accordance with the works approval.
EP Act	<i>Environmental Protection Act 1986 (WA)</i> .
EP Regulations	Environmental Protection Regulations 1987 (WA).
ha	hectares
MDD	maximum dry density
premises	the premises to which this licence applies, as specified at the front of this licence and as shown on the premises map (Figure 1)

Term	Definition
	in Schedule 1 to this works approval.
prescribed premises	has the same meaning given to that term under the EP Act.
time limited operations	refers to the operation of the infrastructure and equipment identified under this works approval that is authorised for that purpose, subject to the relevant conditions.
waste	has the same meaning given to that term under the EP Act.
works approval	refers to this document, which evidences the grant of the works approval by the CEO under section 54 of the EP Act, subject to the conditions.
works approval holder	refers to the occupier of the premises being the person to whom this works approval has been granted, as specified at the front of this works approval.

---

**END OF CONDITIONS**

## Schedule 1: Maps

### Premises map

The boundary of the prescribed premises is shown in the map below (Figure 1).



Figure 1: Map of the boundary of the prescribed premises (red outline)

## Infrastructure maps

The locations of the stockpiles are shown in the map below (Figure 2).

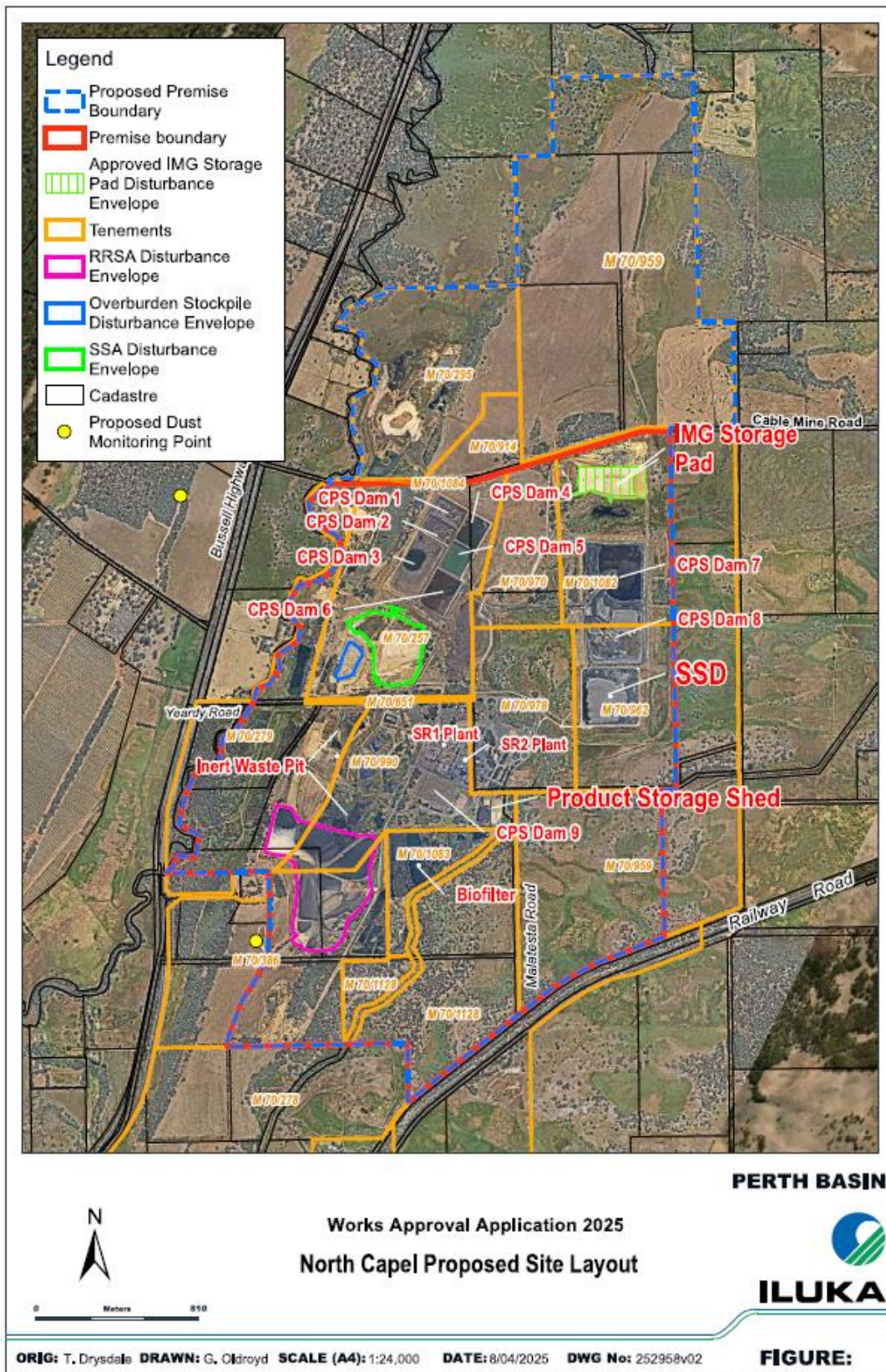


Figure 2: Map of the stockpile locations

The layout of the SSA and SSA Overburden Placement Areas are shown in the map below (Figure 3).

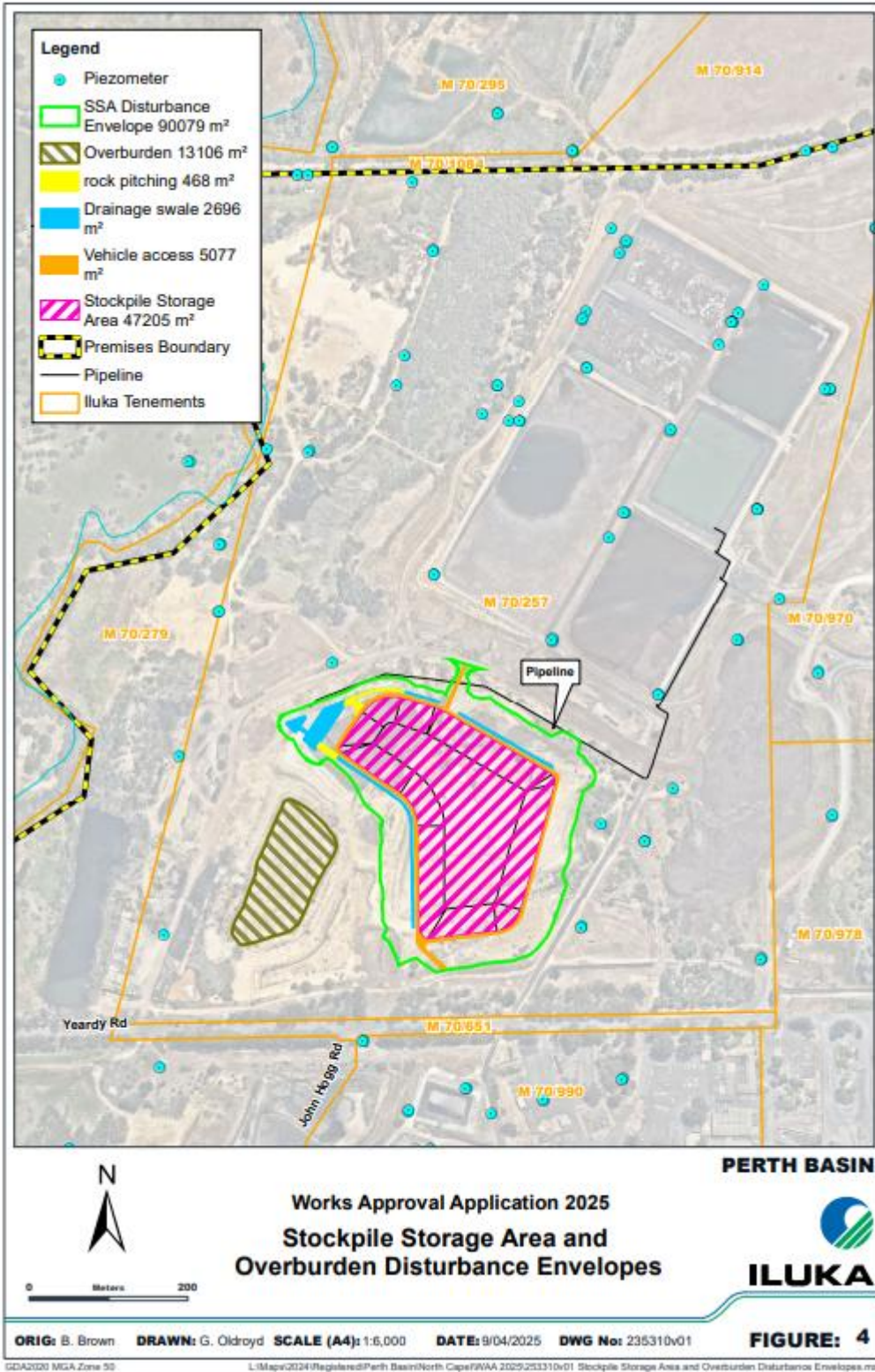


Figure 3: SSA and SSA Overburden Placement area layout