



<b>Works approval number</b>	W3202/2026/1
<b>Works approval holder</b>	Main Roads Western Australia Don Aitken Centre
<b>Registered business address</b>	Waterloo Crescent East Perth WA 6004
<b>DWER file number</b>	INS-0003202
<b>Duration</b>	10/04/2026 to 31/12/2028
<b>Date of issue</b>	10/04/2026
<b>Premises details</b>	Mobile Concrete Batching Plant Legal description - Lot 33 on Deposited Plan 240249 Crown Land Title Volume LR3143 Folio 733 As defined by the coordinates in Schedule 2

<b>Prescribed premises category description (Schedule 1, <i>Environmental Protection Regulations 1987</i>)</b>	<b>Assessed production capacity</b>
Category 77: Concrete batching or cement products manufacturing: premises on which cement products or concrete are manufactured for use at places or premises other than those premises	175,200 tonnes per year

This works approval is granted to the works approval holder, subject to the attached conditions, on 10 April 2026, by:

**Melissa Chamberlain**

**Manager Process Industries**

**Statewide Delivery (Environmental Regulation)**

an officer delegated under section 20 of the *Environmental Protection Act 1986* (WA)

## Works approval history

Date	Reference number	Summary of changes
10/04/2026	W3202/2026/1	Works approval granted.

## Interpretation

In this works approval:

- (a) the words 'including', 'includes' and 'include' in conditions mean "including but not limited to", and similar, as appropriate;
- (b) where any word or phrase is given a defined meaning, any other part of speech or other grammatical form of that word or phrase has a corresponding meaning;
- (c) where tables are used in a condition, each row in a table constitutes a separate condition;
- (d) any reference to an Australian or other standard, guideline, or code of practice in this works approval:
  - (i) if dated, refers to that particular version; and
  - (ii) if not dated, refers to the latest version and therefore may be subject to change over time;
- (e) unless specified otherwise, any reference to a section of an Act refers to that section of the EP Act; and
- (f) unless specified otherwise, all definitions are in accordance with the EP Act.

**NOTE:** This works approval requires specific conditions to be met but does not provide any implied authorisation for other emissions, discharges, or activities not specified in this works approval.

# Works approval conditions

The works approval holder must ensure that the following conditions are complied with:

## Construction phase

### Infrastructure and equipment

1. The works approval holder must:
  - (a) construct and/or install the infrastructure and/or equipment;
  - (b) in accordance with the corresponding design and construction / installation requirements; and
  - (c) at the corresponding infrastructure location; and
  - (d) within the corresponding timeframe,
 as set out in Table 1.

**Table 1: Design and construction / installation requirements**

	Infrastructure	Design and construction / installation requirements	Infrastructure location
1.	Mobile Concrete Batching Plant	a) Must produce no more than 75m <sup>3</sup> per hour of concrete. b) Must be equipped with: <ol style="list-style-type: none"> <li>i. Aggregate weigh hopper with no more than 12m<sup>3</sup> capacity;</li> <li>ii. Cement weigh hopper with reverse pulse dust filter and a capacity of no more than 4.9 tonnes;</li> <li>iii. Water storage tank with no more than 8,000L capacity;</li> <li>iv. Rubber discharge conveyor with dust suppression sprays mounted around the discharge hopper;</li> <li>v. 80 kVA generator which must be mounted in an acoustic enclosure; and</li> <li>vi. Air compressor which can compress 28 cubic feet per minute.</li> </ol> c) Must be located on an impermeable earthen pad with 1m high bunding on the perimeter, except the front-end loader ramp to the hoppers.	As depicted in Schedule 1, Figure 2 (I.D. 1)
2.	Cement Silo	a) Must be installed with: <ol style="list-style-type: none"> <li>i. Overfill protection;</li> <li>ii. Reverse pulse filter ducted to 1.0m from the ground;</li> <li>iii. Folding silo handrails;</li> <li>iv. Wind up ladder access to silo roof;</li> <li>v. Quick release silo inspection hatches;</li> <li>vi. Shedder angle mounted above silo horizontal screw; and</li> <li>vii. Sliding shut-off plate above the horizontal screw.</li> </ol> b) Must be located on an impermeable earthen pad with	As depicted in Schedule 1, Figure 2 (I.D. 2)

	Infrastructure	Design and construction / installation requirements	Infrastructure location
		at least 1m high bunding on the perimeter.	
3.	Slurry Pit / Settlement Pond (Wedge Pit)	a) Must have a volume of at least 23.76m <sup>3</sup> . b) Must be constructed with a concrete apron around the perimeter on three sides with a thickness of at least 700mm.	As depicted in Schedule 1, Figure 2 (I.D. 3)
4.	Wash out Pits (2x 30kL)	a) Must have a total volume of at least 60kL. b) Must be constructed with a removable steel gate at entry and spoon drain at rear. c) Wastewater must be stored in the pits until removed by a controlled waste carrier to a licensed wastewater treatment facility.	As depicted in Schedule 1, Figure 2 (I.D. 4)
5.	Load Bay Slab and Slump Stand Area	a) Load bay slab must undergo slump testing, temperature checks and compressive strength testing.	As depicted in Schedule 1, Figure 2 (I.D. 5)
6.	Chiller	a) Refrigerant must be stored in a self-bunded container.	As depicted in Schedule 1, Figure 2 (I.D. 7)
7.	Diesel Storage Tanks	a) Must hold no more than 50,000L of diesel. b) Must be stored within a bunded container in accordance with <i>AS1940 The storage and handling of flammable and combustible liquids</i> .	As depicted in Schedule 1, Figure 2 (I.D. 9)
8.	220 kVA Generator	a) Must be located in a self-bunded container.	As depicted in Schedule 1, Figure 2 (I.D. 11)

## Compliance reporting

2. The works approval holder must within 30 calendar days of an item of infrastructure or equipment required by condition 1 being constructed and/or installed:
  - (a) undertake an audit of their compliance with the requirements of condition 1; and
  - (b) prepare and submit to the CEO an Environmental Compliance Report on that compliance.
  
3. The Environmental Compliance Report required by condition 2, must include as a minimum the following:
  - (a) certification that the items of infrastructure or component(s) thereof, as specified in condition 1, have been constructed in accordance with the relevant requirements specified in condition 1;
  - (b) as constructed plans and a detailed site plan for each item of infrastructure or component of infrastructure specified in condition 1; and
  - (c) be signed by a person authorised to represent the works approval holder and contains the printed name and position of that person.

## Time limited operations phase

### Commencement and duration

4. The works approval holder may only commence time limited operations of infrastructure identified in condition 1 where the Environmental Compliance Report as required by condition 2 has been submitted by the works approval holder.
5. The works approval holder may conduct time limited operations for an item of infrastructure specified in condition 1 (as applicable):
  - (a) for a period not exceeding 180 calendar days from the day the works approval holder meets the requirements of condition 4 for that item of infrastructure; or
  - (b) until such time as a registration for that item of infrastructure is granted in accordance with Part V of the Environmental Protection Act 1986, if one is granted before the end of the period specified in condition 5(a).

### Records and reporting (general)

6. The works approval holder must record the following information in relation to complaints received by the works approval holder (whether received directly from a complainant or forwarded to them by the Department or another party) about any alleged emissions from the premises:
  - (a) the name and contact details of the complainant, (if provided);
  - (b) the time and date of the complaint;
  - (c) the complete details of the complaint and any other concerns or other issues raised; and
  - (d) the complete details and dates of any action taken by the works approval holder to investigate or respond to any complaint.
7. The works approval holder must maintain accurate and auditable books including the following records, information, reports, and data required by this works approval:
  - (a) the works conducted in accordance with condition 1;
  - (b) any maintenance of infrastructure that is performed in the course of complying with condition 1;
  - (c) complaints received under condition 6.
8. The books specified under condition 7 must:
  - (a) be legible;
  - (b) if amended, be amended in such a way that the original version(s) and any subsequent amendments remain legible and are capable of retrieval;
  - (c) be retained by the works approval holder for the duration of the works approval; and
  - (d) be available to be produced to an inspector or the CEO as required.

## Definitions

In this works approval, the terms in Table 2 have the meanings defined.

**Table 2: Definitions**

Term	Definition
books	has the same meaning given to that term under the EP Act.
CEO	means Chief Executive Officer. CEO for the purposes of notification means: Director General Department administering the <i>Environmental Protection Act 1986</i> Locked Bag 10 Joondalup DC WA 6919 <a href="mailto:info@dwer.wa.gov.au">info@dwer.wa.gov.au</a>
Department	means the department established under section 35 of the <i>Public Sector Management Act 1994</i> and designated as responsible for the administration of Part V Division 3 of the EP Act.
discharge	has the same meaning given to that term under the EP Act.
emission	has the same meaning given to that term under the EP Act.
Environmental Compliance Report	means a report to satisfy the CEO that the conditioned infrastructure and/or equipment has been constructed and/or installed in accordance with the works approval.
EP Act	<i>Environmental Protection Act 1986</i> (WA).
EP Regulations	<i>Environmental Protection Regulations 1987</i> (WA).
premises	the premises to which this works approval applies, as specified at the front of this works approval and as shown on the premises map (Figure 1) in Schedule 1 to this works approval.
prescribed premises	has the same meaning given to that term under the EP Act.
time limited operations	refers to the operation of the infrastructure and equipment identified under this works approval that is authorised for that purpose, subject to the relevant conditions.
works approval	refers to this document, which evidences the grant of the works approval by the CEO under section 54 of the EP Act, subject to the conditions.
works approval holder	refers to the occupier of the premises being the person to whom this works approval has been granted, as specified at the front of this works approval.

---

**END OF CONDITIONS**

# Schedule 1: Maps

## Premises map

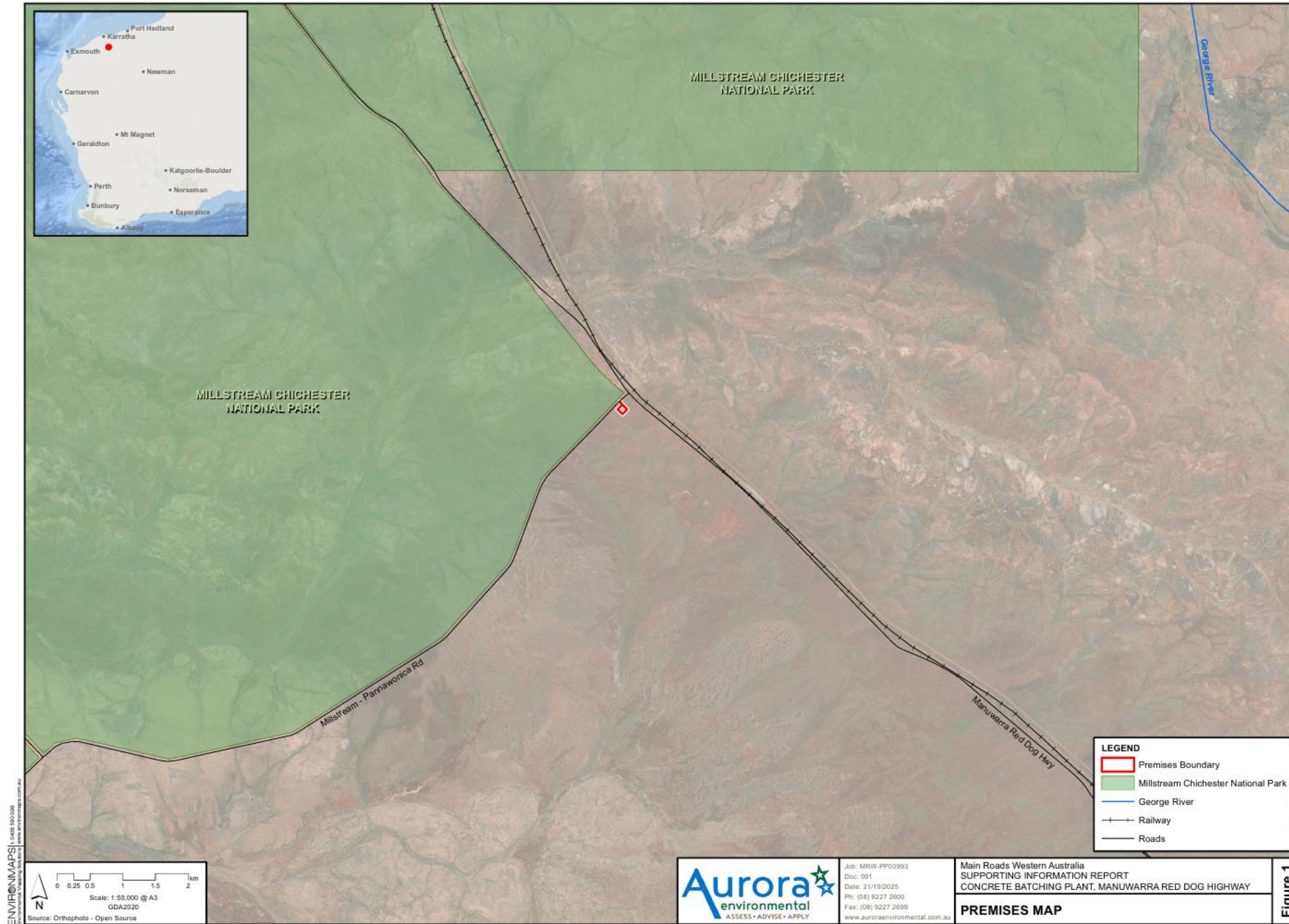


Figure 1: Map of the boundary of the prescribed premises

## Proposed site layout map

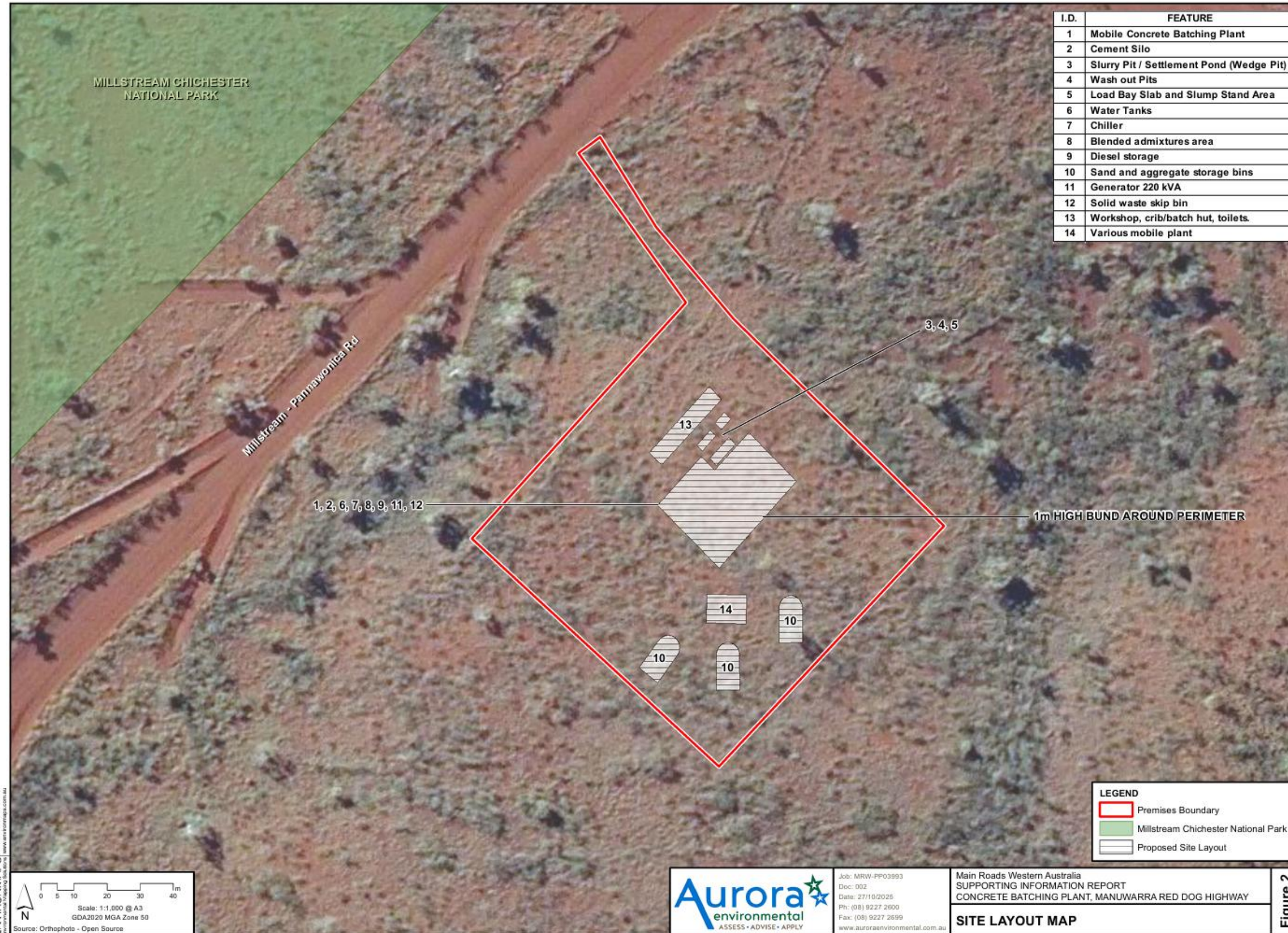


Figure 2: Map of the proposed site layout of the prescribed premises

## Schedule 2: Premises boundary

The corners of the premises boundary are the coordinates listed in Table 1.

**Table 1: Premises boundary coordinates**

	Latitude	Longitude
1.	-21.57281893380	117.21632399200
2.	-21.57306527110	117.21648897300
3.	-21.57331516390	117.21671477400
4.	-21.57387982950	117.21733054400
5.	-21.57453829240	117.21667390000
6.	-21.57391632620	117.21595082900
7.	-21.57327033650	117.21657555300
8.	-21.57286232810	117.21626097300
9.	-21.57281893380	117.21632399200