



Licence number	L3128/2025/1
Licence holder	Craig Mostyn Farms Pty Ltd
ACN	127 068 115
Registered business address	Level 1, 6 Short Street FREMANTLE WA 6160
Duration	17/04/2026 to 16/04/2046
Premises details	Wongan Hills Piggery 2293 Yerecoin Southeast Road LAKE NINAN WA 6603
	Legal description – Part of Lot 1793 on Plan 134435

Prescribed premises category description (Schedule 1, Environmental Protection Regulations 1987)	Assessed design capacity
Category 2: Intensive piggery: premises on which pigs are fed, watered and housed in pens.	No more than 8,000 pigs with a maximum of 8240 SPU at any one time

This licence is granted to the licence holder, subject to the attached conditions, on 17 April 2026, by:

**SNR ENVIRONMENTAL OFFICER, PROCESS INDUSTRIES
STATE-WIDE DELIVERY (ENVIRONMENTAL REGULATION)**

an officer delegated under section 20 of the *Environmental Protection Act 1986* (WA)

Licence history

Date	Ref number	Summary of changes
17/04/2026	L3128/2025/1 APP-0028997	Licence granted for existing piggery complex (8,240 SPU capacity) and improvement works

Interpretation

In this licence:

- (a) the words ‘including’, ‘includes’ and ‘include’ in conditions mean ‘including but not limited to’, and similar, as appropriate;
- (b) where any word or phrase is given a defined meaning, any other part of speech or other grammatical form of that word or phrase has a corresponding meaning;
- (c) where tables are used in a condition, each row in a table constitutes a separate condition;
- (d) any reference to an Australian or other standard, guideline or code of practice in this licence:
 - (i) if dated, refers to that particular version; and
 - (ii) if not dated, refers to the latest version and therefore may be subject to change over time;
- (e) unless specified otherwise, any reference to a section of an Act refers to that section of the EP Act; and
- (f) unless specified otherwise, all definitions are in accordance with the EP Act.

NOTE: This licence requires specific conditions to be met but does not provide any implied authorisation for other emissions, discharges, or activities not specified in this licence.

Licence conditions

The licence holder must ensure that the following conditions are complied with:

Premises operation

1. The licence holder must ensure the site infrastructure and equipment listed in Table 1 is maintained in accordance with the corresponding design requirements in that table.

Table 1: Infrastructure and equipment requirements

	Infrastructure and equipment	Description and design requirements	Infrastructure location
1	36 x shelters: <ul style="list-style-type: none"> • 6 x weaner shelters (22 m x 12 m) • 28 x grower/finisher shelters (25 m x 10 m) • Hospital shelter (5 m x 4 m) • Holding shelter (25 m x 10 m) 	(a) All shelters must be maintained with: <ol style="list-style-type: none"> (i) a concrete floor or a base that meets the permeability criteria of less than 1×10^{-9} m/s of at least 300 mm; (ii) sufficient bunding that prevents runoff of effluent to the environment; and (iii) a raised base that prevents overland water running into the shelter; 	“Weaner ecoshelters”, “Grower and Finishers ecoshelters”, “Hospital shelter”, and “Holding shed”, as shown in map in Schedule 1
2	Composting area (300 m x 130 m): <ul style="list-style-type: none"> • Impervious hardstand and bunding¹ • Drainage basin¹ 	(a) The compost area must be maintained: <ol style="list-style-type: none"> (i) as a single area for the storage and processing of spent bedding and carcasses; (ii) as a sloped area to facilitate drainage of leachates and surface runoff to the 	“Compost Area”, as shown in map in Schedule 1

	Infrastructure and equipment	Description and design requirements	Infrastructure location
		drainage basin; (iii) with a floor comprising an impermeable barrier; (iv) with a minimum 300 mm high impermeable bund around the perimeter; (v) to ensure all leachate and surface water runoff can flow freely to the drainage basin; (b) The drainage basin must be maintained: (i) At the lowest point of the compost area; (ii) with an impermeable base and walls; and (iii) with capacity to store all leachate and runover generated from the compost area.	

Improvement works

2. The licence holder must construct the infrastructure listed in Table 2 in accordance with the requirements set out in that table.

Table 2: Improvement works

	Infrastructure or equipment	Construction/installation requirements	Date of completion
1	Composting area	(a) Must be upgraded to comprise an impermeable liner of: (i) concrete; or (ii) clay compacted for a design permeability of 1×10^{-9} m/s or less for a depth of 300 mm; or (iii) a HDPE geomembrane with a manufacturer specified thickness of at least 1.0 mm (or equivalent geosynthetic liner); (b) Where required, permeability and compaction must be demonstrated by geotechnical testing conducted by a qualified professional engineer and in accordance with AS 1289; (c) Must install bunding at least 300 mm high around the entirety of the compost area; (d) A drainage basin must be installed: (i) at the lowest point of the compost area; (ii) that is adequately sized to capture all generated runoff and leachate from the compost area; and (iii) with a lining system that achieves a permeability of $< 1 \times 10^{-9}$ m/s or less;	1 October 2026
2	Shelters	(a) The base of all shelters which do not currently have a concrete base must be upgraded to: (i) a concrete base; or (ii) have the base permeability criteria of less than 1×10^{-9} m/s for a minimum depth of	1 October 2026

	Infrastructure or equipment	Construction/installation requirements	Date of completion
		<p>300 mm demonstrated with a geotechnical assessment;</p> <p>(b) The walls of all shelters with timber walls must be replaced with:</p> <p>(i) concrete walls; or</p> <p>(ii) concrete bunding must be installed to prevent runoff;</p>	
3	Groundwater monitoring bores	<p>(a) Must install a minimum of two groundwater monitoring wells, one up hydraulic gradient and one down hydraulic gradient, in the vicinity of the composting containment dam;</p> <p>(b) Well design, construction and installation must meet the requirements specified in condition 3;</p> <p>(c) Wells must be constructed, developed (purged) and determined to be operational, prior to 1 July 2026.</p>	1 July 2026
4	Carcass composting tunnel	<p>Must be constructed in accordance with Schedule 2 and:</p> <p>(a) The ground floor plan depicted in Figure 1;</p> <p>(b) The elevations presented in Figure 2; and</p> <p>(c) The selection shown in Figure 3.</p>	Not specified

3. The licence holder must design, construct and install groundwater monitoring wells in accordance with the requirements in Table 3.

Table 3: Infrastructure requirements – groundwater monitoring wells

	Item	Design, construction and installation requirements
1	Well design and construction	<p>(a) Each well must be designed and constructed in accordance with ASTM D5092;</p> <p>(b) Each well must be constructed with a screened interval from the water table to a depth of 2 m below and 1 m above the water table and positioned to be capable of detecting groundwater flow and potential leaching from each runoff containment dam;</p> <p>(c) Each well must be installed in accordance with the generic installation requirements illustrated in Schedule 3;</p>
2	Logging of boreholes	<p>(a) Soil samples must be collected and logged during installation of each well;</p> <p>(b) A record of the geology encountered during drilling must be kept and classified in accordance with AS 1726;</p> <p>(c) Any observations of staining, odours or other indications of contamination must be included in the bore log;</p>
3	Well construction log	<p>(a) Well construction details must be documented within a well construction log to demonstrate compliance with ASTM D5092;</p> <p>(b) The construction logs must include elevations of the top of casing position to be used as the reference point for water level measurements, screen positions and the elevation of the ground surface protective installations;</p>
4	Well development	<p>(a) Installed wells must be developed after drilling to remove fine sand, silt, clay and any drilling mud residues from around the well screen to ensure the hydraulic functioning of the well;</p> <p>(b) A detailed record must be kept of well development activities and included in the well construction log.</p>

Improvement works – compliance reporting

4. The licence holder must, within 30 calendar days of the improvement works specified in condition 2 being completed:
 - (a) undertake an audit of their compliance with the requirements of condition 2; and
 - (b) prepare and submit to the CEO a report on that compliance.
5. The report required by condition 4, must include as a minimum:
 - (a) certification whether the items of infrastructure or components thereof, as specified in condition 2, have been constructed in accordance with the relevant requirements specified in that condition;
 - (b) as constructed plans and an updated site plan outlining each item of infrastructure or component of infrastructure specified in condition 2;
 - (c) details that demonstrate how the drainage basin for the compost area is adequately sized to store all leachate and runover generated from the compost area with a 1:10-year spill frequency;
 - (d) evidence that all shelters on the premises have an impermeable base (i.e. concreted or compacted for a permeability of 1×10^{-9} m/s or less);
 - (e) a well construction report, including certification by the driller, whether the groundwater monitoring wells specified in condition 2 have been designed, constructed and installed in accordance with the relevant requirements specified in condition 3; and
 - (f) be signed by a person authorised to represent the licence holder and contains the printed name and position of that person.
6. Subject to condition 5(a), where an item of infrastructure or component of infrastructure has been certified as not being constructed, or does not comply with the corresponding requirements, or contains material defects, the licence holder must:
 - (a) correct the non-compliant or defective works, prior to re-certifying in accordance with condition 5(a); or
 - (b) provide to the CEO a description of, and explanation for, any departures from the requirements specified in Table 2 that do not require rectification and do not constitute a material defect along with the report required by condition 4.

Operational requirements

7. The licence holder must not hold more than 8,000 pigs on the premises at any one time.
8. The licence holder must ensure the premises infrastructure listed in Table 3 is operated in accordance with the requirements set out in that table.

Table 4: Infrastructure operation requirements

	Infrastructure	Operational requirement
1.	Pig shelters	(a) Stocking numbers for each individual shelter must not exceed the following at any one time: <ol style="list-style-type: none"> (i) Weaner shelters – 400 pigs per shelter; (ii) Grower/Finisher shelters – 200 pigs per shelter; (iii) Hospital shelter – 30 pigs; (iv) Holding shed – 240 pigs; (b) The holding shed must only be used for the temporary holding and processing of pigs prior to transport; (c) Shelters must be cleaned and spent bedding must be replaced within each shelter at least once every 8 weeks; (d) Spent bedding removed from shelters must be stored on the concrete base of each shelter post-cleaning, and be transported: <ol style="list-style-type: none"> (i) to the compost area on the same day as cleaning; or

	Infrastructure	Operational requirement
		<ul style="list-style-type: none"> (ii) off-site for further processing or disposal, to a premises that is licensed to accept that kind of waste; (e) Deceased pigs and foreign materials must be removed from shelters by the end of the working day in which they were discovered; (f) Following post mortem (if required), deceased pigs removed from shelters must be directly taken: <ul style="list-style-type: none"> (i) to the compost area; or (ii) off-site for further processing or disposal, to a premises that is licensed to accept that kind of waste, such as a licensed composting facility or licensed solid waste facility;
3	Compost area	<p><u>General maintenance</u></p> <ul style="list-style-type: none"> (a) Must be maintained to ensure all leachate and surface water runoff can flow freely to the drainage basin; (b) Must be operated to ensure stormwater runoff is excluded from entering the area; <p><u>Manure storage and/or processing and mortalities composting</u></p> <ul style="list-style-type: none"> (c) Storage and/or processing of spent bedding and mortalities must only occur within the compost area; and (d) Only low risk feedstocks may be brought onto the premises as supplementary organic material for use in the composting process.

Emissions and discharges

Manure and mortalities management

9. The licence holder must ensure manure (including spent bedding), is:
- (a) managed as an unprocessed material, by taking off-site to a premises that is lawfully able to accept that kind of waste, such as a licensed composting or organics recycling facility or licensed solid waste facility; and/or
 - (b) processed (i.e., pasteurised), to significantly reduce the number pathogens, by:
 - (i) maintaining the core of the windrow mass at 55°C or higher for 15 consecutive days or longer;
 - (ii) turning the windrow at least 5 times during the 15-day period, with the outer material being effectively turned to the inside of the windrow mass to ensure the whole mass is subjected to the required temperature and process; and
 - (iii) ensuring there is a declining trend of the peak temperature of the compost pile after turning with suitable moisture content.
10. For manure to be considered processed manure, the licence holder must conduct monitoring and keep accurate records to demonstrate the processing requirements in condition 9 have been met, including:
- (a) daily monitoring of temperature and moisture content before and during the pasteurisation phase; and
 - (b) weekly monitoring of temperature and moisture content after the pasteurisation phase has been completed.
- otherwise, it must be considered to be unprocessed material and be managed in accordance with condition 9(a).
11. The licence holder must ensure mortalities are:
- (a) processed (i.e., pasteurised), to significantly reduce the number of pathogens, prior to removing off-site in accordance with condition 13; and/or

- (b) taken off-site to a premises that is lawfully able to accept that kind of waste, such as a licensed rendering facility or a licensed composting or organics recycling facility.
12. For mortalities processed in accordance with condition 11(a), the licence holder must ensure:
- (a) the core of the mass is maintained at 55°C or higher for at least 3 consecutive days;
 - (b) the whole mass is turned at least once 3 months after the last carcasses were added within each windrow;
 - (c) after turning, the mass is allowed to cure for a period of at least 4 months; and
 - (d) accurate records are kept demonstrating how the requirements of clauses (a), (b) and (c) of this condition have been met.

Off-site removal of manure

13. The licence holder must:
- (a) manage processed manure and mortalities by removing from the premises for off-site reuse; and
 - (b) keep accurate records of the volumes of all processed and unprocessed material removed from the premises.

Monitoring

General monitoring

14. The licence holder must ensure that:
- (a) all water samples are collected and preserved in accordance with AS/NZS 5667.1;
 - (b) all groundwater sampling is conducted in accordance with AS/NZS 5667.11; and
 - (c) all groundwater samples are submitted to and tested by a laboratory with current NATA accreditation for the parameters being measured.
15. The licence holder must ensure quarterly monitoring is undertaken at least 45 days apart.
16. The licence holder must ensure all monitoring equipment used on the premises to comply with conditions of this licence is calibrated in accordance with the manufacturer's specifications.
17. The licence holder must, where the requirements for calibration cannot be practicably met, or a discrepancy exists in the interpretation of the requirements, bring these issues to the attention of the CEO with a report comprising details of any modifications to the methods.

Groundwater monitoring

18. The licence holder must conduct ambient groundwater monitoring in accordance with the requirements of Table 5.

Table 5: Groundwater monitoring requirements

Monitoring point and reference	Parameter	Unit	Averaging period	Monitoring frequency
MW1, MW2, MW3	Standing water level ¹	m (AHD) m (BGL)	Spot sample (in-field)	Biannual ²
	pH ¹	No unit		
	Electrical conductivity @ 25°C ¹	µS/cm	Spot sample (laboratory determined)	
	Total nitrogen, Ammonia nitrogen	mg/L		
	Total phosphorus			
	Total dissolved solids			

Monitoring point and reference	Parameter	Unit	Averaging period	Monitoring frequency
	Biological oxygen demand			
	Na, K, Ca, Mg, Cl, SO ₄ , HCO ₃			

Note 1: In field, non-NATA accredited analysis permitted.

Note 2: The first monitoring event to occur within 30 days of the wells required by condition 2 being installed and becoming operational, and biannual thereafter.

Inputs and outputs

19. The licence holder must monitor and record inputs and outputs in accordance with Table 6.

Table 6: Monitoring and recording of inputs and outputs

Input / Output	Parameter	Units	Frequency
Pigs received and dispatched at the premises	Pigs	Number, specified for each pig class	Aggregated total monthly summary
Mortalities	Pigs, disposal method/location		Monthly
Raw or unprocessed manure removed from the premises in accordance with condition 9(a)	Raw or unprocessed manure (spent bedding and dried pond sludge, or a mixture of the two), details of the receiving premises	Cubic metres or tonnes	Each load removed from the premises, by type
Low risk organic materials brought onto the premises	Organic material type		Each load brought onto the premises, by type
Processed manure removed from the premises	Processed manure		Aggregated total annual summary

Complaints management

20. The licence holder must investigate any complaints received by the licence holder (whether received directly from a complainant or forwarded to them by the department or another party) about any alleged emissions from the premises.
21. Following receipt of a complaint directly from a complainant about any alleged emissions from the premises, the licence holder must:
- respond to the complainant within 72 hours of receipt of the complaint; and
 - within 10 calendar days of receipt of the complaint, provide a summary of the outcomes of any investigation(s) conducted in response to the complaint, including any corrective and preventative action(s) taken in response to the complaint, unless such communication is not requested by the complainant.

Records and reporting

Record-keeping

22. The licence holder must record the following information in relation to complaints received by the licence holder (whether directly from a complainant or forwarded to them by the department or another party) about any alleged emissions from the premises:
- the name and contact details of the complainant (if provided);
 - the time and date of the complaint;
 - the complete details of the complaint and any other concerns or other issues raised;
 - the complete details of any activities being undertaken, where, and the weather and wind conditions at the time of the complaint;

- (e) the complete details and dates of any investigation(s) conducted in response to the complaint;
 - (f) a summary of the findings of any investigation(s) conducted in response to the complaint, including details of the person(s) responsible for the investigation(s);
 - (g) a summary of any corrective and preventative action(s) taken in response to the complaint;
 - (h) a summary of the time taken to respond to the complaint; and
 - (i) a summary of all communications with the complainant.
- 23.** The licence holder must maintain accurate and auditable books including the following records, information, reports, and data required by this licence:
- (a) the calculation of fees payable in respect of this licence;
 - (b) any maintenance of infrastructure that is performed in the course of complying with condition 1;
 - (c) process monitoring records for processed manure and mortalities required by conditions 10 and 12(b);
 - (d) results of groundwater monitoring required by condition 18;
 - (e) records of inputs and outputs in accordance with condition 19; and
 - (f) complaints received under condition 20.
- 24.** The books specified under condition 23 must:
- (a) be legible;
 - (b) if amended, be amended in such a way that the original version(s) and any subsequent amendments remain legible and are capable of retrieval;
 - (c) be retained by the licence holder for the duration of the licence; and
 - (d) be available to be produced to an inspector or the CEO as required.

Notification requirements

- 25.** The licence holder must notify the CEO, within 24 hours of a mass mortalities event and/or an emergency animal disease (EAD) incident, including:
- (a) the number of pigs that have died;
 - (b) the proposed plan for on-site handling and management of all carcasses; and
 - (c) the proposed disposal method and site.

Annual reporting requirements

- 26.** The licence holder must:
- (a) undertake an audit of their compliance with the conditions of this licence during the preceding annual period; and
 - (b) prepare and submit to the CEO, by no later than 1 March in each year, an Annual Audit Compliance Report in the approved form.
 - (c) The licence holder must submit to the CEO, by no later than 1 March in each year, an environmental report containing the information listed in Table 7 for the preceding annual period.

Table 7: Annual environmental report

Condition or table	Parameter
-	Summary of any environmental incidents that have occurred during the annual period and any action taken
Condition 10	Process monitoring records for processed manure
Condition 12	Process monitoring records for mortalities compost
Condition 13	Records of manure taken off-site
Table 5	Results of groundwater monitoring
Table 6	Records of inputs and outputs

Condition or table	Parameter
Condition 22	Complaints summary
Condition 25	Summary of any notifications
Condition 26	Compliance

Definitions

In this licence, the terms in Table 8 have the meanings defined.

Table 8: Definitions

Term	Definition
Annual Audit Compliance Report (AACR)	means a report submitted in a format approved by the CEO (relevant guidelines and templates may be available on the Department's website)
annual period	means a 12-month period commencing from 1 January until 31 December in that same year
AS 1289	means the most recent version and relevant parts of the Australian Standard AS 1289 <i>Methods of testing soils for engineering purposes</i>
AS 1726	means the most recent version and relevant parts of the Australian Standard AS 1726 <i>Geotechnical site investigations</i>
AS 4454	means the most recent version and relevant parts of the Australian Standard AS 4454 <i>Composts, soil conditioners and mulches</i>
AS/NZS 5667.1	means the Australian Standard AS/NZS 5667.1 Water quality – sampling – guidance on the design of sampling programs, sampling techniques and the preservation and handling of samples
AS/NZS 5667.11	means the Australian Standard AS/NZS 5667.6 Water quality – sampling – guidance on sampling of groundwaters
ASTM D5092	means the Active Standard ASTM D5092/D5092M-16 <i>Standard practice for design and installation of groundwater monitoring wells</i>
averaging period	means the time over which a limit or target is measured or a monitoring result is obtained
CEO	means Chief Executive Officer. CEO for the purposes of notification means: Director General Department administering the <i>Environmental Protection Act 1986</i> Locked Bag 10 Joondalup DC WA 6919 info@dwer.wa.gov.au
condition	means a condition to which this licence is subject under s.62 of the EP Act
Department	means the department established under section 35 of the <i>Public Sector Management Act 1994</i> and designated as responsible for the administration of Part V, Division 3 of the EP Act
EAD	Emergency Animal Disease; means a disease that is: (a) exotic to Australia; (b) a variant of an endemic disease; (c) a serious infectious disease of unknown or uncertain cause; or (d) a severe outbreak of a known endemic disease; and that is considered to be of national significance with serious social or trade implications
EP Act	means the <i>Environmental Protection Act 1986</i> (WA)
licence	means this document, which evidences the grant of a licence by the CEO under section 57 of the EP Act, subject to the specified conditions contained within
licence holder	refers to the occupier of the premises being the person to whom this licence has been granted, as specified at the front of this licence
licensed composting	means a premises that holds a current and valid licence granted by the CEO

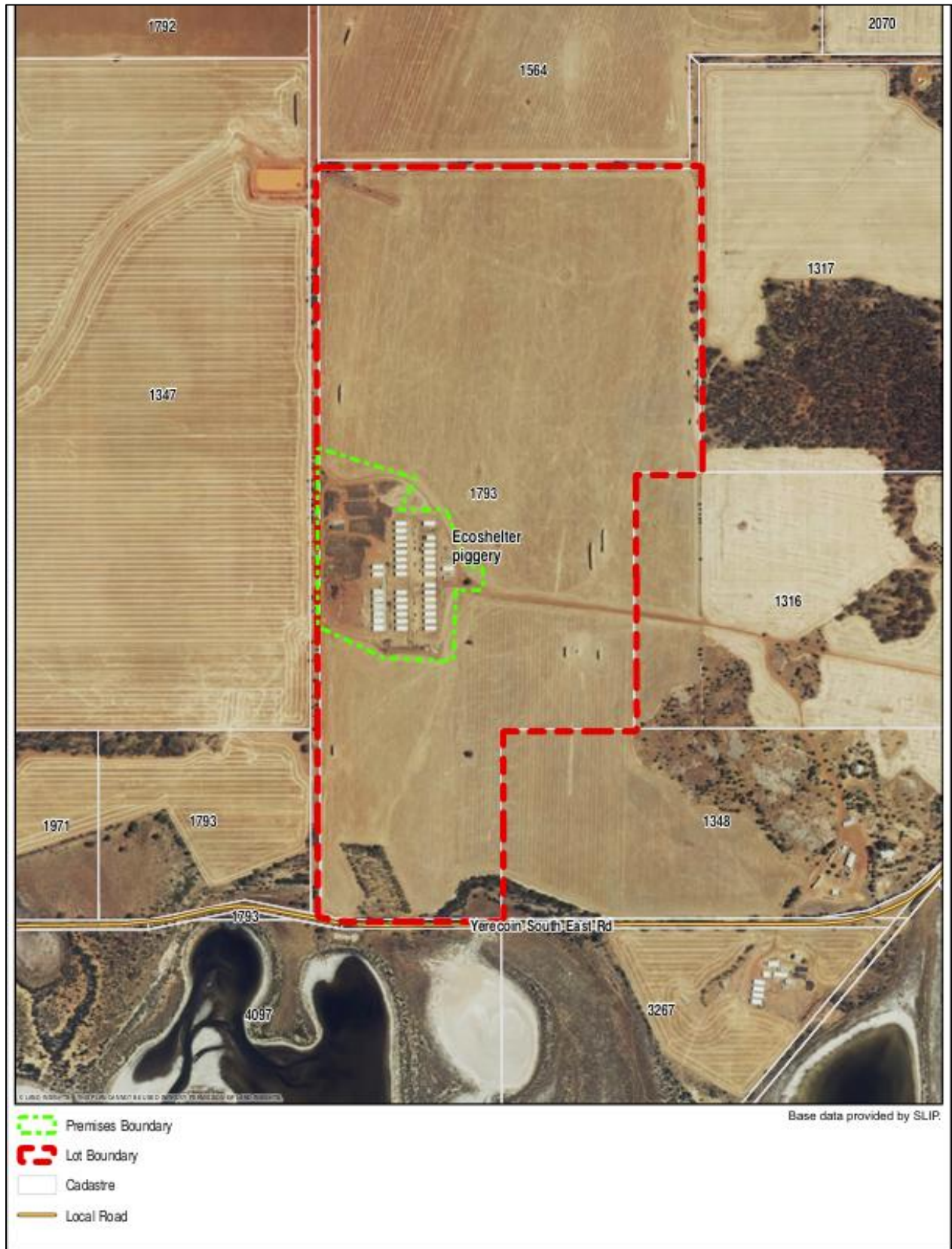
Term	Definition
facility	under section 57 of the EP Act for a compost manufacturing and soil blending facility (category 67A)
licensed solid waste facility	means a premises that holds a current and valid licence granted by the CEO under section 57 of the EP Act for a solid waste facility (category 61A)
low risk organic material	means green waste derived from controlled collections and landscaping sources (e.g. grass, leaves, plants, branches, etc.), untreated timber (e.g. sawdust, wood shavings, timber off-cuts, etc.) and natural fibrous organics (e.g. peat, seed hulls/husks, straw, bagasse and other natural organic fibrous organics)
manure	means faeces and urine. For the purpose of this licence, manure also means spent bedding
NATA	National Association of Testing Authorities, Australia
NATA accreditation	means in relation to the analysis of a sample that the laboratory is NATA accredited for the specified analysis at the time of the analysis
pasteurisation	means a process whereby organic materials are treated to significantly reduce the numbers of plant and animal pathogens, and plant propagules
pig class	refers to the different classes of pigs, depending on sex, age, weight and/or purpose within a piggery, including males (gilts, boars), females (dry sows, lactating sows), and progeny (suckers, weaners, growers, finishers and heavy finishers)
premises	refers to the premises to which this licence applies, as specified at the front of this licence and as shown on the map in Schedule 1 to this licence
prescribed premises	has the same meaning given to that term under the EP Act
processed manure	means manure that has been processed to significantly reduce the number of pathogens and plant propagules. For the purpose of this licence, processed manure means manure that meets the processing and testing requirements specified in condition 10
qualified professional engineer	means a person who: (a) holds a tertiary academic qualification specialising in geotechnical or civil engineering; and (b) has a minimum of 3 years of experience working in the area of geotechnical or civil engineering; or is otherwise approved by the CEO to act in this capacity
spot sample	means a discrete sample representative at the time and place at which the sample is taken
Standard Pig Unit (SPU)	has the same meaning given to that term under the <i>National Environmental Guidelines for Indoor Piggeries (NEGIP)</i> , Australian Pork Ltd, May 2018, being a pig equivalent to a grower pig (average weight 40 kg) based on volatile solids production in manure

END OF CONDITIONS

Schedule 1: Maps

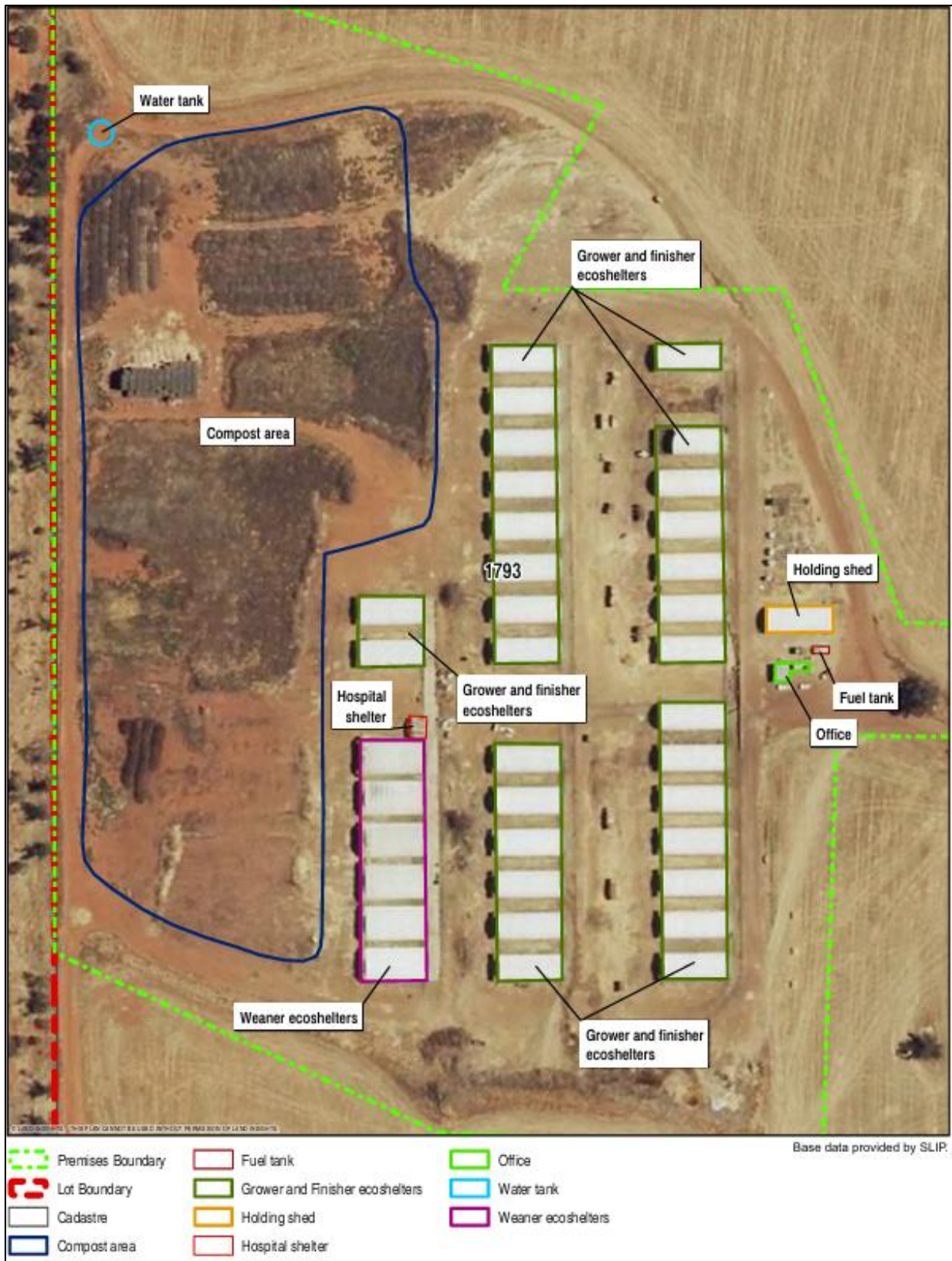
Premises map

The boundary of the prescribed premises is shown by the green dashed line in the map below.



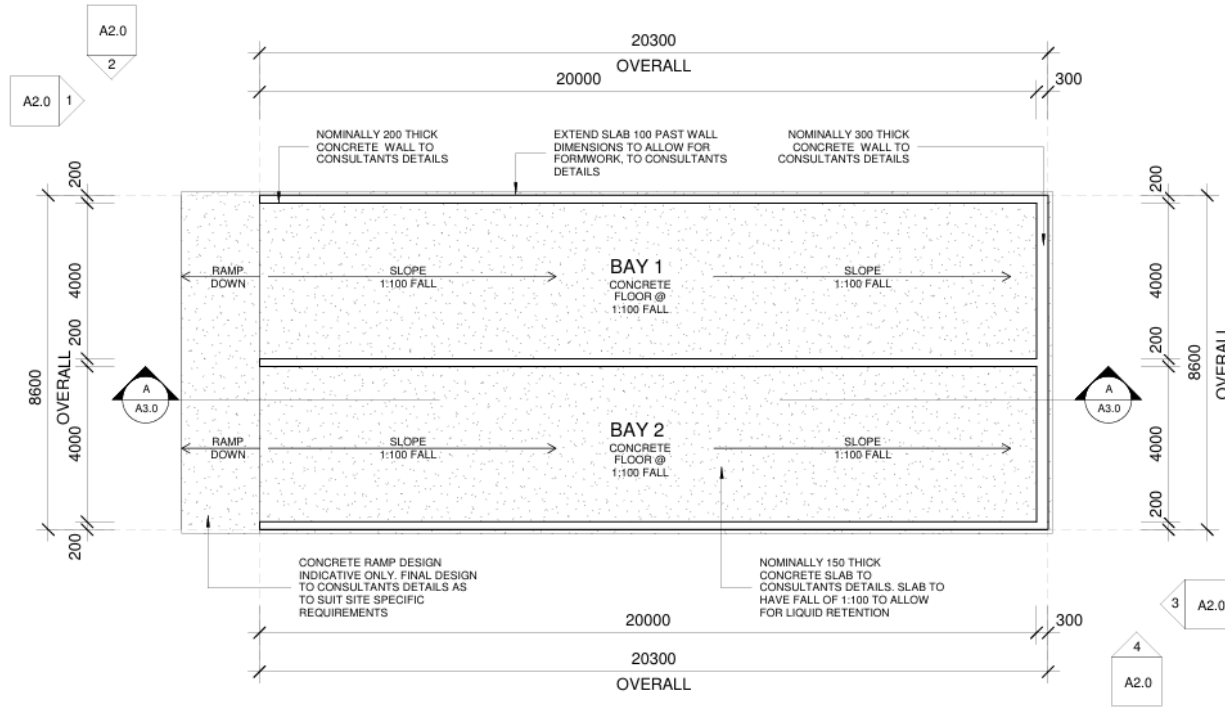
Map of infrastructure

The location of key piggery infrastructure is shown in the map below.



Schedule 2: Plans

Construction drawings – Carcass tunnel



MATERIAL NOTES

CONCRETE NOTE:
ALL CONCRETE TO BE 32Mpa STRUCTURAL GRADE, AS PER CONSULTANTS SPECIFICATION

REINFORCING NOTE:
SL62 REINFORCING MESH TO ALL WALLS & FLOOR SLAB, AS PER CONSULTANTS SPECIFICATION

STARTER BAR NOTE:
STARTER BARS TO BE DRILLED INTO FLOOR TO SUPPORT WALLS – 16mm x 1.0mtr D BAR @ 600mm CENTRES, AS PER CONSULTANTS SPECIFICATION

WATERPROOFING NOTE:
NOMINALLY XYPEX 5000C & KUNISEAL WATERPROOFING AGENTS, TO BE CONFIRMED BETWEEN CLIENT AND CONSULTANT

GROUND FLOOR PLAN

1 : 100

GROUND FLOOR PLAN	COMPOST TUNNEL	DATE: 28/09/2020 8:29:50 AM
	C.M. FARMS	JOB: 2020-0005
DESIGN STAGE	YERECOIN SOUTH EAST ROAD	DRW: JRT
	WONGAN HILLS WA	SCALE: 1 : 100
drawing status:		page: 780
		CLIENT APPROVAL A1.0

Schedule 3: Monitoring well installation requirements

The following diagram illustrates generic monitoring well installation requirements.

