



<b>Works approval number</b>	W5584/2014/1
<b>Works approval holder</b>	Chevron Australia Pty Ltd
<b>ACN</b>	086 197 757
<b>Registered business address</b>	Chevron Australia Pty Ltd Level 24, QV1 250 St Georges Tce PERTH WA 6000
<b>DWER file number</b>	2013/004020-2
<b>Duration</b>	23/04/2014 to 27/10/2026
<b>Date of amendment</b>	23 April 2026
<b>Premises details</b>	LNG and Domgas Plant Part of Lot 238 on Deposited Plan 195206 and Part Lots 567 and 569 on Deposited Plan 71345 TALANDJI WA 6710  As defined by the coordinates in Schedule 2

<b>Prescribed premises category description (Schedule 1, <i>Environmental Protection Regulations 1987</i>)</b>	<b>Assessed design capacity</b>
Category 10: Oil or gas production from wells: premises, whether on land or offshore, on which crude oil, natural gas or condensate is extracted from below the surface of the land or the seabed, as the case requires, and is treated or separated to produced stabilised crude oil, purified natural gas or liquefied hydrocarbon gases.	8.9 million tonnes per annum (liquefied natural gas (LNG))  200 terajoules (TJ) (domestic gas)
Category 34 - Oil or gas refining: premises on which crude oil, condensate or gas is refined or processed.	4,494,000 cubic metres (m3) per annum (Condensate)
Category 52 - Electric power generation: premises (other than premises within category 53 or an emergency or standby power generating plant) on which electrical power is generated using a fuel.	184 MW (including 12 MW of backup power)

This amended works approval is granted to the works approval holder, subject to the attached conditions, on 23 April 2026, by:

**Manager, Process Industries**

an officer delegated under section 20 of the *Environmental Protection Act 1986* (WA)

## Works Approval Conditions

### 1 General

#### 1.1 Interpretations

- 1.1.1. In the Works Approval, definitions from the Environmental Protection Act 1986 apply unless the contrary intention appears.
- 1.1.2. In the Works Approval, unless the contrary intention appears:

**'Act'** means the *Environmental Protection Act 1986*;

**'CEO'** means Director General of the Department administering the *Environmental Protection Act 1986*;

**'CEO'** for the purpose of correspondence means:

Director General  
Department administering the *Environmental Protection Act 1986*  
Locked Bag 10  
Joondalup DC WA 6919  
Email: [info@dwer.wa.gov.au](mailto:info@dwer.wa.gov.au)

**'Domgas'** means domestic gas;

**'Commissioning'** means the process of initial operation and testing that verifies the works and all relevant systems, plant, machinery and equipment have been installed and are capable of performing, to the maximum extent possible, in accordance with the design specification set out in the works approval application;

**'hydrostatic testing'** means testing vessel, pipe, or other hollow equipment integrity by internal pressurization with a test liquid;

**'LNG'** means liquefied natural gas;

**'Pre-commissioning'** means the process of verifying that individual components that make up the works are functioning correctly, prior to testing them together as a system during the commissioning phase;

**'Premises'** means the area defined in the Premises Map in Schedule 1 and by the coordinates in Schedule 2 and as specified at the front of this Works Approval;

**'Schedule 1'** means Schedule 1 of this works approval unless otherwise stated;

**'Schedule 2'** means Schedule 2 of this works approval unless otherwise stated;

**'stage'** means each stage of the works that is documented in the approved commissioning plan;

**'Works Approval'** means this Works Approval numbered W5584/2014/1 and issued under the Act; and

**'Works Approval Holder'** means the person or organisation named as the Works Approval Holder as specified at the front of this Works Approval.

- 1.1.3. Any reference to an Australian or other standard in the Works Approval means the relevant parts of the standard in force from time to time during the term of the Works Approval.
- 1.1.4. Any reference to a guideline or code of practice in the Works Approval means the version of that guideline or code of practice in force from time to time, and shall include and amendments or replacements to that guideline or code of practice made during the term of this Works Approval.

## 1.2 General conditions

- 1.2.1 The Works Approval Holder shall construct the works in accordance with the documentation detailed in Table 1.2.1:

<b>Table 1.2.1: Construction Requirements<sup>1</sup></b>		
<b>Document</b>	<b>Parts</b>	<b>Date of Document</b>
Works Approval Application for LNG and Domgas Plants– Wheatstone Project LNG Plant (Reference: 542-208)	All	12 December 2013
LNG and Domestic Gas Plant – Wheatstone Project LNG Plant Works Approval Application Supplementary Information (Reference: 542-209)	Cover letter, Attachment 1 and Attachment 2	12 December 2013
Brolga Camp Licence Application Query (Reference: 1011-216)	All	14 January 2014
Works Approval Application for LNG and Domgas Plants - Wheatstone Project LNG Plant – Part 1 (Reference: 425-223)	All	6 February 2014
Works Approval Application for LNG and Domgas Plants - Wheatstone Project LNG Plant – Part 2 (Reference: 542-226)	All	11 February 2014
Works Approval Application for LNG and Domgas Plants - Wheatstone Project LNG Plant – Response to the 2 <sup>nd</sup> Round Queries (Part 2) (Reference: 542-241)	All	19 March 2014

Note 1: Where the details and commitments of the documents listed in condition 1.2.1 are inconsistent with any other condition of this works approval, the conditions of this works approval shall prevail.

- 1.2.2 The Works Approval Holder shall commission the LNG Plant common facilities, LNG Train 1, and ancillary facilities for a period not exceeding 24 months.
- 1.2.3 The Works Approval Holder shall commission Train 2 of the LNG Plant and associated ancillary facilities for a period not exceeding 18 months.
- 1.2.4 The Works Approval Holder shall commission the Domgas plant and ancillary facilities for a period not exceeding 24 months.
- 1.2.5 The Works Approval Holder may operate the Domgas plant and ancillary facilities for a period commencing from the notification of the completion of commissioning this infrastructure in accordance with condition 3.2.1, and not exceeding the duration of the works approval.

## 2 Improvements

2.1.1. The Works Approval Holder shall complete the improvements in Table 2.1.1 by the date of completion in Table 2.1.1.

<b>Table 2.1.1: Improvement program</b>		
<b>Improvement reference</b>	<b>Improvement</b>	<b>Date of completion</b>
IR1	<p>The Works Approval Holder shall, prior to commencing pre-commissioning and hydrostatic testing, submit a pre-commissioning and hydrostatic testing management plan to the CEO. The plan shall include details relating to:</p> <ul style="list-style-type: none"> <li>(a) the Pre-commissioning and hydrostatic testing stages and expected timescales for pre-commissioning and hydrostatic testing;</li> <li>(b) pre-commissioning and hydrostatic testing procedures including:                             <ul style="list-style-type: none"> <li>i. hydrostatic test water intended treatment and disposal methods to be used;</li> <li>ii. procedures for treating hydrostatic test water if it does not meet specification requirements; and</li> <li>iii. chemical cleaning and disposal procedures including types of chemicals to be used and intended disposal methods;</li> </ul> </li> <li>(c) expected emissions and discharges during pre-commissioning and hydrostatic testing and the environmental implications of the emissions;</li> <li>(d) how emissions and discharges will be managed during pre-commissioning and hydrostatic testing;</li> <li>(e) the monitoring that will be undertaken during the pre-commissioning and hydrostatic testing period;</li> <li>(f) how accidents or malfunctions will be managed; and</li> <li>(g) reporting proposals including accidents, malfunctions and reporting against the pre-commissioning and hydrostatic testing management plan.</li> </ul> <p>Pre-commissioning and hydrostatic testing shall be carried out in accordance with the pre-commissioning and hydrostatic testing management plan as approved.</p>	At least 3 months prior to pre-commissioning and hydrostatic testing
IR2	<p>The Works Approval Holder shall, prior to commencing commissioning activities, submit a commissioning plan to the CEO for approval. The plan shall include details relating to:</p> <ul style="list-style-type: none"> <li>(a) the commissioning stages and expected timescales for commissioning;</li> <li>(b) expected emissions and discharges during commissioning and the environmental implications of these emissions;</li> <li>(c) how emissions and discharges will be managed during commissioning;</li> <li>(d) the monitoring that will be undertaken during the commissioning period;</li> <li>(e) how accidents or malfunctions will be managed;</li> <li>(f) start up and shut down procedures; and</li> <li>(g) reporting proposals including accidents, malfunctions and reporting against the commissioning plan.</li> </ul> <p>The commissioning plan shall also include a copy of the leak detection and repair program. Commissioning, and operation in accordance with condition 1.2.5, shall be carried out in accordance with the commissioning plan as approved.</p>	At least 3 months prior to commissioning

### 3 Information

#### 3.1 Reporting

3.1.1 The Works Approval Holder shall submit a compliance document to the CEO, following the construction of each stage of the works and prior to commissioning of the same.

3.1.2 The compliance document shall:

- (a) certify that the works were constructed in accordance with the conditions of the works approval; and
- (b) be signed by a person authorised to represent the Works Approval Holder and contain the printed name and position of that person within the company.

3.1.3 The Works Approval Holder shall submit a pre-commissioning and hydrostatic testing report to the CEO for approval within 1 month of the completion of pre-commissioning and hydrostatic testing of the works.

3.1.4 The Works Approval Holder shall ensure the report required by condition 3.1.3 includes:

- (a) a summary of the monitoring results recorded under condition 2.1.1;
- (b) a list of any original monitoring reports submitted to the works approval holder from third parties for the commissioning period;
- (c) a summary of the environmental performance against the design specifications set out in the works approval application;
- (d) a review of performance against the works approval conditions; and
- (e) where they have not been met, measures proposed to meet the design specification and/or works approval conditions, together with timescales for implementing the proposed measures.

3.1.5 The Works Approval Holder shall submit a commissioning report for each stage of the works, to the CEO for approval within 1 month of the completion of commissioning of each stage of the works.

3.1.6 The Works Approval Holder shall ensure the report required by condition 3.1.5 includes:

- (a) a summary of the monitoring results recorded under condition 2.1.1;
- (b) a list of any original monitoring reports submitted to the works approval holder from third parties for the commissioning period;
- (c) a summary of the environmental performance of the LNG and Domgas Plants as installed, against the design specifications set out in the works approval application;
- (d) a review of performance against the works approval conditions; and
- (e) where they have not been met, measures proposed to meet the design specification and/or works approval conditions, together with timescales for implementing the proposed measures.

### 3.2 Notification

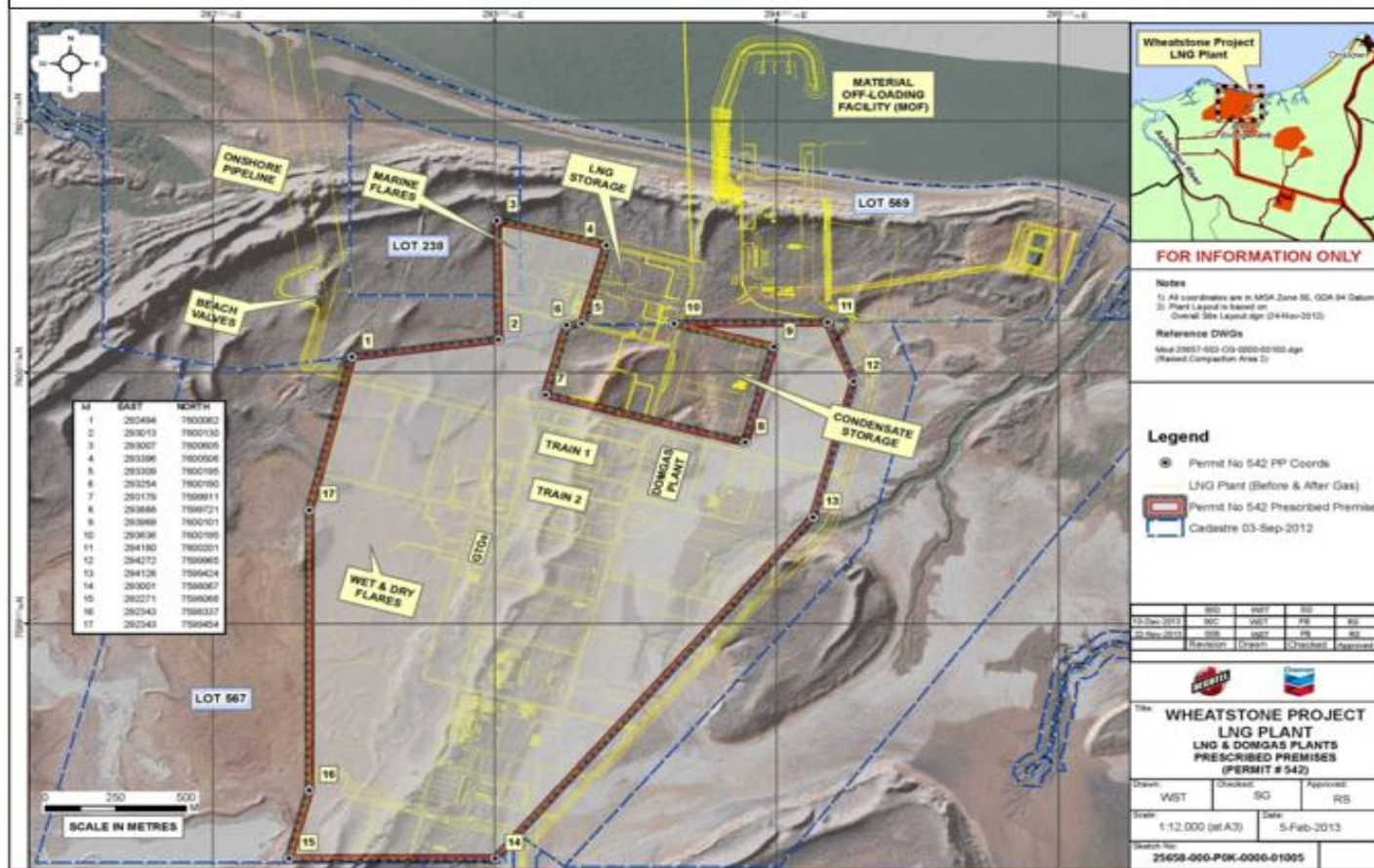
3.2.1 The Works Approval Holder shall ensure that the parameters listed in Table 3.2.1 are notified to the CEO at the Contact Address and in accordance with the notification requirements of the table.

<b>Table: 3.2.1: Notification requirements</b>			
<b>Condition or table (if relevant)</b>	<b>Parameter</b>	<b>Notification requirement</b>	<b>Format or form</b>
2.1.1	Commencement of commissioning for LNG Train 1 and Common facilities.	7 days after commencement	N/A
2.1.1	Commencement of commissioning for LNG Train 2 and ancillary facilities.	7 days after commencement	
2.1.1	Commencement of commissioning for Domgas Plant and ancillary facilities.	7 days after commencement	
1.2.3	Completion of commissioning for LNG Train 1 and Common facilities.	7 days after completion	
1.2.4	Completion of commissioning for LNG Train 2 and ancillary facilities.	7 days after completion	
1.2.5	Completion of commissioning for Domgas Plant and ancillary facilities.	7 days after completion	

# Schedule 1: Maps

## Premises map

The premises is shown in the map below. The red line depicts the premises boundary.



W5584/2014/1 (Date of latest amendment: 23 April 2026)

## Schedule 2: Premises boundary

The premises boundary is defined by the coordinates in Table 4.1.1

Table 4.1.1. Premises boundary coordinates	
Easting	Northing
292494E	7600062N
293013E	7600130N
293007E	7600605N
293396E	7600506N
293309E	7600195N
293254E	7600190N
293179E	7599911N
293888E	7599721N
293989E	7600101N
293636E	7600195N
294180E	7600201N
294272E	7599965N
294128E	7599424N
293001E	7598067N
292271E	7598066N
292343E	7598337N
292343E	7599454N