



Works approval number	W6566/2021/1
Works approval holder	Evolution Mining (Mungari) Pty Ltd
ACN	002 124 745
Registered business address	Level 24, 175 Liverpool Street SYDNEY NSW 2000
DWER file number	DER2021/000244
Duration	10/8/2021 to 10/8/2031
Date of issue	10/8/2021
Date of amendment	5/05/2026
Premises details	Mungari Gold Mine Kundana Road KALGOORLIE WA 6430 Mining tenements: L15/391, M15/1831 (partial), M15/1827 (partial), L15/387 (partial), M15/829 (partial), M15/830 (partial)

Prescribed premises category description (Schedule 1, <i>Environmental Protection Regulations 1987</i>)	Assessed production capacity
Category 6: Mine dewatering	315,360 tonnes per year

This works approval is granted to the works approval holder, subject to the attached conditions, on 5/05/2026, by

MANAGER – RESOURCE INDUSTRIES

STATEWIDE DELIVERY (ENVIRONMENTAL REGULATION)

an officer delegated under section 20 of the *Environmental Protection Act 1986* (WA)

Works approval history

Date	Reference number	Summary of changes
10/08/2021	W6566/2021/1	Works approval granted
5/05/2026	W6566/2021/1	Amendment to: <ul style="list-style-type: none">• extend duration of the instrument to 10 August 2031• modify pipeline diameter to 280 mm• add new HDPE lined transfer dam

Interpretation

In this works approval:

- (a) the words 'including', 'includes' and 'include' in conditions mean "including but not limited to", and similar, as appropriate;
- (b) where any word or phrase is given a defined meaning, any other part of speech or other grammatical form of that word or phrase has a corresponding meaning;
- (c) where tables are used in a condition, each row in a table constitutes a separate condition;
- (d) any reference to an Australian or other standard, guideline, or code of practice in this works approval:
 - (i) if dated, refers to that particular version; and
 - (ii) if not dated, refers to the latest version and therefore may be subject to change over time;
- (e) unless specified otherwise, any reference to a section of an Act refers to that section of the EP Act; and
- (f) unless specified otherwise, all definitions are in accordance with the EP Act.

NOTE: This works approval requires specific conditions to be met but does not provide any implied authorisation for other emissions, discharges, or activities not specified in this works approval.

Works approval conditions

The works approval holder must ensure that the following conditions are complied with:

Construction phase

Infrastructure and equipment

1. The works approval holder must:
 - (a) construct and install the infrastructure and equipment;
 - (b) in accordance with the corresponding design and construction requirements; and
 - (c) at the corresponding infrastructure location as set out in Table 1.

Table 1: Design and construction requirements

	Infrastructure item	Design and construction requirements	Infrastructure location
1.	Dewatering pipelines	<p>Maximum diameter of 280mm High Density Polyethylene Pipe (HDPE) required to meet the following standards:</p> <ul style="list-style-type: none"> • AS/NZS 2033:3008: Installation of polyethylene pipe systems; • AS/NZS 4129:2008: Fittings for polyethylene (PE) pipes for pressure applications; • AS/NZS 4130:2009 Polyethylene (PE) pipes for pressure applications; and • AS/NZS 4131:2010: Polyethylene (PE) compounds for pressure pipes and fittings <p>contained within an earthen v-drain bund (Infrastructure item 2)</p>	Pipeline route strictly to be constructed along route as shown in Figure 1 of Schedule 1.
2.	Earthen v-drain bund (for pipeline containment)	Constructed to contain the flow in a 280 mm line (infrastructure item 1) for 12 hours at 4L/s.	Pipeline route strictly to be constructed along route as shown in Figure 1 of Schedule 1.
3.	HDPE Lined transfer dam	<p>Construction of transfer dam only if operationally required.</p> <p>Dam to be:</p> <ul style="list-style-type: none"> • To be lined with HDPE • Designed to include a minimum freeboard of 300 mm • 12,540m³ (excluding the additional capacity provided by the 300 mm) <p>Water truck to be available on-site during construction of the HDPE Lined transfer dam</p>	Figure 2 of Schedule 1

Compliance reporting

2. The works approval holder must within 30 calendar days of an item of infrastructure or equipment required by condition 1 being constructed and installed:
 - (a) undertake an audit of their compliance with the requirements of condition 1; and
 - (b) prepare and submit to the CEO an Environmental Compliance Report on that compliance.
3. The Environmental Compliance Report required by condition 2, must include as a minimum the following:
 - (a) certification by a suitably qualified engineer that the items of infrastructure or component(s) thereof, as specified in condition 1, have been constructed in accordance with the relevant requirements specified in condition 1;
 - (b) as constructed plans and a detailed site plan for each item of infrastructure or component of infrastructure specified in condition 1; and
 - (c) be signed by a person authorised to represent the works approval holder and contains the printed name and position of that person.

Time limited operations phase

Commencement and duration

4. The works approval holder may only commence time limited operations for an item of infrastructure identified in condition 1 where the Environmental Compliance Report as required by condition 2 has been submitted by the works approval holder for that item of infrastructure.
5. The works approval holder may conduct time limited operations for an item of infrastructure specified in condition 1 (as applicable):
 - (a) for a period not exceeding 180 calendar days from the day the works approval holder meets the requirements of condition 4 for that item of infrastructure; or
 - (b) until such time as a licence for that item of infrastructure is granted in accordance with Part V of the *Environmental Protection Act 1986*.

Time limited operations requirements and emission limits

6. During time limited operations, the works approval holder must ensure that the emissions specified in Table 2, are discharged only from the corresponding emission source and only at the corresponding discharge points, unless as otherwise approved under licence L7750/2001/10.

Table 2: Authorised discharge points and emission limits

Emission source	Emission limit	Discharge point	Discharge point location
Rayjax pit saline mine water	315,360 tonnes/yr included within the total dewatering volume approved under L7750/2001/10	Cutters Ridge Pit	As shown in Figure 2 Schedule 1
	5,000,000 tonnes per year as approved under L7750/2001/10.	Discharge point approved under L7750/2001/10 - Northern Transfer Pond	As shown in Figure 2 Schedule 1

7. During time limited operations, the works approval holder must ensure that the premises infrastructure and equipment listed in Table 2 and shown in Schedule 1 is maintained and operated in accordance with the corresponding operational requirement set out in Table 3.

Table 3: Infrastructure and equipment requirements during time limited operations

	Site infrastructure and equipment	Operational requirement	Infrastructure location
1.	Cutters Ridge Pit	<ul style="list-style-type: none"> A minimum vertical freeboard of 6m must be maintained below the lowest crest level at all times. When the water level approaches 6m from the surface of the pit, implement actions as required to reduce water levels. Must be inspected monthly (whilst operating) for freeboard capacity. A written log is required to be maintained for each inspection. 	Approximately as shown in Figures 1 and 2 of Schedule 1. Pipeline alignment may vary slightly.
2.	HDPE pipeline	<ul style="list-style-type: none"> An inspection is required for visual integrity and leak detection 12 hourly if pipeline flow rates or equal to or exceed 4L/s; or 24 hourly when flow rates are below 4L/s A written log is required to be maintained for each inspection, with the record of each inspection signed by the responsible person. 	
3.	Pipeline bund	Bund is to be maintained along entire pipeline, sufficient to contain the flow in a 280 mm line for 12 hours at 4L/s.	

8. The works approval holder shall immediately recover, or remove and dispose of, spills of environmentally hazardous materials including saline water, fuel, oil, or other hydrocarbons. Hydrocarbon spills must be disposed off-site by a licensed waste removal contractor.

Monitoring during time limited operations

9. The works approval holder must monitor emissions during time limited operations in accordance with Table 4.

Table 4: Emissions and discharge monitoring during time limited operations

Discharge point	Parameter	Frequency	Averaging Period	Unit
Cutters Ridge Pit	Volumetric flow rate	Continuous	Monthly	kL
	Standing water level	Each monthly period ¹	Spot sample	metres below pit crest level

1. monitoring is undertaken in each monthly period such that there are at least 15 days in between the days on which samples are taken in successive months

10. The works approval holder must record the results of all monitoring activity required by condition 9.

Compliance reporting

11. The works approval holder must submit to the CEO a report on the time limited operations within 30 calendar days of the completion date of time limited operations.
12. The works approval holder must ensure the report required by condition 11 includes the following:
 - (a) a summary of the time limited operations, including timeframes and kilolitres of water pumped;
 - (b) a summary of monitoring results obtained during time limited operations under condition 9.
 - (c) a review of performance and compliance against the conditions of the works approval; and
 - (d) where the conditions of this works approval have not been met, what measures will the works approval holder take to meet them, and what timeframes will be required to implement those measures.

Records and reporting (general)

13. The works approval holder must record the following information in relation to complaints received by the works approval holder (whether received directly from a complainant or forwarded to them by the Department or another party) about any alleged emissions from the premises:
 - (a) the name and contact details of the complainant, (if provided);
 - (b) the time and date of the complaint;
 - (c) the complete details of the complaint and any other concerns or other issues raised; and
 - (d) the complete details and dates of any action taken by the works approval holder to investigate or respond to any complaint.
14. The works approval holder must maintain accurate and auditable books including the following records, information, reports, and data required by this works approval:
 - (a) the works conducted in accordance with condition 1;
 - (b) any maintenance of infrastructure that is performed in the course of complying with condition 7;
 - (c) monitoring programmes undertaken in accordance with condition 9; and
 - (d) complaints received under condition 13.
15. The books specified under condition 14 must:
 - (a) be legible;
 - (b) if amended, be amended in such a way that the original version(s) and any subsequent amendments remain legible and are capable of retrieval;
 - (c) be retained by the works approval holder for the duration of the works approval; and
 - (d) be available to be produced to an inspector or the CEO as required.

Definitions

In this works approval, the terms in Table 5 have the meanings defined.

Table 5: Definitions

Term	Definition
books	has the same meaning given to that term under the EP Act.
CEO	means Chief Executive Officer. CEO for the purposes of notification means: Director General Department administering the <i>Environmental Protection Act 1986</i> Locked Bag 10 Joondalup DC WA 6919 info@dwer.wa.gov.au
Department	means the department established under section 35 of the <i>Public Sector Management Act 1994</i> and designated as responsible for the administration of Part V Division 3 of the EP Act.
discharge	has the same meaning given to that term under the EP Act.
emission	has the same meaning given to that term under the EP Act.
Environmental Compliance Report	means a report to satisfy the CEO that the conditioned infrastructure and/or equipment has been constructed and/or installed in accordance with the works approval.
EP Act	<i>Environmental Protection Act 1986 (WA)</i> .
EP Regulations	<i>Environmental Protection Regulations 1987 (WA)</i> .
Monthly (monitoring)	monitoring is undertaken in each monthly period such that there are at least 15 days in between the days on which samples are taken in successive months
premises	the premises to which this licence applies, as specified at the front of this licence and as shown on the premises map (Figure 1) in Schedule 1 to this works approval.
prescribed premises	has the same meaning given to that term under the EP Act.
time limited operations	refers to the operation of the infrastructure and equipment identified under this works approval that is authorised for that purpose, subject to the relevant conditions.
waste	has the same meaning given to that term under the EP Act.

Term	Definition
works approval	refers to this document, which evidences the grant of the works approval by the CEO under section 54 of the EP Act, subject to the conditions.
works approval holder	refers to the occupier of the premises being the person to whom this works approval has been granted, as specified at the front of this works approval.

END OF CONDITIONS

Schedule 1: Maps

Premises map

The boundary of the prescribed premises is shown in the map below in pink outline (Figure 1)

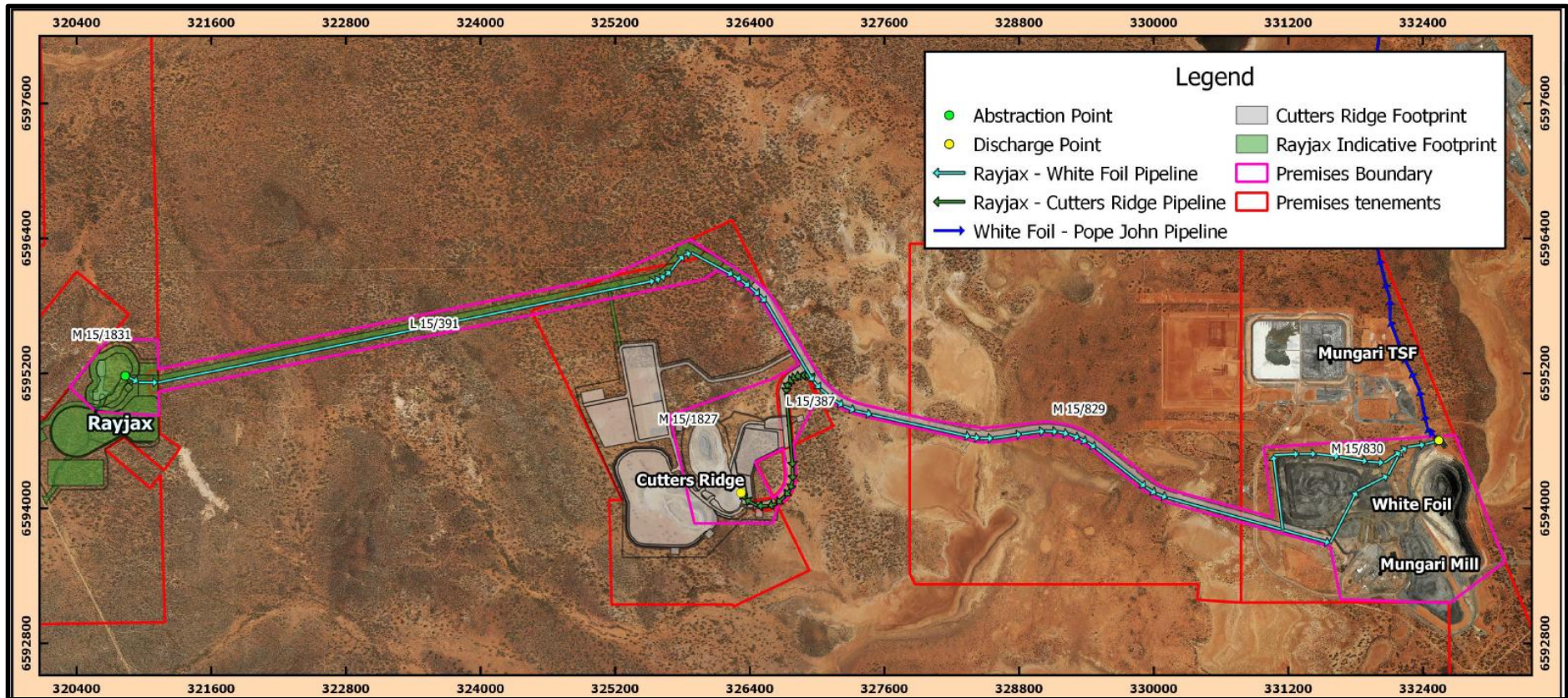


Figure 1: Map of the boundary of the prescribed premises

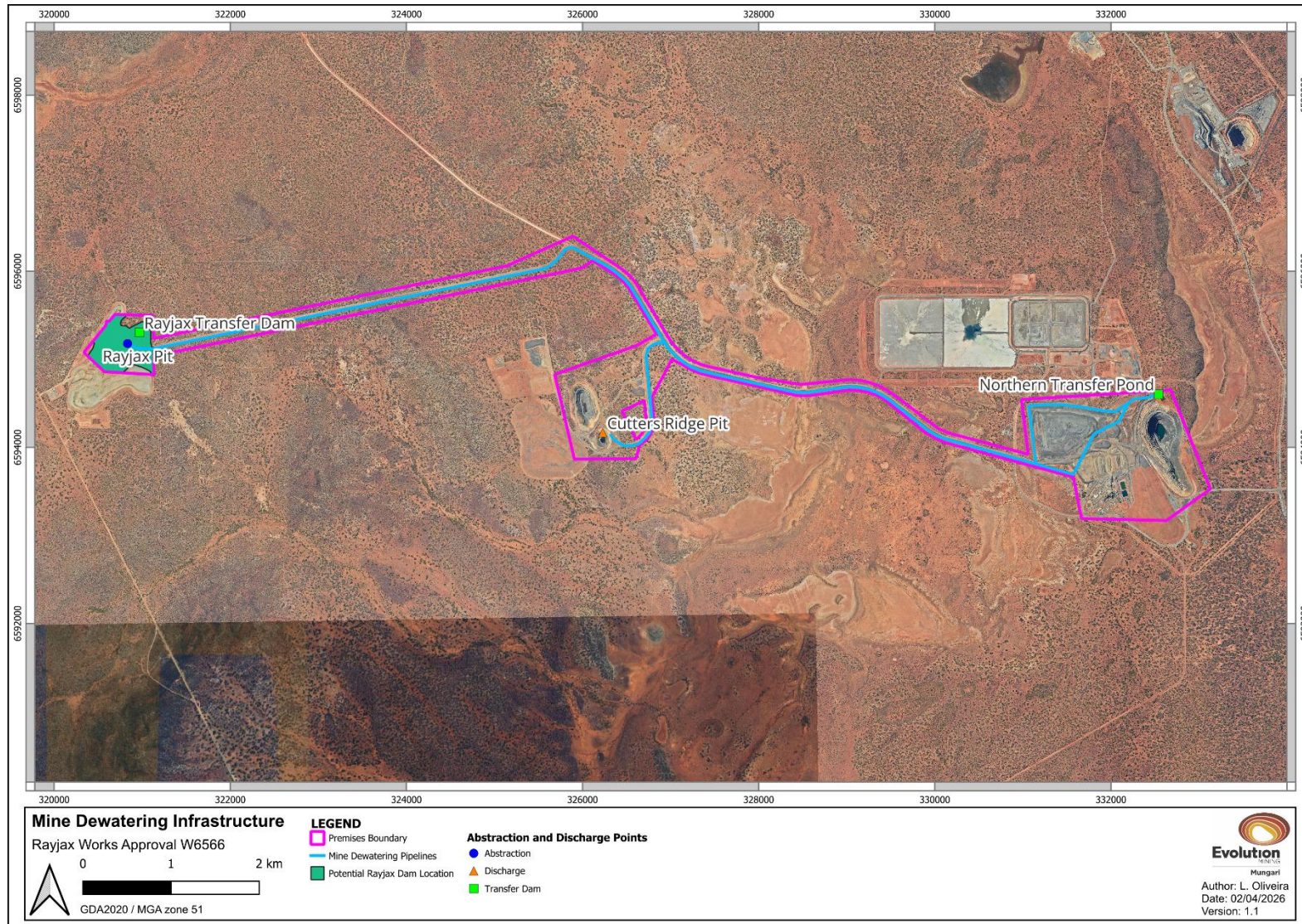


Figure 2: Location of Rayjax Transfer Dam and Northern Transfer Pond

W6566/2021/1

IR-T05 Works approval template (v5.0) (February 2020)